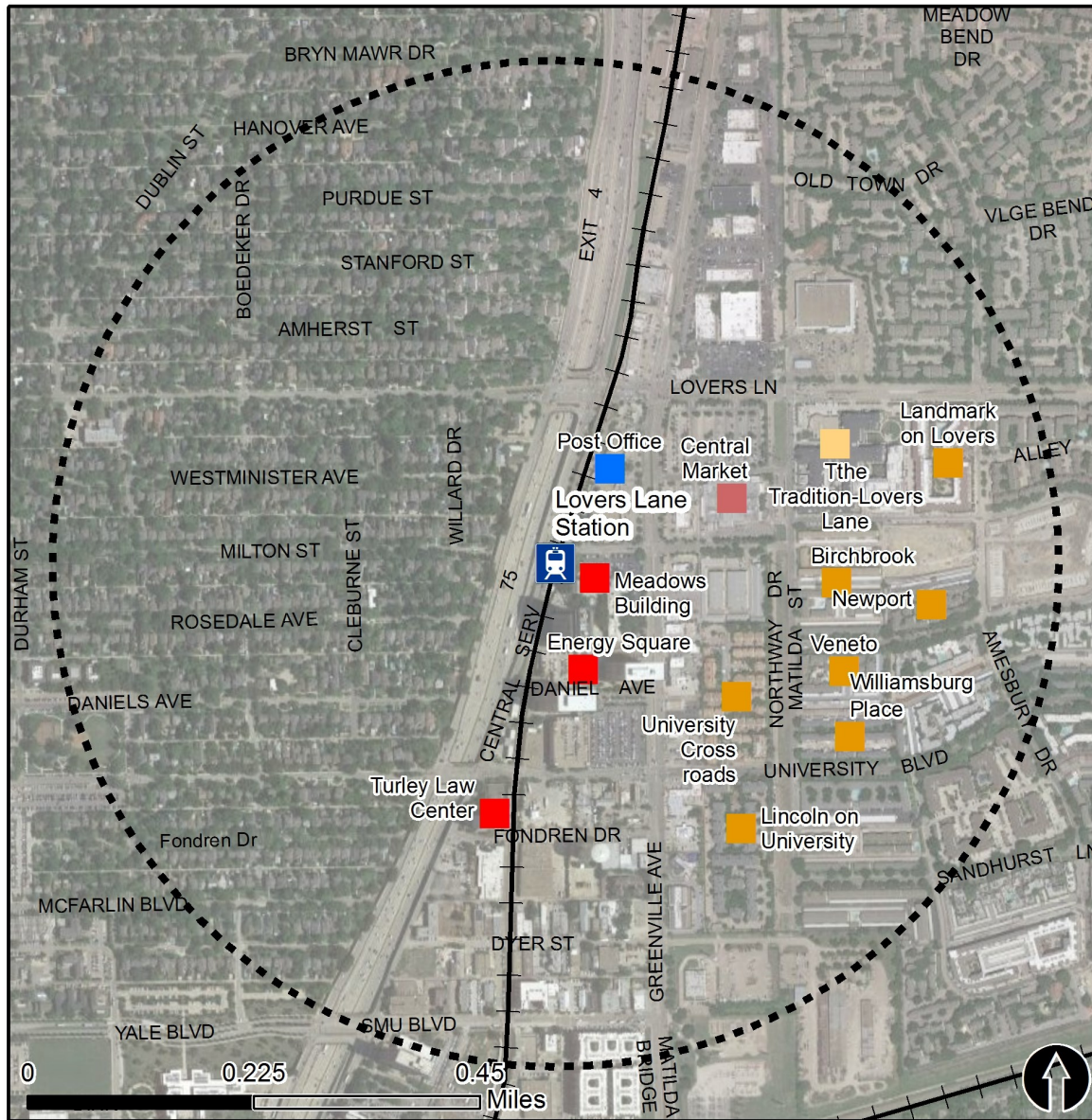


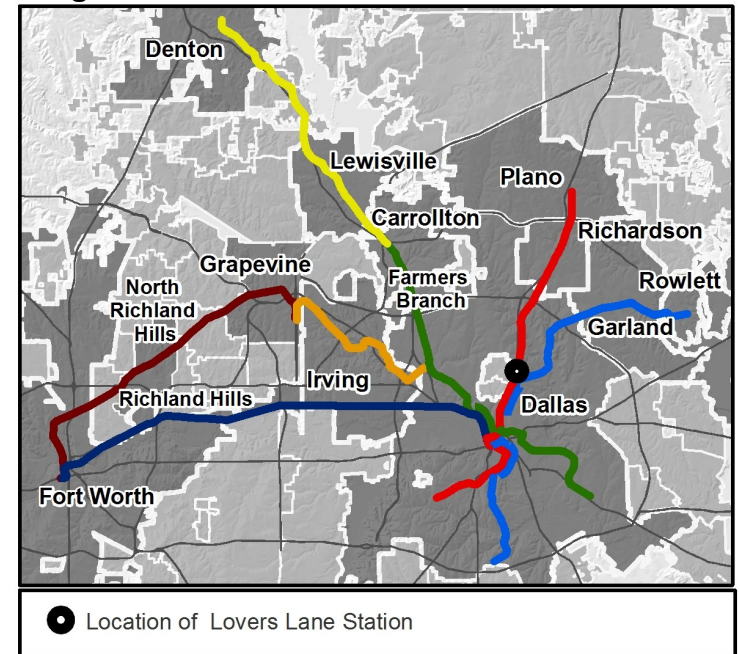
Rail Station Fact Sheet – Lovers Lane Station



Station Overview

Lovers Lane Station is located along the North Central Expressway near Lovers Lane in Dallas. The station opened in 1997 and is served by the DART Rail Red and Orange Lines.

Regional Rail Transit Lines



0.5 Mile
Station Buffer



Rail Stations



Rail Lines

Key Developments



Government



Group Quarters



Multi-Family



Office



Retail

Rail Station Fact Sheet – Lovers Lane Station



Station Characteristics¹

Address	5603 Milton Street
City	Dallas
Agency	Dallas Area Rapid Transit
Rail Line(s)	Red Line, Orange Line
Corridor	North Central (NC)
Year Opened	1997
Park & Ride Spaces	0

Ridership¹

2015 Avg. Weekday	1,398
2015 Avg. Saturday	1,229
2015 Avg. Sunday	669

2014 On-Board Transit Survey: Access Mode to Station²

Bike	2.4%
Drive Alone	3.5%
Carpool	0.2%
Walk	45.4%
Drop Off	16.2%
Other	0.0%
Transit Transfer	32.3%

Station Area Plans and Studies

Title	
Publisher	
Year	
Web Location	

Station Area Characteristics (1/2 mile radius)

Demographics³

Total Population	14,107
Population Density (pop/sq. mile)	7,822
Average Median Age	33
Average Median Income	\$117,855.15

Housing³

Total Housing Units	7,102
Housing Density (units/sq. mile)	3,938
Percent Occupied	93%
Percent Owner-Occupied	43%
Percent Renter-Occupied	57%

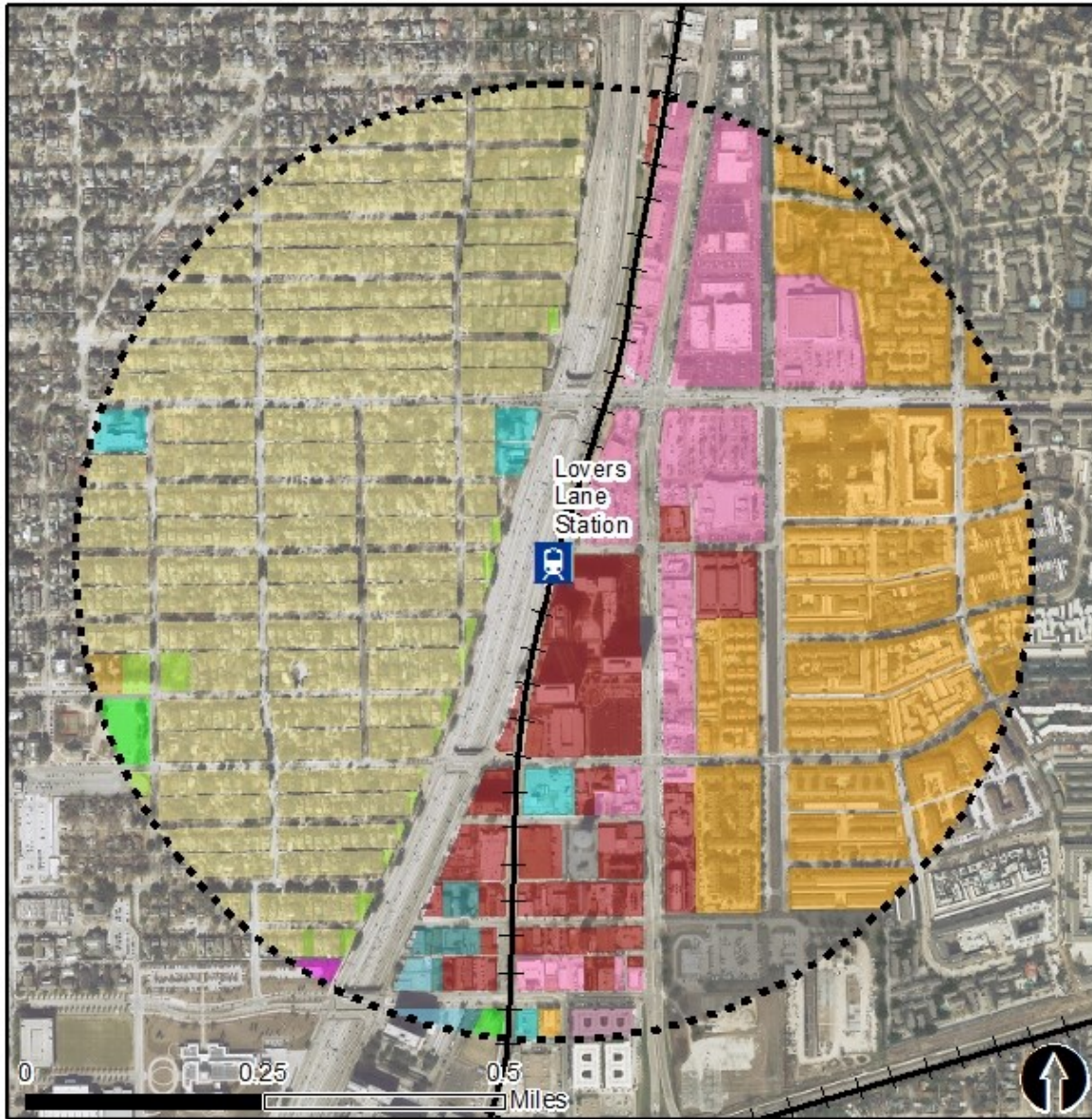
Commute To Work³

Percent Automobile	82.6%
Percent Drive Alone	76.9%
Percent Carpool	5.7%
Percent Transit	3.9%
Percent Bike	0.7%
Percent Walk	2.4%
Percent Other	1.1%
Percent Work from Home	9.3%
Percent Zero-Vehicle Households	3.7%

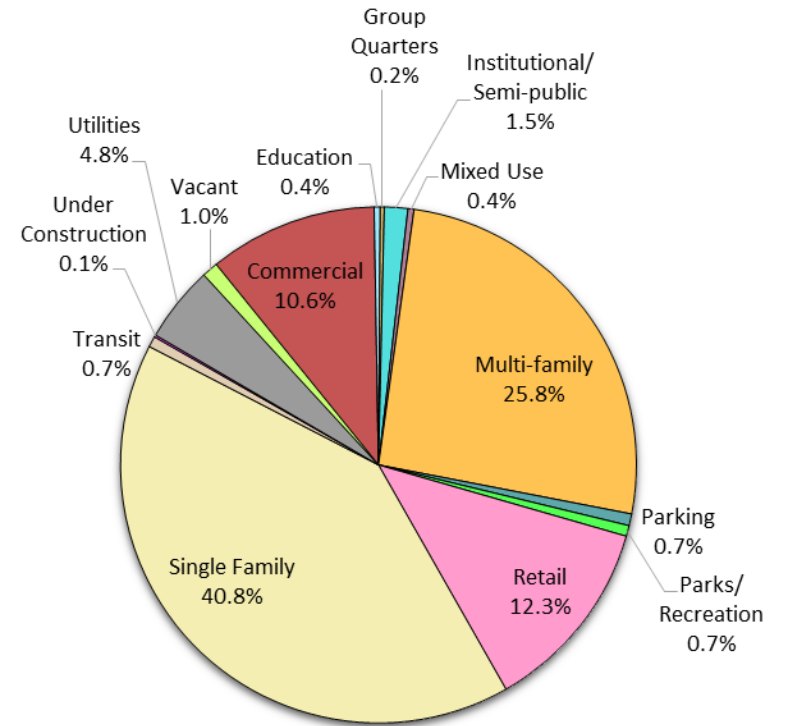
Traffic Survey Zone 2017 Employment Forecast²

Total Jobs	14,195
Job Density (jobs/sq. mile)	7,898

Land Use (2016) – Lovers Lane Station



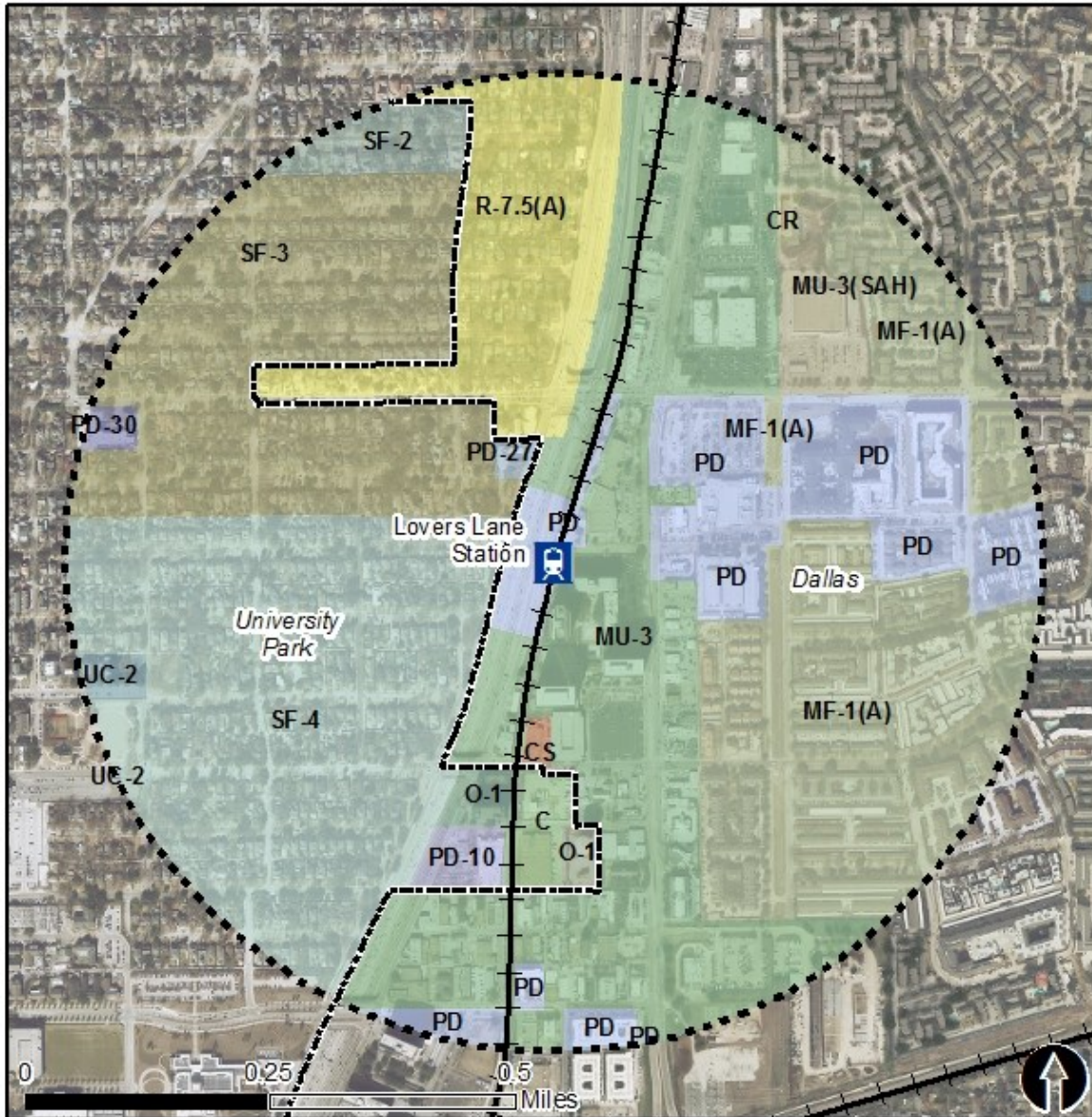
Land Use Percentages



0.5 Mile
Station Buffer

Rail Stations Rail Alignment

Zoning (2016) – Lovers Lane Station



Zoning Districts

CR – Community Retail

MF-2(A) – Multi-family

MU-1, 2, 3 – Mixed-Use

PD – Planned Development

University Park (2014)

C – Commercial

PD-# – Planned Development

SF-2, 3, 4 – Single Family

O-1 – Office District

UC-2 – University Campus

For more information on zoning, please visit the
City of Dallas Zoning website at:

<http://gis.dallascityhall.com/zoningweb/>

City of University Park Zoning website at:

<https://www.uptexas.org/Government/Community-Development/Zoning>



0.5 Mile
Station Buffer



Rail Stations



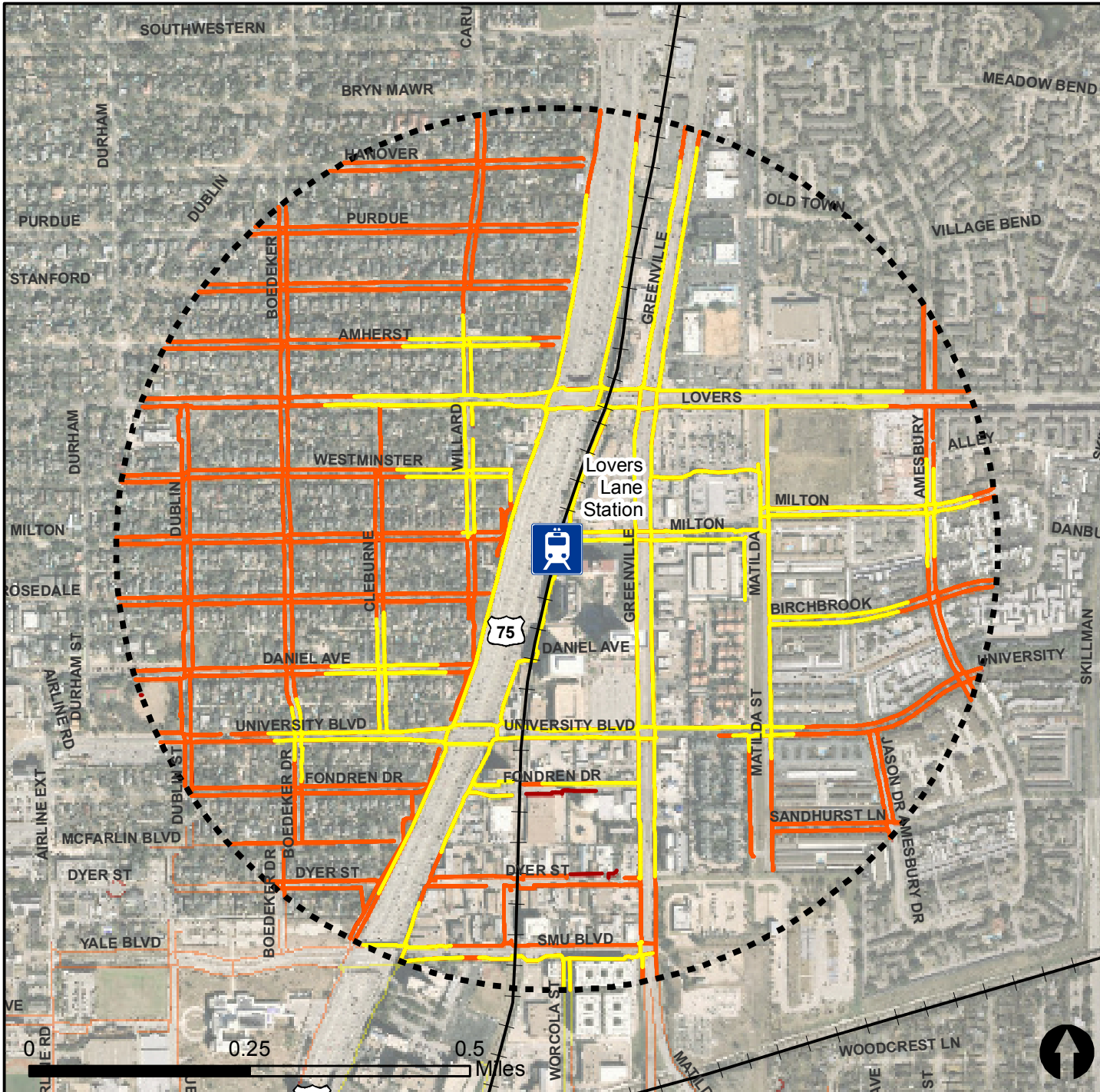
Rail Lines

Pedestrian Routes to Rail - Lovers Lane Station







Last Updated: February 2015



North Central Texas
Council of Governments

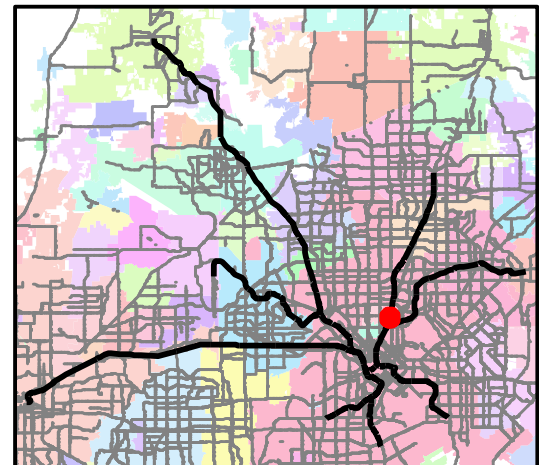


Legend

-  Rail Stations
-  0.5 Mile Station Buffer
-  Railroads
-  Existing sidewalk facilities within a 0.5 mile walk distance
-  Existing sidewalk facilities greater than a 0.5 mile walk distance
-  Existing sidewalk facilities that are disconnected due to a gap in the network

Project Overview

The Pedestrian Routes to Rail study identifies all existing pedestrian facilities within a half-mile radius of existing light rail and commuter rail stations in the Dallas-Fort Worth region based on 2014 data. ArcGIS Network Analyst tool was used to identify continuous facilities that are less than or greater than a half-mile actual walking distance to a station. The maps also reflect existing facilities that are disconnected due to gaps or other barriers not allowing a continuous pedestrian route to a station. The maps do not reflect the condition or ADA compliance of the existing infrastructure. More information on the Routes to Rail study and methodology is available at: nctcog.org/RoutesToRail

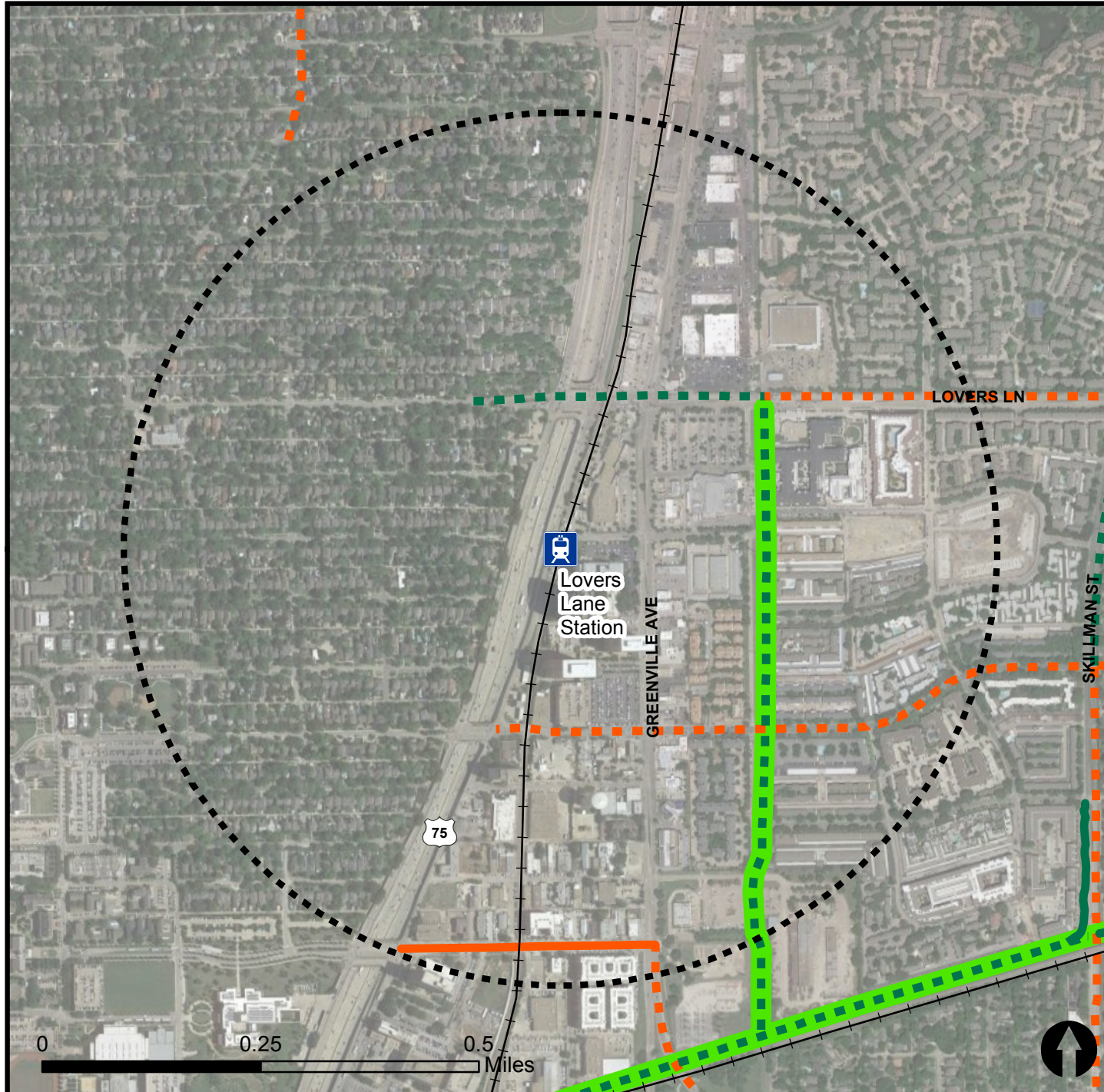


Bicycle Routes to Rail - Lovers Lane Station

Last Updated: October 2016



North Central Texas
Council of Governments



Legend

- Rail Stations
- 0.5 Mile Station Buffer
- Rail Lines
- On-Street Bikeway, Existing
- On-Street Bikeway, Planned
- 2040 Veloweb
- Off-Street Path, Existing
- Off-Street Path, Planned

Project Overview

The Bicycle Routes to Rail study identifies all existing and planned bikeways in proximity to existing or under-construction light rail and commuter rail stations in the Dallas / Fort Worth region based on 2016 data. The maps reflect off-street paths (trails) and streets designated by local adopted master plans for dedicated bikeways (e.g. bike lanes, cycle tracks) located on the street. In accordance with the Texas Transportation Code, bicyclists have a right to the road. As such, the map does not reflect other roadways around the station that may have signed bike routes or by state law may be used by bicyclists. More information about the Routes to Rail study and methodology is available at:

nctcog.org/RoutesToRail

