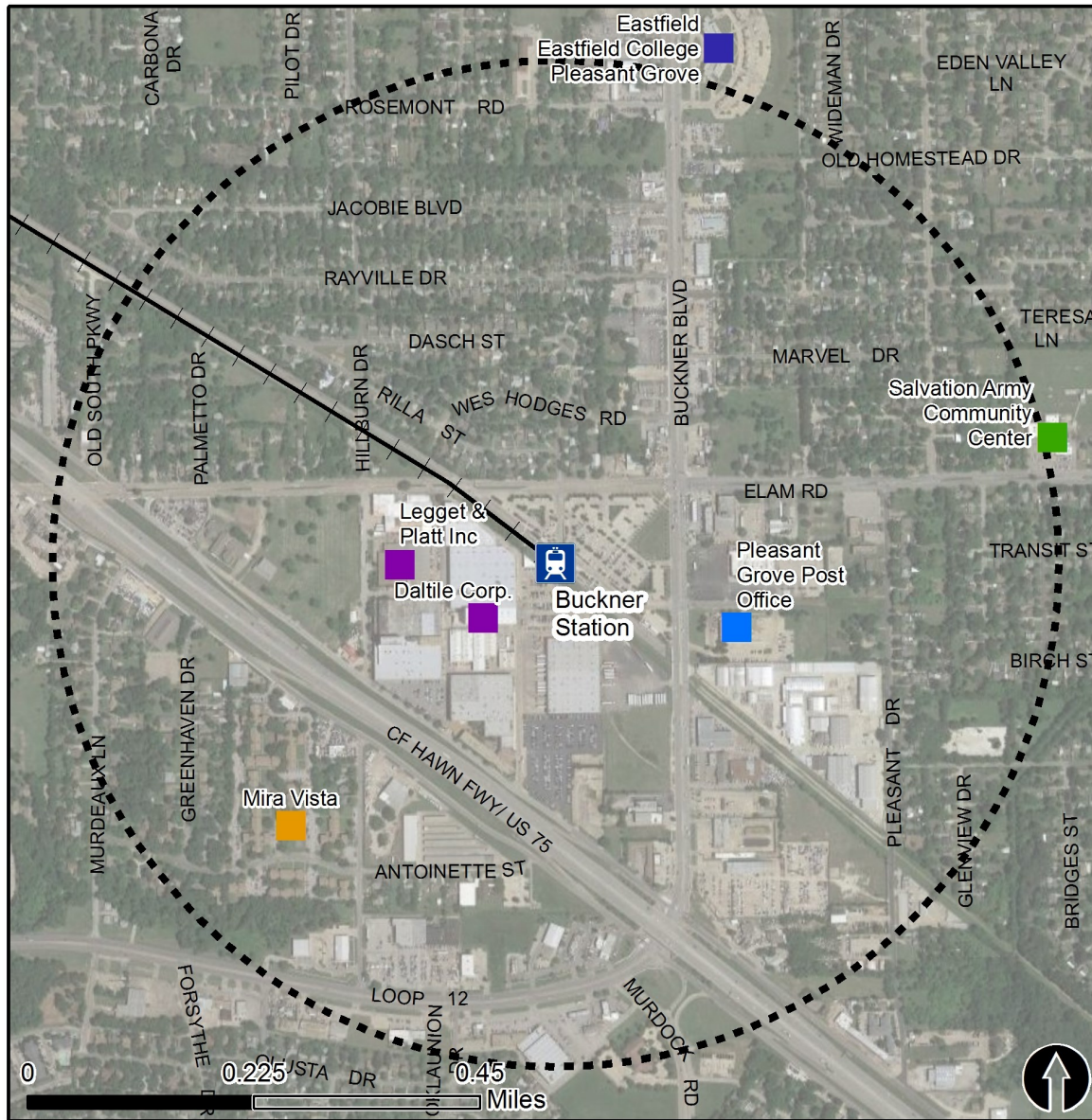


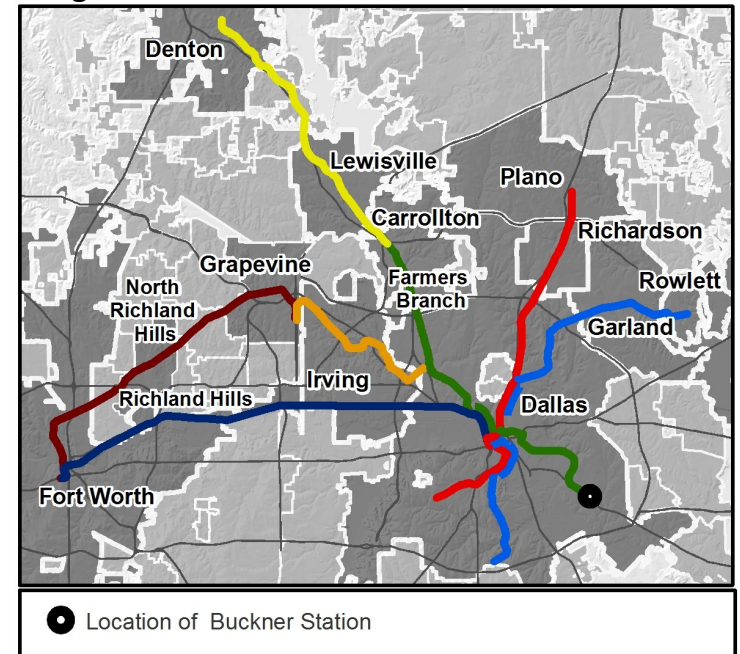
Rail Station Fact Sheet – Buckner Station



Station Overview

Buckner Station is located at the intersection of Buckner Boulevard and Elam Road in Dallas. The station opened in 2010 and currently serves as the southern terminus for the DART Rail Green Line.

Regional Rail Transit Lines



0.5 Mile Station Buffer Rail Lines	Rail Stations	Key Developments				
		Education	Government	Industrial	Multi-Family	Recreation

Rail Station Fact Sheet – Buckner Station



Station Characteristics¹

Address	8008 Elam Road
City	Dallas
Agency	Dallas Area Rapid Transit
Rail Line(s)	Green Line
Corridor	Southeast (SE)
Year Opened	2010
Park & Ride Spaces	499

Ridership¹

2015 Avg. Weekday	1,421
2015 Avg. Saturday	885
2015 Avg. Sunday	661

2014 On-Board Transit Survey: Access Mode to Station²

Bike	0.5%
Drive Alone	14.3%
Carpool	0.8%
Walk	27.6%
Drop Off	16.8%
Other	0.0%
Transit Transfer	40.0%

Station Area Plans and Studies

Title	forwardDallas! Comp Plan Amendment: Buckner Station Area Plan
Publisher	City of Dallas
Year	2013
Web Location	http://dallascityhall.com/departments/pnv/strategic-planning/DCH%20Documents/pdf/Buckner_Plan_with_resolution_page.pdf

Station Area Characteristics (1/2 mile radius)

Demographics³

Total Population	15,769
Population Density (pop/sq. mile)	4,618
Average Median Age	28
Average Median Income	\$34,607.89

Housing³

Total Housing Units	4,755
Housing Density (units/sq. mile)	1,392
Percent Occupied	87%
Percent Owner-Occupied	57%
Percent Renter-Occupied	43%

Commute To Work³

Percent Automobile	86.5%
Percent Drive Alone	76.2%
Percent Carpool	10.3%
Percent Transit	8.1%
Percent Bike	0.2%
Percent Walk	1.5%
Percent Other	1.3%
Percent Work from Home	2.4%
Percent Zero-Vehicle Households	14.2%

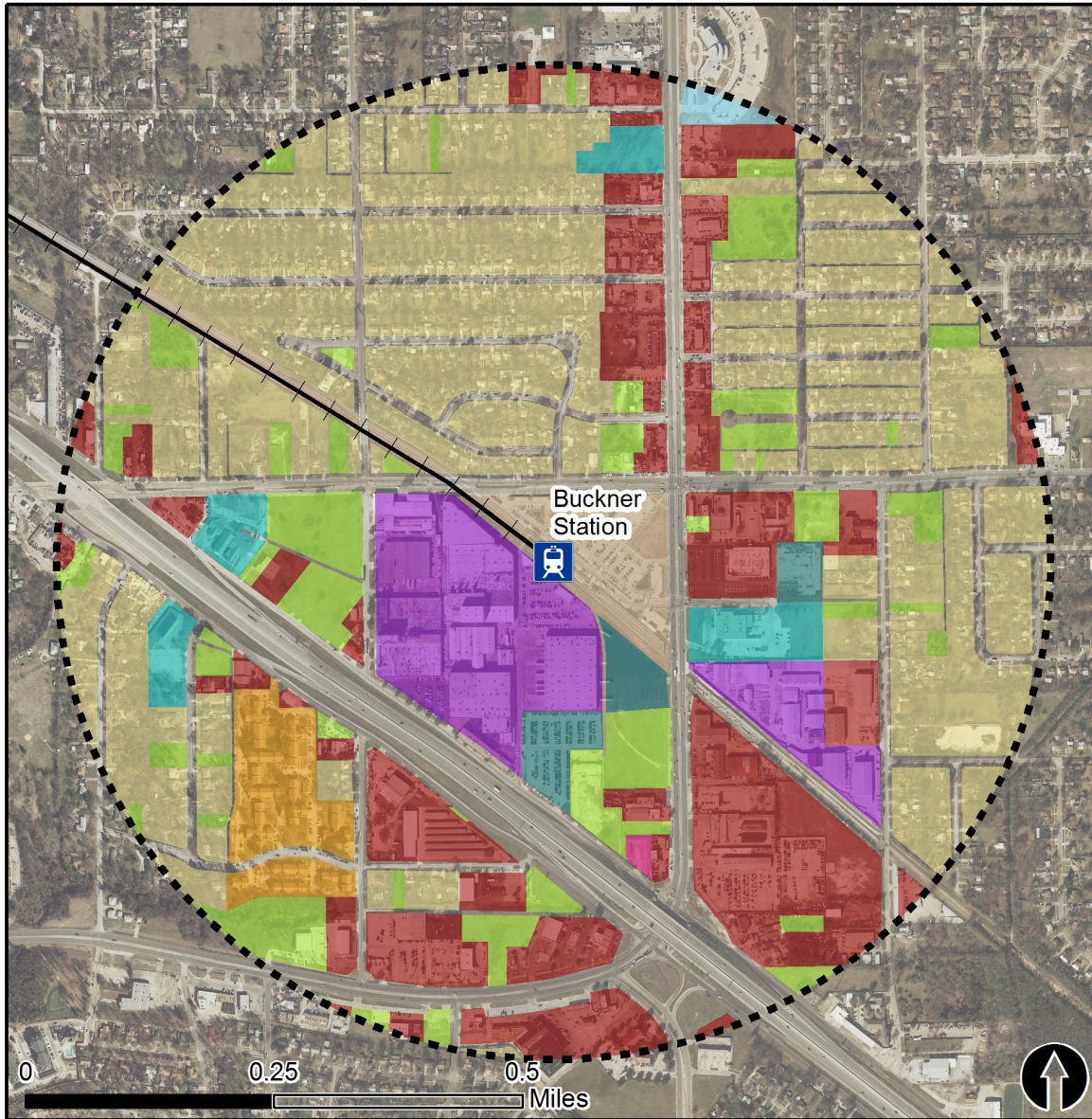
Traffic Survey Zone 2017 Employment Forecast²

Total Jobs	2,710
Job Density (jobs/sq. mile)	852

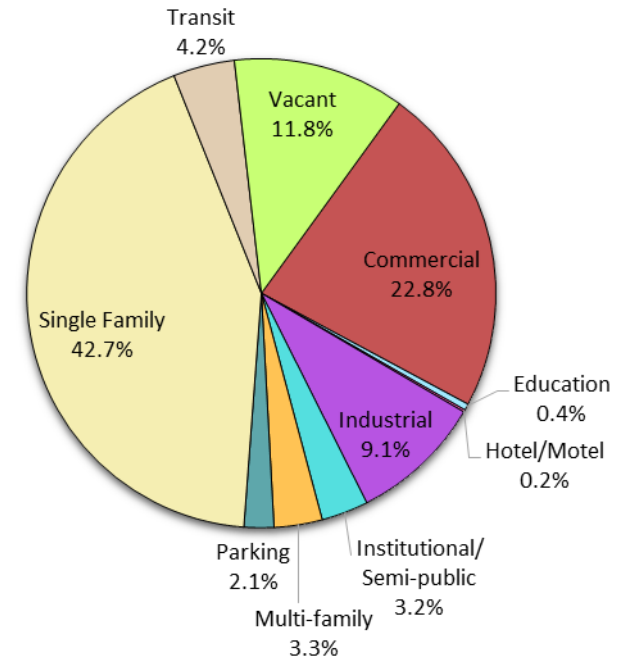
Land Use (2016) – Buckner Station



North Central Texas
Council of Governments



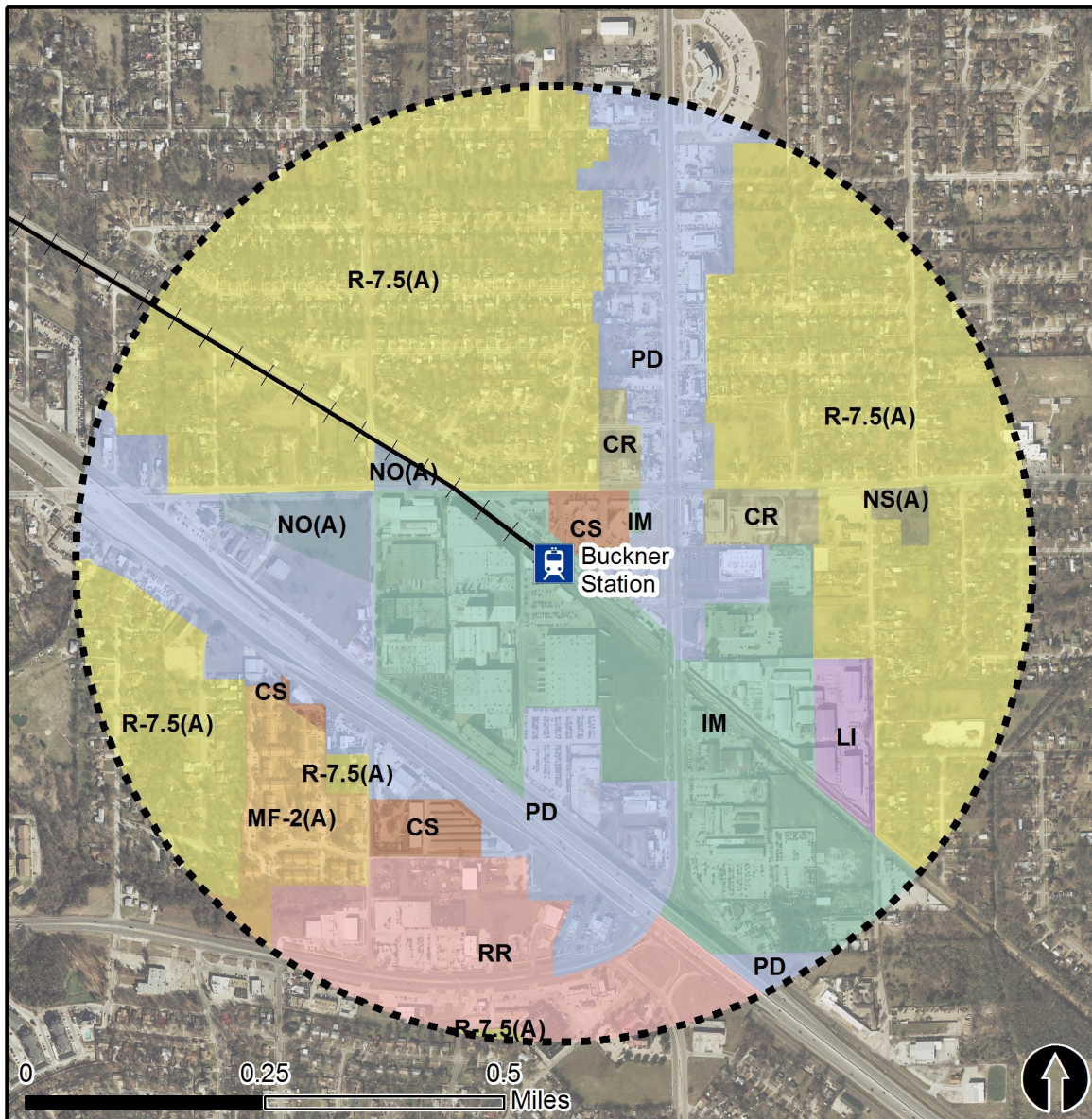
Land Use Percentages



0.5 Mile
Station Buffer

Rail Stations Rail Lines

Zoning (2016) – Buckner Station

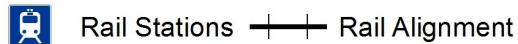


Zoning Districts

- CS – Commercial Service
- IM – Industrial Manufacturing
- LI – Light Industrial
- MF-2(A) – Multi-family
- NS(A) – Neighborhood Service
- NO (A) – Neighborhood Office
- PD – Planned Development District
- R-7.5(A) – Single Family District
- RR – Regional Retail

For more information on zoning, please visit the City of Dallas Zoning website at:

<http://gis.dallascityhall.com/zoningweb/>

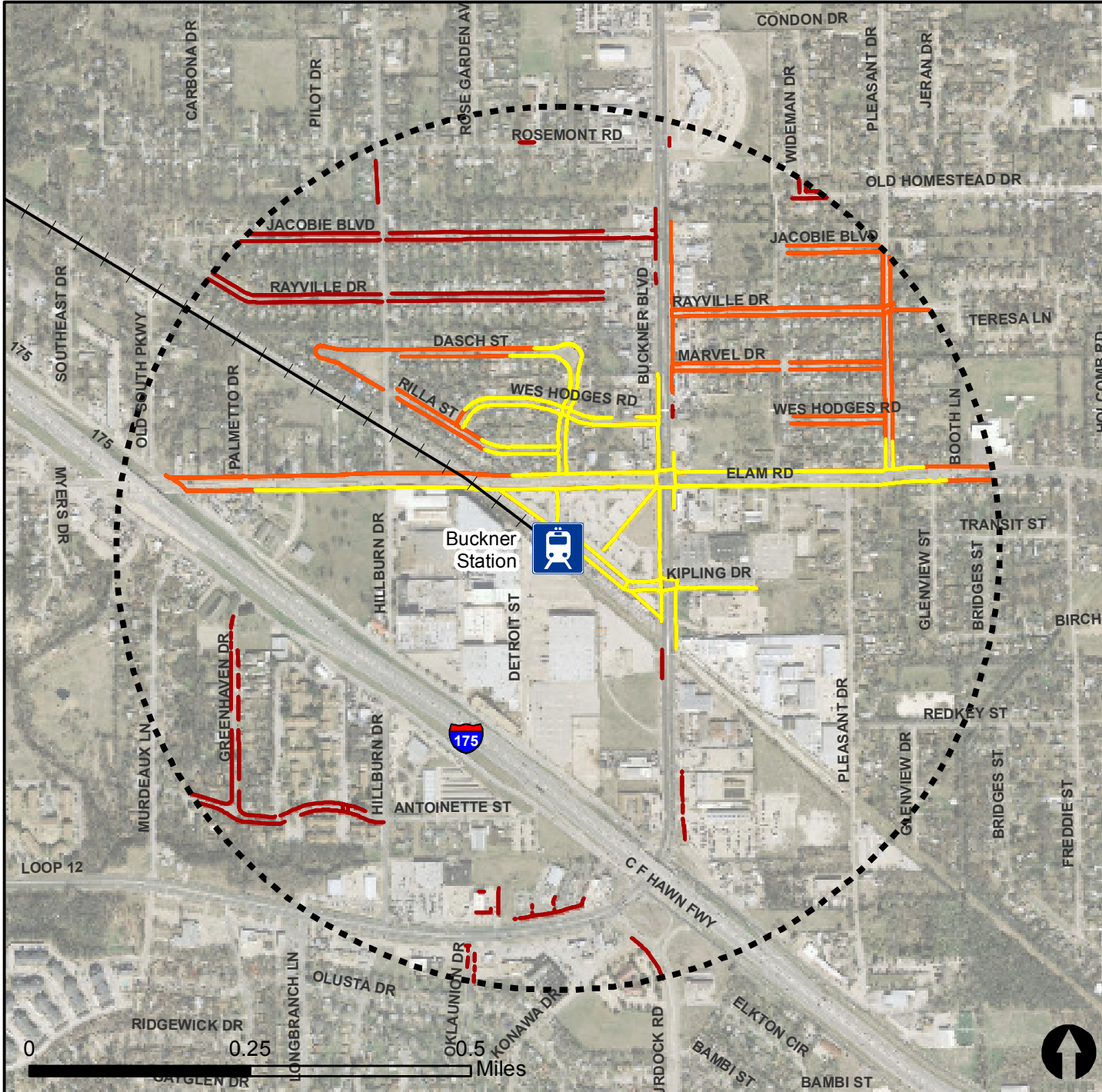


Pedestrian Routes to Rail - Buckner Station







Last Updated: February 2015



North Central Texas
Council of Governments

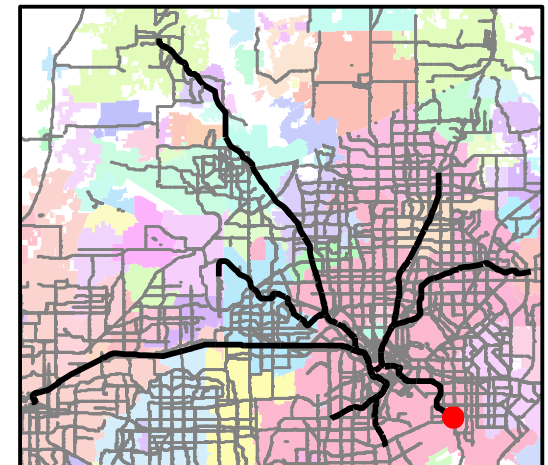


Legend

-  Rail Stations
-  0.5 Mile Station Buffer
-  Railroads
-  Existing sidewalk facilities within a 0.5 mile walk distance
-  Existing sidewalk facilities greater than a 0.5 mile walk distance
-  Existing sidewalk facilities that are disconnected due to a gap in the network

Project Overview

The Pedestrian Routes to Rail study identifies all existing pedestrian facilities within a half-mile radius of existing light rail and commuter rail stations in the Dallas-Fort Worth region based on 2014 data. ArcGIS Network Analyst tool was used to identify continuous facilities that are less than or greater than a half-mile actual walking distance to a station. The maps also reflect existing facilities that are disconnected due to gaps or other barriers not allowing a continuous pedestrian route to a station. The maps do not reflect the condition or ADA compliance of the existing infrastructure. More information on the Routes to Rail study and methodology is available at: nctcog.org/RoutesToRail

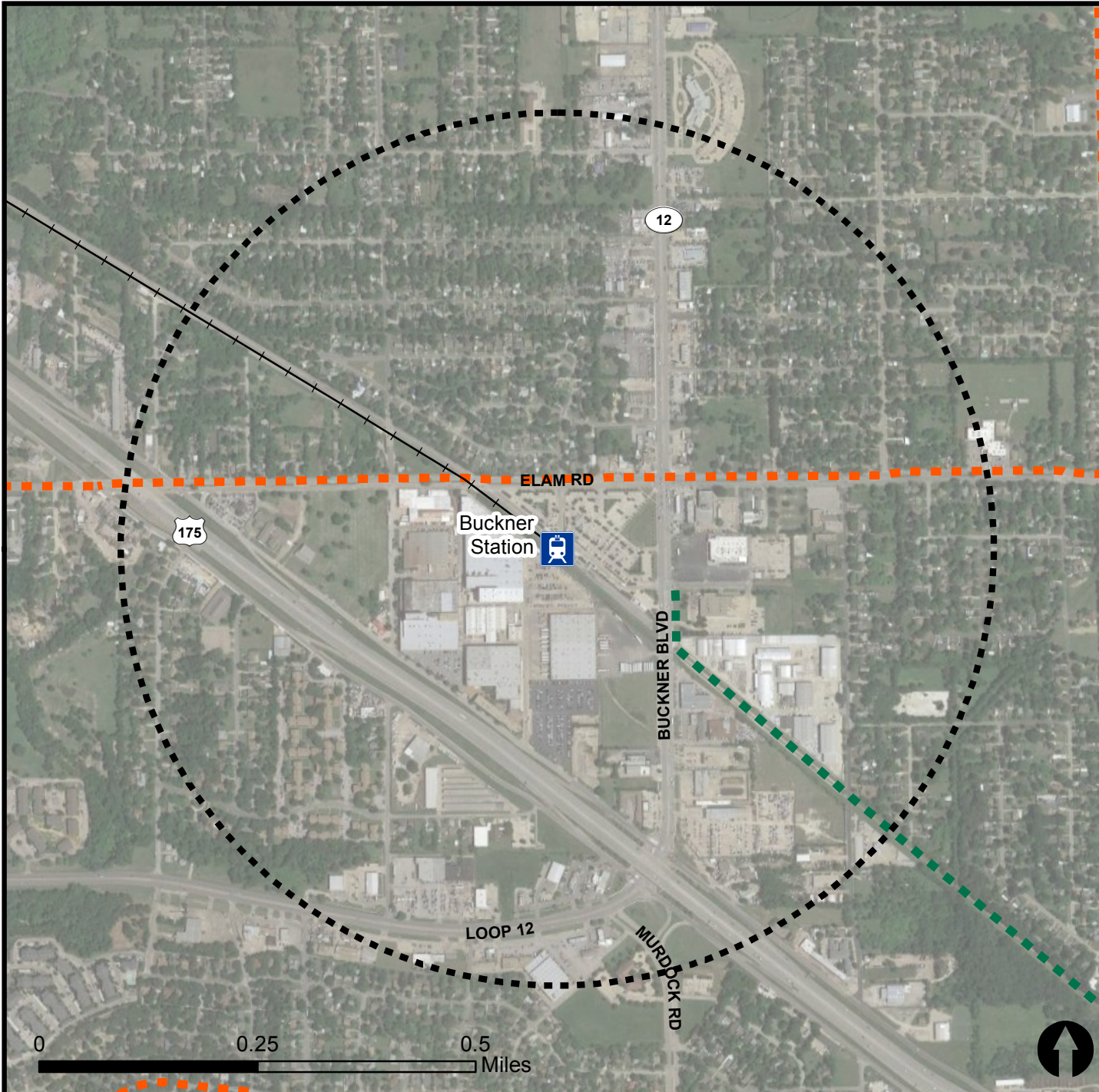


Bicycle Routes to Rail - Buckner Station

Last Updated: October 2016



North Central Texas
Council of Governments



Legend

- Rail Stations
- 0.5 Mile Station Buffer
- Rail Lines
- On-Street Bikeway, Existing
- On-Street Bikeway, Planned
- 2040 Veloweb
- Off-Street Path, Existing
- Off-Street Path, Planned

Project Overview

The Bicycle Routes to Rail study identifies all existing and planned bikeways in proximity to existing or under-construction light rail and commuter rail stations in the Dallas / Fort Worth region based on 2016 data. The maps reflect off-street paths (trails) and streets designated by local adopted master plans for dedicated bikeways (e.g. bike lanes, cycle tracks) located on the street. In accordance with the Texas Transportation Code, bicyclists have a right to the road. As such, the map does not reflect other roadways around the station that may have signed bike routes or by state law may be used by bicyclists. More information about the Routes to Rail study and methodology is available at:

nctcog.org/RoutesToRail

