

North Central Texas
Council of Governments

NCTCOG Flooding, Stormwater, and Water Quality Programs

June 21st, 2023

Welcome and Introductions

- Thanks for attending!
- This webinar will be recorded.
- Please mute your line.
- Unmute your line when you would like to speak.
 - We will also watch the [chat](#) box for questions

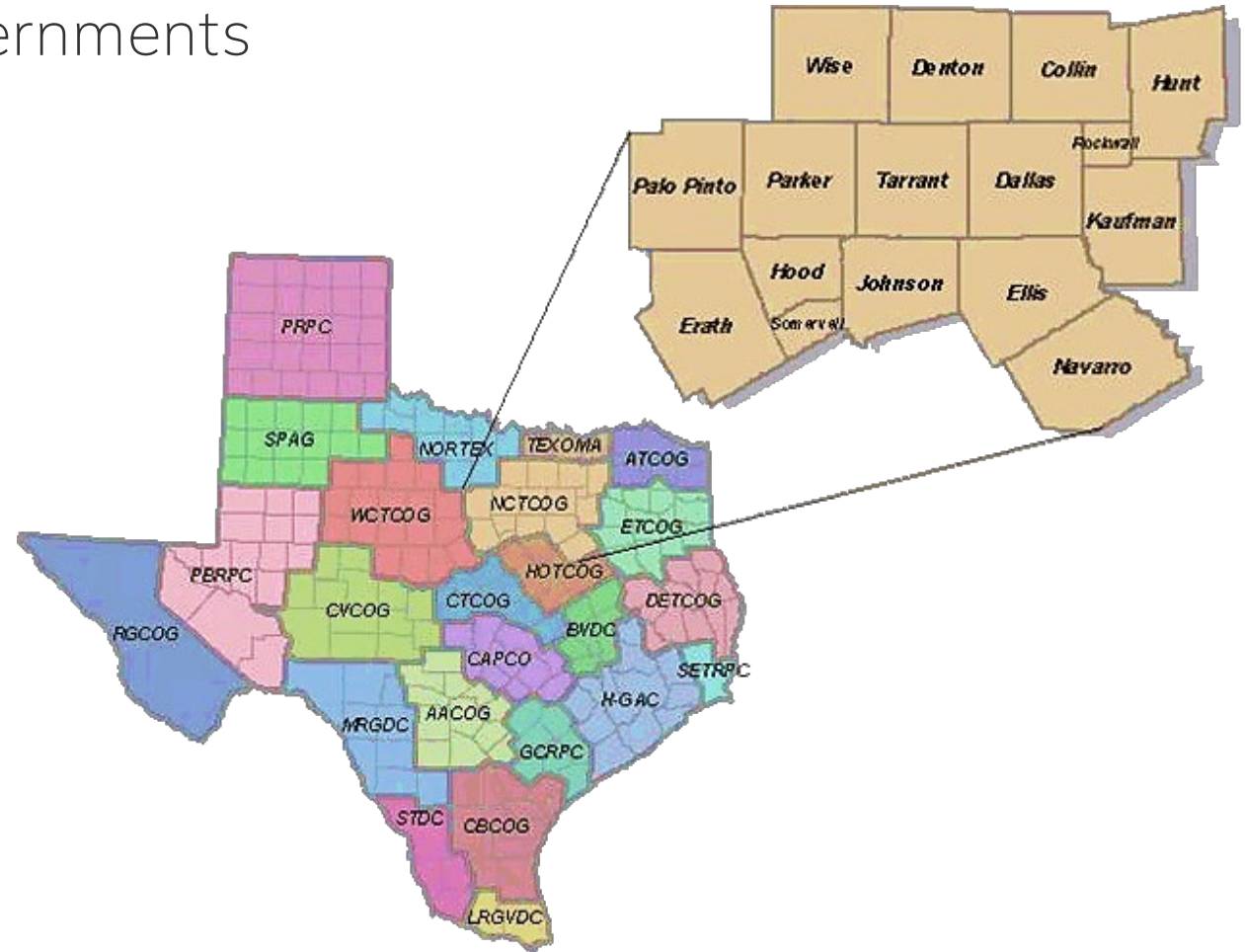
What is NCTCOG?

Voluntary association of local governments

- 228 Member Governments
 - 16 Counties
 - 169 Cities
 - 19 School Districts
 - 24 Special Districts

Assists local governments in:

- Planning for common needs
- Cooperating for mutual benefit
- Recognizing regional opportunities
- Resolving regional problems
- Making joint decisions



Environment & Development Overview



Materials Management

Regional Landfill Capacity
Recycling
Waste to Energy
Illegal Dumping
Technical Resources

Watershed Management

Stormwater Management
Water Quality
Trinity River Common Vision
Flood Risk Reduction

Natural Resources

Water Source & Supply
Energy
Open Space Planning/
Preservation

Public Works

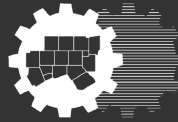
Construction Standards
Sustainable Public Rights of Way
Block Grants
Wastewater Roundtable

Development Excellence

Principles of Development Excellence
Technical Tools
Building Codes

Pre-Workshop Survey Questions

- Poll question will appear on your screen



North Central Texas
Council of Governments

Trinity River COMMON VISION Program



Timeline & Background

1990 Upper Trinity River Basin Reconnaissance Report

Upper Trinity River Feasibility Study (UTRFS)
US Army Corps of Engineers
Cumulative impacts of flooding based on different levels of floodplain development

\$11B

Record of Decision

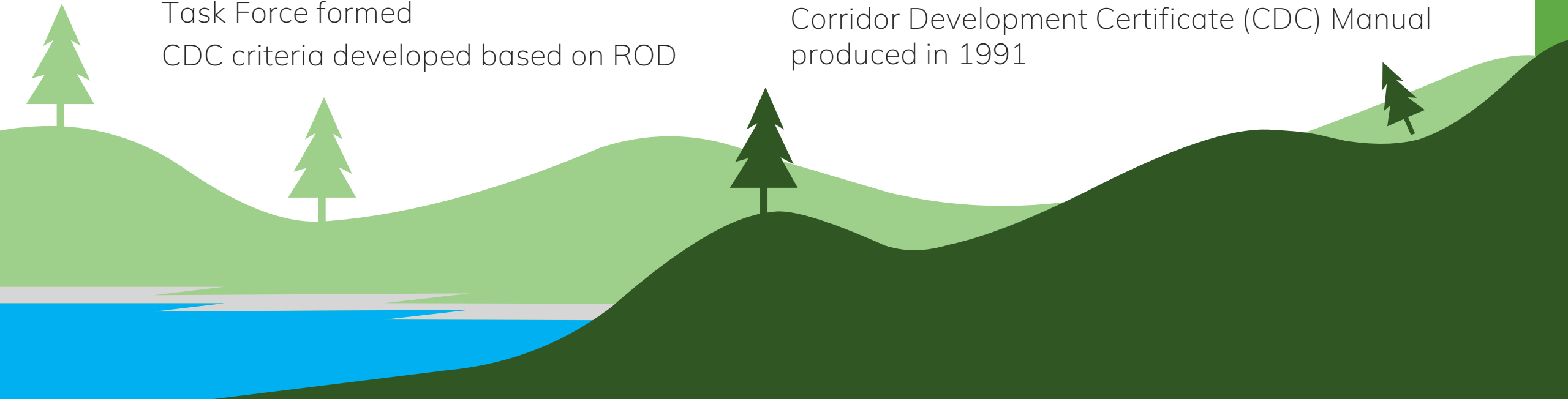
Damages could total more than \$11 billion if floodplain unregulated
Floodplain management could cut losses to \$4 billion

1990 Flood Management Task Force

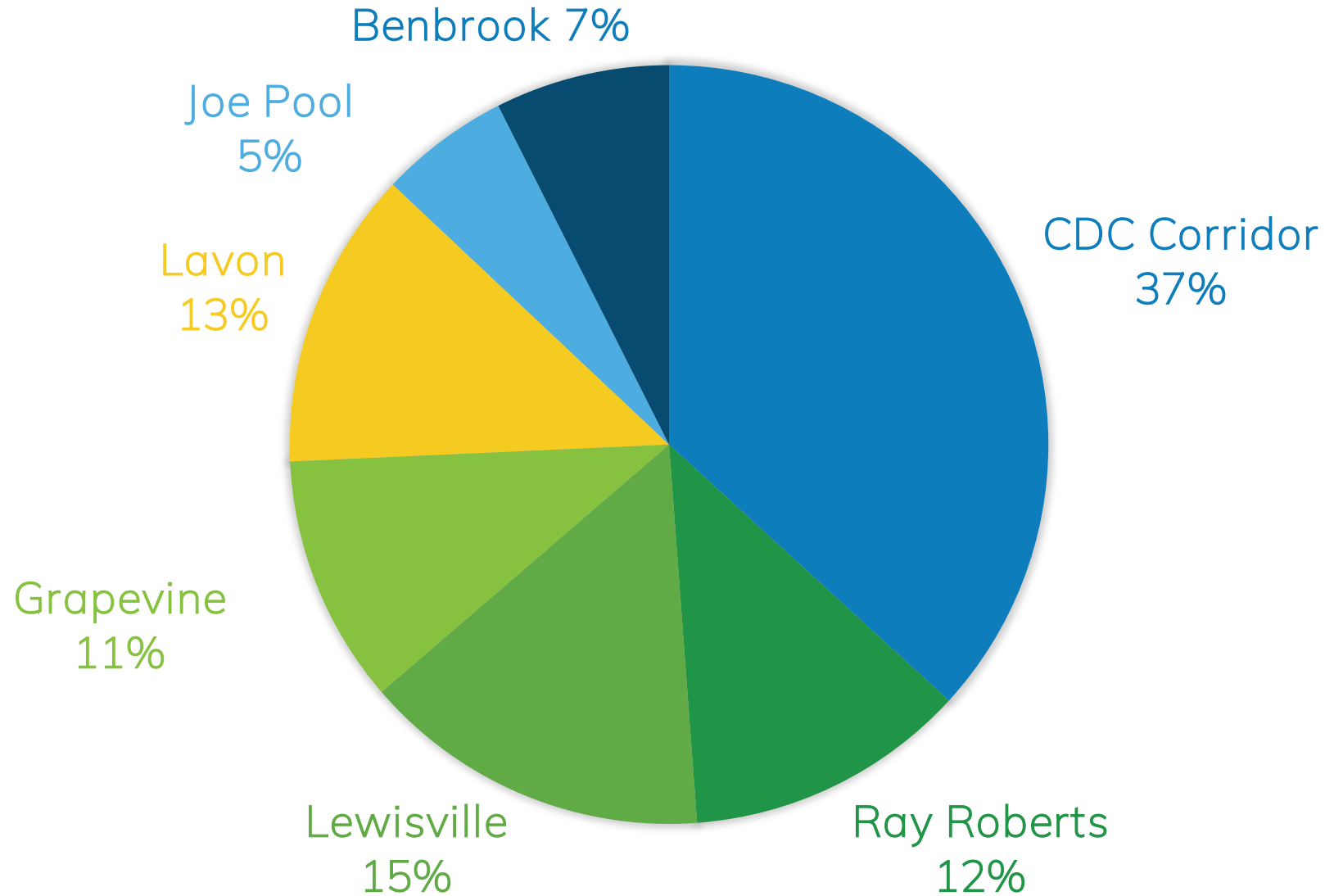
Task Force formed
CDC criteria developed based on ROD

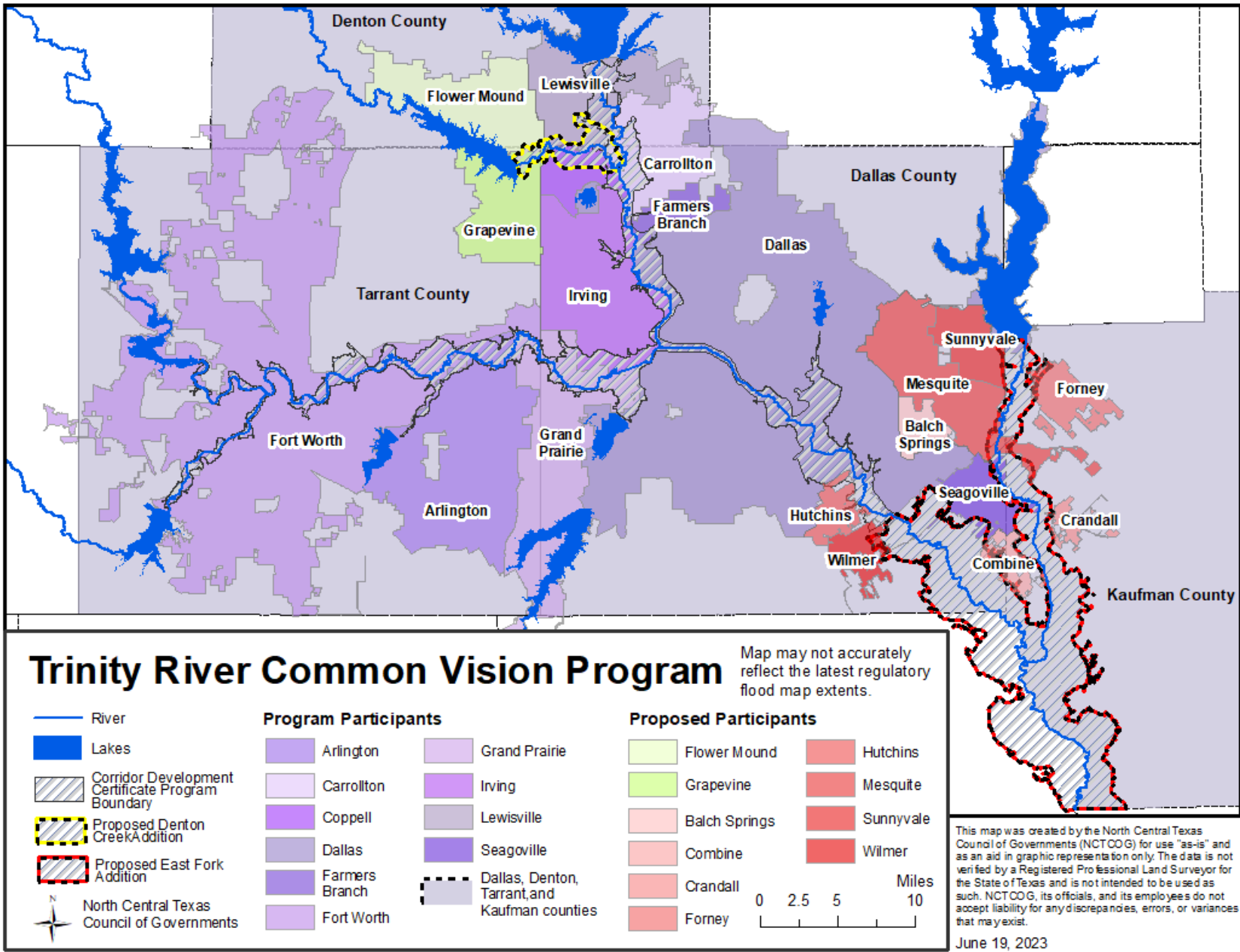
Corridor Development Certificate (CDC) Manual

Corridor Development Certificate (CDC) Manual produced in 1991



Active Flood Storage





1989 Interlocal Agreement

- 10 cities
- 4 counties

Programmatic Partners

- NCTCOG
- USACE
- FEMA
- TWDB

Special Districts

- TRWD
- TRA

CDC Program Goals

Corridor Development Certificate Program



Provides Oversight

Provides oversight for projects in the floodplain and establishes a regional review process

Allows Development

Allows development in the floodplain after receiving a CDC permit

Project Review

Allows all Flood Management Task Force (FMTF) members to review projects for the entire regulatory footprint

Trinity River CDC Website

Step 0: Pre-CDC Application Conference

Step 1: Submission of Application to City

Step 2: Submission of CDC Application

Step 3: Comment Period

Step 4: Application is sent to USACE for Review

Step 5: Technical Review Results/Model Update

step
00

Pre-CDC Application Conference

Communication is key in the CDC process. NCTCOG highly recommends that developers and potential CDC applicants hold a pre-CDC conference with the floodplain administrator of the CDC Permitting Entity in which the project is located.



step
01

Developer Submits Application to City

If a developer wants to develop in the floodplain, they first download the model and insert their project. The developer then meets with the CDC Permitting Entity to get their application in order. This step may vary by jurisdiction.



step
02

City Submits CDC Application

The CDC Permitting Entity submits the CDC Application and fees to the Trinity COMMON VISION program through this website.



step
03

Municipalities Offer Comments

Starting the day the application is submitted, CDC communities are notified and have 30 days to review and provide comments on the application.



step
04

Application Sent to USACE for Review

The application and all documentation is sent to the U.S. Army Corps of Engineers (USACE) for review. The USACE will coordinate review with the Applicant's engineer representative during the review process.



step
05

Project Added to CDC Model

The project is added to the CDC Model by USACE after the CDC permit is granted by the submitting CDC Permitting Entity.



Trinity River CDC Website

A large graphic for the Trinity River CDC Website. It features a background image of a river flowing through a rocky, vegetated landscape. Overlaid on the center is a large 'TR' logo where the 'T' is green and the 'R' is blue. Below the logo, the text 'TRINITY RIVER' is written in green and blue, and 'Corridor Development Certificate' is written in black.

TRINITY RIVER Corridor Development Certificate



The goal of the Corridor Development Certificate (CDC) process is the stabilization of flood risk along the Trinity River. The CDC program originated in 1991 as part of the awareness in the 1980s that commercial and residential development in the Trinity River corridor, individually or cumulatively, were considered to have the potential to compromise existing flood control protection afforded to floodplain residents, and to impact wetlands and other natural resources. The CDC does not prohibit floodplain development, but ensures that any development that does occur in the floodplain will not adversely raise flood water levels or significantly reduce flood storage capacity.

The CDC process allows local governments to retain ultimate control over floodplain permitting decisions, while other communities along the Trinity River Corridor are given the opportunity to review and comment on projects in their neighbor's jurisdiction. As the Metroplex economy continues to grow and develop, the CDC process will help prevent increased flood risks.

Trinity River CDC Website

Status Definitions

Granted: The CDC Application has gone through the full CDC process and the permitting entity has granted a CDC.

Exemption Granted: The permitting entity has determined the project is exempt from the CDC criteria (Section 1.6.1 of the CDC Manual 4th Edition).

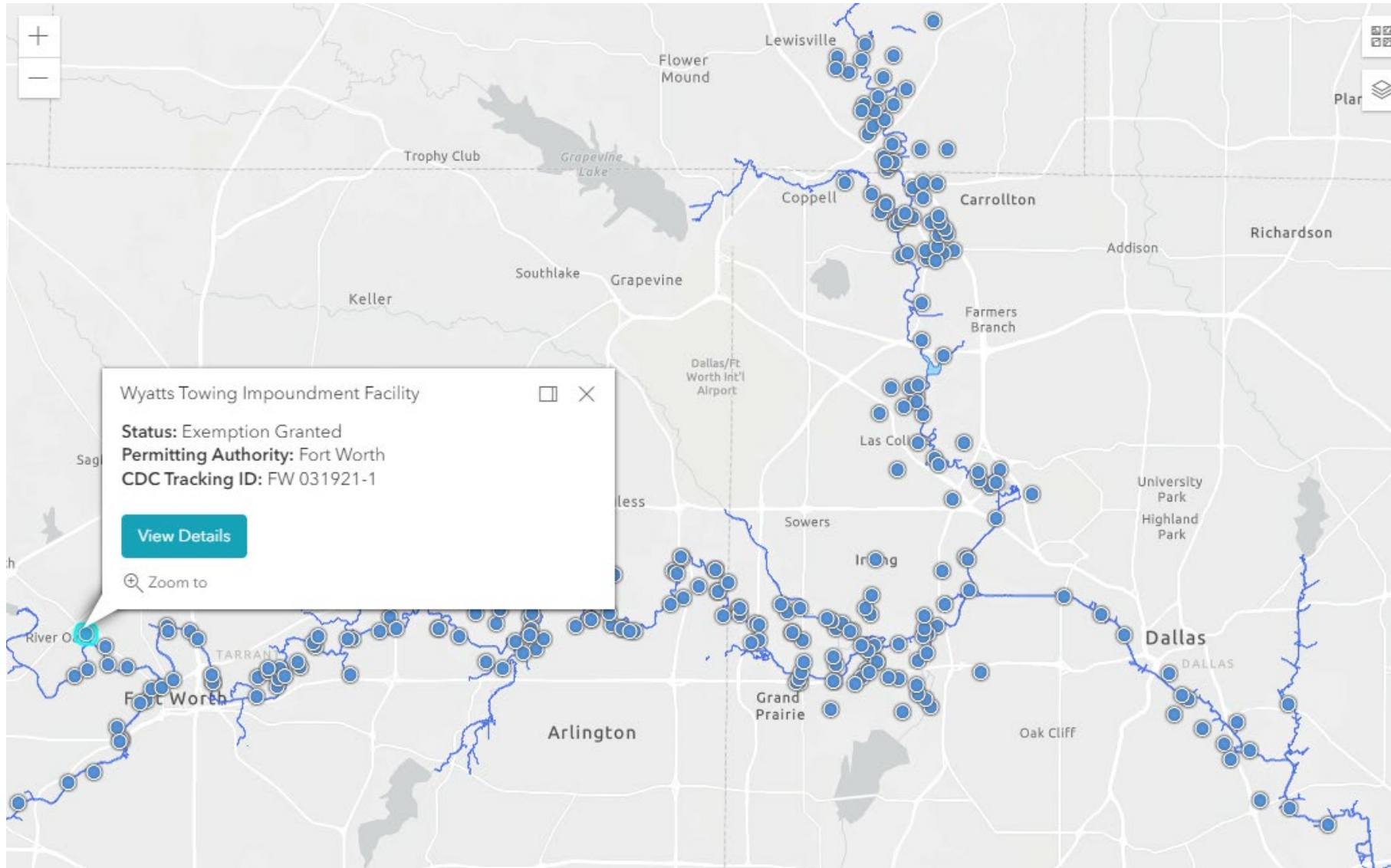
Variance Granted: The permitting entity has given this project a variance from the CDC criteria (Section 1.6.2 of the CDC Manual 4th Edition).

Comment Period: The CDC Application is currently in the 30-day review period by the CDC participating entities (Section 1.3.6 of the CDC Manual 4th Edition).

Under Review: The CDC Application is currently under Technical Review by the United States Army Corps of Engineers (USACE) (Section 4.1.7 of the 4th Edition CDC Manual).

CDC Tracking Number	Project Name	Jurisdiction	Status	Last Updated ↑↓
IRV 053123-01	Maintenance Fill, West Levee	Irving	🔄 Comment Period	05/31/2023
FW 092622-1	Colonial Country Club	Fort Worth	✅ Granted	05/04/2023
FW031623-1	VCWRF Bio Solids Facility Bank Stabilization	Fort Worth	✅ Exemption Granted	04/17/2023
cdc-000	Project Name Default2023-03-13 11:14:09	xArlington	🔄 Comment Period	03/13/2023
DAL 111020-1	9328 Harry Hines	Dallas	⚠️ Technical Review	02/22/2023
LEW 081522-1	Lewisville Landfill	Lewisville	✅ Granted	02/16/2023
FW052322-1	Trinity Trails East Phase 2	Fort Worth	⚠️ Technical Review	02/08/2023
GP 040122-1	Oakdale Industrial III	Grand Prairie	⚠️ Technical Review	02/08/2023

Trinity River CDC Website



Trinity River CDC Website

● Comment Period Open	● Payment Received by NCTCOG	● Payment Sent to USACE	● CDC Exemption	● USACE Does Not Meet Criteria
<ul style="list-style-type: none"> City of Arlington Parks and Recreation CDC-78 06-15-2023 Irving Flood Control District-Section 1 (IFCD#1) CDC-77 05-31-2023	No jobs in this stage	No jobs in this stage	<ul style="list-style-type: none"> City of Fort Worth CDC-65 08-17-2022 City of Fort Worth CDC-64 08-17-2022 City of Fort Worth CDC-63 06-30-2022 Go Ape River Legacy Park, LLC - Becky Staley CDC-60 06-09-2022 City of Grand Prairie CDC-54 02-11-2022	No jobs in this stage

North TXShare Program: OneRain in Regional Flood Warning Software Program

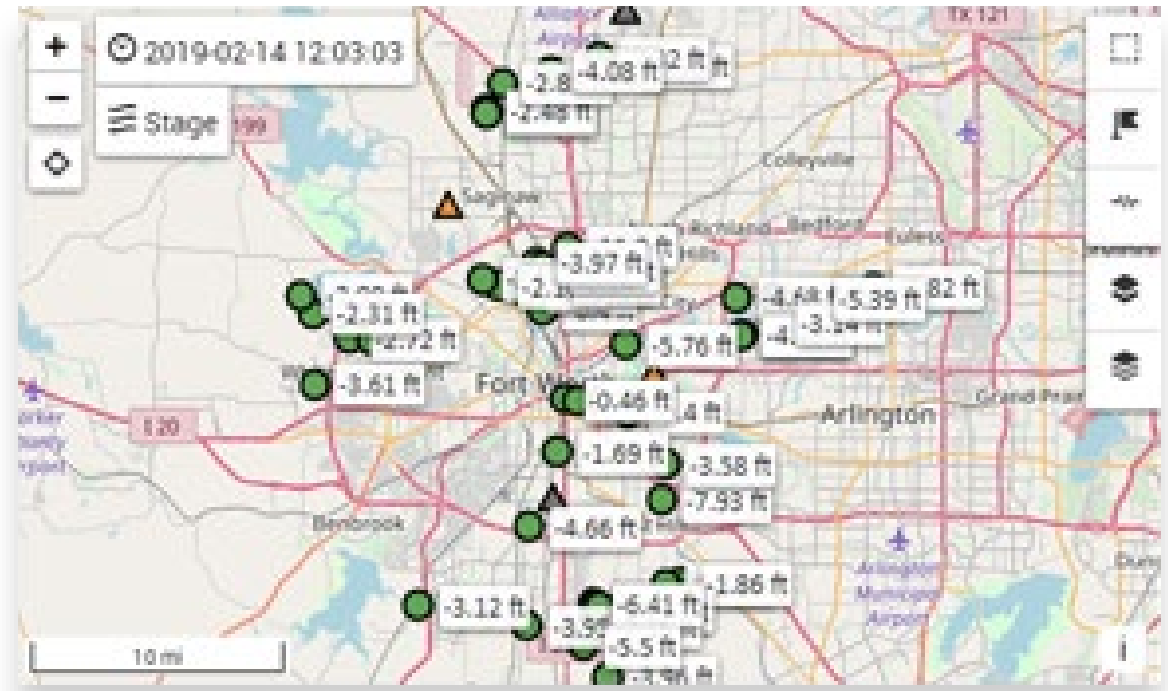
Enterprise-level hydrologic and flood warning software

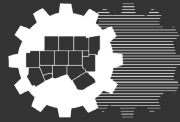
Leverages existing gauging networks in the region

Provides centralized-view to alarm, visualize, and disseminate information

Real-time conditions

OneRain
The Rainfall Company





North Central Texas
Council of Governments

Community Rating System Users Group

Community Rating System (CRS) Users Group

FEMA voluntary incentive program

Promotes floodplain management practices that exceed the minimum requirements of the National Flood Insurance Program (NFIP).

CRS Users Groups provide a forum for municipal, county, regional, and state networks to support one another in qualifying for CRS credit.

North Central Texas group meets quarterly

Activities to Earn Credits

Public Information

- Programs that advise people about the flood hazard, flood insurance, and ways to reduce flood damage

Mapping & Regulations

- Programs that limit floodplain development or provide increased protection to new and existing development

Flood Damage Reduction

- Programs that reduce the flood risk to existing development

Flood Preparedness

- Flood warning, levee safety, dam safety projects

Discounts available to property owners in CRS communities

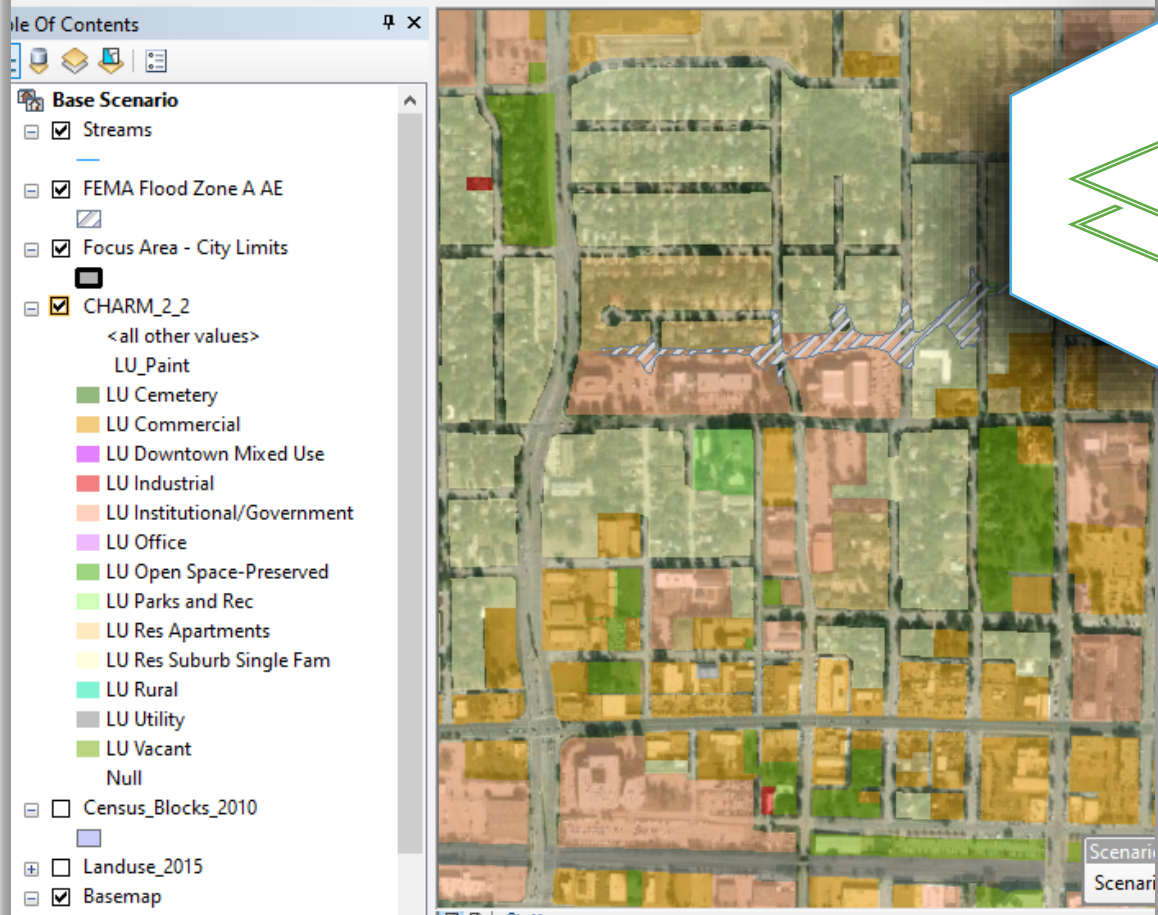
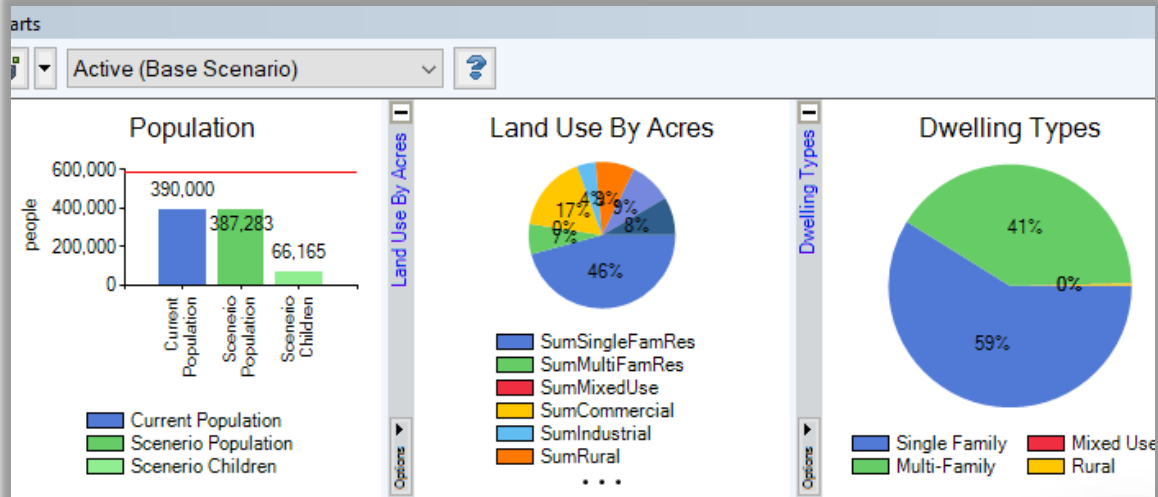
Rate Class	Discount for SFHA*	Discount for Non-SFHA**	Credit Points Required
1	45%	10%	4,500 +
2	40%	10%	4,000–4,499
3	35%	10%	3,500–3,999
4	30%	10%	3,500–3,499
5	25%	10%	3,000–2,999
6	20%	10%	2,500–2,499
7	15%	5%	1,500–1,999
8	10%	5%	1,000–1,499
9	5%	5%	500–999
10	0	0	0–499

* Special Flood Hazard Area

** Preferred Risk Policies are available only in B, C, and X Zones for properties that are shown to have a minimal risk of flood damage. The Preferred Risk Policy does not receive premium rate credits under the CRS because it already has a lower premium than other policies. Although they are in SFHAs, Zones AR and A99 are limited to a 5% discount. Premium reductions are subject to change.

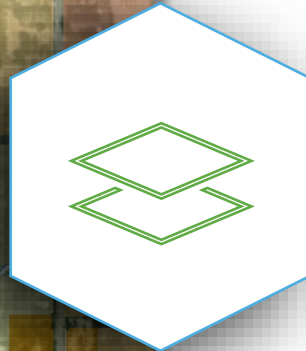
NCTCOG North Texas CHARM Workshops





What is North Texas CHARM?

Community
Health
And
Resource
Management



Texas A&M AgriLife Extension

- Developed by the Texas Community Watershed Partners program through FEMA funding
- Hosts workshops across Texas and the country.



NCTCOG

- Worked with AgriLife to host workshops across North Texas Communities



Scenarios

- Population Growth
- Flood Mitigation
- Emergency Resiliency
- Social Vulnerability
- Housing Equity
- Access to Green Space
- Community Specific Goal



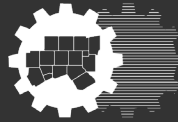
- 85 cities and 8 counties
- Expected to grow by 2,000,000 residents by 2045
- 19% growth in impervious surface from 2006 – 2016

- The CHARM tool is a user-friendly GIS mapping application that anyone can use
- Paint changes onto a map of your city and watch in real time the results of those changes



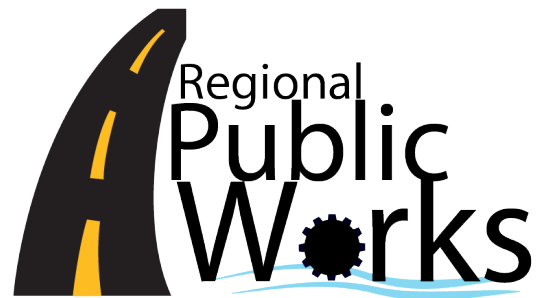
CHARM Workshop

Fostering meaningful conversations among stakeholders regarding future planning and resiliency.



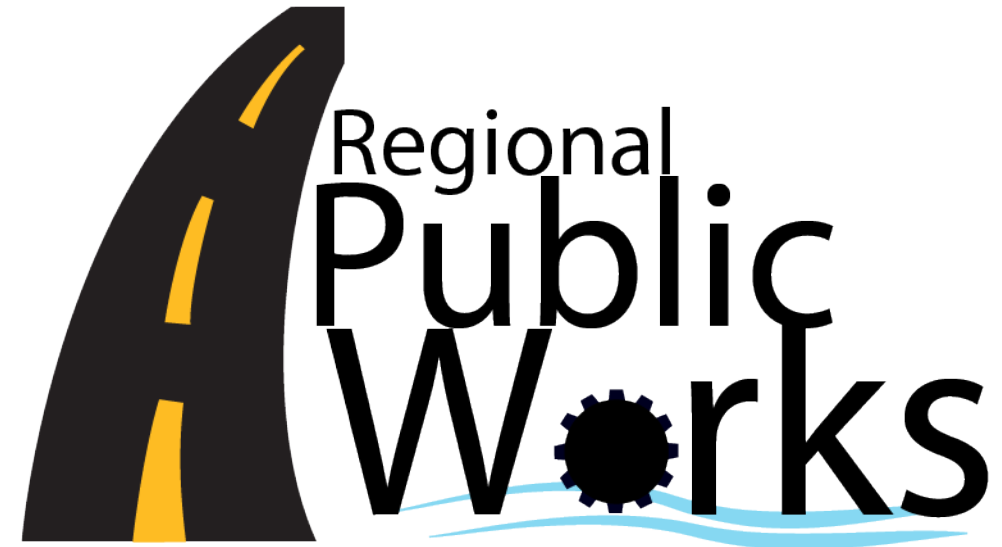
North Central Texas
Council of Governments

Regional Public Works Program



Regional Public Works Program Mission Statement

- Exchanging ideas
- Pooling resources to address common needs
- Establishing uniform standards to produce better products at lower costs
- Developing the public works profession in North Central Texas



What the Regional Public Works Program includes:

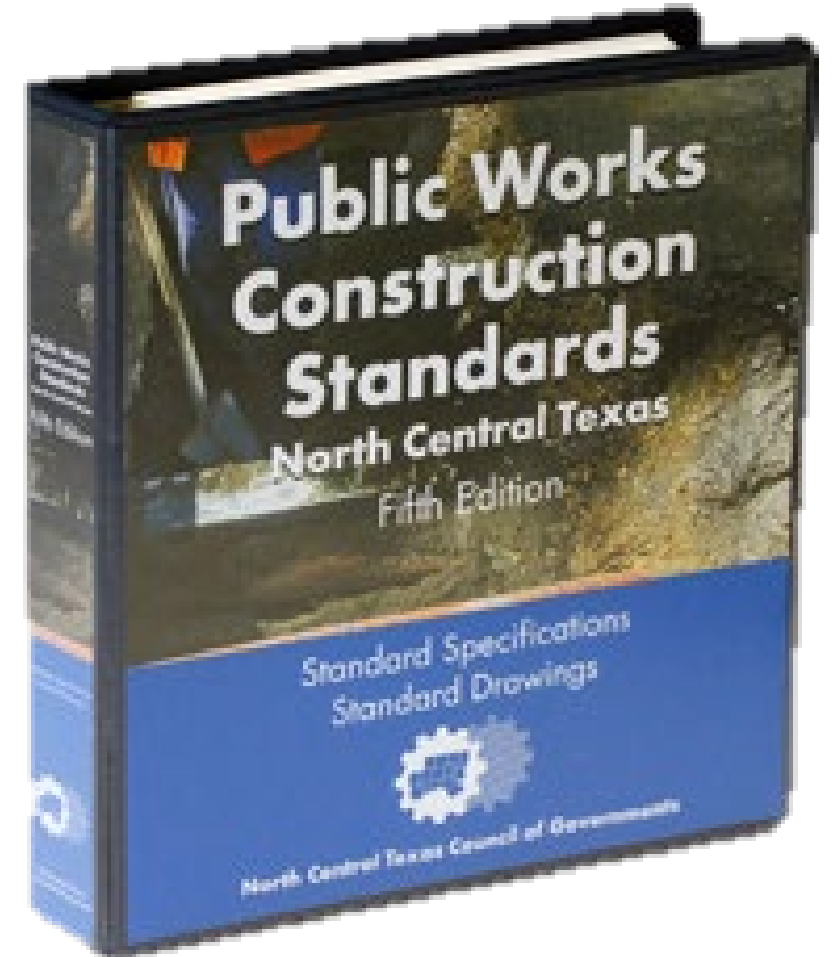
- Ongoing Public Works Council support
- Continuing development of a Sustainable Public Rights-of-Way (SPROW) Best Management Practices (BMP) Guidebook
- Hosting public works trainings and maintaining the Public Works Training Calendar
- Continuing service as a FEMA Cooperating Technical Partner (CTP)
- Updates to the Public Works Construction Standards drawings
- Continuing development of technical resources and adoption of the integrated Stormwater Management Program (iSWM)
- Hosting the Public Works Roundup
- Coordination of cooperative purchasing agreements

Construction Standards

Guides infrastructure development in North Central Texas

General provisions, roadway construction, pavement, stormwater drainage

Specifications and standard drawings



Sustainable Public Rights of Way

Promote best practices to:

- Improve air and water quality
- Improve infrastructure life cycle and performance
- Promote economic development
- Promote integration of rights of way and surrounding land use



integrated Stormwater Management Program (ISWM)



Reduce flooding

Meet state/federal regulations

Improve water quality

Reduce operation costs

NCTCOG technical assistance

iSWM Criteria
Manual
(For Adoption)

iSWM Technical
Manual
(For Reference)

iSWM
Program

iSWM Tools
(For Reference)

iSWM Program
Guidance
(For Reference)

Why Adopt iSWM?

1. iSWM™ Helps Keep Residents Safe
2. iSWM™ Protects Property Value
3. iSWM™ Improves Water Quality
4. iSWM™ Helps Meet State and Federal Regulations



iSWM Program Benefits and Incentives:

- NCTCOG Provides:
 - Free training to iSWM communities and their designated design consultants
 - Classes for larger, municipal audiences, such as planners
 - Plaques that can be displayed in communities
 - Signage that designates a community's level of iSWM implementation

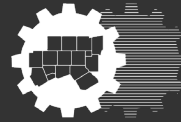


iSWM Program Benefits and Incentives:

Other benefits:

- Adoption of higher standards may provide credits toward a lower FEMA Community Rating System (CRS) rating, equating to reduced insurance rates for your community's residents
- Natural systems can reduce on-going operation and maintenance costs
- A community with more natural features is likely to be more sustainable – and more desirable – over time





North Central Texas
Council of Governments

Regional Stormwater Management Program



Stormwater Program Overview

Regional Stormwater Management Coordinating Council (RSWMCC) provides guidance for a comprehensive regional approach to stormwater management. Ongoing activities include:

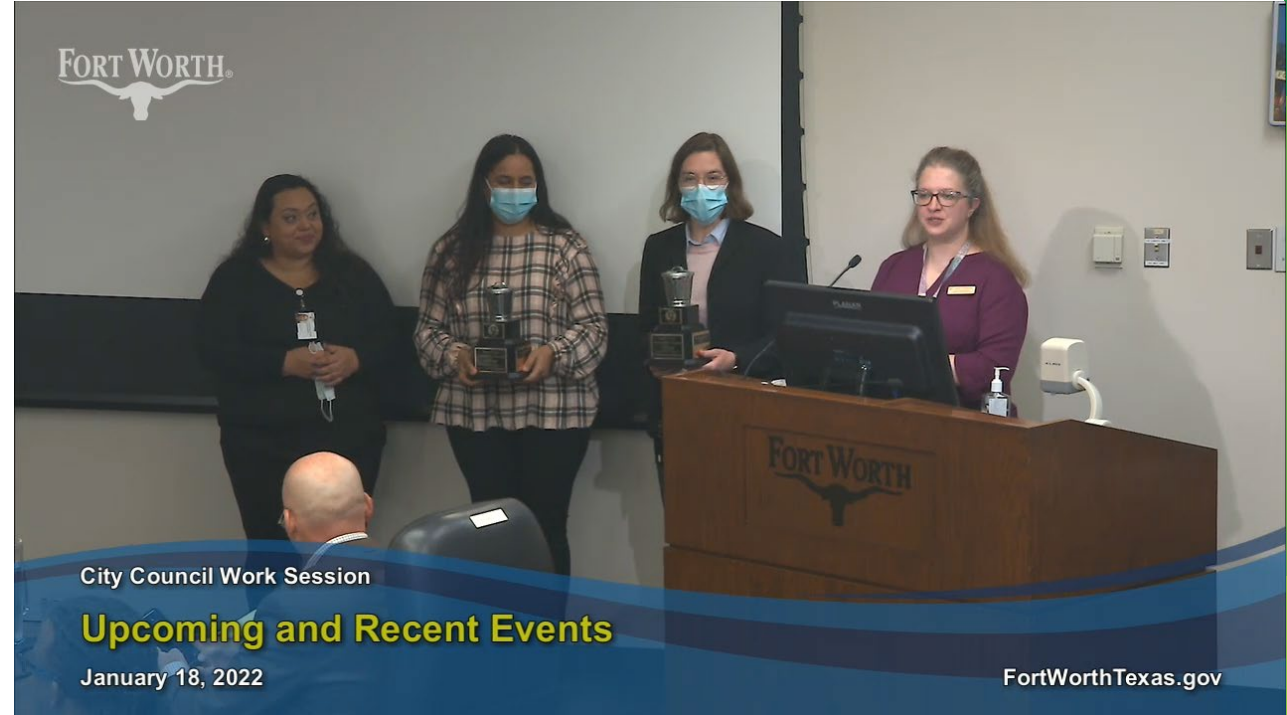
- Assisting with Stormwater Management Plans (SWMP)
- Identifying regional cooperative opportunities
- Hosting roundtables focused on construction/post-construction
- Supporting and maintaining the regional stormwater website
- Creating and maintaining a case study library of resources and tools
- Providing public education and outreach

Public Education Task Force (PETF)

- Promotes municipal stormwater public education through the exchange of professional experience, exploration, development, and opportunities for cooperation.

Public Outreach Campaigns & Efforts:

- Doo the Right Thing
- Texas SmartScape
- North Texas Community Cleanup Challenge
- Yard Waste



Regional Stormwater Management - Illicit Discharge Detection & Elimination Roundtable

The Regional Stormwater Management Program's IDDE Task Force, composed of representatives from participating local governments, meets quarterly to discuss opportunities for regional cooperation and initiatives, as well as to share ideas, questions, and challenges faced in managing local programs.

Workshops

- Industrial Inspectors Training
- Basic Dry Weather Field Screening Workshop
- Municipal Industrial Inspector Workshop

Regional Stormwater Management – Pollution Prevention

Pollution prevention, (P2) is any practice that eliminates or reduces pollution at its source. The goals of the P2 Roundtable are:

- Prevent or reduce pollutant runoff from municipal operations
- Remove floatables and other pollutants discharged from storm sewers
- Develop procedures for proper disposal of wastes

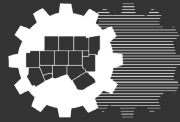


BMP Library

Minimum Control Measures (MCMs)

- Public Education, Outreach, and Involvement
- Illicit Discharge Detection & Elimination
- Construction Site Stormwater Runoff Control
- Post-Construction Stormwater Management in New Development and Redevelopment
- Pollution Prevention and Good Housekeeping for Municipal Operations





North Central Texas
Council of Governments

Water Quality Management Program

Water Quality Management Overview

NCTCOG is the Regional Water Quality Planning Agency for North Central Texas in 1975.

Responsible for developing the Water Quality Management Plan (WQMP) for 16-county North Central Texas region.

The Water Resources Council assists NCTCOG in updating the WQMP.

Water Quality Management Planning (WQMP) program

The purpose of the WQMP is to help identify potential needs and priorities for improving water quality in the region. In meeting that purpose, the WQMP provides data on water quality, water supply, and wastewater sources and discharges.

- Identify water quality programs that contribute to watershed protection and water quality improvements
- Identify issues that impact water quality, wastewater treatment strategies, and water supply
- Update all data and sources with the most recent information available
- Map the locations of permitted on-site sewage facilities (septic systems) in the NCTCOG region

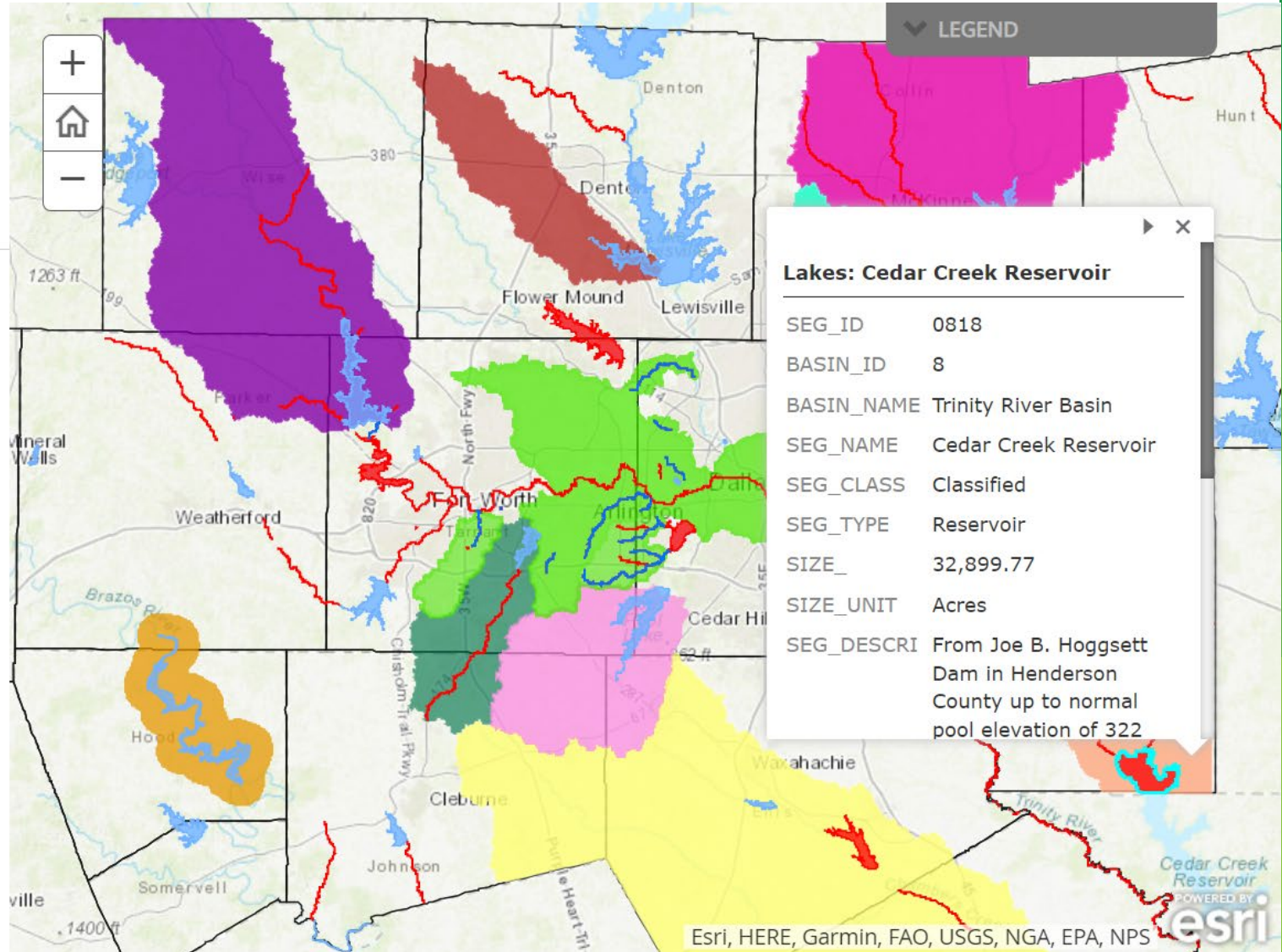
Water Quality Management Plan

A Story Map



2022 Update to the North Central Texas Water Quality Management Plan - Executive Summary, Water Quality Overview

NOTE: All the water quality data in this interactive mapping tool was downloaded from TCEQ's [GIS Data Hub, Water Programs](#), which uses data from the most recent report on the status of Texas' waterways, the [2020 Texas Integrated Report of Surface Water Quality and Texas 303\(d\) List](#) (Integrated Report). TCEQ adopted the draft 2020 Integrated Report on March 25, 2020, and EPA approved the 2020 Texas 303 (d) List on May 12, 2020. EPA recently approved the [2022 Integrated Report](#) on July 7, 2022, too late for inclusion in the 2022 Update to the North Central Texas Water Quality Management Plan. However, the data will be





North Central Texas
Council of Governments

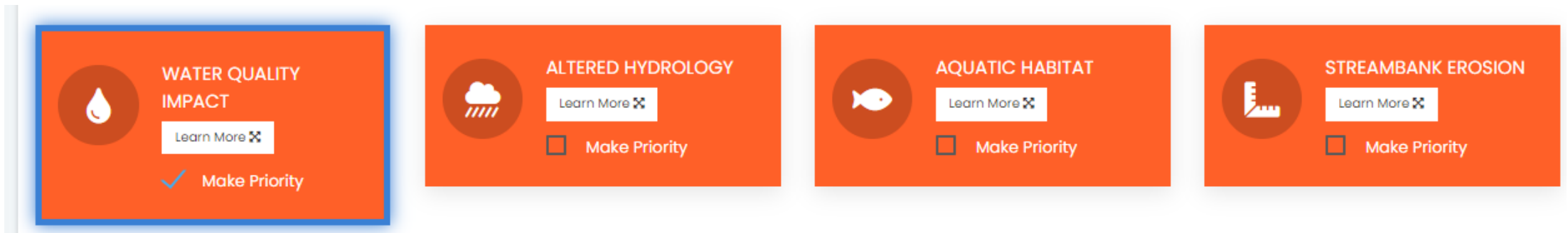
Economic & Environmental Benefits of Stewardship Tool (EEBS)



Goals in Developing EEBS

The tool identifies:

- Environmental effects of new transportation projects
- Appropriate stewardship activities to reduce these effects
- Environmental and economic benefits of implementing stewardship activities



EEBS Website

<http://eebs.nctcog.org>

Economic & Environmental Benefits of Stewardship

- Evaluate My Project
- Documentation
 - User Guide
 - Case Studies
 - Stewardship Information
 - Data Report
 - About

Economic & Environmental Benefits of Stewardship

User Guide

Step by step guide for how to use the project evaluation tool.

[Read User Guide](#)

Project Evaluation Tool

The Economic & Environmental Benefits of Stewardship tool can estimate the return on investment of implementing environmental stewardship to reduce the environmental effects of transportation projects. The tool can educate decision-makers about the value of environmental stewardship.

[Evaluate My Project](#)

Stewardship Information

Browse our library of stewardship options and download or print informational fliers.

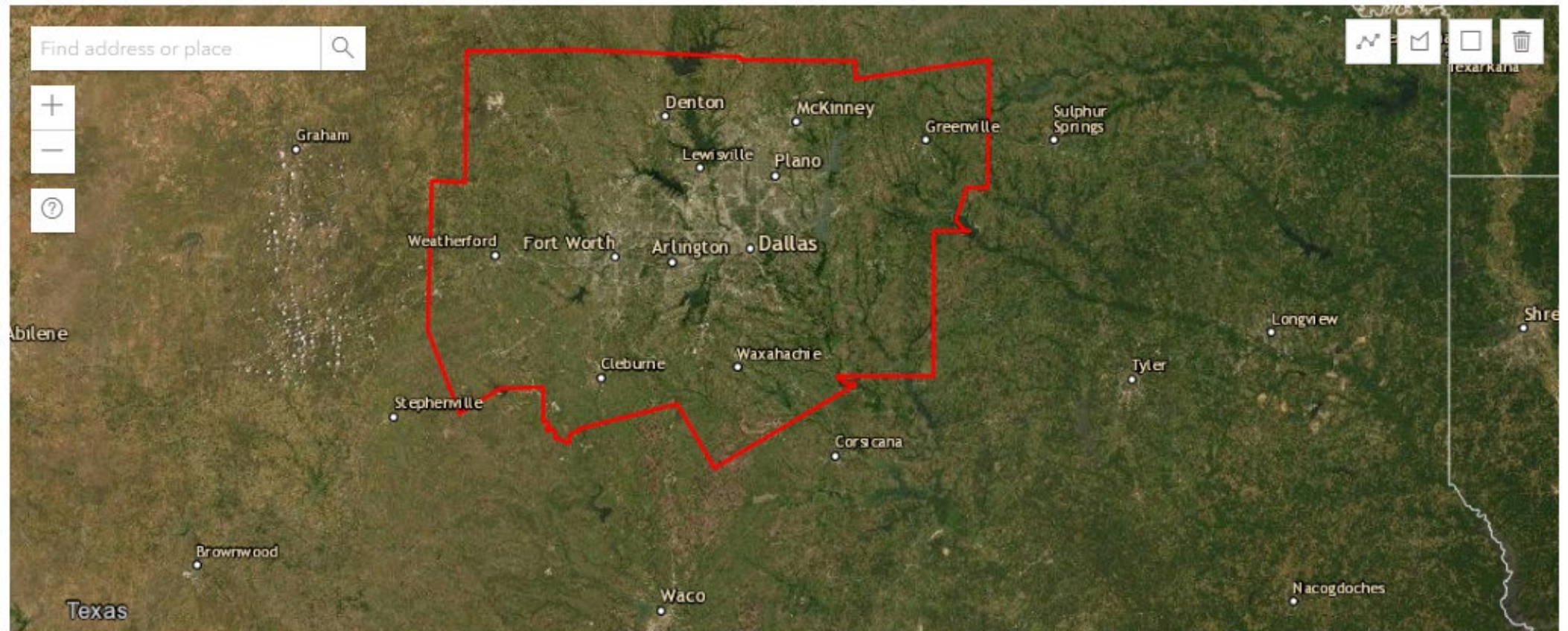
[Stewardship Information](#)

Draw Project Boundaries

Evaluate My Project

Home > Stewardship Evaluation Tool

1. Draw Your Project Boundaries



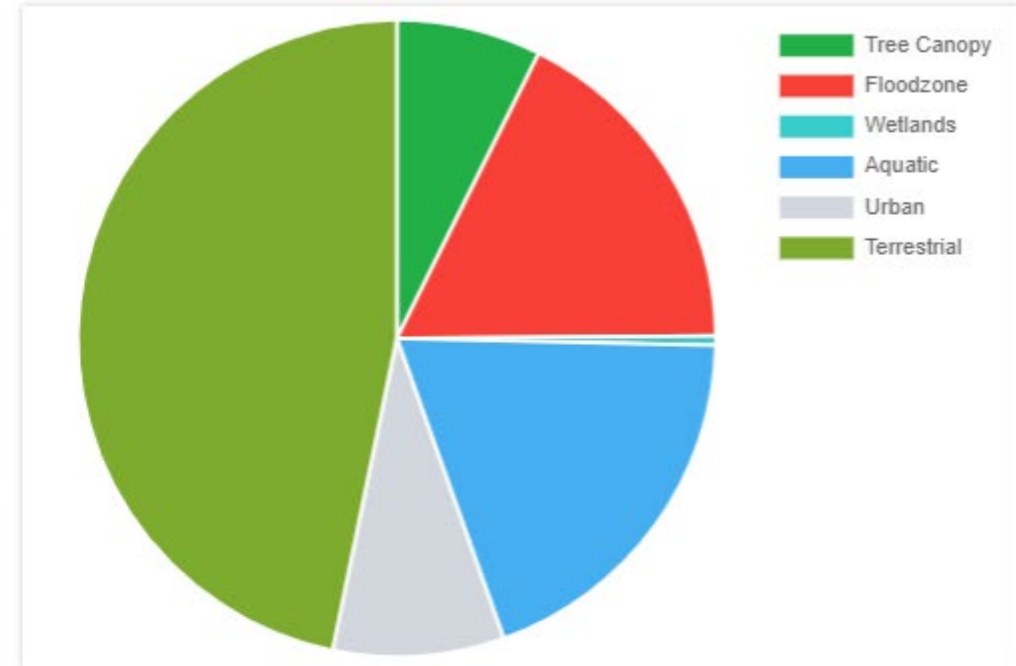
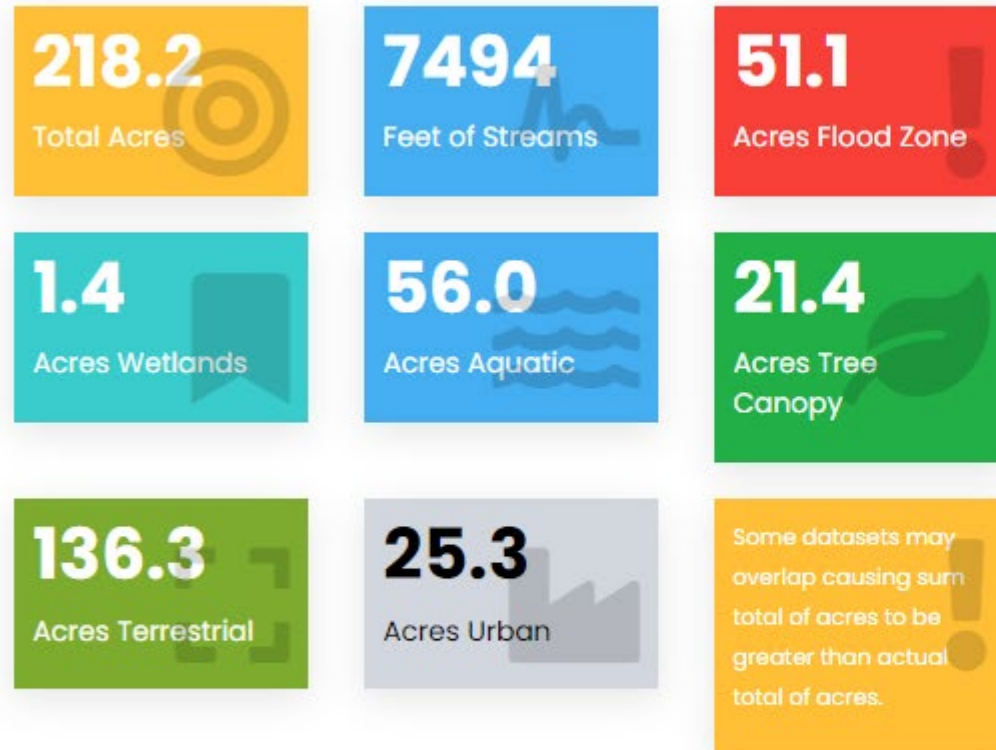
Define Project Type and Size

2. Tell Us About Your Project

Project type:	Will the project open up new areas for development?
<input type="text" value="New Roadway"/>	<input type="text" value="Yes"/>
Number of Lanes: <input style="background-color: #007bff; color: white; width: 20px; height: 15px; border: none; border-radius: 3px; vertical-align: middle;" type="text" value="?"/>	Total width of project (ft):
<input type="text" value="6 Lane Road (108ft width)"/>	<input type="text" value="108"/>

Review Potential Environmental Effects

3. Your Project Analysis










Your project may affect a resource that may require regulatory compliance. Stewardship options provided may not meet the necessary requirements. Further coordination with regulatory agencies and mitigation may be required.

Explore and Prioritize Potential Environmental Effects

4. Potential Environmental Effect of Your Project

These numbers represent the environmental cost of one acre of transportation project if no stewardship efforts are implemented. The transportation project may be larger or smaller than one acre, affecting this cost. Not all environmental costs are represented here, only those that could be quantified for the North Central Texas region. Therefore, the project may have additional environmental costs.

 <p>WATER QUALITY IMPACT Learn More ⓘ <input type="checkbox"/> Make Priority</p>	 <p>ALTERED HYDROLOGY Learn More ⓘ <input type="checkbox"/> Make Priority</p>	 <p>AQUATIC HABITAT Learn More ⓘ <input type="checkbox"/> Make Priority</p>	 <p>STREAMBANK EROSION Learn More ⓘ <input type="checkbox"/> Make Priority</p>
 <p>HEAT ISLAND EFFECT Learn More ⓘ <input type="checkbox"/> Make Priority</p>	 <p>TERRESTRIAL HABITAT Learn More ⓘ <input checked="" type="checkbox"/> Make Priority</p>	 <p>VEGETATION REMOVAL Learn More ⓘ <input type="checkbox"/> Make Priority</p>	

Identify Potential Stewardship Options

5. Stewardship Options for Your Project



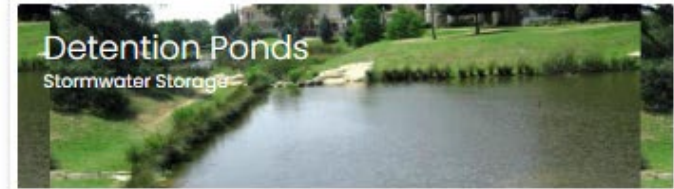
Bioswales
Bioretention

Water Quality/Quantity of Runoff, Flood Regulation, Biodiversity, Aesthetic Value



**Riparian Plantings/
Wetland Restoration**

Water Quality/Quantity of Runoff, Flood Regulation, Biodiversity, Aesthetic Value, Recreation, Air Quality



Detention Ponds
Stormwater Storage

Water Quality/Quantity of Runoff, Flood Regulation, Biodiversity, Aesthetic Value, Recreation



Native Tree Plantings
A Tree for a Tree

Water Quality/Quantity of Runoff, Flood Regulation, Biodiversity, Aesthetic Value, Recreation, Air Quality



Wildlife Corridor
Preservation Measures

Biodiversity, Aesthetic Value



Dark Skies
Reduction of Artificial Light

Aesthetic Value, Recreation, Biodiversity



Explore Costs and Benefits of Stewardship Options

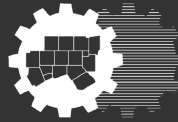
6. Stewardship Option Details



Detention Ponds

Detention ponds capture and store stormwater in a pond year-round, or during/after a storm event. The stormwater is then released at a controlled rate and location. Depending on the type of pond, stormwater pollutants may be filtered, settled, infiltrated, or otherwise reduced before it is released.





North Central Texas
Council of Governments

16 County Watershed Management Initiative

Legislation Enabling Counties to Manage Floodplain Development

- The State specifically addresses the NFIP in the Texas Water Code
- To be eligible to participate the political subdivision must be able to qualify under the requirement of 44 CFR, Subchapter B – Insurance and Hazard Mitigation criteria.

§ 16.3145. NATIONAL FLOOD INSURANCE PROGRAM ORDERS OR ORDINANCES.

The **governing body of each city and county** shall adopt ordinances or orders, as appropriate, necessary for the city or county to be **eligible** to participate in the National Flood Insurance Program.

44 CFR 59.2 (b) **To qualify** for the sale of federally-subsidized flood insurance a community must adopt and submit to the Federal Insurance Administrator. as part of its application, flood plain management regulations, satisfying at a minimum the criteria set forth at part 60 of this subchapter, designed to reduce or avoid future flood, mudslide (i.e., mudflow) or flood-related erosion damages. **These regulations must include effective enforcement provisions.**

Legislation Enabling Counties to Manage Floodplain Development

- The Texas Water Code defines political subdivision to include Counties

Sec. 16.313. DEFINITIONS. In this subchapter:

(1) **"Political subdivision" means any political subdivision or body politic and corporate of the State of Texas and includes any county,** river authority, conservation and reclamation district, water control and improvement district, water improvement district, water control and preservation district, fresh water supply district, irrigation district, and any type of district heretofore or hereafter created or organized or authorized to be created or organized pursuant to the provisions of Article XVI, Section 59 or Article III, Section 52 of the Constitution of the State of Texas; "political subdivision" also means any interstate compact commission to which the State of Texas is a party, municipal corporation, or city whether operating under the Home Rule Amendment of the Constitution or under the General Law.

Legislation Enabling Counties to Manage Floodplain Development

§ 16.315. Political Subdivisions; Compliance With Federal Requirements.

Political subdivisions are authorized to take necessary actions to comply with the requirements of the NFIP, including but not limited to:

- Engaging in floodplain management
- Adopting and enforcing permanent land use and control measures
- Declaring property to be in violation of local laws, regulations, or ordinances
- Taking steps, using regional, watershed, and multi-objective approaches, to improve management and use of flood-prone areas
- Adopting more comprehensive floodplain management rules

Post Workshop Survey Questions

Questions?

Staff Contacts

Trinity River COMMON VISION Program

- Jai-W Hayes-Jackson – Environment & Development Planner
jhayes-jackson@nctcog.org
(817) 695-9212
- Kate Zielke – Environment & Development Program Supervisor
KZielke@nctcog.org
(817) 695-9227

Regional Public Works Program

- Erin Blackman – Environment & Development Planner
Eblackman@nctcog.org
817-608-2360
- Kate Zielke – Environment & Development Program Supervisor
KZielke@nctcog.org
(817) 695-9227

Integrated Stormwater Management Program

- Casey Cannon – Environment & Development Planner
CCannon@nctcog.org
(817) 608-2323

Water Quality Management Program

- Elena Berg – Environment & Development Planner
eberg@nctcog.org
817-608-2363
- Cassidy Campbell – Environment & Development Program Manager
ccampbell@nctcog.org
817-608-2368

Regional Stormwater Management Program

- Crysta Guzman – Environment & Development Planner
CGuzman@nctcog.org
(817) 695-9107
- Casey Cannon – Environment & Development Planner
CCannon@nctcog.org
(817) 608-2323
- Carolyn Horner – Senior Environment & Development Planner
CHorner@nctcog.org
(817) 695-9217

Stormwater Program Resources

Educator Toolbox

- <https://nctcog.org/envir/watershed-management/stormwater/educator-toolbox>

BMP Library

- <https://nctcog.org/envir/watershed-management/stormwater/bmp-library>

YouTube Trainings

- <https://www.youtube.com/user/nctcoged>

Floodplain Management Resources

Trinity River COMMON VISION Program

- <https://nctcog.org/envir/watershed-management/trinity-river-common-vision>

Flood Management Task Force

- <https://nctcog.org/envir/committees/trinity-river-common-vision-steering-committee/flood-management-task-force>

Corridor Development Certificate

- <http://trinityrivercdc.com/>

CRS Users Group

- <https://nctcog.org/envir/watershed-management/crs-user-group>

Water Quality Resources

Water Resources Website

- <https://nctcog.org/envir/natural-resources/water-resources>

Water Resources Council

- <https://nctcog.org/envir/committees/water-resources-council>

Webinars

- <https://www.youtube.com/@NCTCOGED/videos>

North Central Texas Watershed Stakeholders

- The North Central Texas Watershed Stakeholders group meets annually to discuss water quality planning in the region and to exchange information about watershed management.

Thank You!

Presentation can be found at <https://nctcog.org/tsi> under the drop-down Workshops tab.