



# SPATIAL DATA COOPERATIVE PROGRAM AND MORE

Shelley Broyles - RIS Program Manager  
NCTCOG +

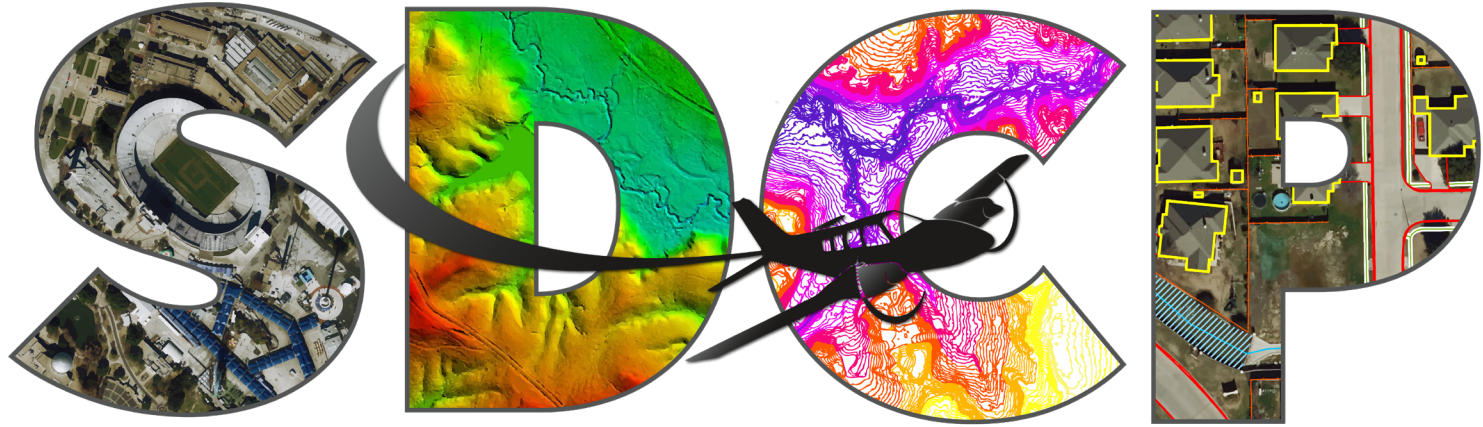




# AGENDA



- Welcome & Introductions
- Brief overview of the Spatial Data Cooperative Program
- Upcoming Projects
- Results of Strategic Analysis
- NCTCOG TRANSPORTATION GIS  
– James McLane
- SCAUG – Garri Grossi



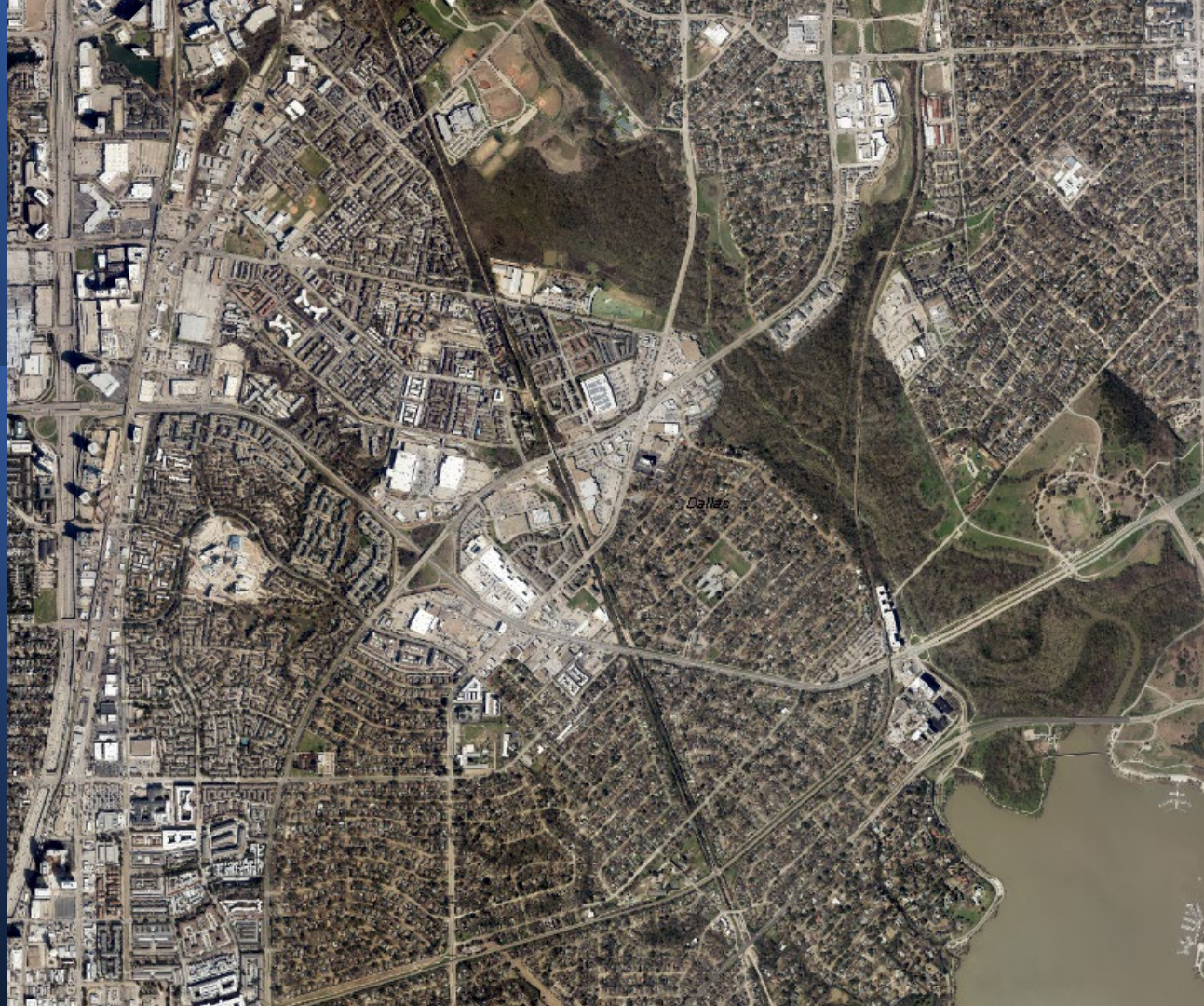
**SPATIAL DATA COOPERATIVE PROGRAM**





# Remote Sensing Data

LiDAR &  
Orthophotography





# Derivative Products

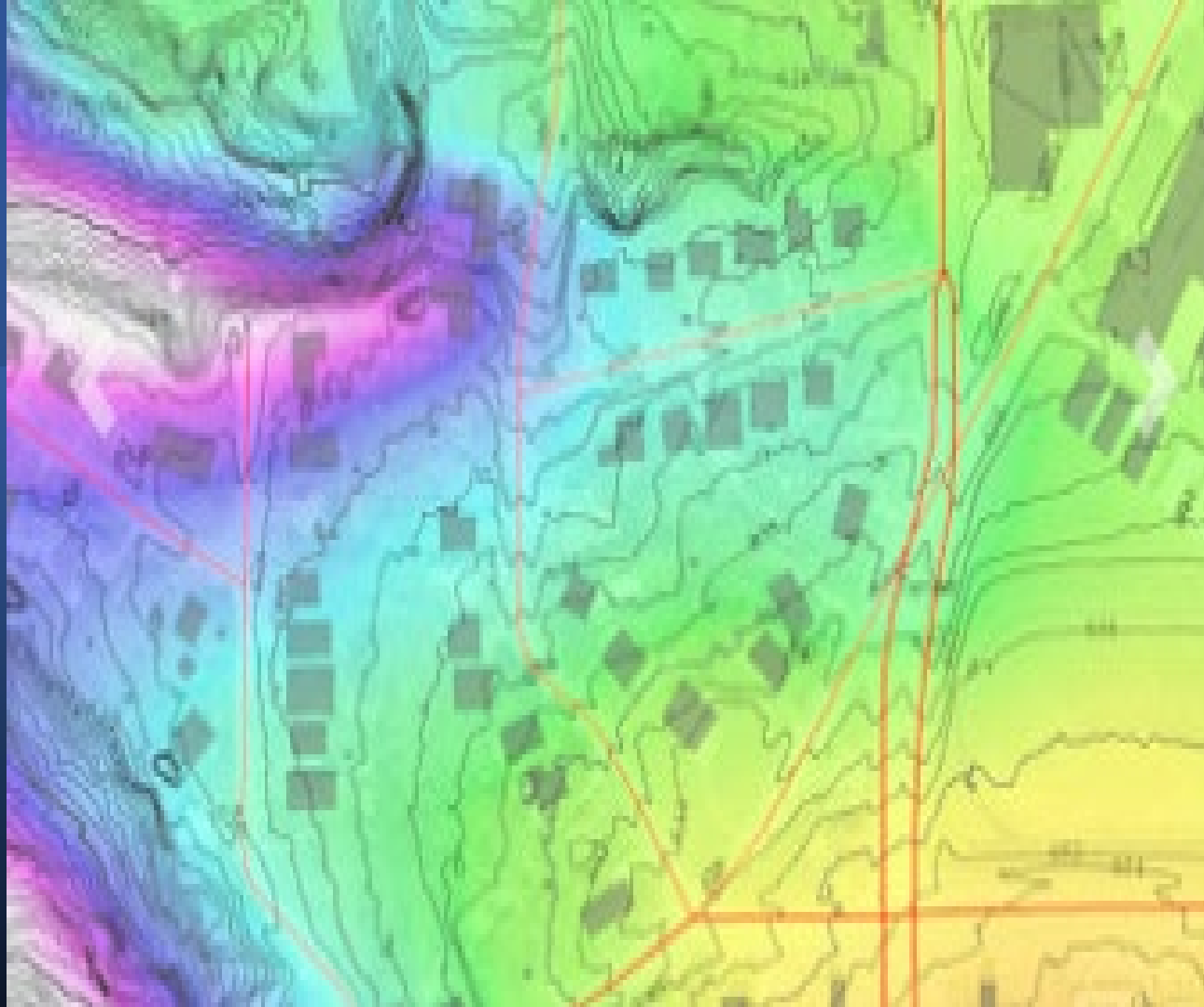
Contours

2D Planimetrics

Impervious Surface

Landcover/Landuse

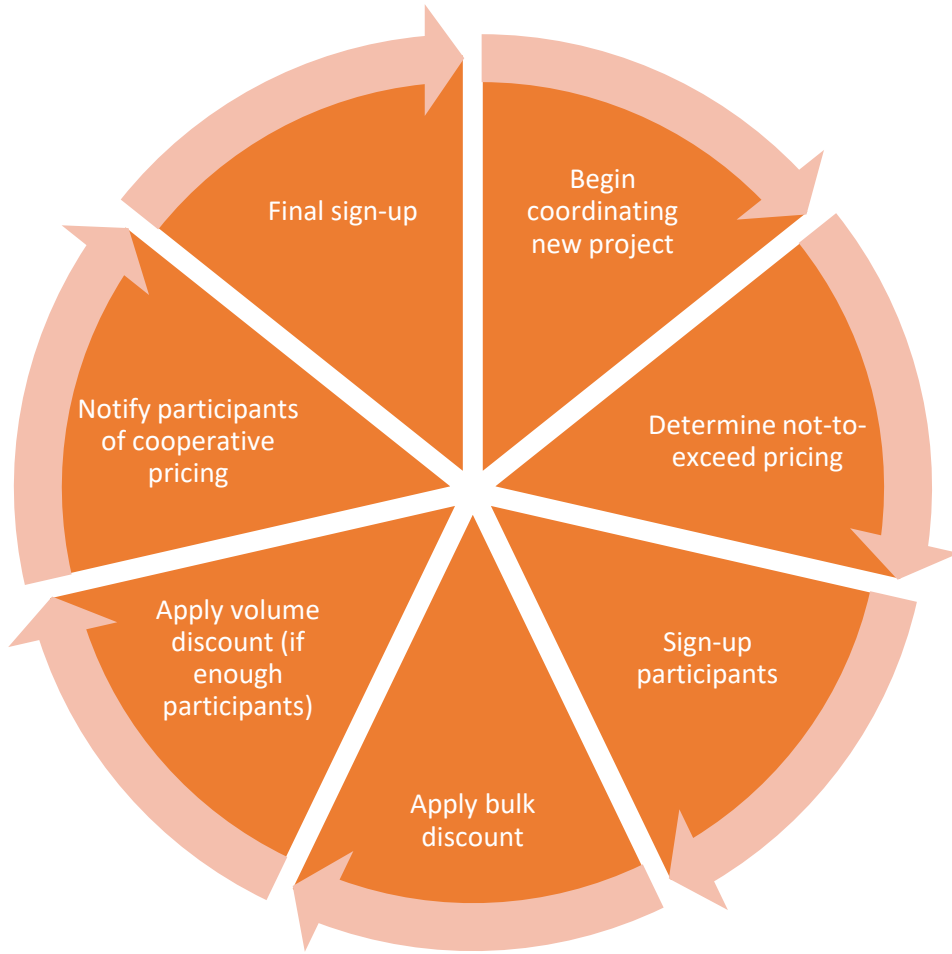
3D Planimetrics





# Current Vendors





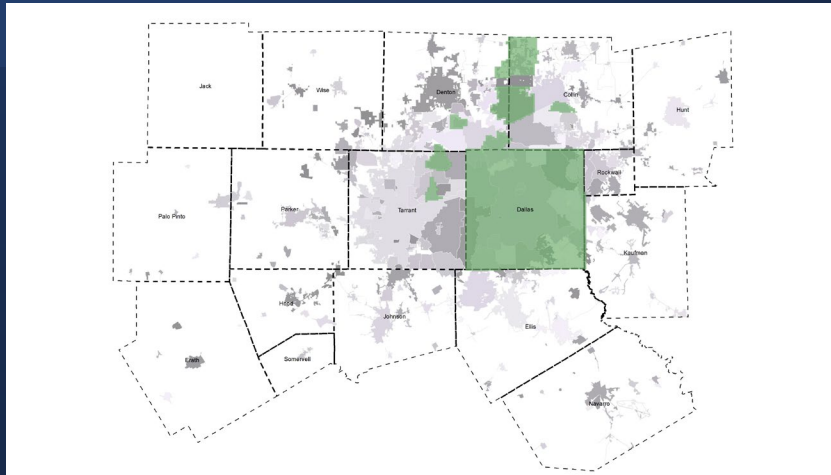
# The Annual Cooperative Project Cycle

(We are at the end of the 2024 cycle – projects will begin in the next couple of weeks. The 2025 cooperative cycle will begin early next year!)

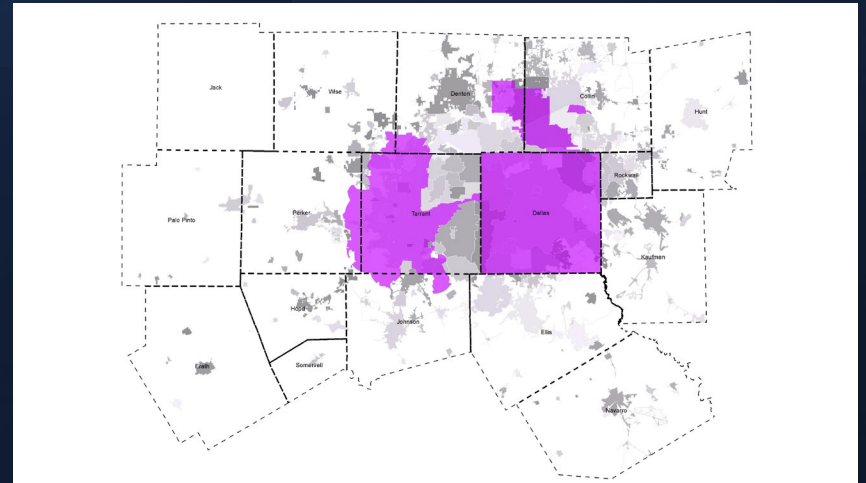


# 2024 Projects

3-inch Orthophotography



0.5M LiDAR







# Relevant SDCP & GIS Sites



SDCP Main Program Page -  
<https://www.nctcog.org/regional-data/spatial-data-cooperative-program-sdcp>

Regional Data Center - <https://data-nctcoggis.opendata.arcgis.com/>

DFWMaps Marketplace -  
<https://purchase.dfwmaps.com/>

# STRATEGIC ANALYSIS

In recent years there has been a small but steady decline in participation. To understand why the RIS Department recently performed a strategic analysis.

This included determining the program's mission, vision, and core values; a macro analysis of the business environment; a market analysis of customer needs; an internal analysis of the agency and program; and a SWOT analysis to combine and fine tune the results. This information will be used to develop an action plan for strengthening and improving the Spatial Data Cooperative Program.



# Program Mission

To provide current, high quality remote sensing and derivative data to North Texas at a fraction of the independent cost.

---



# Program Vision



Affordable spatial data that soars above the rest!

---

# Program Values

**Regionalism** - to build consensus and maximize regional unity with spatial datasets that extend beyond traditional boundaries.

**Service** - to identify the most useful and beneficial services and products for our partners and provide them in a courteous and timely manner.

**Innovation** – to provide the latest in remote sensing technologies to help our partners meet both existing and future challenges.





## Ranking Customer Needs

(Based upon  
survey of program  
participants and  
marketplace  
customers)

CUSTOMER NEEDS	IMPORTANCE	PERFORMANCE
High Quality Data	6	5
Faster Turnaround	6	1
Better Marketplace Interface	5	3
Competitive Pricing	5	3
Interlocal Agreement	4	5
Flexible Invoicing	4	6
More frequently Updated Data	6	3
More Detailed Contours	5	1



# SWOT Analysis

## Issues Impacting the Program

Slow turn around of data.

Not enough frequency of data.

Not enough resources or consistency of funding.

## Strengths to Capitalize on

High quality data that can used in wide range of applications and sectors.

Unique regional aspect and strong reputation of NCTCOG.

Cooperative pricing.



# Potential Short and Long- term Action

- Invest in marketing and education
- Increase customer base to other sectors
- Improve ILA contracting and invoicing
- Find ways to speed-up turnaround of data
- Improve the online Marketplace
- Improve cooperative purchase process

# Transportation GIS News

- New GIS and Data Solutions team now fully staffed
- Cleanup tasks for GIS data feeding [RAPTS/RTR](#) applications largely complete
- Updates coming to [Traffic Counts application](#)
- Plans underway to revive a traffic signal crowdsourcing application
- Work ongoing on a new public land dataset combining data from [USGS PAD-US](#) and parcel datasets
- Historical long-range plan digitization
- Investigating deep learning workflows
- Planning underway for Transportation's participation in 2025 SDCP

# Contacts

Shelley Broyles - RIS Program Manager -  
NCTCOG

[sbroyles@nctcog.org](mailto:sbroyles@nctcog.org)

James McLane – Transportation  
Information Systems Manager -  
NCTCOG

[jmclane@nctcog.org](mailto:jmclane@nctcog.org)

Garri Grossi – Senior GIS Analyst – City of  
Carrollton

[garri.grossi@cityofcarrollton.com](mailto:garri.grossi@cityofcarrollton.com)