

Rail Station Fact Sheet – Parker Road Station



North Central Texas
Council of Governments

Station Characteristics¹

Address	2600 Archerwood Street
City	Plano
Agency	Dallas Area Rapid Transit
Rail Line(s)	Red Line, Orange Line
Corridor	North Central (NC)
Year Opened	2002
Park & Ride Spaces	2,020

Ridership¹

2015 Avg. Weekday	3,222
2015 Avg. Saturday	1,504
2015 Avg. Sunday	1,115

2014 On-Board Transit Survey: Access Mode to Station²

Bike	0.9%
Drive Alone	28.0%
Carpool	2.8%
Walk	18.3%
Drop Off	28.4%
Other	0.0%
Transit Transfer	21.6%

Station Area Plans and Studies

Title	Downtown Plano Vision and Strategy Update
Publisher	City of Plano
Year	Updated January 2016
Web Location	http://www.plano.gov/documentcenter/view/2977

Station Area Characteristics (1/2 mile radius)

Demographics³

Total Population	12,141
Population Density (pop/sq. mile)	3,913
Average Median Age	30
Average Median Income	\$48,435.86

Housing³

Total Housing Units	4,631
Housing Density (units/sq. mile)	1,493
Percent Occupied	94%
Percent Owner-Occupied	45%
Percent Renter-Occupied	55%

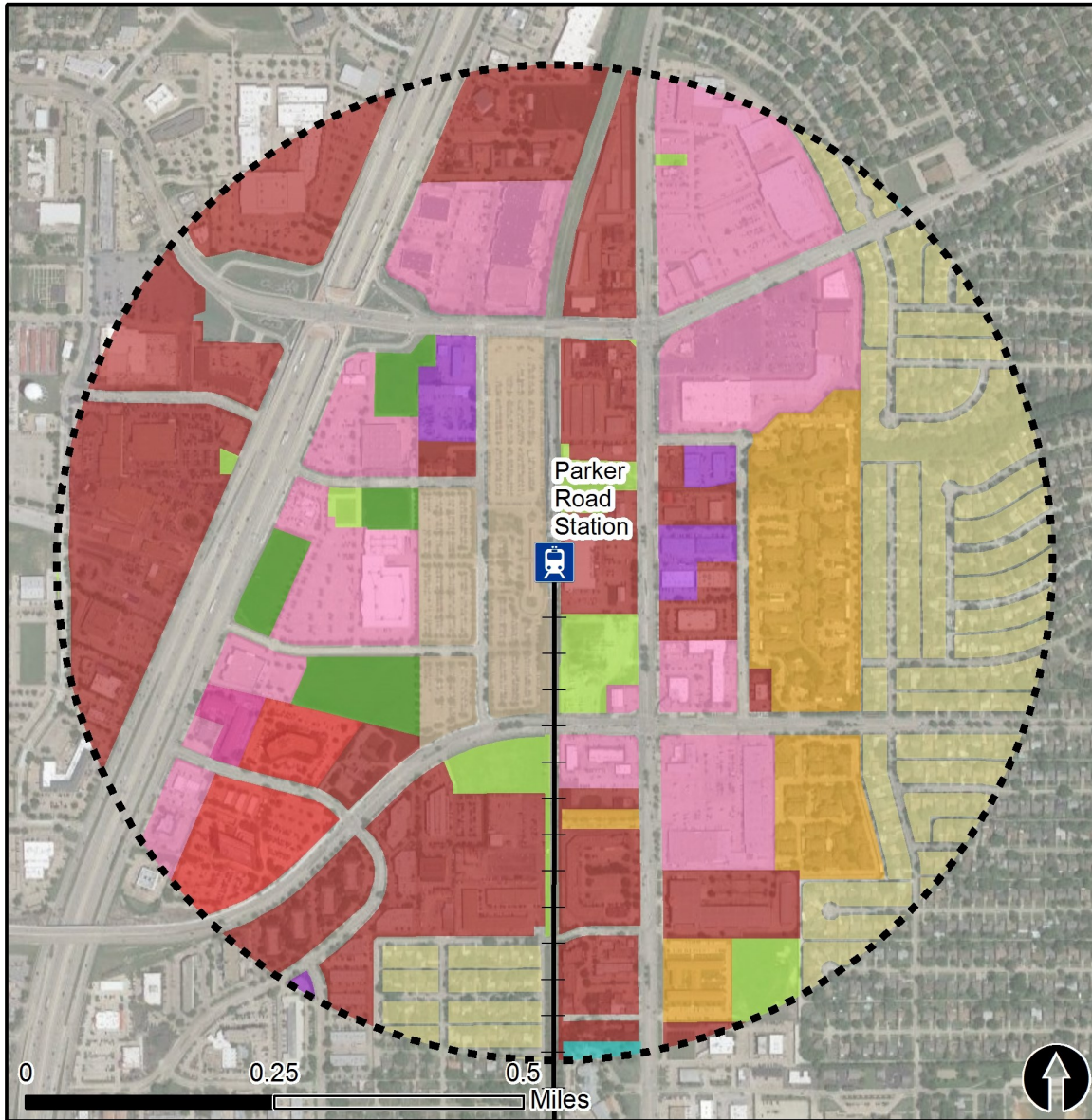
Commute To Work³

Percent Automobile	89.2%
Percent Drive Alone	78.8%
Percent Carpool	10.4%
Percent Transit	2.5%
Percent Bike	0.0%
Percent Walk	1.5%
Percent Other	1.5%
Percent Work from Home	5.2%
Percent Zero-Vehicle Households	7.2%

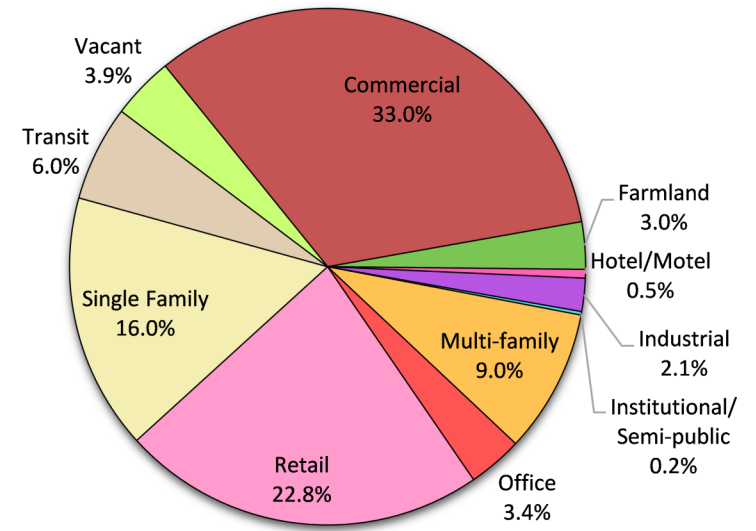
Traffic Survey Zone 2017 Employment Forecast²

Total Jobs	13,626
Job Density (jobs/sq. mile)	5,562

Land Use (2016) – Parker Road Station



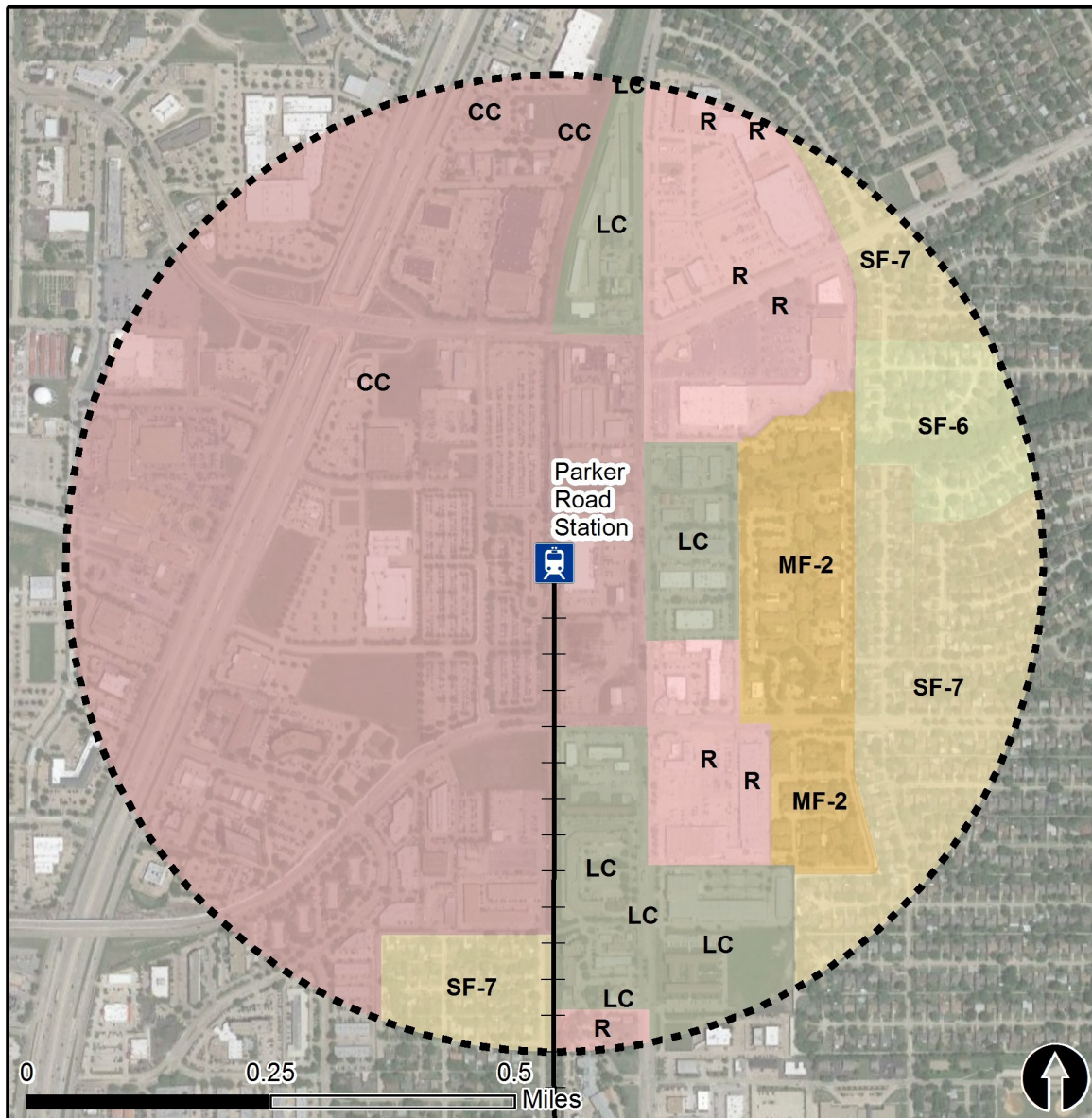
Land Use Percentages



0.5 Mile
Station Buffer

Rail Stations Rail Lines

Zoning (2016) – Parker Road Station



Zoning Districts

CC – Corridor Commercial

LC – Light Commercial

MF-2 – Multifamily

R – Retail

SF-6, SF-7 – Single-Family

For more information on zoning, please visit the City of Plano Planning and Zoning website at:

<http://www.plano.gov/1259/Zoning-Ordinance>



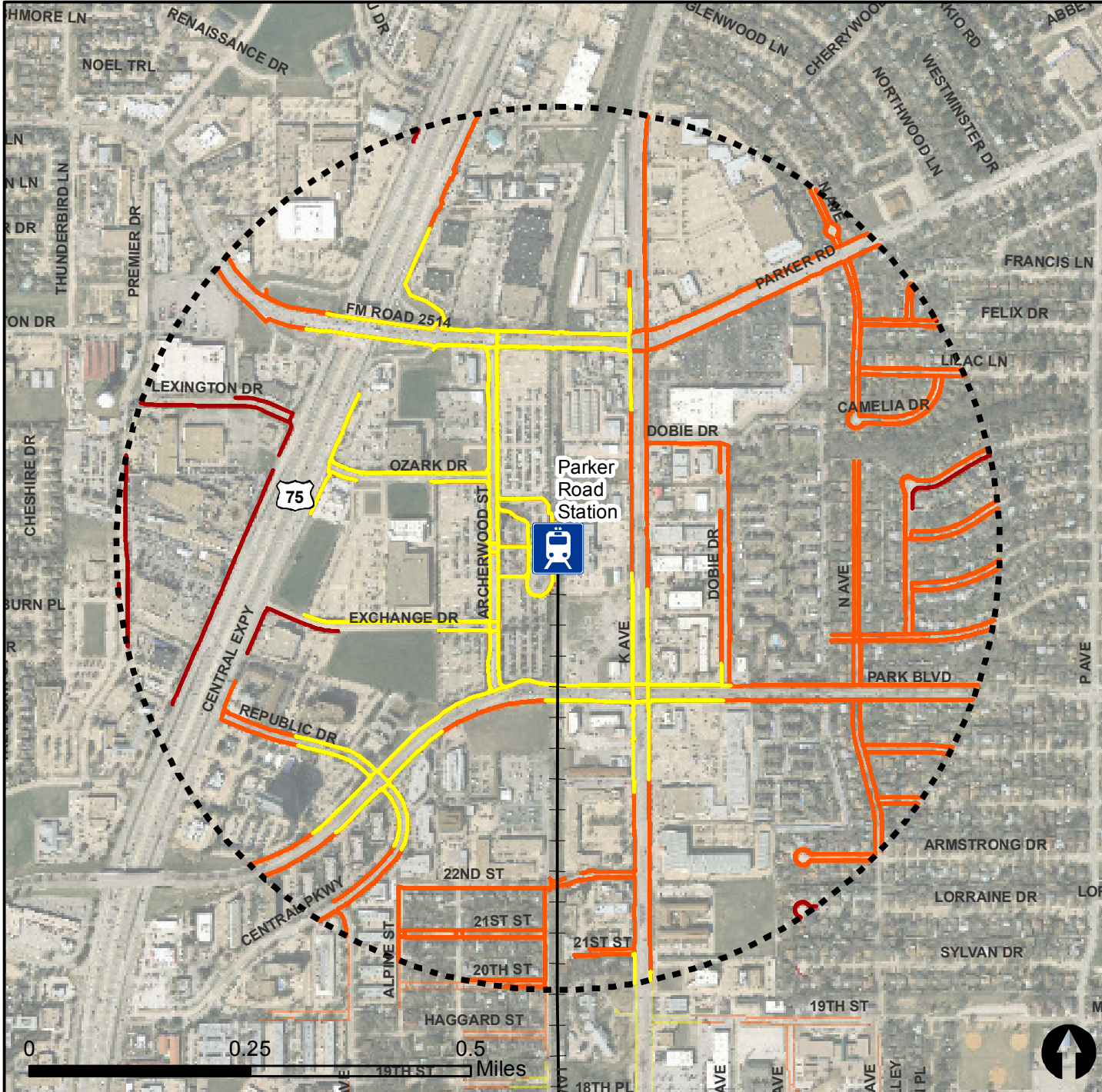
Rail Stations —+— Rail Lines

Pedestrian Routes to Rail - Parker Road Station







Last Updated: February 2015



North Central Texas
Council of Governments

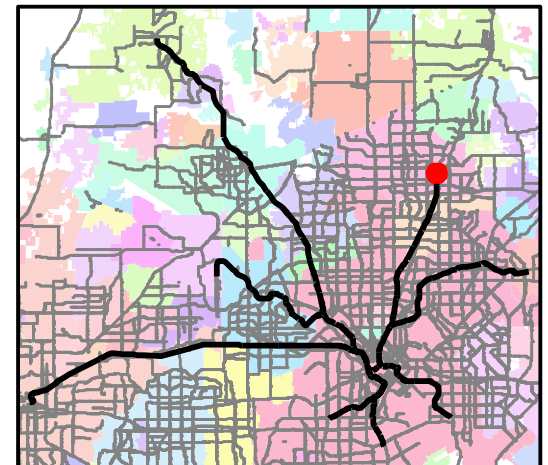


Legend

-  Rail Stations
-  0.5 Mile Station Buffer
-  Railroads
-  Existing sidewalk facilities within a 0.5 mile walk distance
-  Existing sidewalk facilities greater than a 0.5 mile walk distance
-  Existing sidewalk facilities that are disconnected due to a gap in the network

Project Overview

The Pedestrian Routes to Rail study identifies all existing pedestrian facilities within a half-mile radius of existing light rail and commuter rail stations in the Dallas-Fort Worth region based on 2014 data. ArcGIS Network Analyst tool was used to identify continuous facilities that are less than or greater than a half-mile actual walking distance to a station. The maps also reflect existing facilities that are disconnected due to gaps or other barriers not allowing a continuous pedestrian route to a station. The maps do not reflect the condition or ADA compliance of the existing infrastructure. More information on the Routes to Rail study and methodology is available at: nctcog.org/RoutesToRail

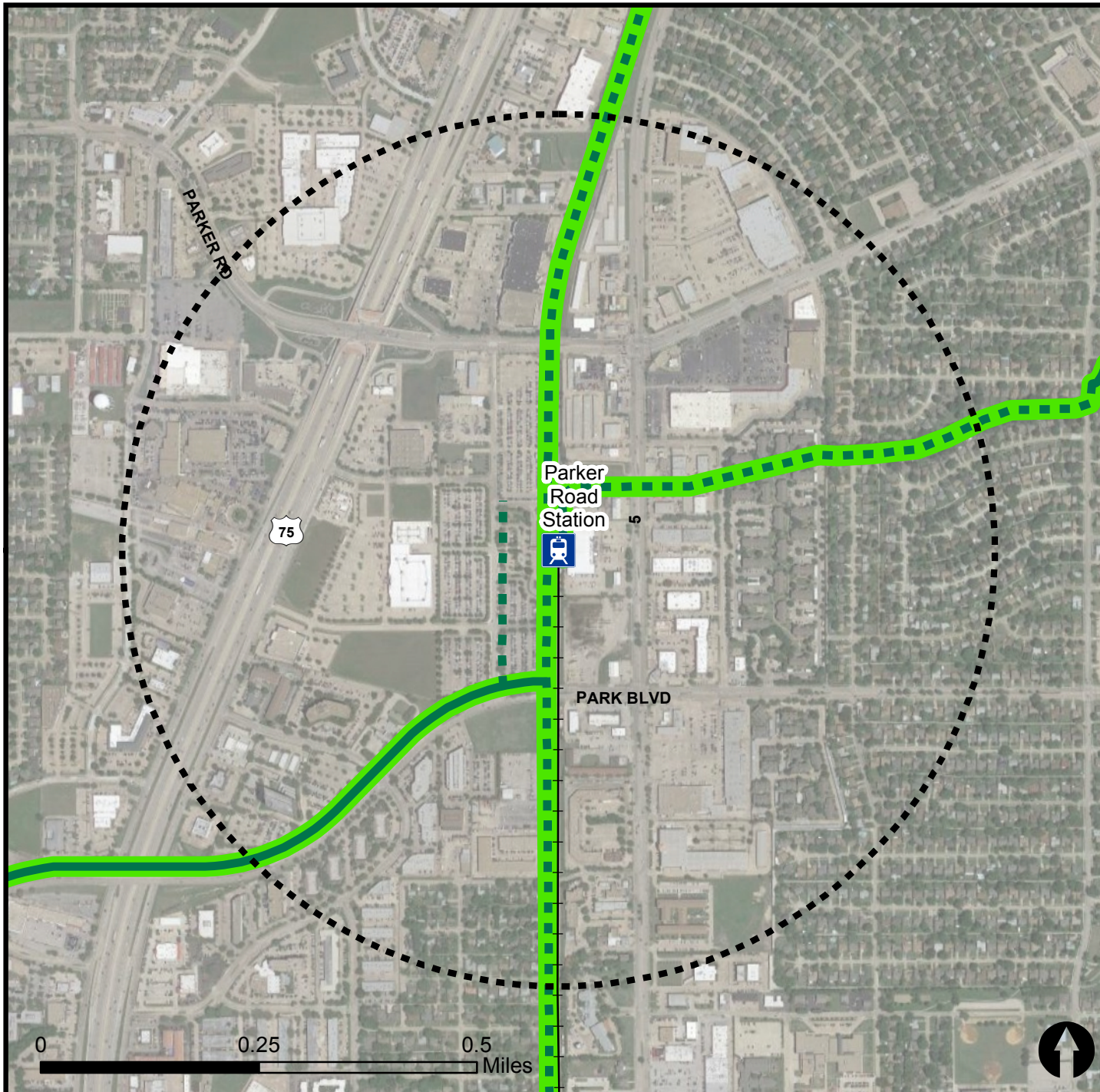


Bicycle Routes to Rail - Parker Road Station

Last Updated: October 2016



North Central Texas
Council of Governments



Legend



Rail Stations



0.5 Mile
Station Buffer



Rail Lines



On-Street Bikeway, Existing



On-Street Bikeway, Planned



2040 Veloweb



Off-Street Path, Existing



Off-Street Path, Planned

Project Overview

The Bicycle Routes to Rail study identifies all existing and planned bikeways in proximity to existing or under-construction light rail and commuter rail stations in the Dallas / Fort Worth region based on 2016 data. The maps reflect off-street paths (trails) and streets designated by local adopted master plans for dedicated bikeways (e.g. bike lanes, cycle tracks) located on the street. In accordance with the Texas Transportation Code, bicyclists have a right to the road. As such, the map does not reflect other roadways around the station that may have signed bike routes or by state law may be used by bicyclists. More information about the Routes to Rail study and methodology is available at:

nctcog.org/RoutesToRail

