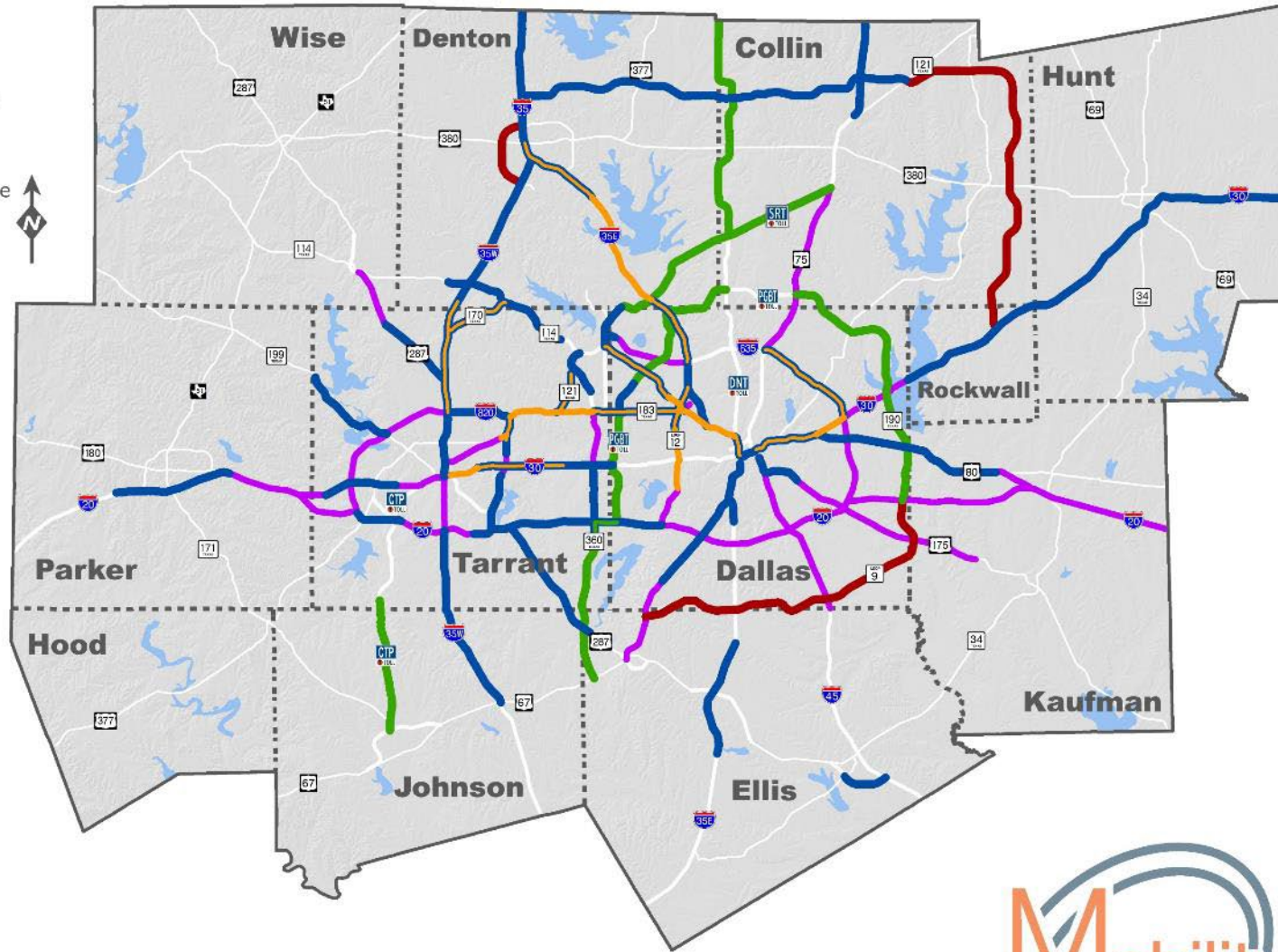


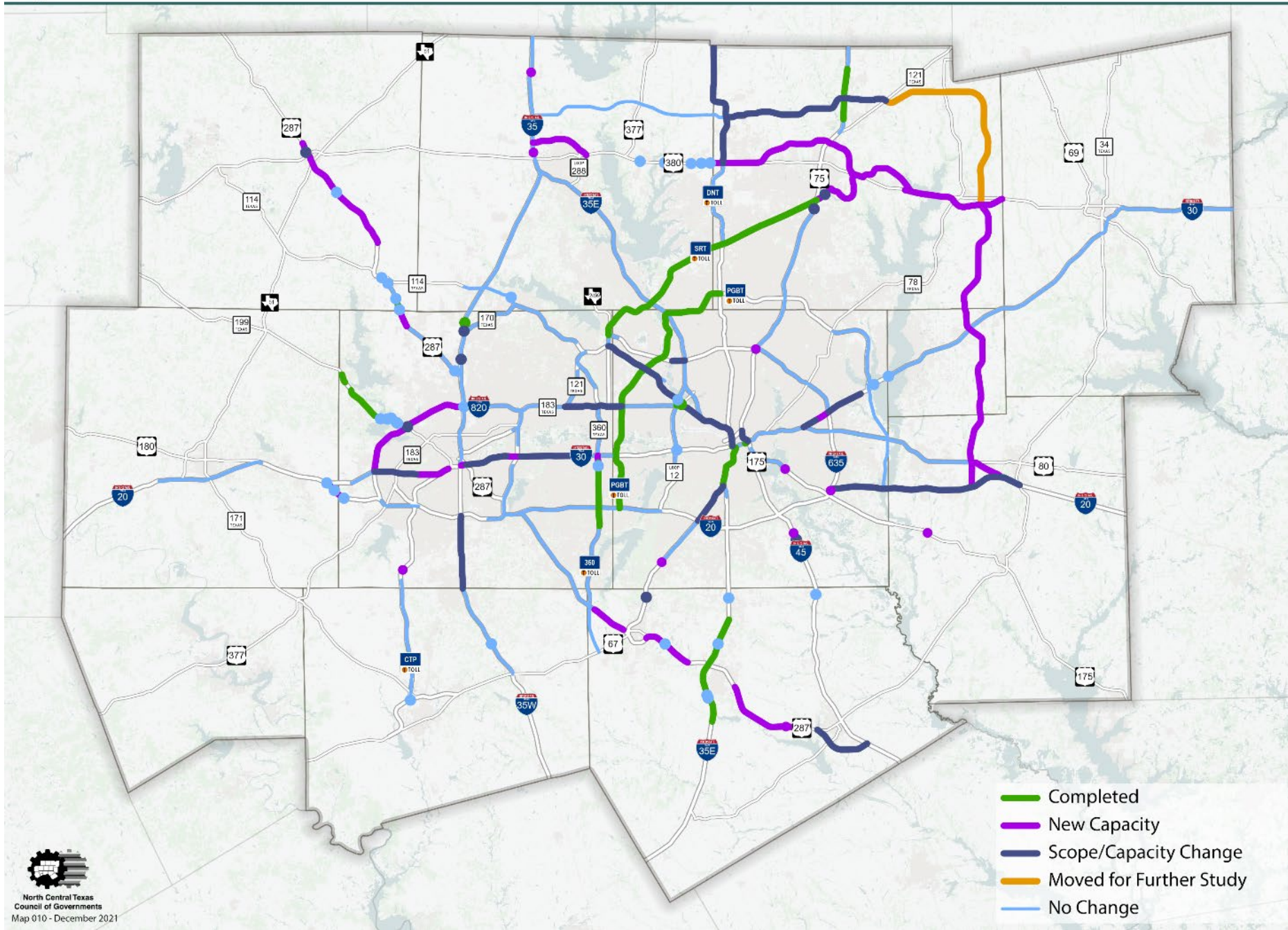
MOBILITY 2045 UPDATE

Surface Transportation Technical
Committee | December 3, 2021

Major Roadway Recommendations

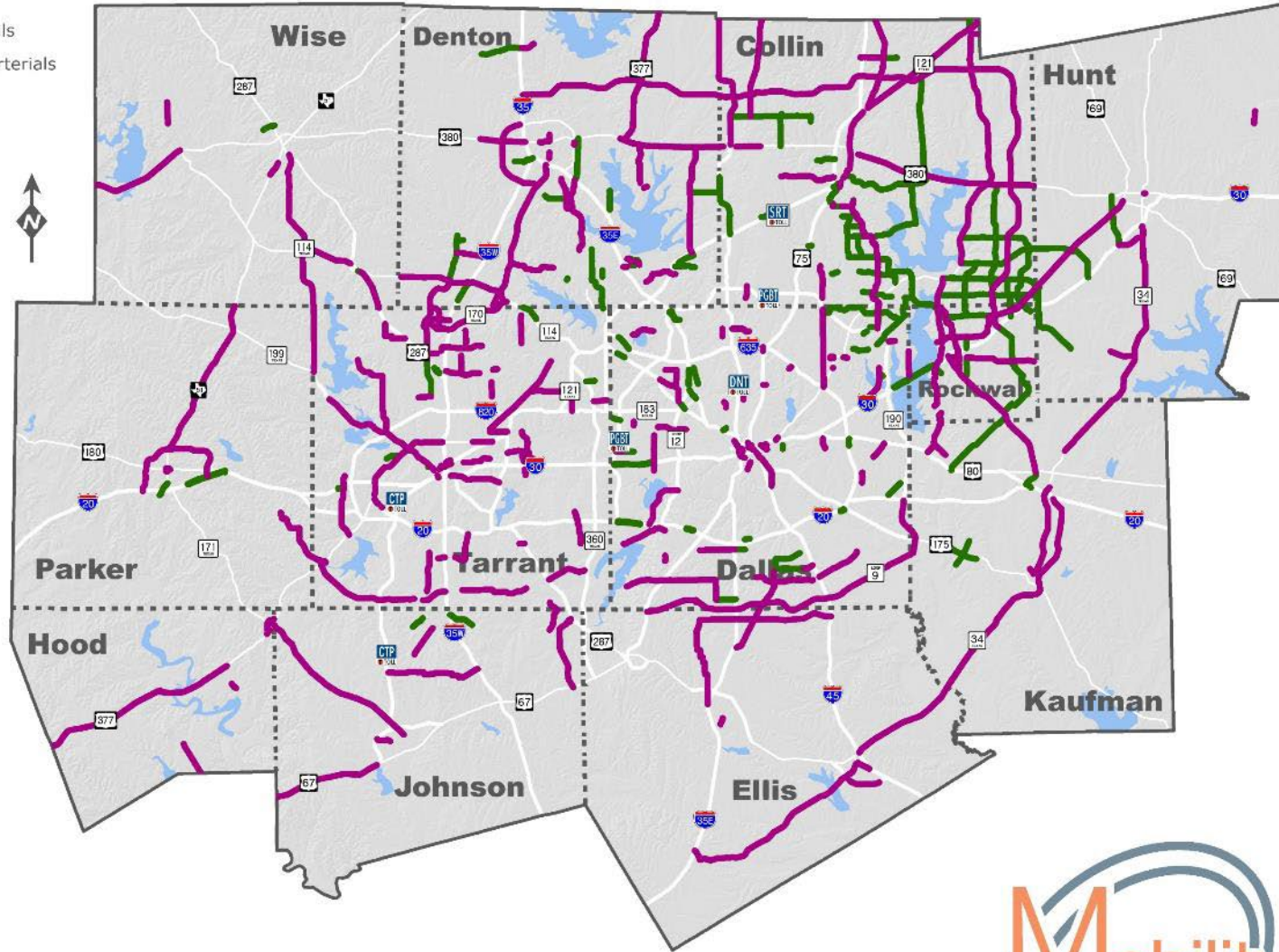
- New or Additional Freeway Capacity
- New or Additional Managed Lane Capacity
- New or Additional Toll Road Capacity
- Staged Facility (Frontage Roads)
- Asset Optimization





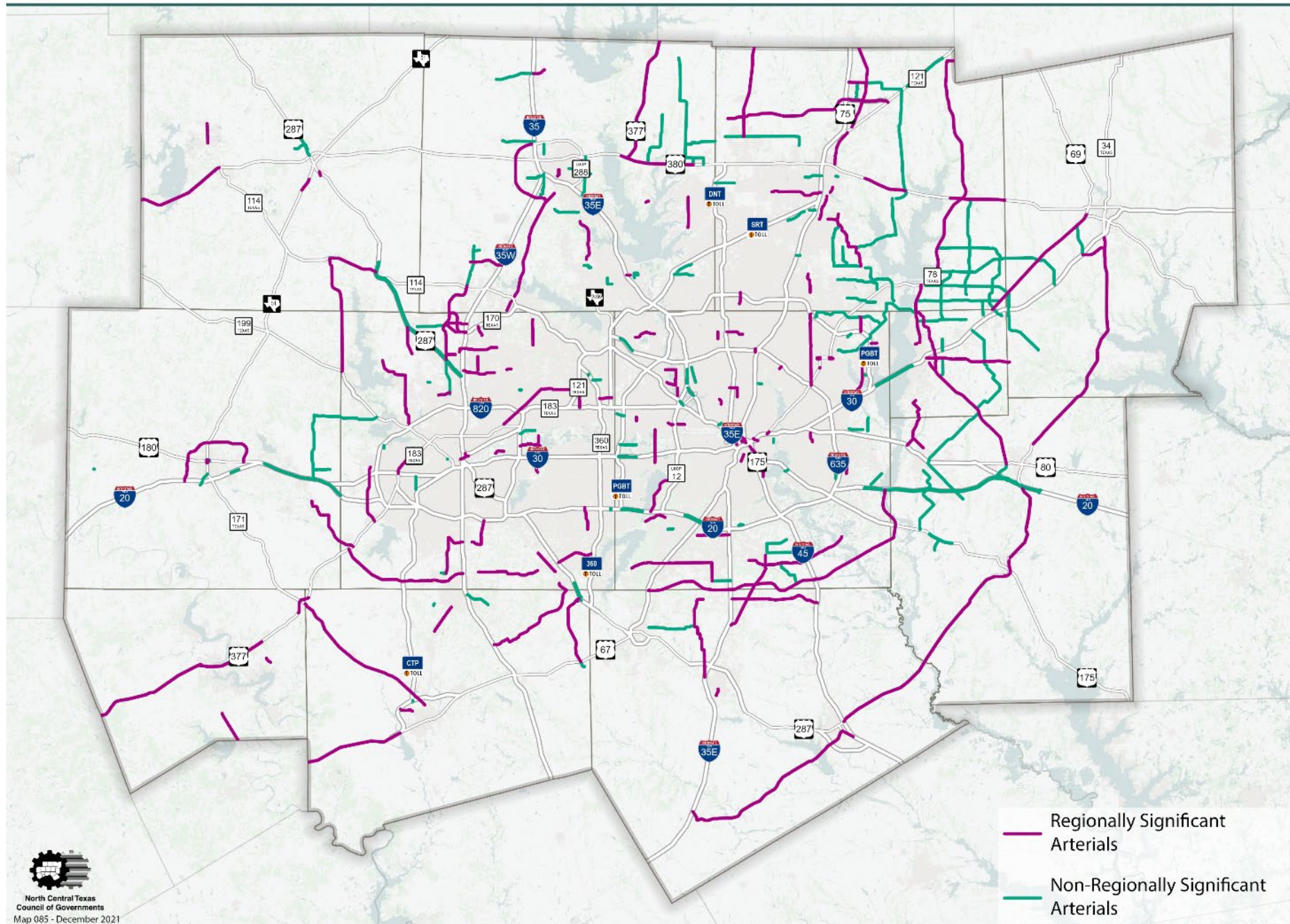
Arterial Capacity Improvements

- Regionally Significant Arterials
- Non-Regionally Significant Arterials



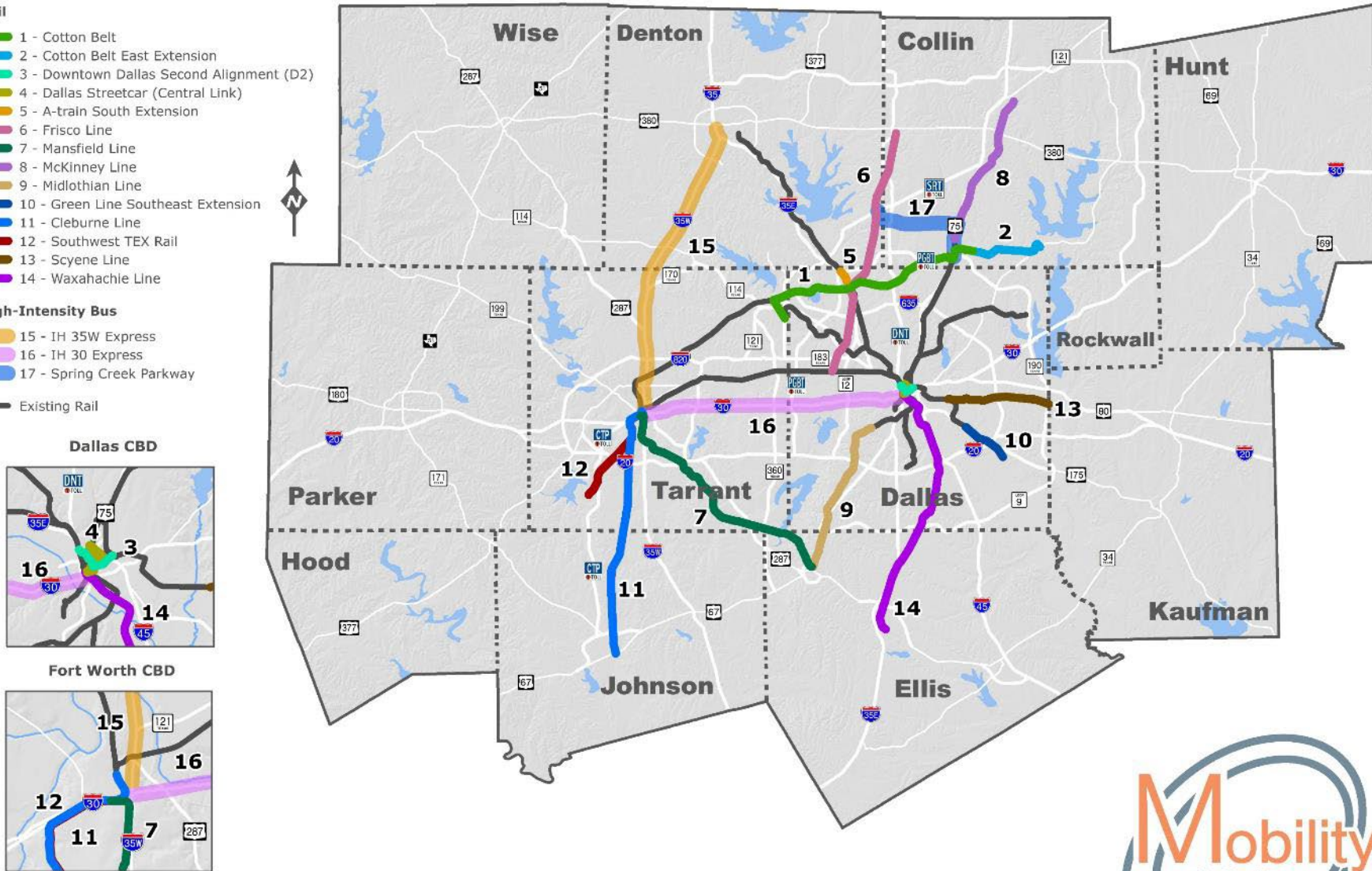
Lines on this map depict arterials with funds for improvement. Facility recommendations indicate transportation need. Corridor-specific alignment, design, and operational characteristics will be determined through ongoing project development.

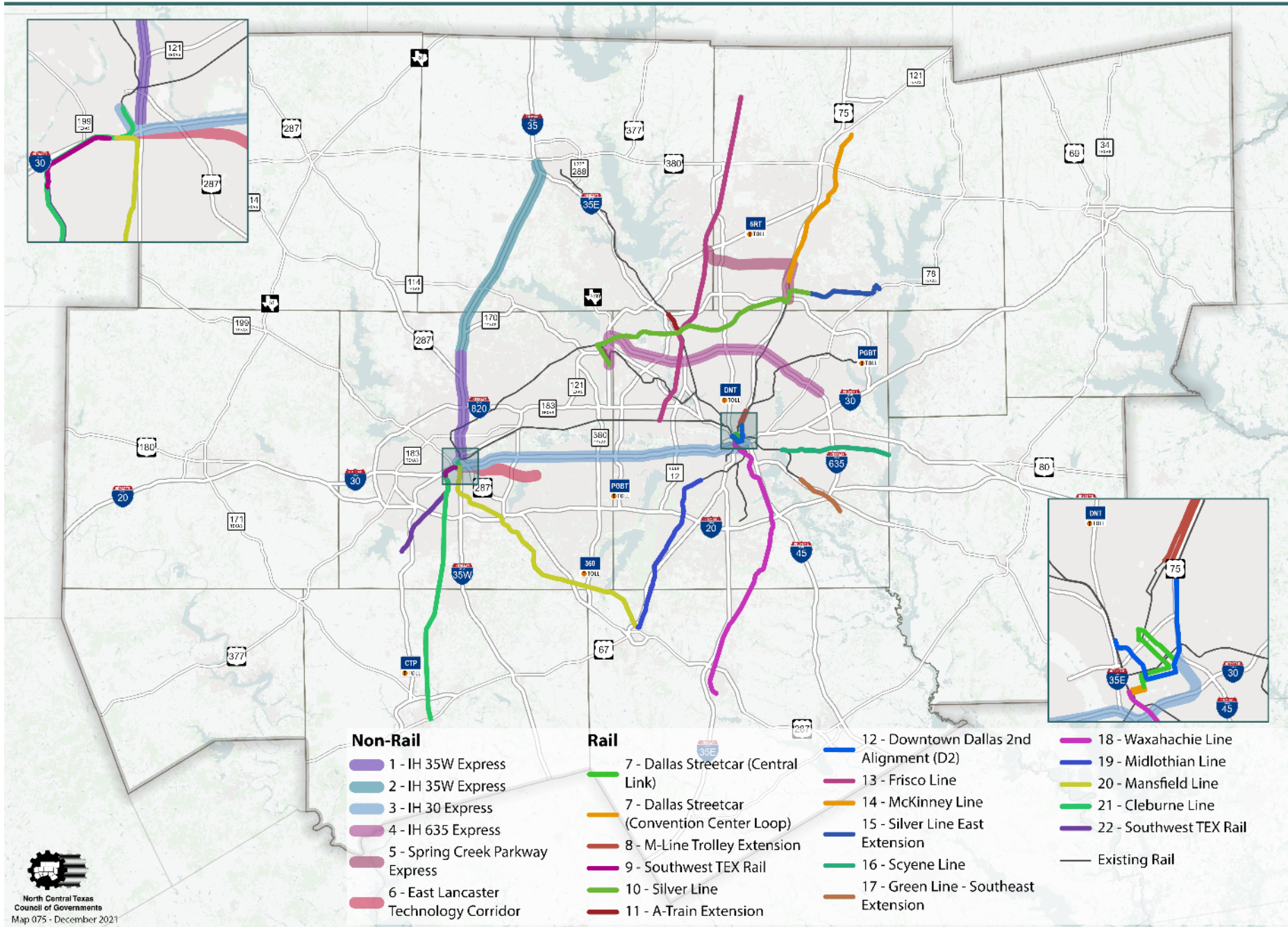




Transit Corridor Projects

- Rail**
- 1 - Cotton Belt
 - 2 - Cotton Belt East Extension
 - 3 - Downtown Dallas Second Alignment (D2)
 - 4 - Dallas Streetcar (Central Link)
 - 5 - A-train South Extension
 - 6 - Frisco Line
 - 7 - Mansfield Line
 - 8 - McKinney Line
 - 9 - Midlothian Line
 - 10 - Green Line Southeast Extension
 - 11 - Cleburne Line
 - 12 - Southwest TEX Rail
 - 13 - Scyene Line
 - 14 - Waxahachie Line
- High-Intensity Bus**
- 15 - IH 35W Express
 - 16 - IH 30 Express
 - 17 - Spring Creek Parkway
- Existing Rail





CONTACT US



nctcog.org/PlanInProgress



mobilityplan@nctcog.org



Amy Johnson

Senior Transportation Planner

ajohnson@nctcog.org

(817) 704-5608

Brendon Wheeler, P.E.

Principal Transportation Planner

bwheeler@nctcog.org

(682) 433-0478