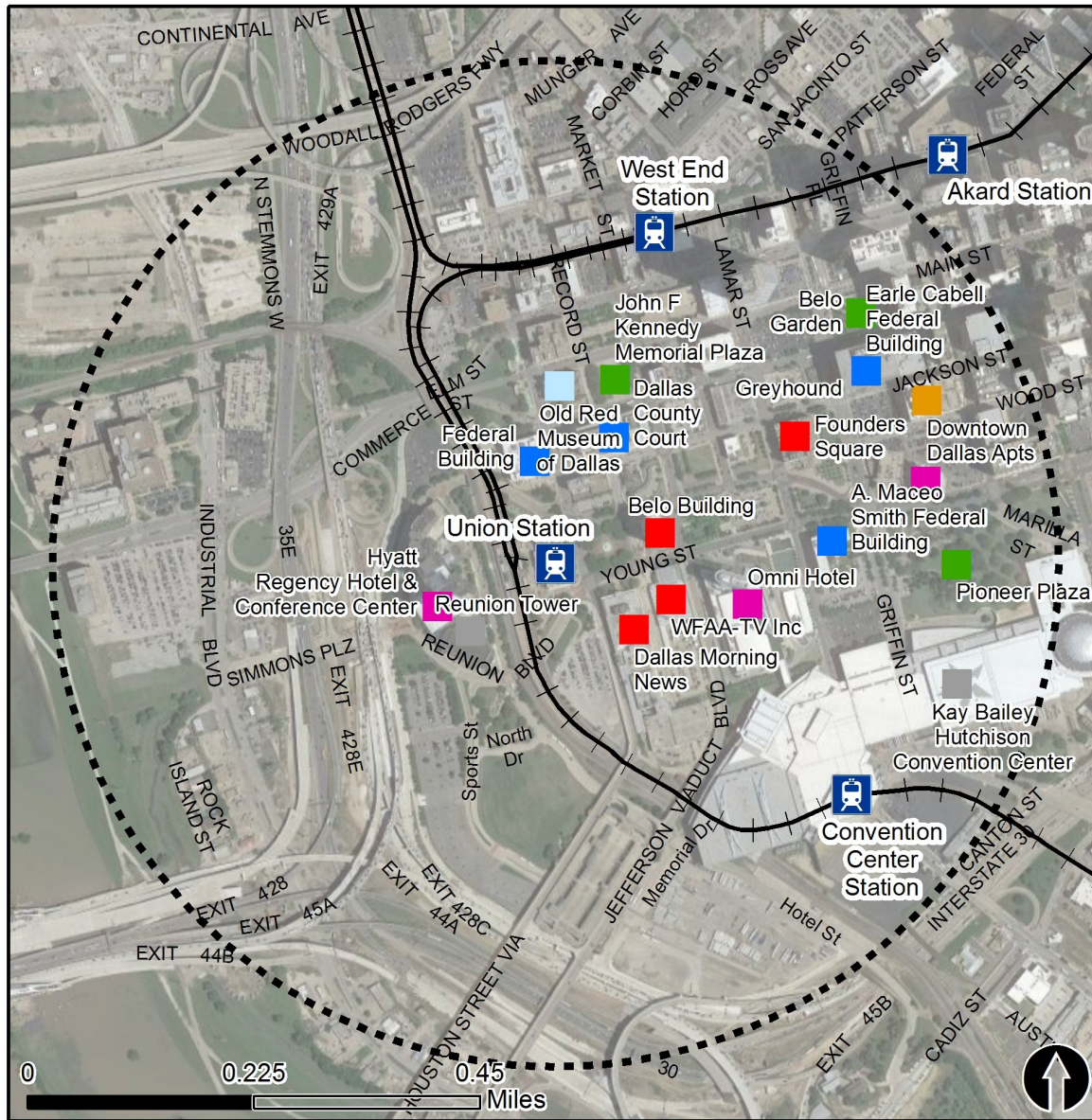


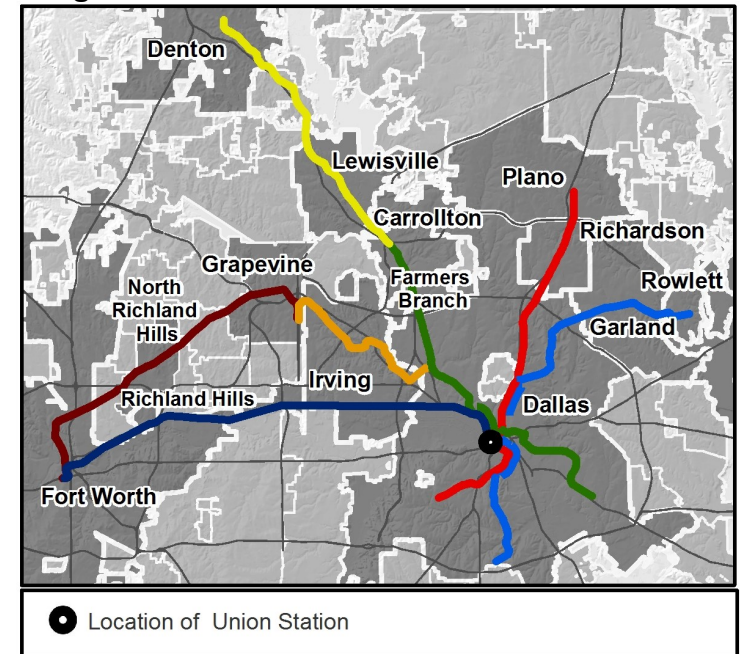
Rail Station Fact Sheet – Union Station



Station Overview

Union Station is located between Reunion Boulevard East and West near Reunion Tower in downtown Dallas. The station opened in 1996 and is served by the DART Rail Red and Blue Lines, and the Trinity Railway Express (TRE) commuter rail.

Regional Rail Transit Lines



0.5 Mile
Station Buffer



Rail Stations



Rail Lines

Key Developments

Cultural

Hotel

Office

Recreation

Government

Multi-Family

Other

Rail Station Fact Sheet – Union Station



North Central Texas
Council of Governments

Station Characteristics¹

Address	400 S. Houston Street
City	Dallas
Agency	Dallas Area Rapid Transit
Rail Line(s)	Red Line, Blue Line, TRE
Corridor	Central Business District
Year Opened	1996
Park & Ride Spaces	0

Ridership¹

2015 Avg. Weekday	2,289
2015 Avg. Saturday	1,477
2015 Avg. Sunday	745

2014 On-Board Transit Survey: Access Mode to Station²

Bike	0.5%
Drive Alone	1.9%
Carpool	0.2%
Walk	40.1%
Drop Off	5.6%
Other	0.0%
Transit Transfer	51.8%

Station Area Plans and Studies

Title	Downtown Dallas 360
Publisher	City of Dallas
Year	2011
Web Location	http://www.downtowndallas360.com/

Station Area Characteristics (1/2 mile radius)

Demographics³

Total Population	16,430
Population Density (pop/sq. mile)	3,178
Average Median Age	31
Average Median Income	\$70,885.00

Housing³

Total Housing Units	5,814
Housing Density (units/sq. mile)	1,125
Percent Occupied	85%
Percent Owner-Occupied	7%
Percent Renter-Occupied	93%

Commute To Work³

Percent Automobile	77.3%
Percent Drive Alone	73.9%
Percent Carpool	3.4%
Percent Transit	7.0%
Percent Bike	0.0%
Percent Walk	9.2%
Percent Other	0.8%
Percent Work from Home	5.7%
Percent Zero-Vehicle Households	4.5%

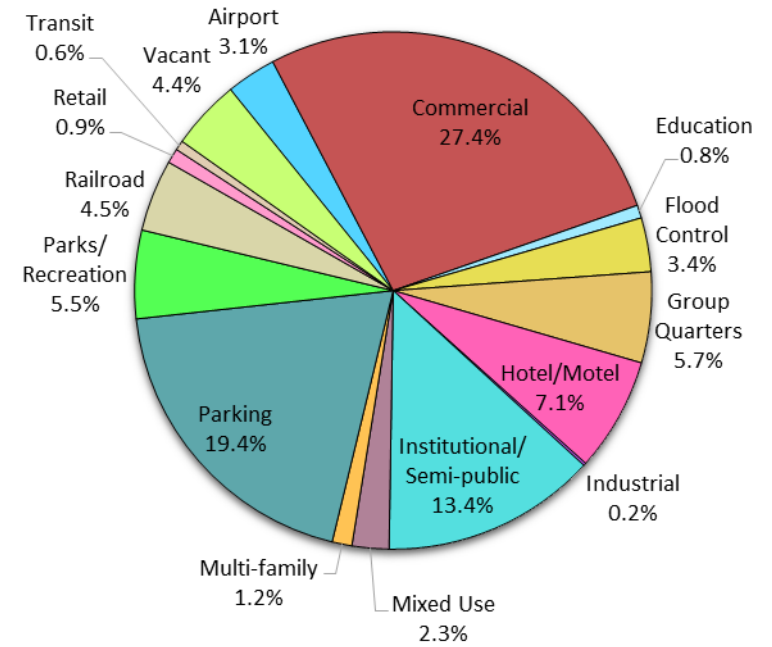
Traffic Survey Zone 2017 Employment Forecast²

Total Jobs	68,641
Job Density (jobs/sq. mile)	46,155

Land Use (2016) – Union Station



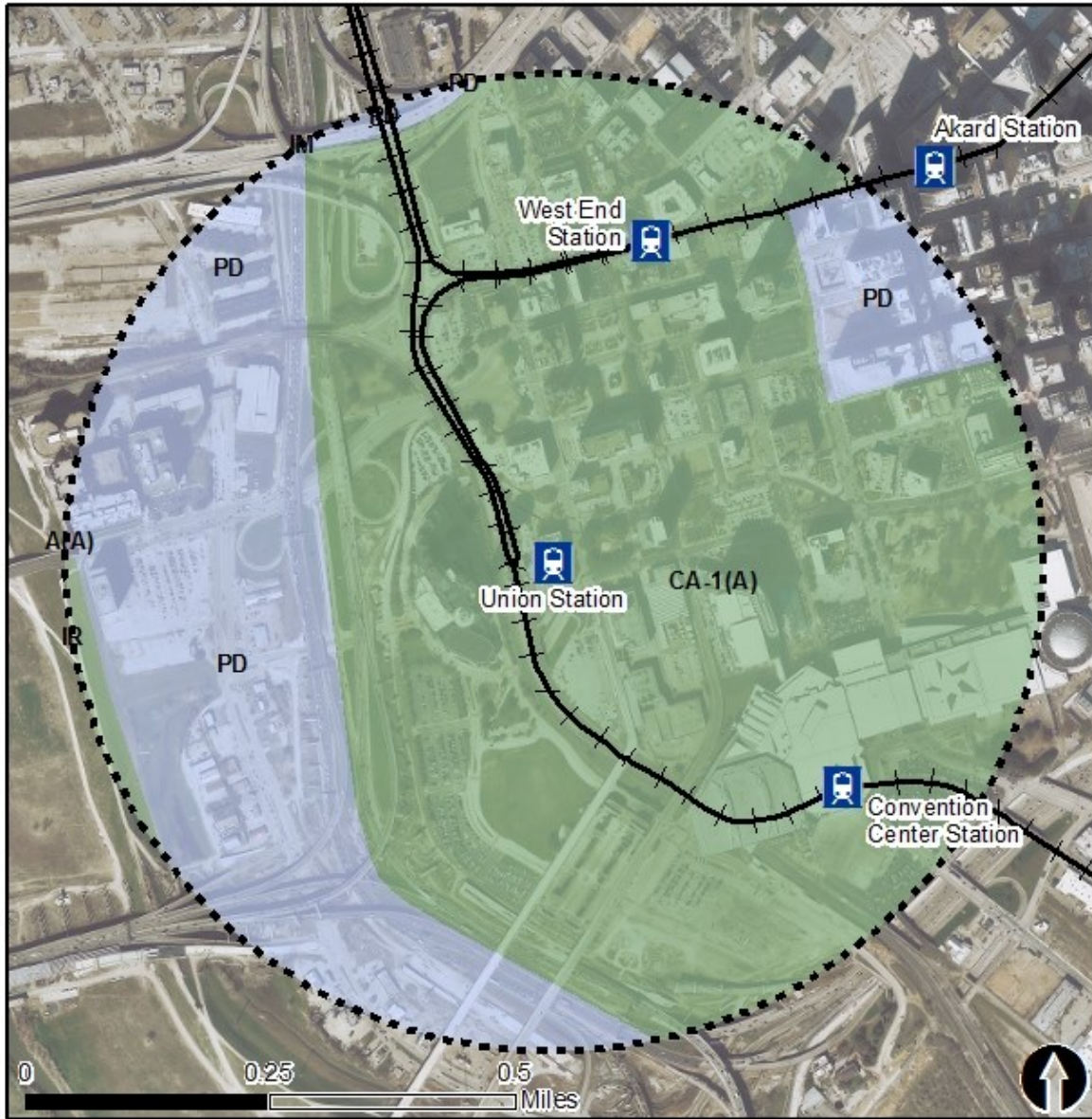
Land Use Percentages



0.5 Mile
Station Buffer

Rail Stations Rail Lines

Zoning (2016) – Union Station



Zoning Districts

- A(A) – Agricultural
- CA-1(A) – Central Area
- IR – Industrial Research
- PD – Planned Development

For more information on zoning, please visit the City of Dallas Zoning website at:

<http://gis.dallascityhall.com/zoningweb/>

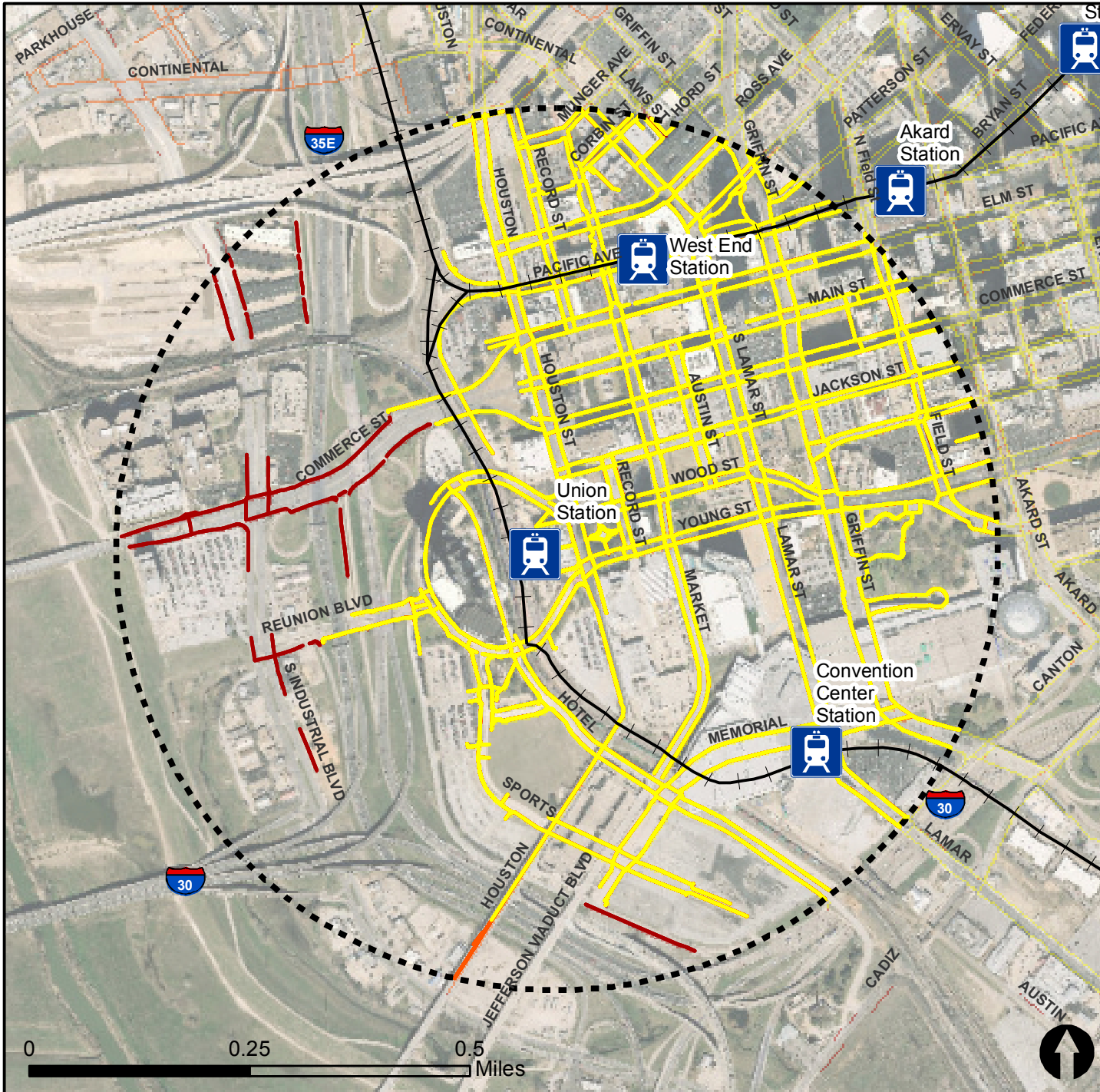


Pedestrian Routes to Rail - Union Station

Last Updated: February 2015



North Central Texas
Council of Governments

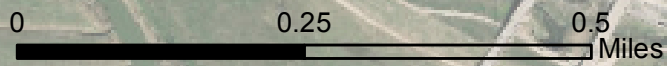
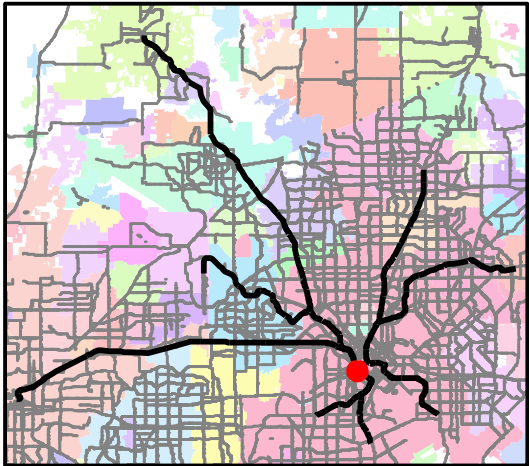


Legend

- Rail Stations
- 0.5 Mile Station Buffer
- Railroads
- Existing sidewalk facilities within a 0.5 mile walk distance
- Existing sidewalk facilities greater than a 0.5 mile walk distance
- Existing sidewalk facilities that are disconnected due to a gap in the network

Project Overview

The Pedestrian Routes to Rail study identifies all existing pedestrian facilities within a half-mile radius of existing light rail and commuter rail stations in the Dallas-Fort Worth region based on 2014 data. ArcGIS Network Analyst tool was used to identify continuous facilities that are less than or greater than a half-mile actual walking distance to a station. The maps also reflect existing facilities that are disconnected due to gaps or other barriers not allowing a continuous pedestrian route to a station. The maps do not reflect the condition or ADA compliance of the existing infrastructure. More information on the Routes to Rail study and methodology is available at: nctcog.org/RoutesToRail

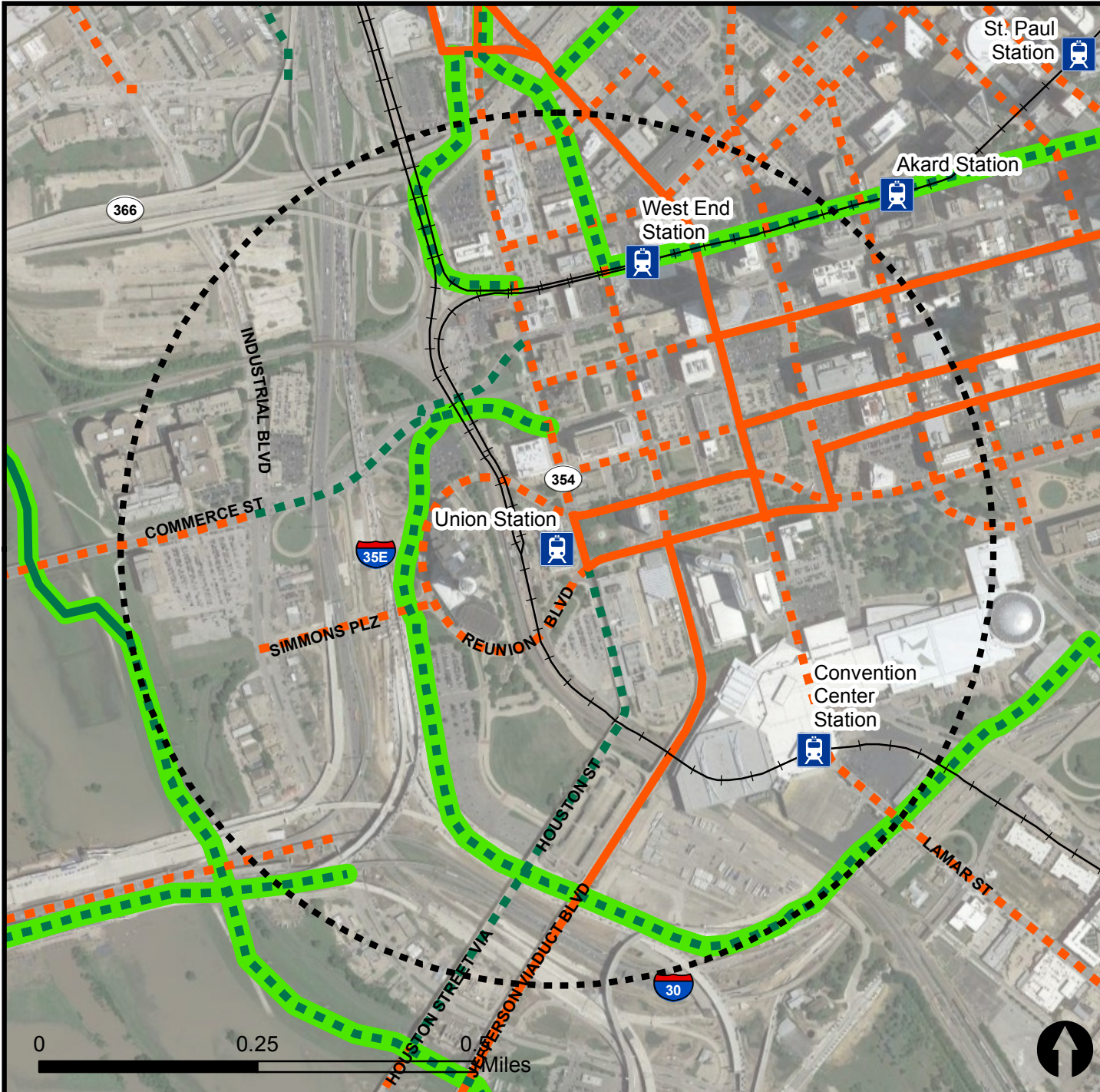


Bicycle Routes to Rail - Union Station

Last Updated: October 2016



North Central Texas
Council of Governments



Legend

- Rail Stations
- 0.5 Mile Station Buffer
- Rail Lines
- On-Street Bikeway, Existing
- On-Street Bikeway, Planned
- 2040 Veloweb
- Off-Street Path, Existing
- Off-Street Path, Planned

Project Overview

The Bicycle Routes to Rail study identifies all existing and planned bikeways in proximity to existing or under-construction light rail and commuter rail stations in the Dallas / Fort Worth region based on 2016 data. The maps reflect off-street paths (trails) and streets designated by local adopted master plans for dedicated bikeways (e.g. bike lanes, cycle tracks) located on the street. In accordance with the Texas Transportation Code, bicyclists have a right to the road. As such, the map does not reflect other roadways around the station that may have signed bike routes or by state law may be used by bicyclists. More information about the Routes to Rail study and methodology is available at: nctcog.org/RoutesToRail

