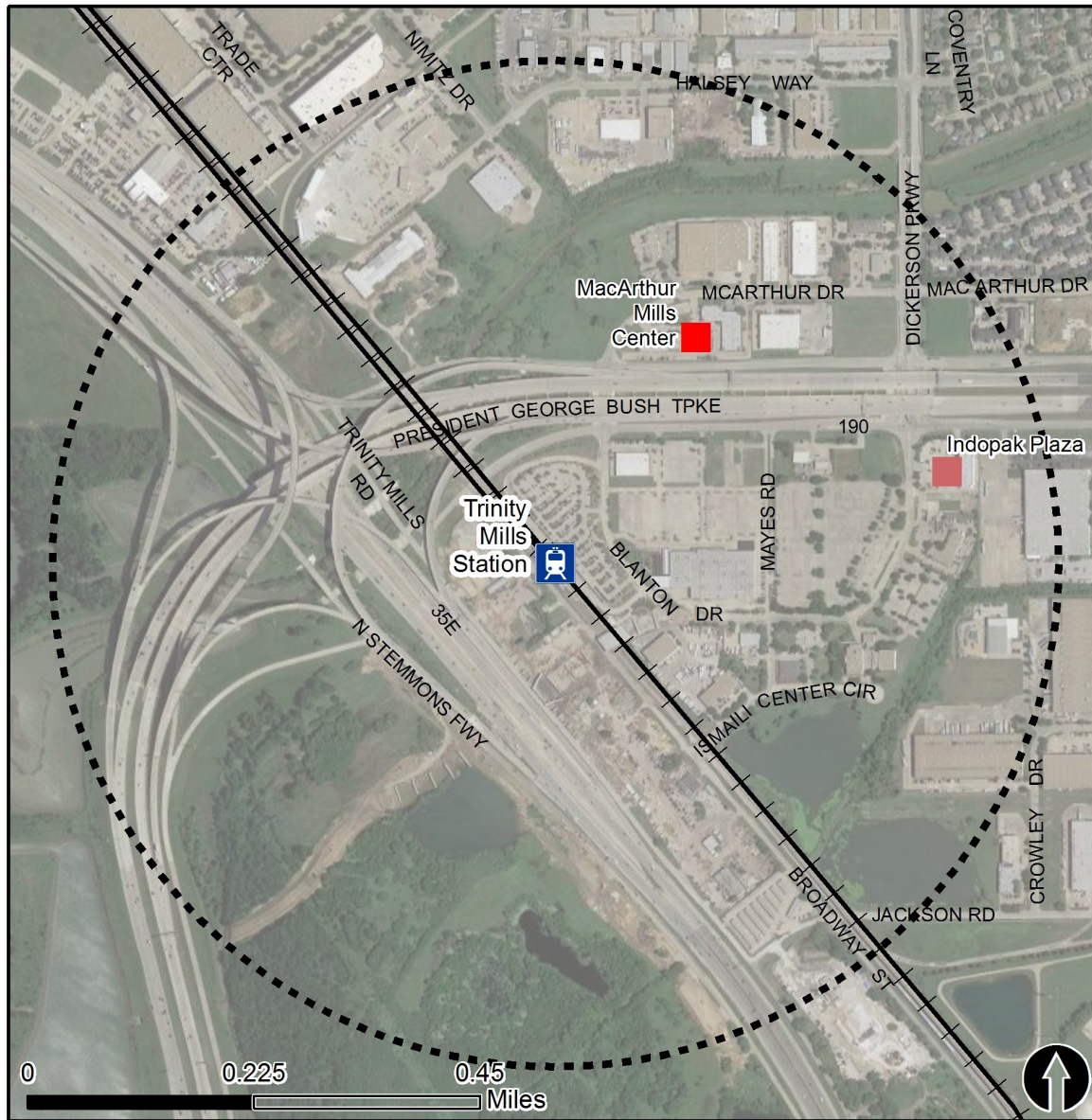


# Rail Station Fact Sheet –Trinity Mills Station



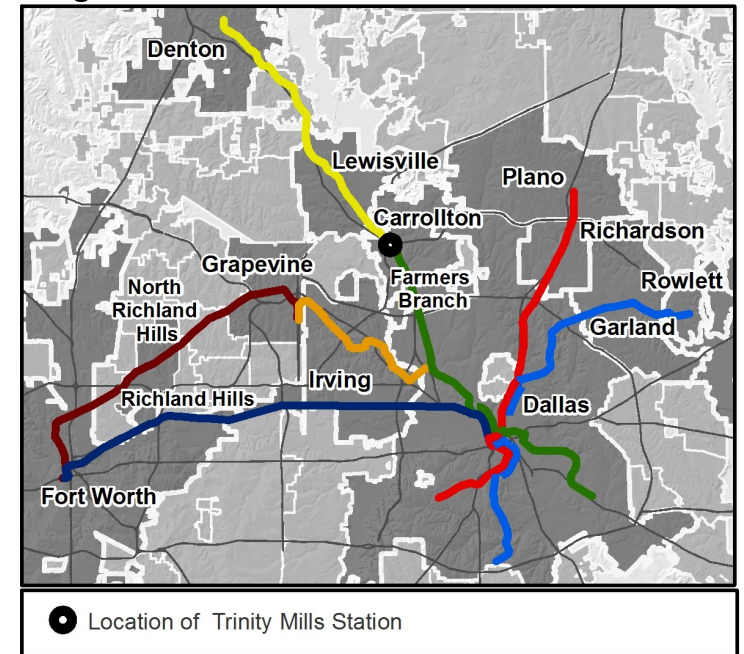
North Central Texas  
Council of Governments



## Station Overview

Trinity Mills Station is located at Trinity Mills Road and Broadway Street in Carrollton. The station opened in 2011 and is the transfer point between the DART Rail Green Line and the DCTA A-train.

## Regional Rail Transit Lines



0.5 Mile  
Station Buffer



Rail Stations



Rail Lines

### Key Developments



Office



Retail

# Rail Station Fact Sheet – Trinity Mills Station



## Station Characteristics<sup>1</sup>

Address	2525 Blanton Drive
City	Carrollton
Agency	Dallas Area Rapid Transit, Denton County Transportation Authority
Rail Line(s)	Green Line, A-Train
Corridor	Northwest (NW)
Year Opened	2011
Park & Ride Spaces	351

## Ridership<sup>1</sup>

2015 Avg. Weekday	1,414
2015 Avg. Saturday	554
2015 Avg. Sunday	249

## 2014 On-Board Transit Survey: Access Mode to Station<sup>2</sup>

Bike	0.0%
Drive Alone	14.7%
Carpool	0.9%
Walk	9.1%
Drop Off	13.1%
Other	0.0%
Transit Transfer	62.2%

## Station Area Plans and Studies

Title	Trinity Mill's Station Market Overview
Publisher	DART
Year	2013
Web Location	<a href="http://www.carrolltontxdevelopment.com/modules/showdocument.aspx?documentid=10213">http://www.carrolltontxdevelopment.com/modules/showdocument.aspx?documentid=10213</a>

## Station Area Characteristics (1/2 mile radius)

### Demographics<sup>3</sup>

Total Population	3,423
Population Density (pop/sq. mile)	434
Average Median Age	45
Average Median Income	\$48,525.00

### Housing<sup>3</sup>

Total Housing Units	1,299
Housing Density (units/sq. mile)	165
Percent Occupied	96%
Percent Owner-Occupied	26%
Percent Renter-Occupied	74%

### Commute To Work<sup>3</sup>

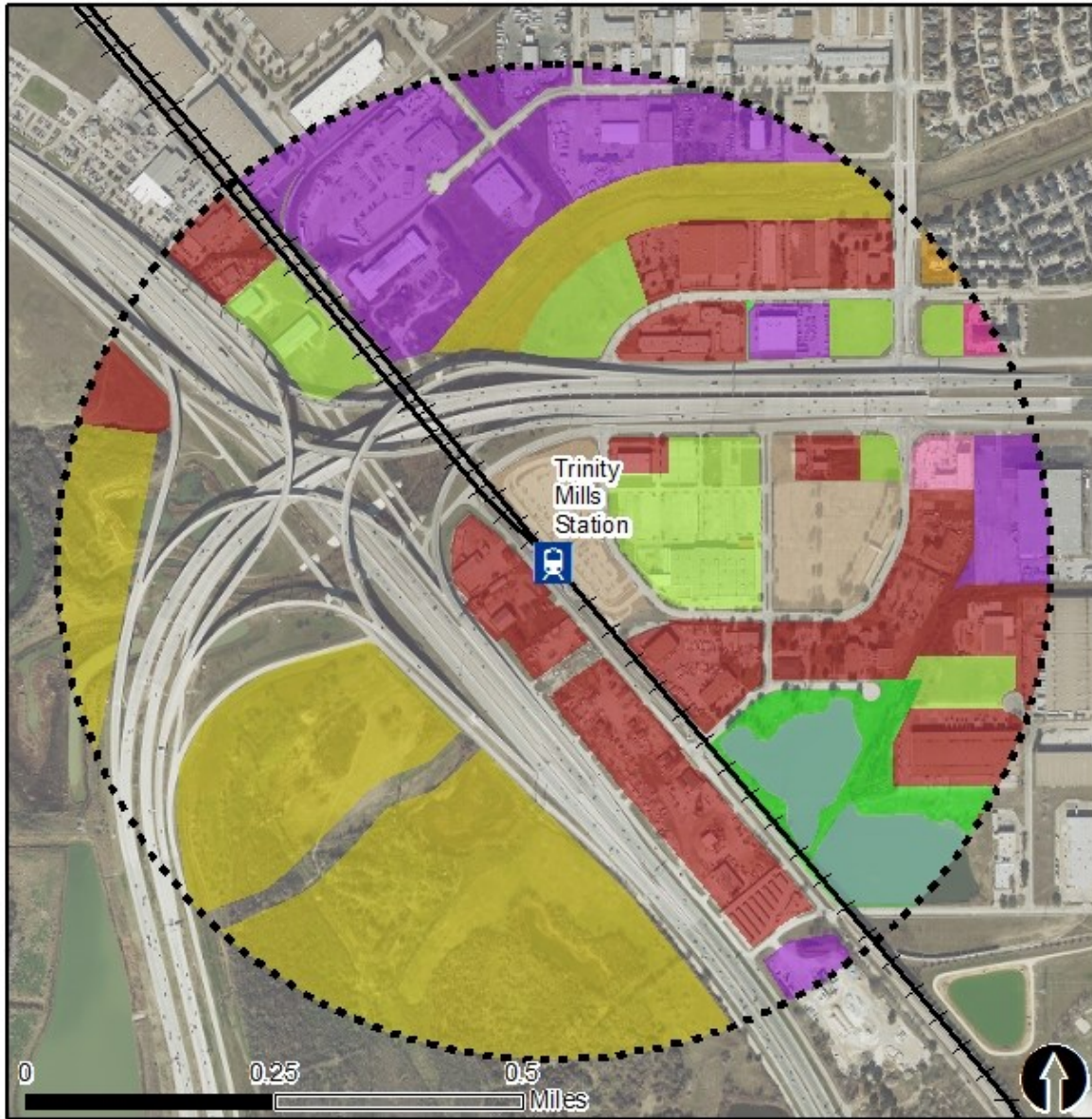
Percent Automobile	87.7%
Percent Drive Alone	82.3%
Percent Carpool	5.4%
Percent Transit	4.0%
Percent Bike	0.0%
Percent Walk	6.5%
Percent Other	0.0%
Percent Work from Home	1.8%
Percent Zero-Vehicle Households	8.9%

### Traffic Survey Zone 2017 Employment Forecast<sup>2</sup>

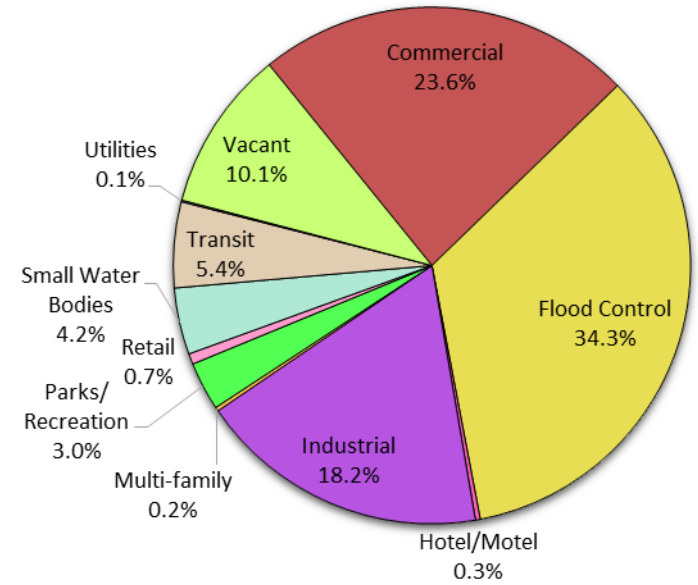
Total Jobs	7,179
Job Density (jobs/sq. mile)	2,842



# Land Use (2016) – Trinity Mills Station



Land Use Percentages

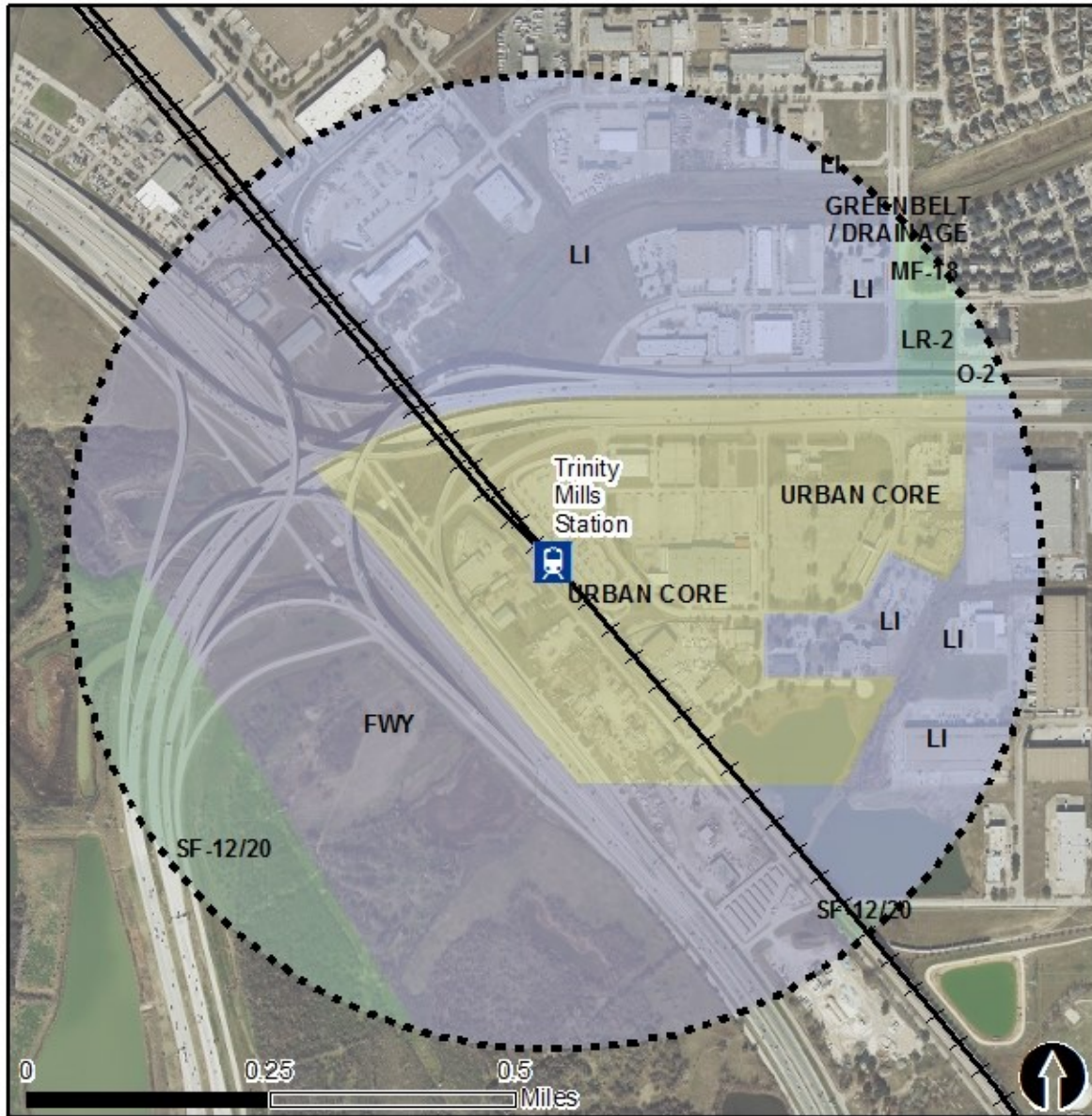


0.5 Mile  
Station Buffer



Rail Stations + + Rail Lines

# Zoning (2016) – Trinity Mills Station



## Zoning Districts

- FWY – Freeway District
- LI – Light Industrial District
- LR-2 – Local Retail
- MF-1 – Multi-Family
- O-2 – Office District
- SF-12/20 – Single-Family Homes

## Transit Center Zones

- Urban Core
- Urban General

For more information on zoning, please visit the City of Carrollton website at:

[www.trinitymills.org](http://www.trinitymills.org)



0.5 Mile  
Station Buffer



Rail Stations



Rail Lines

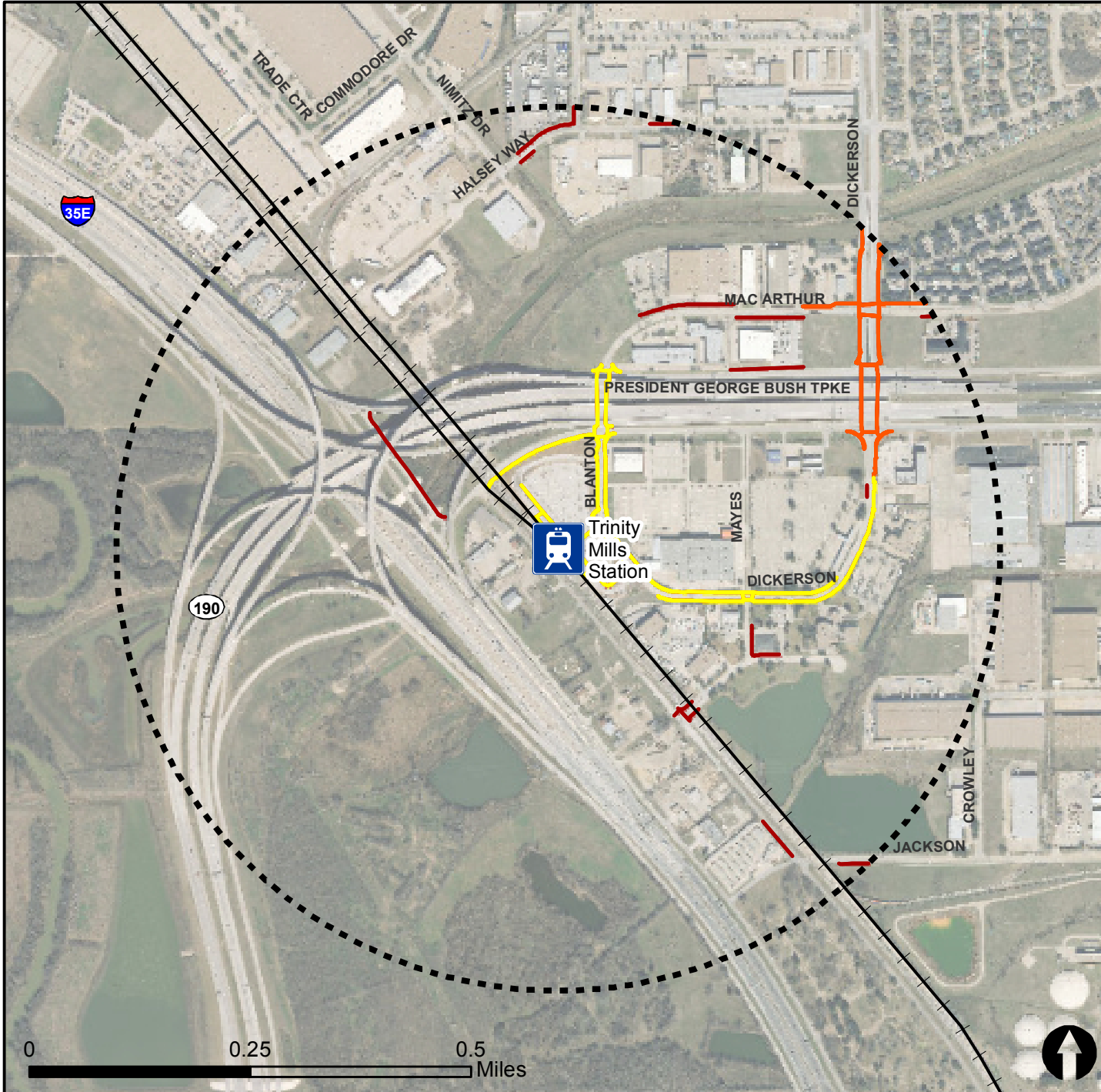


# Pedestrian Routes to Rail - Trinity Mills Station







Last Updated: February 2015



North Central Texas  
Council of Governments



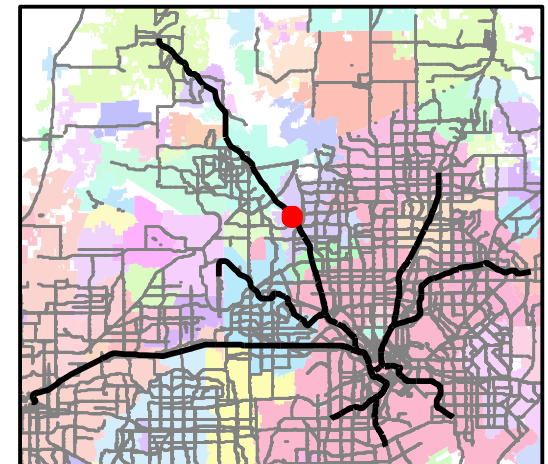
## Legend

-  Rail Stations
-  0.5 Mile Station Buffer
-  Railroads
-  Existing sidewalk facilities within a 0.5 mile walk distance
-  Existing sidewalk facilities greater than a 0.5 mile walk distance
-  Existing sidewalk facilities that are disconnected due to a gap in the network

## Project Overview

The Pedestrian Routes to Rail study identifies all existing pedestrian facilities within a half-mile radius of existing light rail and commuter rail stations in the Dallas-Fort Worth region based on 2014 data. ArcGIS Network Analyst tool was used to identify continuous facilities that are less than or greater than a half-mile actual walking distance to a station. The maps also reflect existing facilities that are disconnected due to gaps or other barriers not allowing a continuous pedestrian route to a station. The maps do not reflect the condition or ADA compliance of the existing infrastructure. More information on the Routes to Rail study and methodology is available at:

[nctcog.org/RoutesToRail](http://nctcog.org/RoutesToRail)



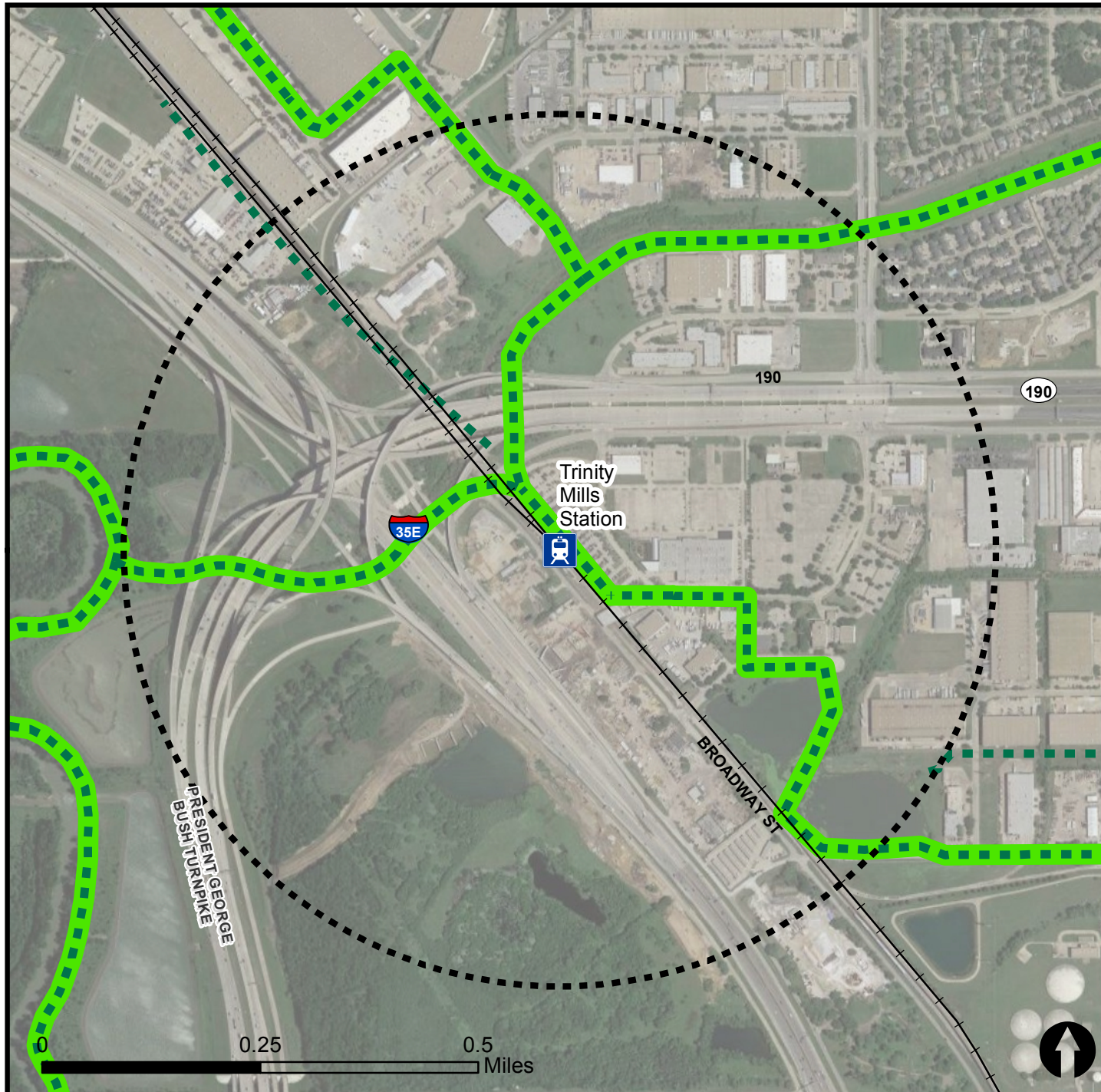


# Bicycle Routes to Rail - Trinity Mills Station

Last Updated: October 2016



North Central Texas  
Council of Governments



## Legend



Rail Stations



0.5 Mile  
Station Buffer

—+— Rail Lines

~ On-Street Bikeway, Existing

~ On-Street Bikeway, Planned

2040 Veloweb

~ Off-Street Path, Existing

~ Off-Street Path, Planned

## Project Overview

The Bicycle Routes to Rail study identifies all existing and planned bikeways in proximity to existing or under-construction light rail and commuter rail stations in the Dallas / Fort Worth region based on 2016 data. The maps reflect off-street paths (trails) and streets designated by local adopted master plans for dedicated bikeways (e.g. bike lanes, cycle tracks) located on the street. In accordance with the Texas Transportation Code, bicyclists have a right to the road. As such, the map does not reflect other roadways around the station that may have signed bike routes or by state law may be used by bicyclists. More information about the Routes to Rail study and methodology is available at:

[nctcog.org/RoutesToRail](http://nctcog.org/RoutesToRail)

