

SPROW

Sustainable Public Rights Of Way Subcommittee

November 17, 2020



Welcome & Introductions



Approve Summary from Oct. 20, 2020 Meeting

- ▶ The Subcommittee reviewed the Draft BMP Guidebook and made edits to some of the wording of the recommendations.
- ▶ The Subcommittee added a sustainability section to the BMP Guidebook to discuss how to use the tree matrix, how to conserve water, and provide other resources on sustainability.
- ▶ The Subcommittee would like to start discussions on the next chapter, Utilities, by bringing franchise utility representatives to the next meeting.

Overview

- NCTCOG's mission is to assist members in planning for common needs, cooperating for mutual benefit, and recognizing regional opportunities for improving the quality of life in North Central Texas.
- The Public Works initiative is led by the Public Works Council (PWC) which strives to solve common issues amongst public works programs across the region and provide resources/training for the region.
- The Sustainable Public Rights-of-Way (SPROW) Subcommittee is under the PWC to provide support and technical advice on sustainable public works infrastructure.
- SPROW created a Roadmap that linked communities to resources on different ROW options, however it didn't say what was the best option or how it was used in the region.
- SPROW decided to create a Best Management Practices (BMP) Guidebook specifically for the North Central Texas region. They sent out a survey to see what topics should be done first, landscape planning and vegetation maintenance was selected.

BMP Guidebook: Landscape Planning and Vegetation Maintenance

- Guidance on spacing and planting near utilities and curbs
- North Central Texas Form-Based Tree Matrix
- North Central Texas Form-Based Shrub Matrix
- Planting Near Street Fixtures Table

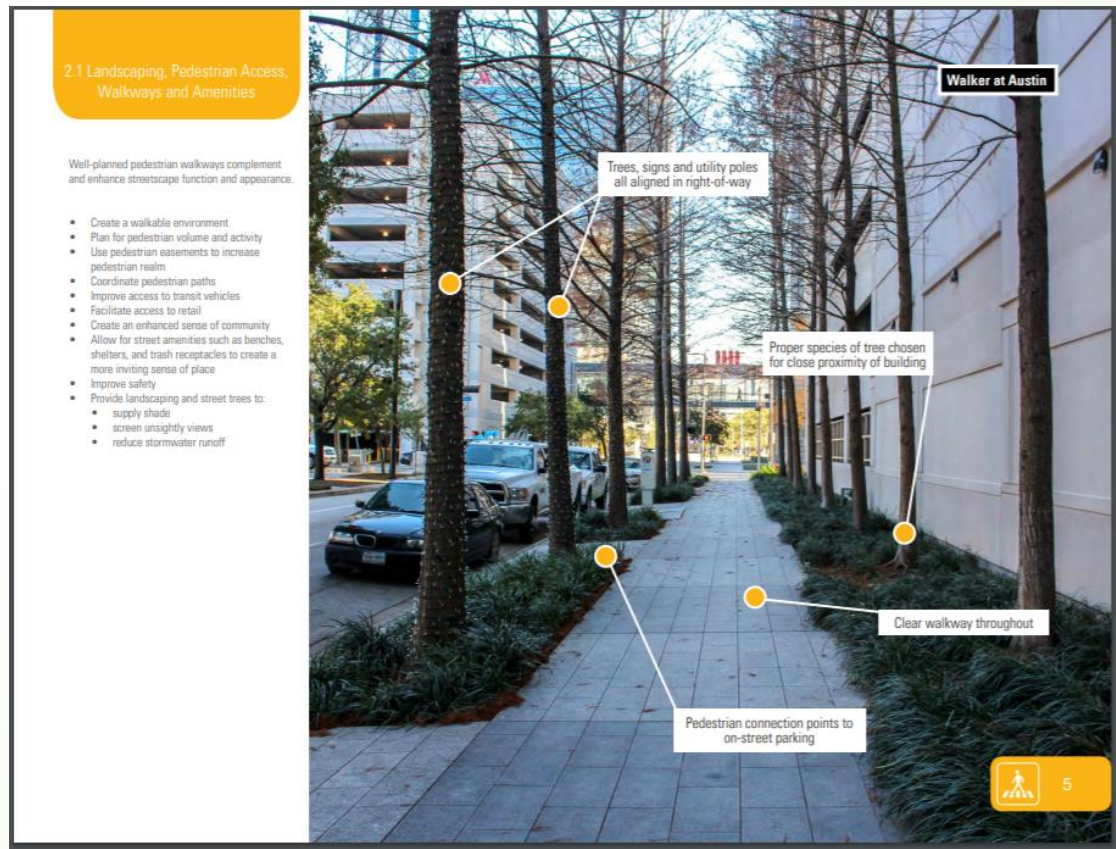
BMP Guidebook Review and Finalization Process

- Present Guidebook to SPROW Subcommittee
- Provide Guidebook to the Region for comments
 - How would the Subcommittee like to send the Guidebook out for comments?
- SPROW Subcommittee reviews comments for incorporation

Creating the BMP Guidebook

- Pictures and examples of the approved BMPs
- Tree and Shrub Matrix
- Table for Planting Near Street Fixtures

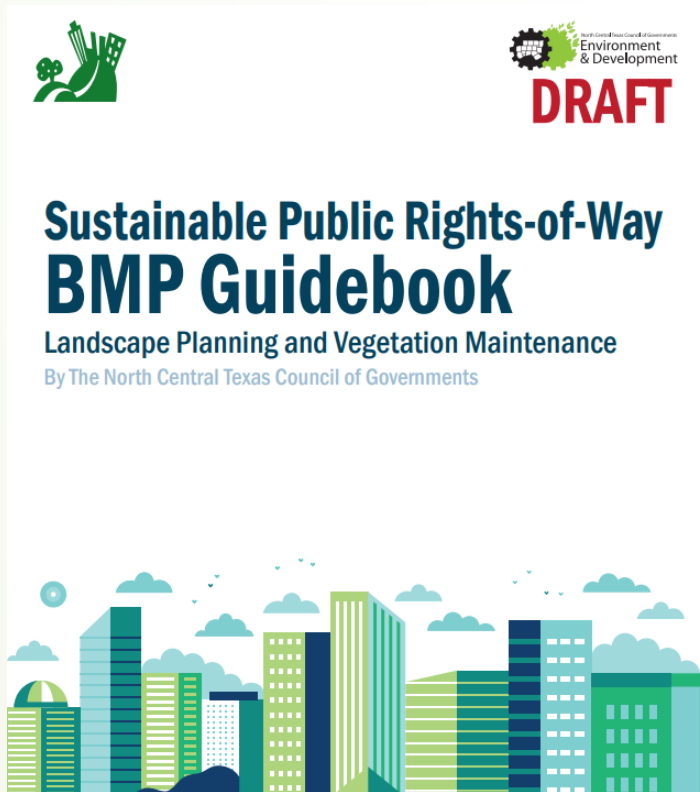
Scenic Houston Streetscape Resource Guide



Draft BMP Guidebook

➤ Posted on the SPROW website


➤ https://www.nctcog.org/nctcg/media/Environment-and-Development/Committee%20Documents/SPROW/FY2021/SPROW-Draft-Guidebook-Edits-11_17-20.pdf?ext=.pdf



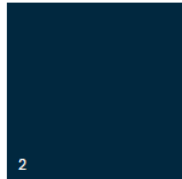

DRAFT

DRAFT


Tree Spacing




1



2



3



4

1. Trees should be planted a minimum of 5' away from the curb.
2. Tree spacing should be based on crown spread; see the Tree Matrix.
3. Root barriers can be used as long as the soil volume is adequately maintained for the species.
4. Trees planted near intersections and major driveways should be out of the visibility triangle. The city's code should be referenced for more details on the visibility triangle. If guidance from the city is not available refer to the Federal Highway Association 3.3.1 Sight Distance: https://safety.fhwa.dot.gov/local_rural/training/fhwasa1108/ch3.cfm#:~:text=Figure%203.%20Sight%20Distance%20Triangles%20for%204-Leg%20Stop-controlled%20Intersections9

The North Texas Form Based Tree Matrix Draft

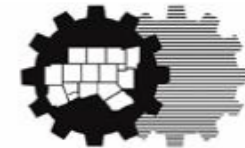
► Posted on the SPROW website

► <https://www.nctcog.org/nctcg/media/Environment-and-Development/Committee%20Documents/SPROW/FY2021/Form-Based-Tree-Matrix-Draft-10-20-20.pdf?ext=.pdf>



Sustainable Public Rights-of-Way BMP Guidebook

DRAFT



North Central Texas
Council of Governments

Tree Matrix

Canopy Shade Large Trees

Common Name	Scientific Name	Native (N) / Adapted (A)	Average Tree Height (ft)	Minimum Planting Space (sq ft)	Tolerates Poor Drainage	Drought Resistant	Shade Tolerant	Crown Spread (ft)	Max Tree Height (ft)	Average Life Span (yrs)	Evergreen (E) / Deciduous (D)	Drops Limbs, Fruit, Nuts, or Other Debris	Commercial Availability	Maintenance Needs (Red text denotes potentially destructive pest issue)	Listed on a Utility Tree List	Height Growth Rate (Fast approx. >1.2' yr)
Bitternut hickory	<i>Carya cordiformis</i>	A	35	140				30	45	25	D	Yes	Click here to search Plant Ant	Produces hickory nuts, may require cleanup		Fast
Native pecan	<i>Carya illinoensis</i>	N	40	320	Yes			45	60	35	D	Yes	Click here to search Plant Ant	Significant debris drop, produces edible nuts, may require cleanup		Moderate
Black hickory (aka pignut hickory, <i>C. buckleyi</i>)	<i>Carya texana</i>	N	30	140		Yes		30	40	30	D	Yes	Click here to search Plant Ant	Produces hickory nuts, may require cleanup		Moderate
Deodar cedar	<i>Cedrus deodara</i>	A	45	100			Yes	25	50	35	E		Click here to search Plant Ant	Requires shade with space above to grow		Fast
Common persimmon	<i>Diospyros virginiana</i>	N	25	100				25	30	35	D	Yes	Click here to search Plant Ant	Generally able to produce edible fruit, may require cleanup		Moderate
Texas ash (aka <i>F. albicans</i>)	<i>Fraxinus texensis</i>	N	35	190		Yes		35	45	35	D		Click here to search Plant Ant	High risk of loss due to EAB, may require ongoing pesticide treatment		Moderate

Utilities

- ▶ The next chapter of the BMP Guidebook, based on the topics survey that went out in late 2019, is Utilities (Coexisting Types, Franchises, Documentation, Coordinated Needs, etc.)
 - ▶ Each franchise has a different process, should there be different sections for each type?
 - ▶ How can the group make the BMP Guidebook beneficial and communicate the right information without getting too detailed?
 - ▶ The Guidebook needs to provide guidance that pertains to every jurisdiction in the NCT Region.

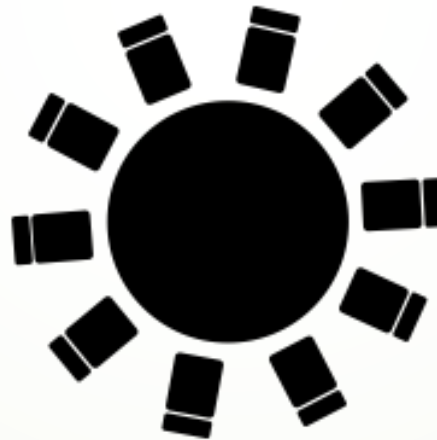
Franchise Utilities

- ▶ What are the necessary items, points, criteria, advice, etc. that should be included in a Franchise Utility BMP chapter?
- ▶ Are there common 'rules of thumb' that designers/cities need to know about franchise with regards to the following:
 - ▶ Design criteria for city facilities next to franchise facilities which are in an easement? Not in an easement? Right of way?
 - ▶ Describe the process that franchises prefer cities/designers to go through to do the following (each franchise will probably have different process...do we include this specific detail in the BMP)
 - ▶ Locate existing franchise utilities
 - ▶ Place city infrastructure across or within franchise utility easements
- ▶ What are the expectations of each party for ROW access, maintenance, space used, etc.?

Next Steps

- ▶ Determine action items for Subcommittee members and NCTCOG staff.

Member Roundtable



Next Meeting

- ▶ Tuesday, January 19, 2021 1:30pm
 - ▶ Microsoft Teams

Contact

Olivia Kale

Environment and Development Planner

okale@nctcog.org

817.695.9213

Mia Brown, CFM

Senior Planner of Environment and
Development

mbrown@nctcog.org

817.695.9227

Tamara Cook, AICP

Senior Program Manager, Environment
& Development

tcook@nctcog.org

817.695.9221

Edith Marvin, P.E.

Director, Environment & Development

emarvin@nctcog.org

817.695.9211

Connect



Facebook.com/nctcogenv



@nctcogenv



nctcogenv



youtube.com/user/nctcoged



EandD@nctcog.org



nctcog.org/envir