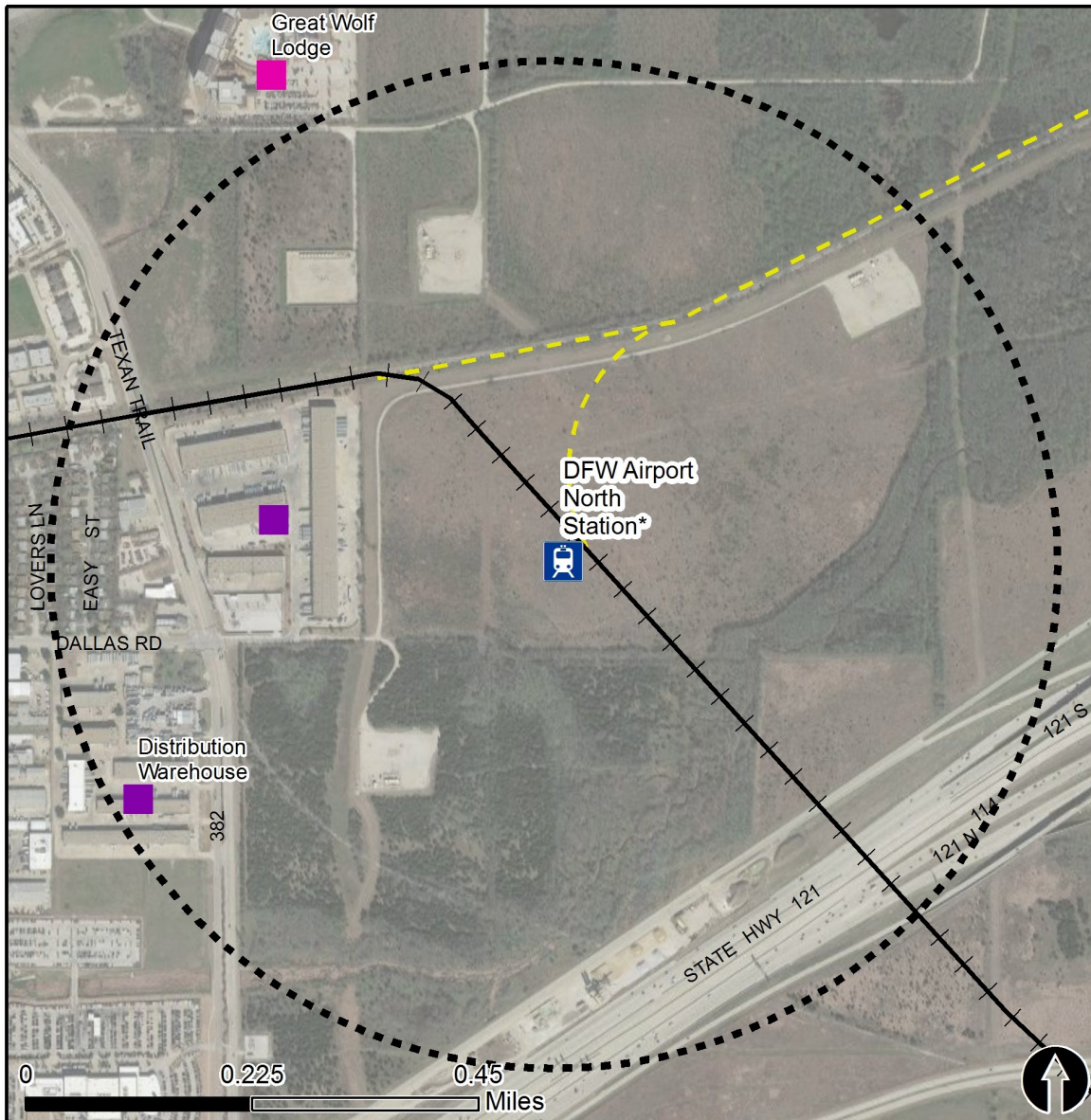


# Rail Station Fact Sheet – DFW Airport North Station\*

(\*station under construction with anticipated start of service in late 2018)



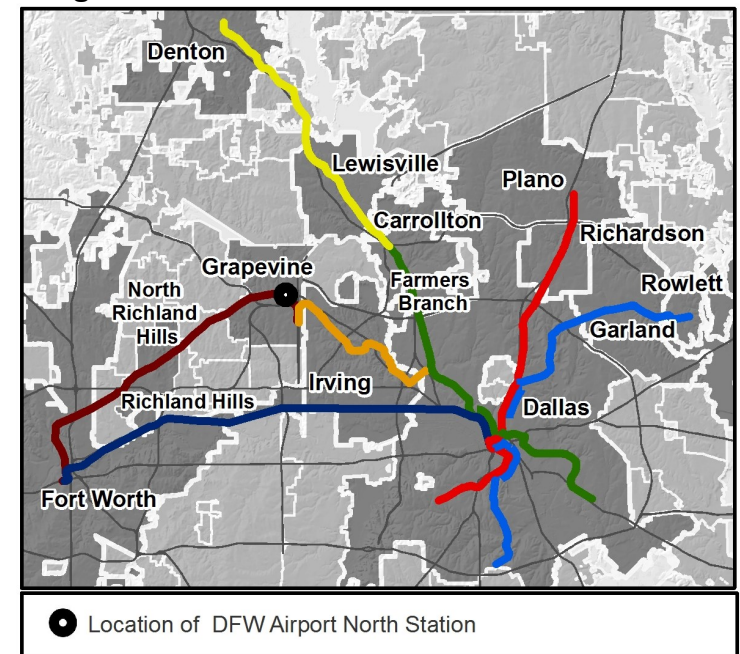
North Central Texas  
Council of Governments



## Station Overview

DFW Airport North Station will be located on DFW International Airport property east of Texan Trail and north Highway 121/114. The station's anticipated opening is late 2018 with TEX Rail service from Downtown Fort Worth to DFW International Airport Terminal B. DART's Cotton Belt Station is planned to be located adjacent to the east side of the TEX Rail Platform.

## Regional Rail Transit Lines



0.5 Mile  
Station Buffer



Rail Stations



Rail Lines

### Key Developments



Hotel



Industrial

# Rail Station Fact Sheet – DFW Airport North Station\*

(\*station under construction with anticipated start of service in late 2018)



North Central Texas  
Council of Governments

## Station Characteristics<sup>1</sup>

Address	Texan Trail
City	Grapevine
Agency	Fort Worth Transportation Authority
Rail Line(s)	TEX Rail
Corridor	TEX Rail
Year Opened	2018
Park & Ride Spaces	208

## Ridership<sup>1</sup>

2015 Avg. Weekday	N/A
2015 Avg. Saturday	N/A
2015 Avg. Sunday	N/A

## 2014 On-Board Transit Survey: Access Mode to Station<sup>2</sup>

Bike	N/A
Drive Alone	N/A
Carpool	N/A
Walk	N/A
Drop Off	N/A
Other	N/A
Transit Transfer	N/A

## Station Area Plans and Studies

Title	DFW Airport-North Station Area Plan
Publisher	FWTA and DFW Airport
Year	2009
Web Location	<a href="http://www.texrail.com/About/RouteandStations/Stations.aspx">http://www.texrail.com/About/RouteandStations/Stations.aspx</a>

## Station Area Characteristics (1/2 mile radius)

### Demographics<sup>3</sup>

Total Population	2,537
Population Density (pop/sq. mile)	130
Average Median Age	39
Average Median Income	\$31,691.33

### Housing<sup>3</sup>

Total Housing Units	1,177
Housing Density (units/sq. mile)	60
Percent Occupied	93%
Percent Owner-Occupied	48%
Percent Renter-Occupied	52%

### Commute To Work<sup>3</sup>

Percent Automobile	84.5%
Percent Drive Alone	79.9%
Percent Carpool	4.6%
Percent Transit	0.0%
Percent Bike	9.4%
Percent Walk	0.0%
Percent Other	3.3%
Percent Work from Home	2.8%
Percent Zero-Vehicle Households	2.6%

### Traffic Survey Zone 2017 Employment Forecast<sup>2</sup>

Total Jobs	1,986
Job Density (jobs/sq. mile)	640

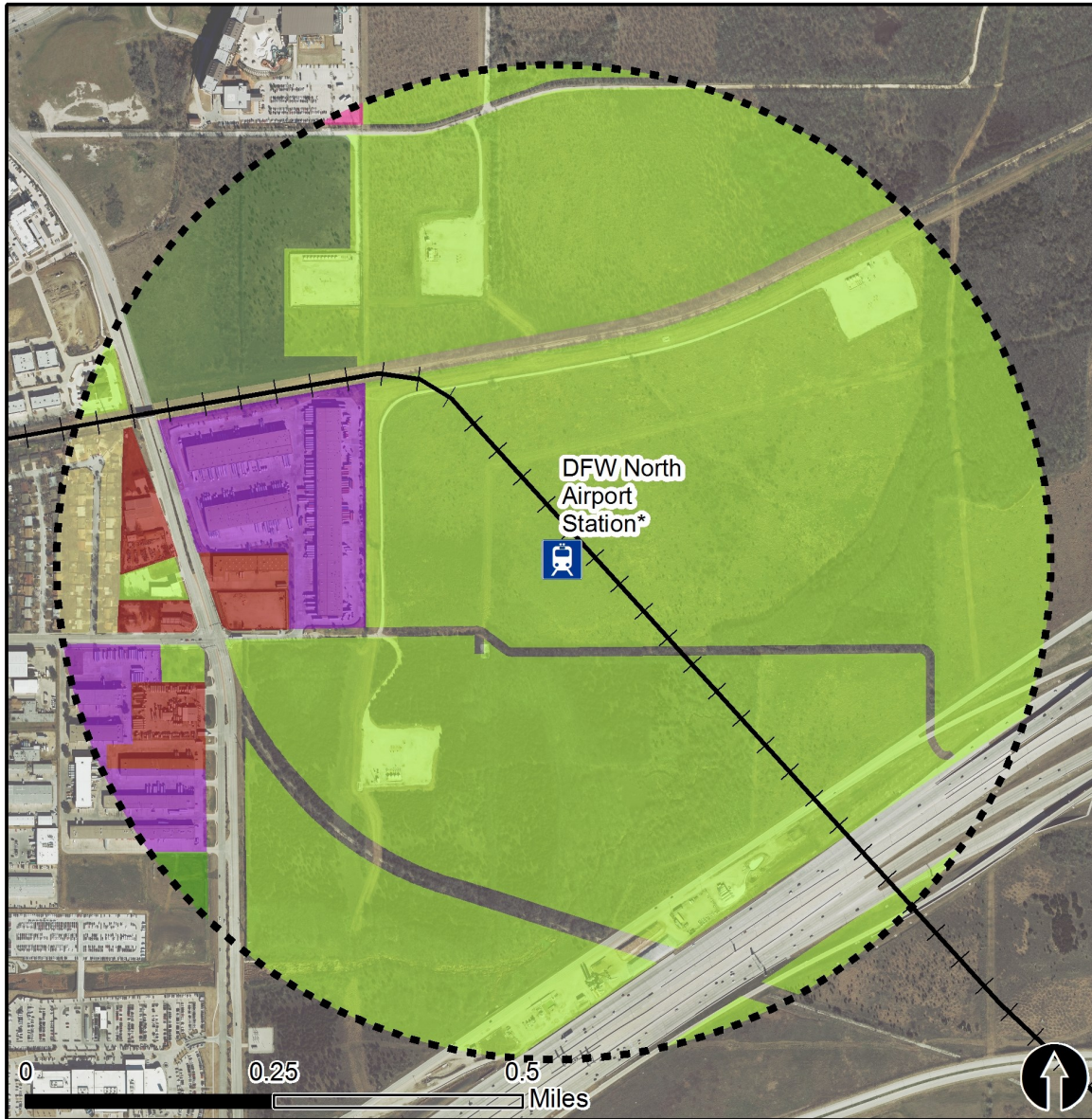


# Land Use (2016) – DFW Airport North Station\*

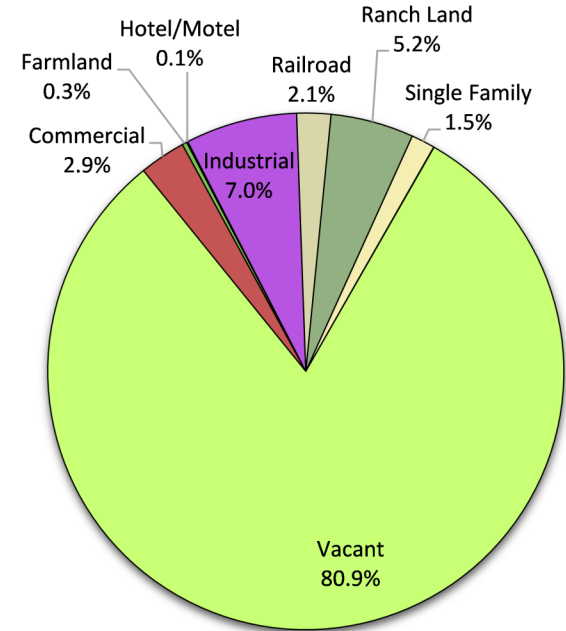
(\*station under construction with anticipated start of service in late 2018)



North Central Texas  
Council of Governments



## Land Use Percentages



0.5 Mile  
Station Buffer



Rail Stations



Rail Lines



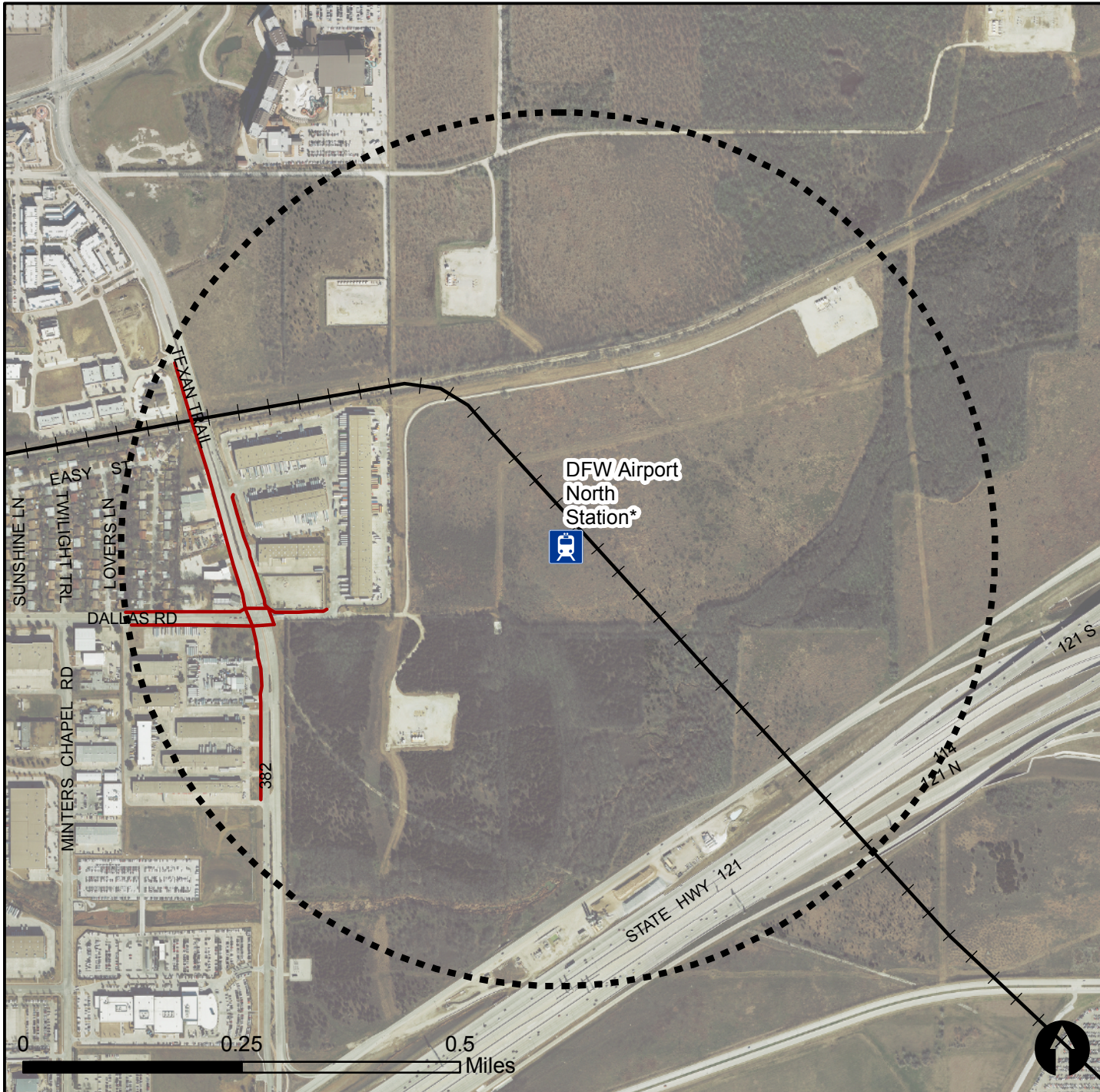


# Pedestrian Routes to Rail - DFW Airport North Station







Last Updated: October 2016 (\*Station under construction with anticipated start of service in late 2018)



North Central Texas  
Council of Governments



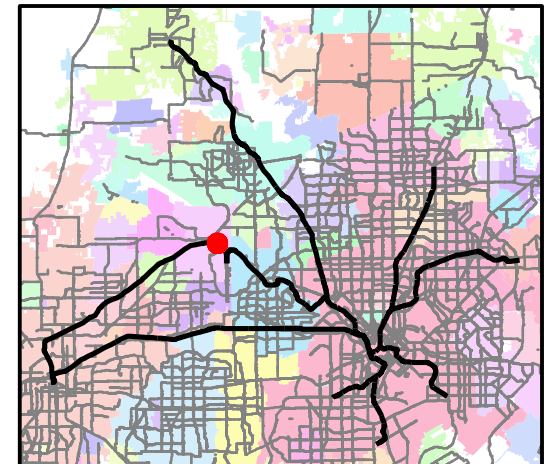
## Legend

-  Rail Stations
-  0.5 Mile Station Buffer
-  Railroads
-  Existing sidewalk facilities within a 0.5 mile walk distance
-  Existing sidewalk facilities greater than a 0.5 mile walk distance
-  Existing sidewalk facilities that disconnected due to a gap in the network

## Project Overview

The Pedestrian Routes to Rail study identifies all existing pedestrian facilities within a half-mile radius of existing light rail and commuter rail stations in the Dallas-Fort Worth region based on 2014 data. ArcGIS Network Analyst tool was used to identify continuous facilities that are less than or greater than a half-mile actual walking distance to a station. The maps also reflect existing facilities that are disconnected due to gaps or other barriers not allowing a continuous pedestrian route to a station. The maps do not reflect the condition or ADA compliance of the existing infrastructure. More information on the Routes to Rail study and methodology is available at:

[nctcog.org/RoutesToRail](http://nctcog.org/RoutesToRail)



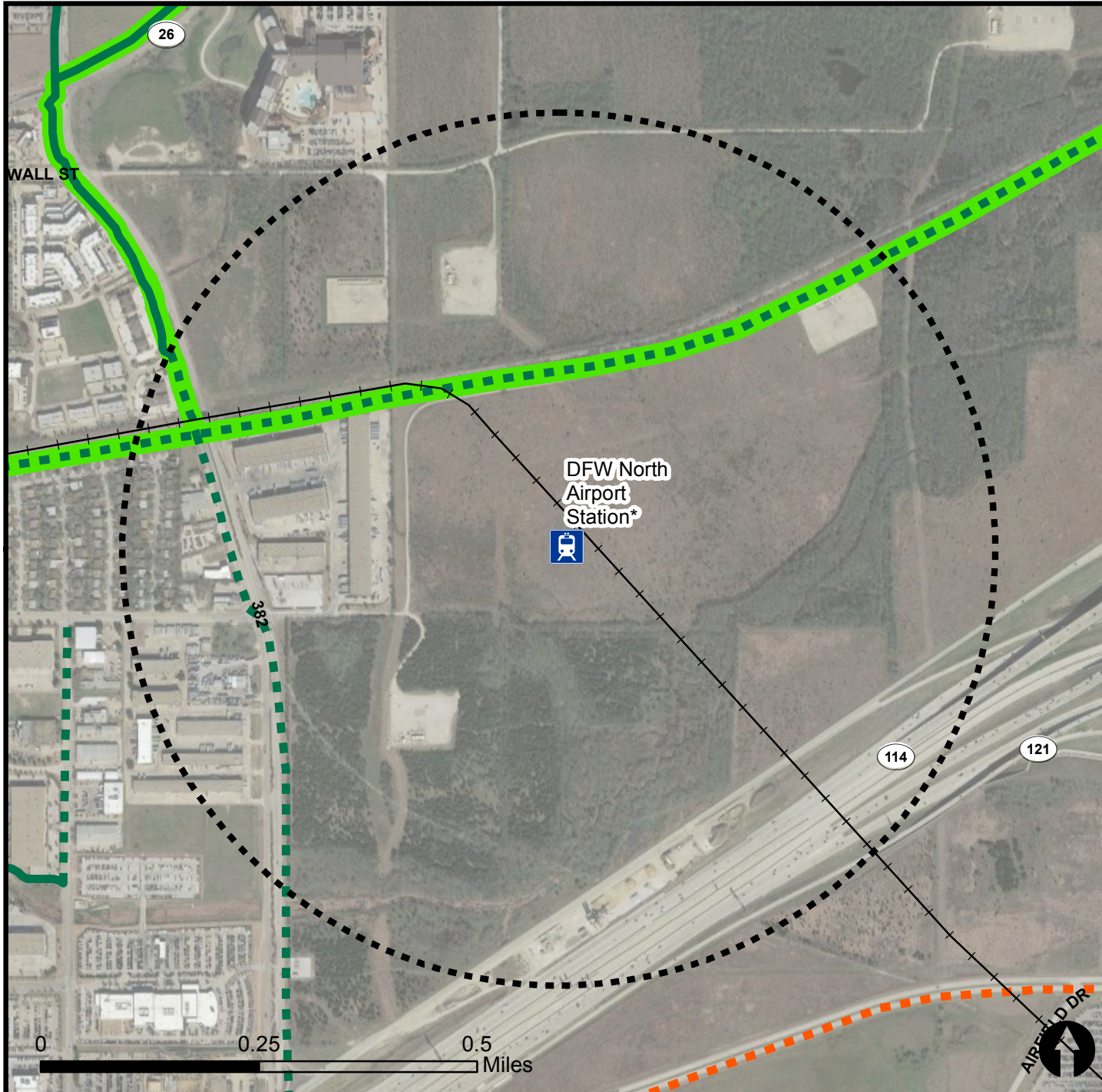


# Bicycle Routes to Rail - DFW Airport North Station\*

Last Updated: October 2016 (\*Station under construction with anticipated start of service in late 2018)



North Central Texas  
Council of Governments



## Legend

- Rail Stations
- 0.5 Mile Station Buffer
- Rail Lines
- On-Street Bikeway, Existing
- On-Street Bikeway, Planned
- 2040 Veloweb
- Off-Street Path, Existing
- Off-Street Path, Planned

## Project Overview

The Bicycle Routes to Rail study identifies all existing and planned bikeways in proximity to existing or under-construction light rail and commuter rail stations in the Dallas / Fort Worth region based on 2016 data. The maps reflect off-street paths (trails) and streets designated by local adopted master plans for dedicated bikeways (e.g. bike lanes, cycle tracks) located on the street. In accordance with the Texas Transportation Code, bicyclists have a right to the road. As such, the map does not reflect other roadways around the station that may have signed bike routes or by state law may be used by bicyclists. More information about the Routes to Rail study and methodology is available at:

[nctcog.org/RoutesToRail](http://nctcog.org/RoutesToRail)

