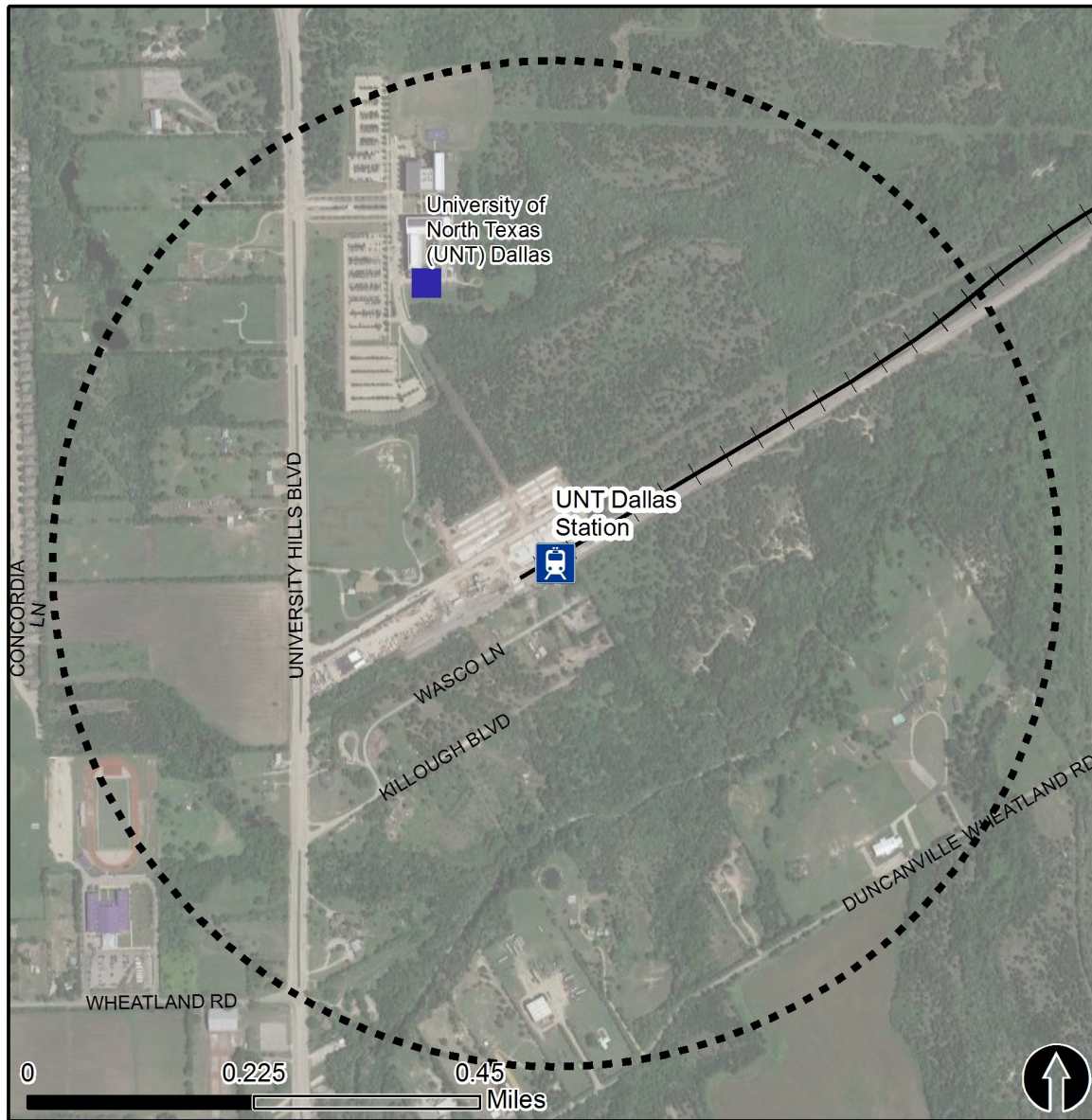


Rail Station Fact Sheet – UNT Dallas Station



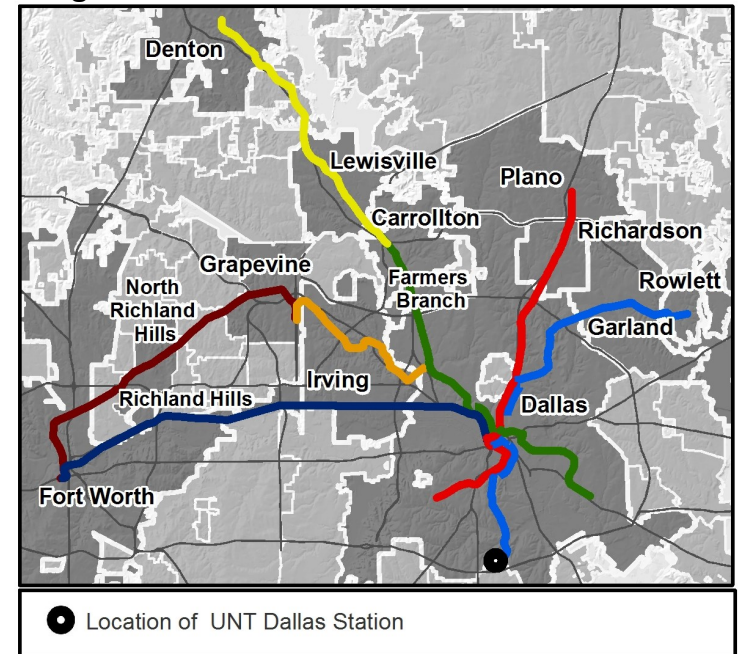
North Central Texas
Council of Governments



Station Overview

UNT Dallas Station is located on the east side of University Hills Boulevard in Dallas. It is connected by a walking path to the University of North Texas Dallas Campus. The station opened in 2016 and is the southern terminus of the DART Blue Line.

Regional Rail Transit Lines



0.5 Mile
Station Buffer



Rail Stations



Rail Lines

Key Developments



Education

Rail Station Fact Sheet – UNT Dallas Station



North Central Texas
Council of Governments

Station Characteristics¹

Address	
City	Dallas
Agency	Dallas Area Rapid Transit
Rail Line(s)	Blue Line
Corridor	South Oak Cliff (SOC)
Year Opened	2016
Park & Ride Spaces	474

Ridership¹

2015 Avg. Weekday	N/A
2015 Avg. Saturday	N/A
2015 Avg. Sunday	N/A

2014 On-Board Transit Survey: Access Mode to Station²

Bike	N/A
Drive Alone	N/A
Carpool	N/A
Walk	N/A
Drop Off	N/A
Other	N/A
Transit Transfer	N/A

Station Area Plans and Studies

Title	UNT - Dallas Area Context Sensitive Transportation Study
Publisher	NCTCOG and the City of Dallas
Year	2011
Web Location	http://www.nctcog.org/trans/sustdev/landuse/funding/plan/July11_Report_Final.pdf

Station Area Characteristics (1/2 mile radius)

Demographics³

Total Population	7,179
Population Density (pop/sq. mile)	1,150
Average Median Age	38
Average Median Income	\$36,190.00

Housing³

Total Housing Units	2,926
Housing Density (units/sq. mile)	469
Percent Occupied	91%
Percent Owner-Occupied	68%
Percent Renter-Occupied	32%

Commute To Work³

Percent Automobile	91.4%
Percent Drive Alone	87.3%
Percent Carpool	4.1%
Percent Transit	4.5%
Percent Bike	0.0%
Percent Walk	0.0%
Percent Other	1.6%
Percent Work from Home	2.5%
Percent Zero-Vehicle Households	10.0%

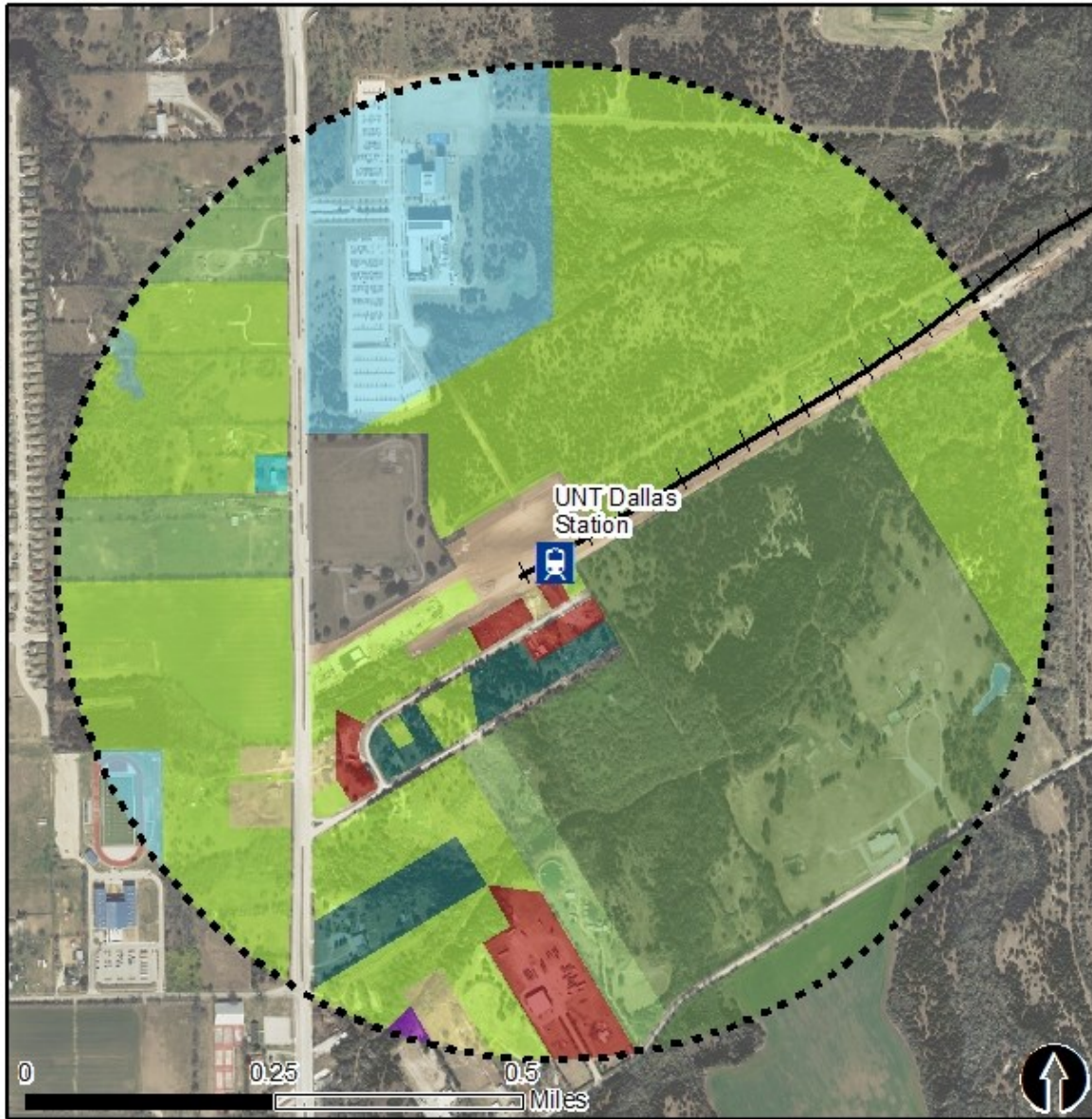
Traffic Survey Zone 2017 Employment Forecast²

Total Jobs	216
Job Density (jobs/sq. mile)	62

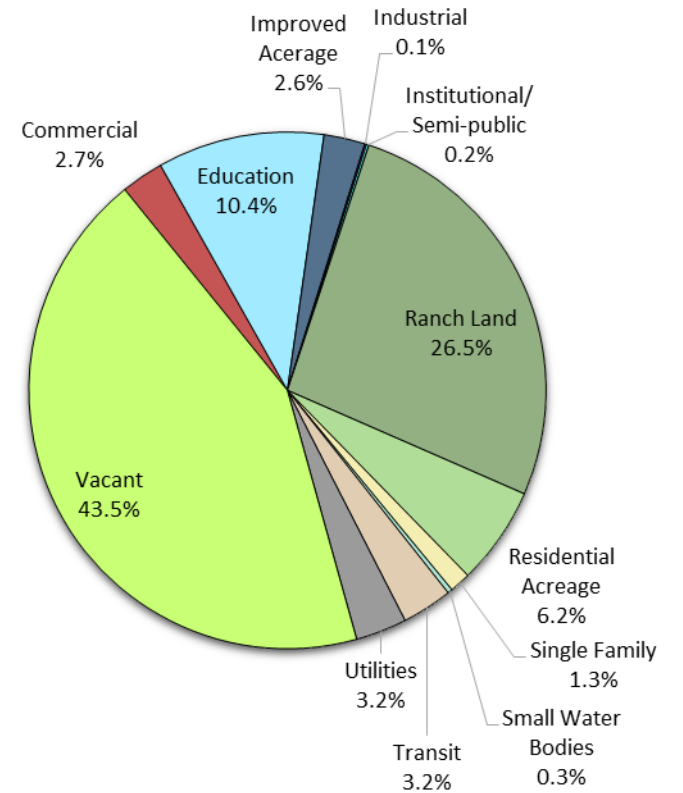
Land Use (2016) – UNT Dallas Station



North Central Texas
Council of Governments



Land Use Percentages

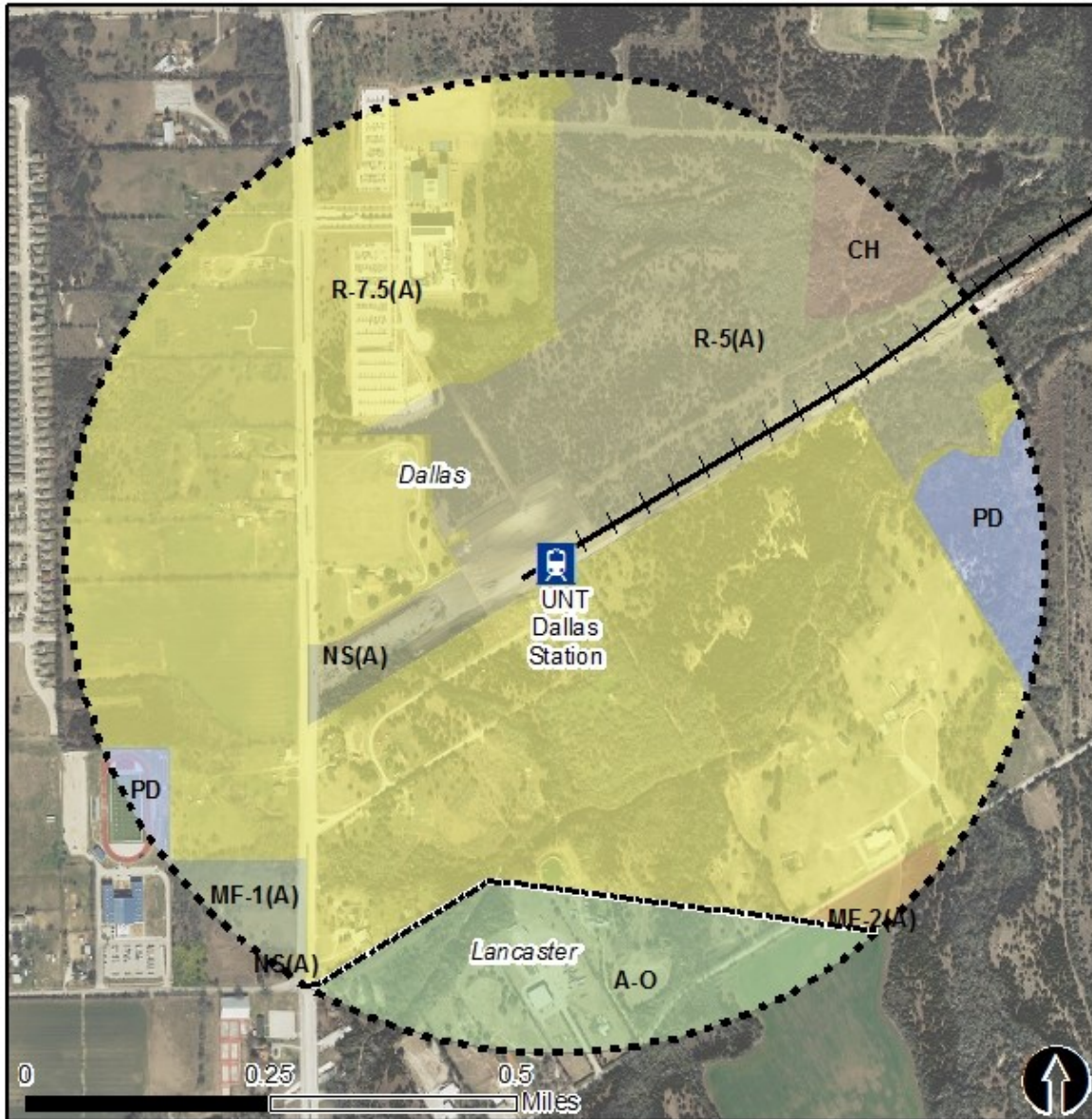


0.5 Mile
Station Buffer



Rail Stations + + Rail Lines

Zoning (2016) – UNT Dallas Station



Zoning Districts

Dallas

- CH – Clustered Housing
- MF-1(A) – Multifamily
- MF-2(A) – Multifamily
- NS(A) – Neighborhood Service
- PD – Planned Development
- R-7.5(A) – Single Family

Lancaster

- A-O – Agricultural Open

For more information on zoning, please visit:

City of Dallas Zoning website:

<http://gis.dallascityhall.com/zoningweb/>

City of Lancaster website:

<http://www.lancaster-tx.com/295/Zoning>



0.5 Mile
Station Buffer



Rail Stations



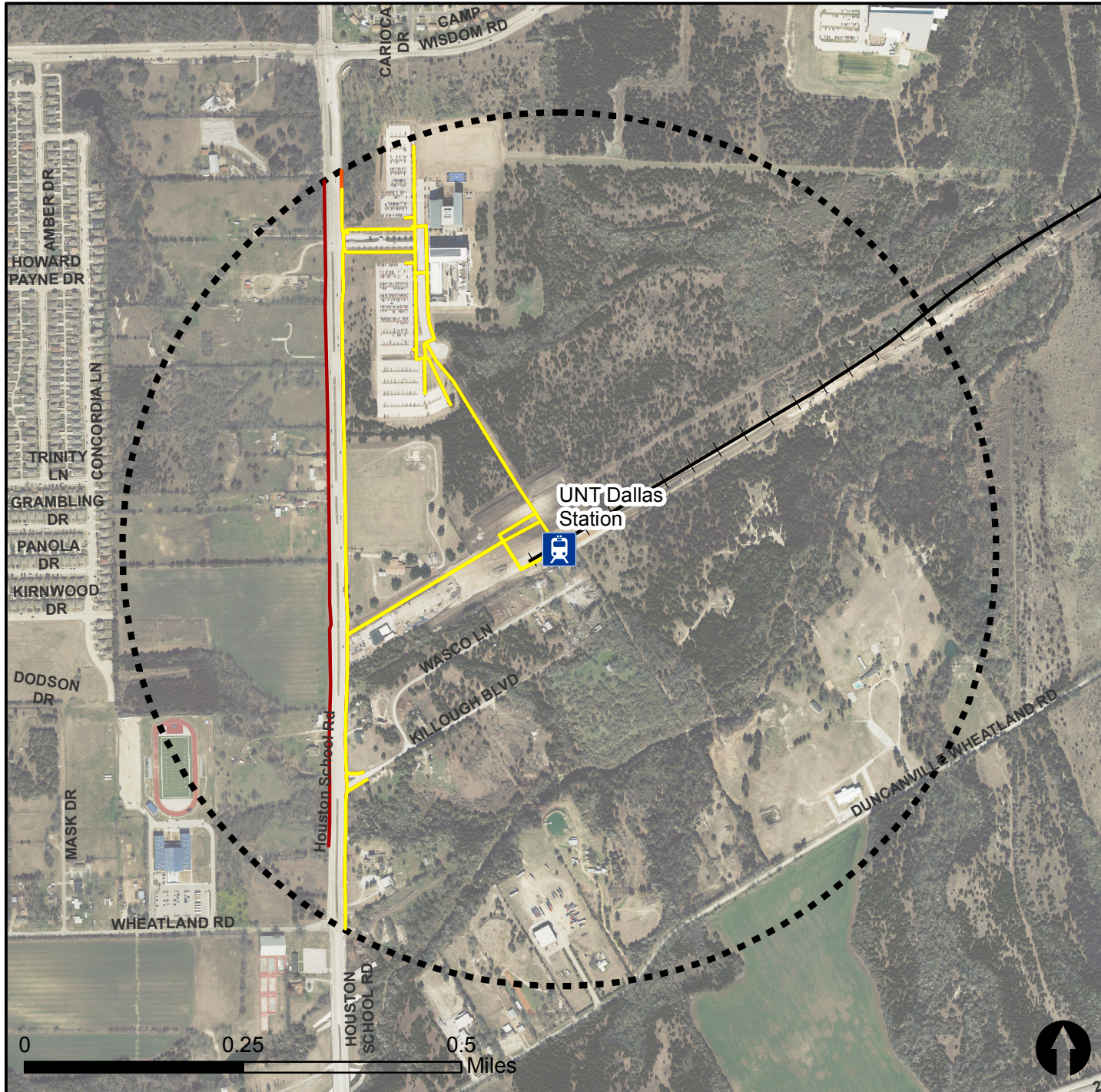
Rail Lines

Pedestrian Routes to Rail - UNT Dallas Station

Last Updated: October 2016



North Central Texas
Council of Governments



Legend



Rail Stations



0.5 Mile
Station Buffer



Railroads



Existing sidewalk facilities within a 0.5
mile walk distance



Existing sidewalk facilities greater
than a 0.5 mile walk distance

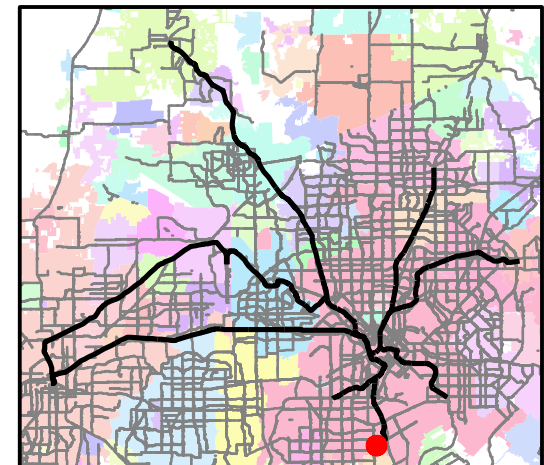


Existing sidewalk facilities that
disconnected due to a gap in the
network

Project Overview

The Pedestrian Routes to Rail study identifies all existing pedestrian facilities within a half-mile radius of existing light rail and commuter rail stations in the Dallas-Fort Worth region based on 2014 data. ArcGIS Network Analyst tool was used to identify continuous facilities that are less than or greater than a half-mile actual walking distance to a station. The maps also reflect existing facilities that are disconnected due to gaps or other barriers not allowing a continuous pedestrian route to a station. The maps do not reflect the condition or ADA compliance of the existing infrastructure. More information on the Routes to Rail study and methodology is available at:

nctcog.org/RoutesToRail



Bicycle Routes to Rail - UNT Dallas Station

Last Updated: October 2016



North Central Texas
Council of Governments



Legend



Rail Stations



0.5 Mile
Station Buffer



Rail Lines



On-Street Bikeway, Existing



On-Street Bikeway, Planned



2040 Veloweb



Off-Street Path, Existing



Off-Street Path, Planned

Project Overview

The Bicycle Routes to Rail study identifies all existing and planned bikeways in proximity to existing or under-construction light rail and commuter rail stations in the Dallas / Fort Worth region based on 2016 data. The maps reflect off-street paths (trails) and streets designated by local adopted master plans for dedicated bikeways (e.g. bike lanes, cycle tracks) located on the street. In accordance with the Texas Transportation Code, bicyclists have a right to the road. As such, the map does not reflect other roadways around the station that may have signed bike routes or by state law may be used by bicyclists. More information about the Routes to Rail study and methodology is available at:

nctcog.org/RoutesToRail

