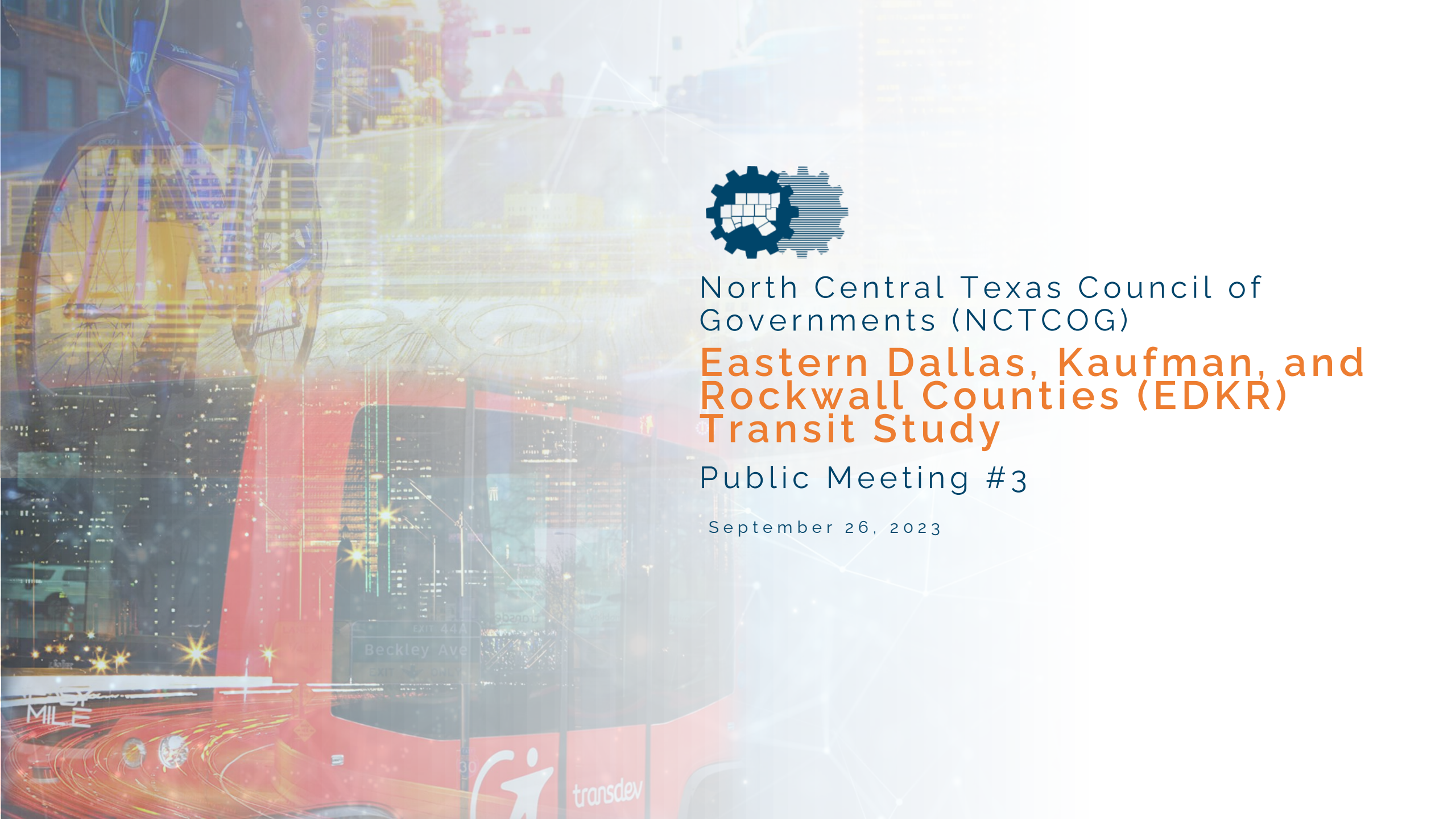


North Central Texas Council of
Governments (NCTCOG)

Eastern Dallas, Kaufman, and Rockwall Counties (EDKR) Transit Study

Public Meeting #3

September 26, 2023



AGENDA



Welcome and Introductions



NCTCOG Background and Study Overview



Travel Patterns Analysis



Transit Market & Needs Assessment



Public Engagement: Input/Facilitation



Next Steps & Upcoming Schedule



Welcome and Introductions

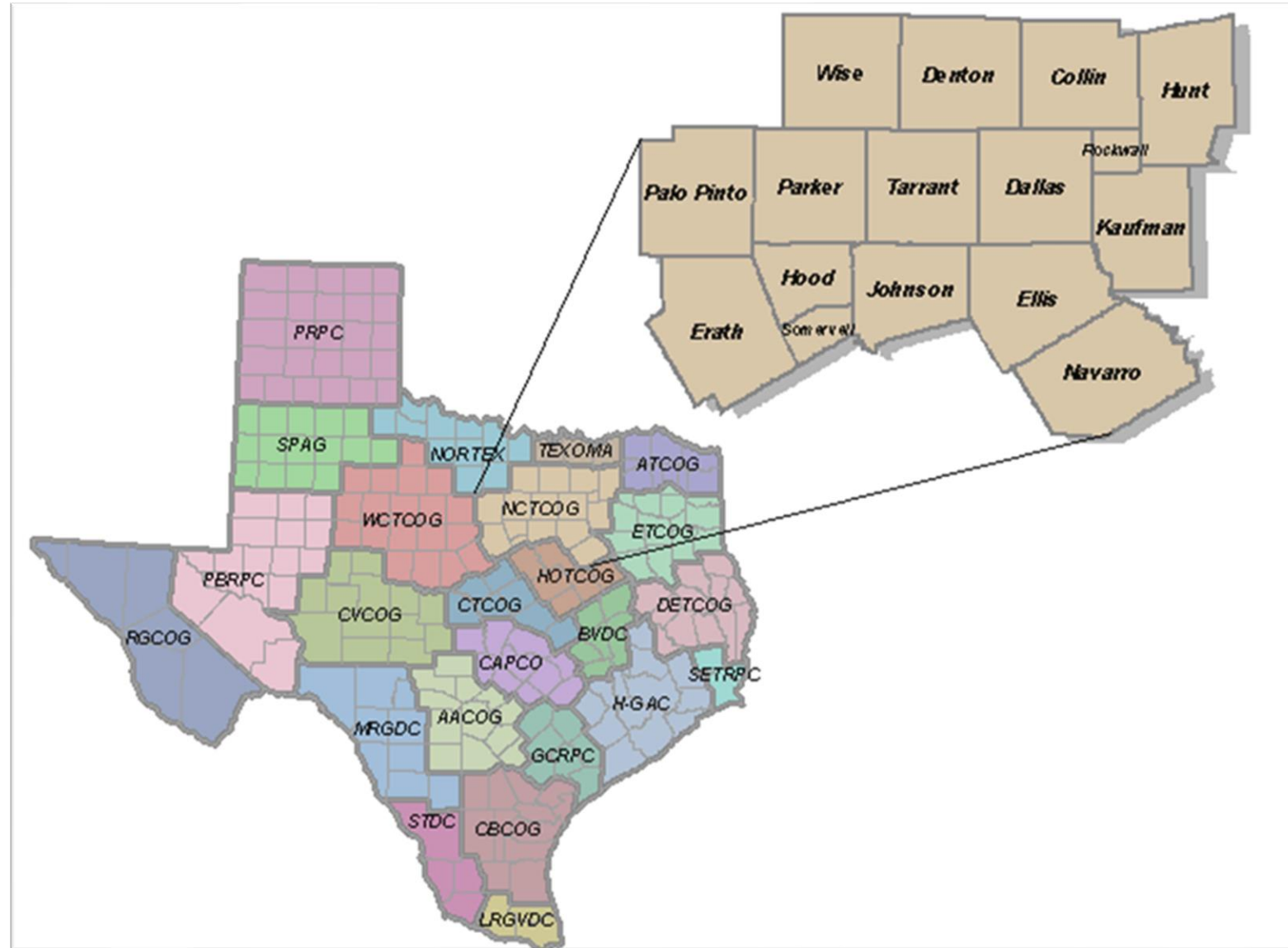
Introduction by:

Shannon Stevenson
Senior Program Manager
NCTCOG



What is NCTCOG?

- A voluntary association of local governments
- 238 member governments, including:
 - 16 counties
 - 169 cities
 - 22 school districts
 - 27 special districts



What does NCTCOG do?

Primary Tasks

- Strengthens individual and collective power of local governments by recognizing regional opportunities, eliminating duplication, and making joint decisions
- Assists local governments in planning for common needs, cooperating for mutual benefit, and coordinating for sound regional development

Departments

- Aging Services
- Economic Development
- Emergency Preparedness
- Environment & Development
- NCT 9-1-1
- Public Safety
- Regional Data
- Transportation
- Workforce Solutions



North Central Texas
Council of Governments
(NCTCOG)

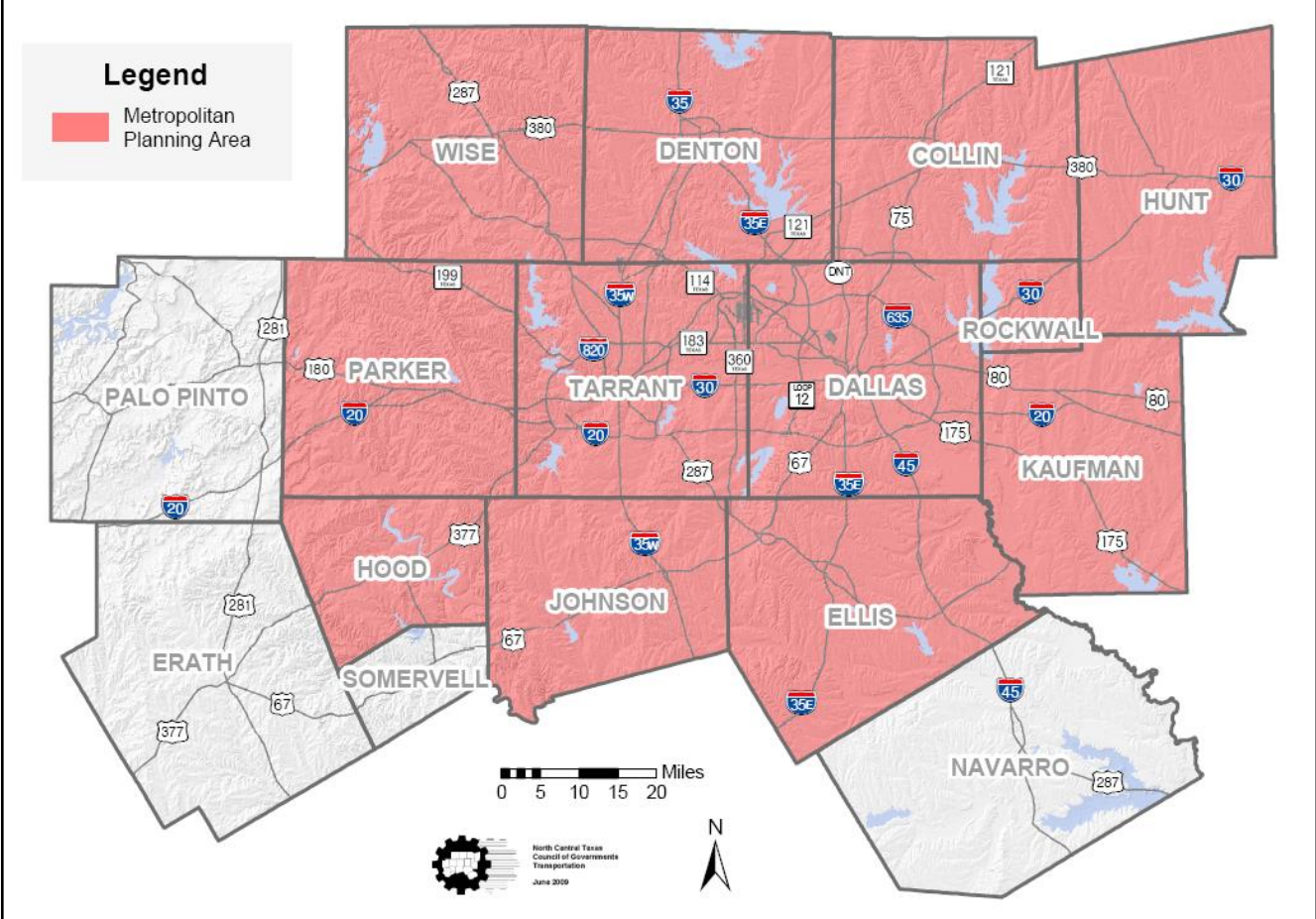
Transportation
Department =
Metropolitan Planning
Organization (MPO)

Federal Transit
Administration (FTA)
Designated Recipient

Multiple Hats



Dallas-Fort Worth Metropolitan Planning Area





DFW MPO GOVERNANCE

Regional Transportation Council (RTC): Created 1974

- Serves as the MPO Policy Body
- Transportation Actions
- Effectiveness
- Equity
- Funding of “Projects and Programs”

NCTCOG Executive Board (Created 1966)

- Efficiency
- Fiduciary Agenda of Department and NCTCOG “Project and Programs”
- Comprehensive Policy Development





Metropolitan Transportation Plan (MTP) –
20-year planning horizon



Transportation Improvement Program
(TIP) – 4-year planning horizon



Unified Planning Work Program (UPWP) –
2-year planning horizon



Congestion Management Process (CMP)
for urban population > 200,000 people

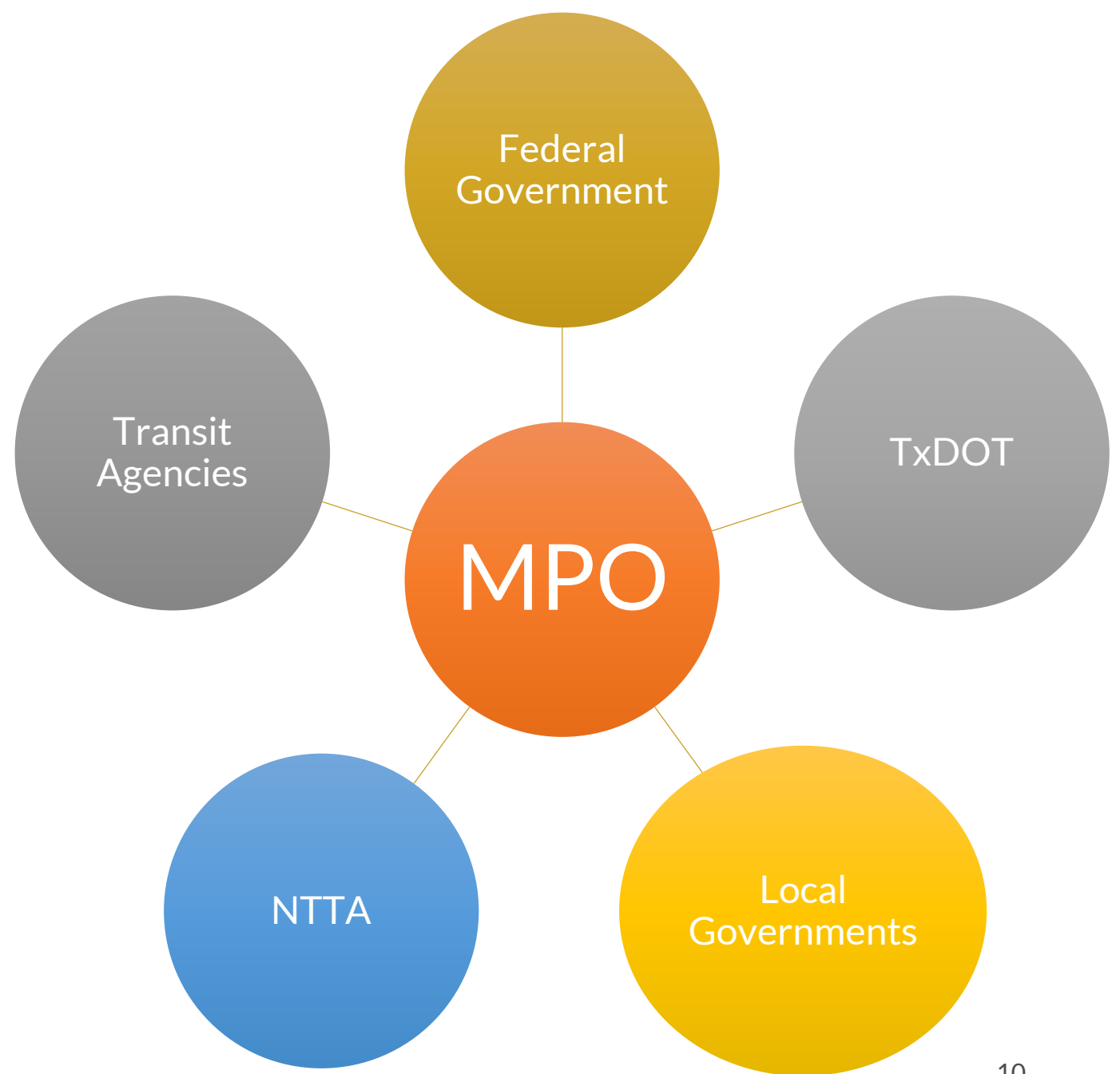


Air Quality Conformity – Clean Air Act
non-attainment areas (ozone)

MPO FUNCTIONS



COORDINATION EFFORTS



BACKGROUND: TRANSIT STUDIES

Request Received from Mesquite in 2019

- Balancing Transportation Needs
- Addressing Equity
- Member/Non-Member Cities Considerations

Transit Studies Based on Common Framework

- *Four* Completed (Collin, S. Dallas, Tarrant, Denton Counties)
- *One* Underway (EDKR Counties)
- *One* Planned (Parker/Western Tarrant Counties)

Common Elements	EDKR
Internal and regional connections	✓
Strategic implementation	✓
Near-term horizon (now to 10 years)	✓
Increase transportation options and innovation	✓
Funding options	✓
Private sector involvement	✓



STUDY PURPOSE

Develop a comprehensive approach to planning and implementing transit services outside of transit authority services areas.



**Implement Near-Term
Strategies**



**Review Transportation
Options**



**Identify Funding
Options**



Project Overview and Study Area



PROJECT OVERVIEW

Timeline:

- 0-5 Years, up to 10 years

Geography:

- Eastern Dallas, Kaufman, Rockwall Counties (Outside of DART service area)

Audience:

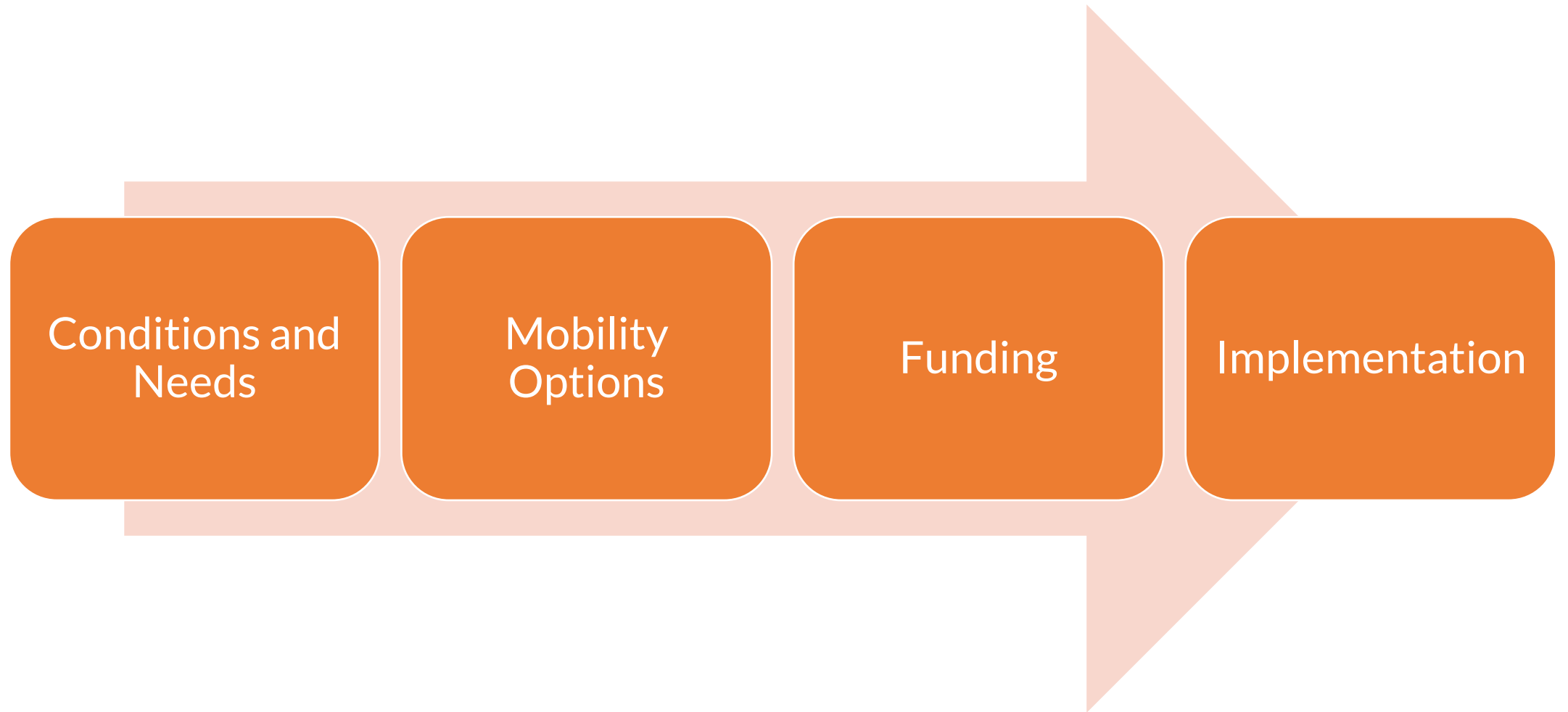
- Municipalities and Transit Agencies

Outcomes:

- Mobility Options and next steps



PROJECT OUTCOMES



Public Meeting #3 Objectives

Provide update on project status



Ensure communication with the Public and stakeholders



Discuss travel patterns and the transit market and needs



Lay out next steps in the project timeline



Share public survey for distribution



Highlight future opportunities to provide input and public engagement



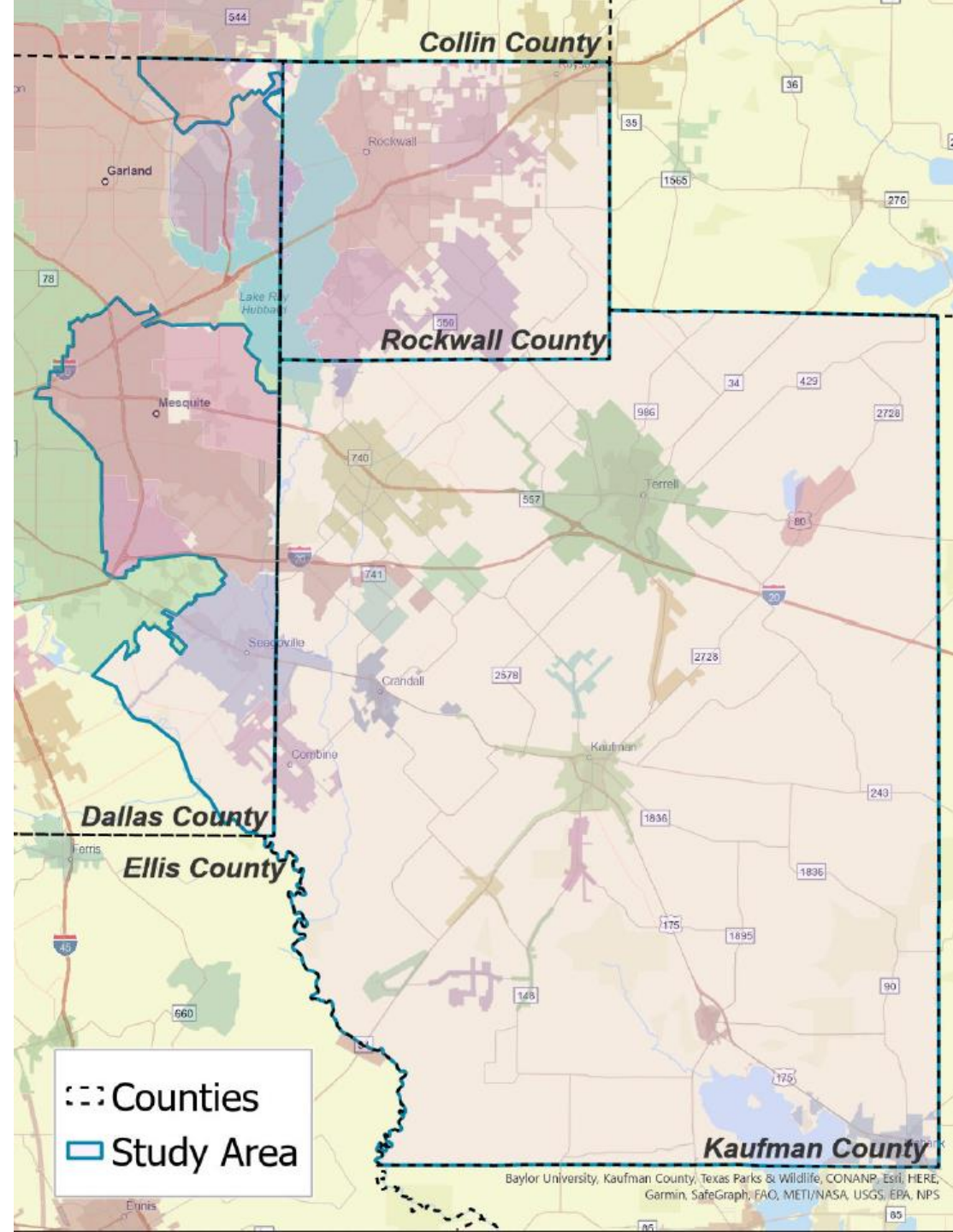
Study Area

Focus Areas

Non-Member Cities

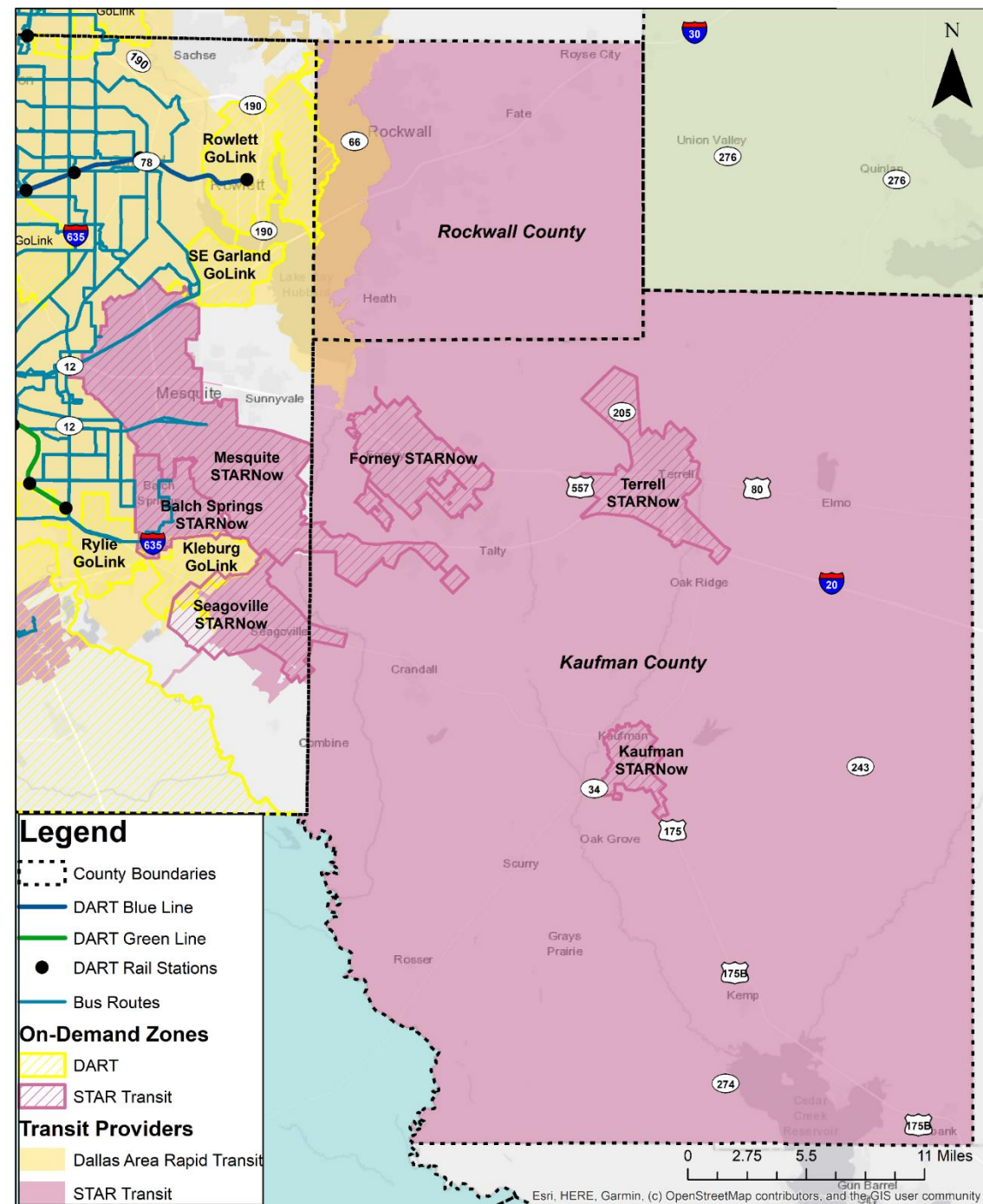
Existing Providers

DART, STAR Transit

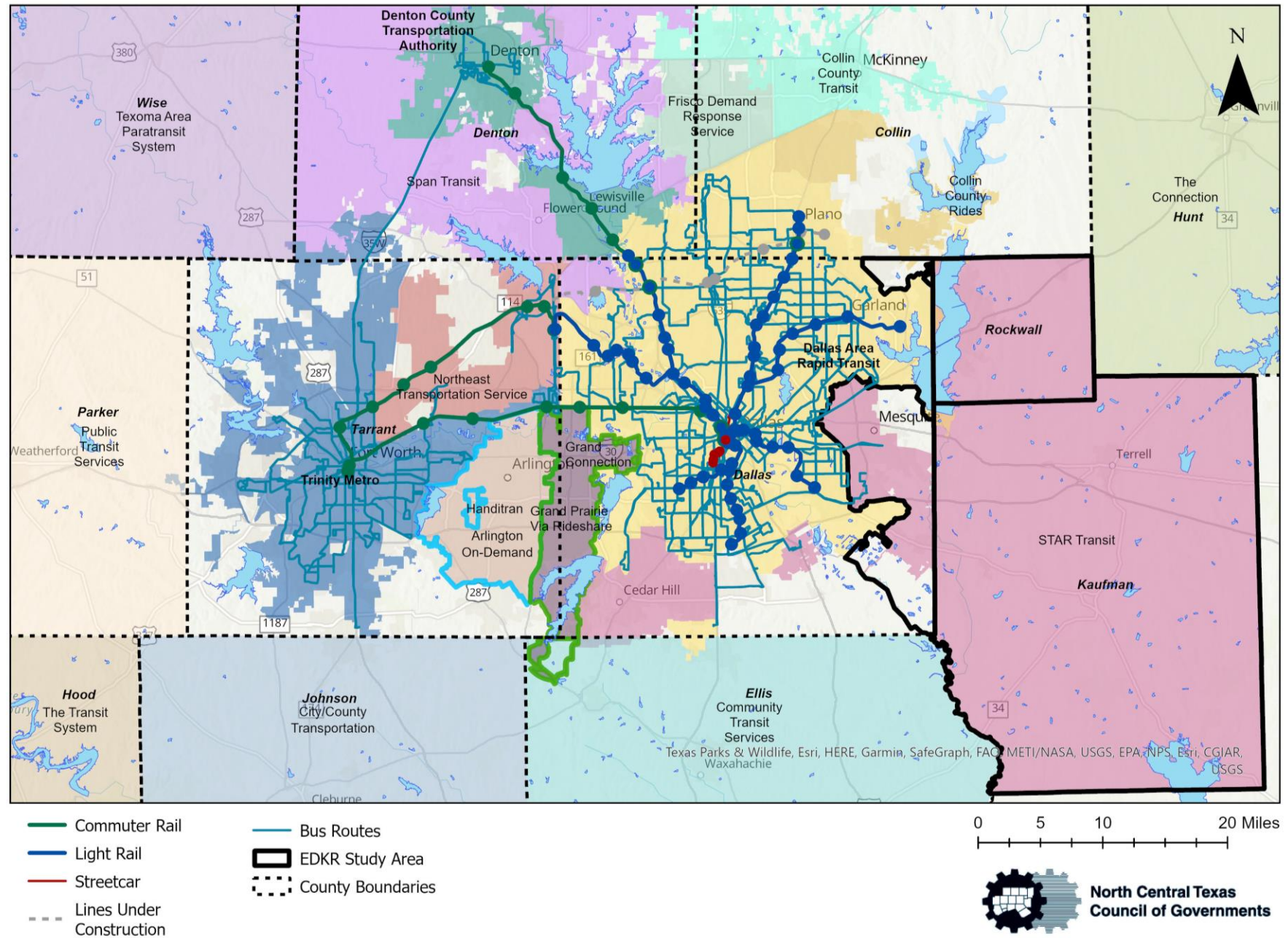


Existing Transit Services

- Fixed-Route Bus
- Light Rail
- On-Demand Transit
- Demand Response
 - Dial-A-Ride/Paratransit offered in most of study area



Regional Transit Services



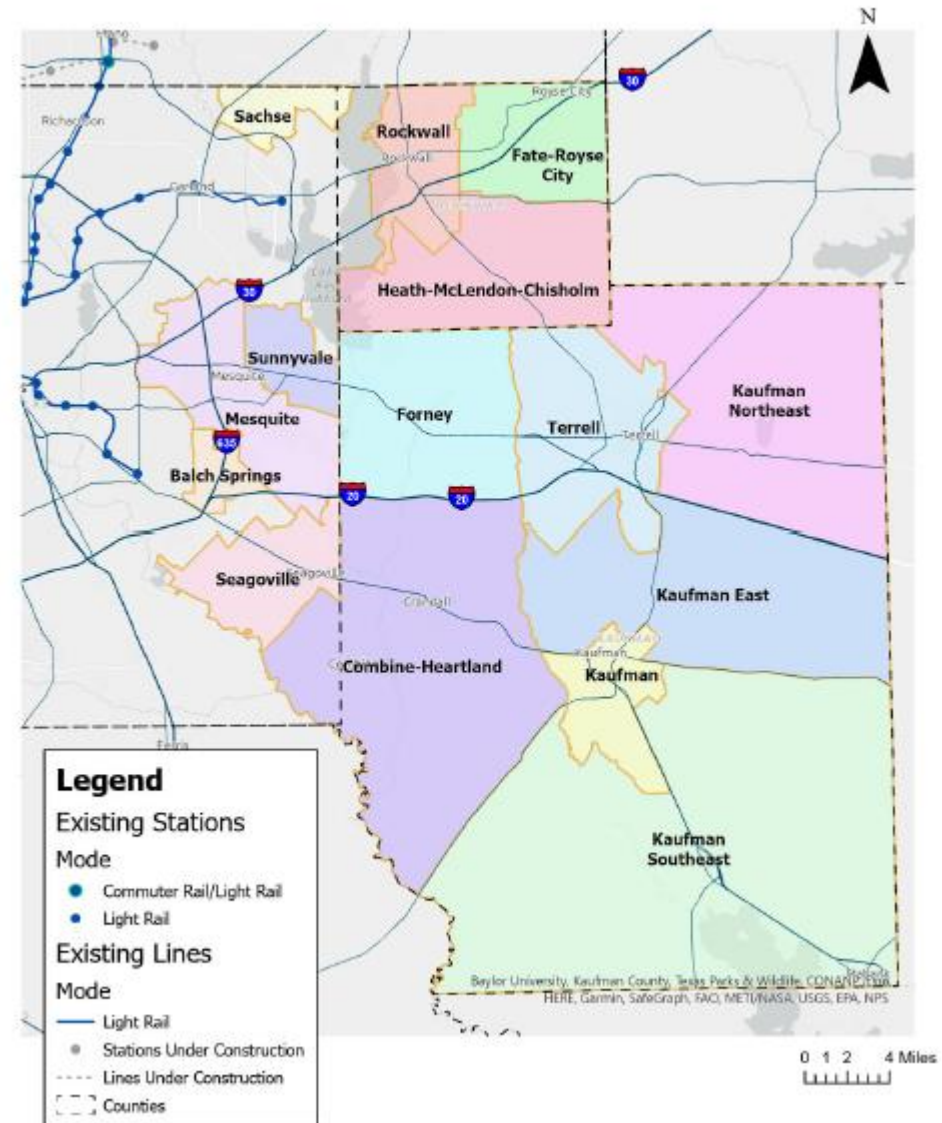
Study Area & Regional Travel Patterns



Location Based Data and Analysis Sectors

- Analysis utilizes Transit Analysis Zones (TAZ) as boundaries within the study area
- TAZ boundaries were drawn using Census Block Groups and population clusters
- Analysis utilizes anonymized Location Based Data (LBS)
- LBS data are collected by GPS applications running either in the background or foreground on smartphones, where the device user has opted to allow access to the app to track the device's geographic location. The data are anonymized so that information cannot be tracked to a particular phone number.

EDKR Study Sectors

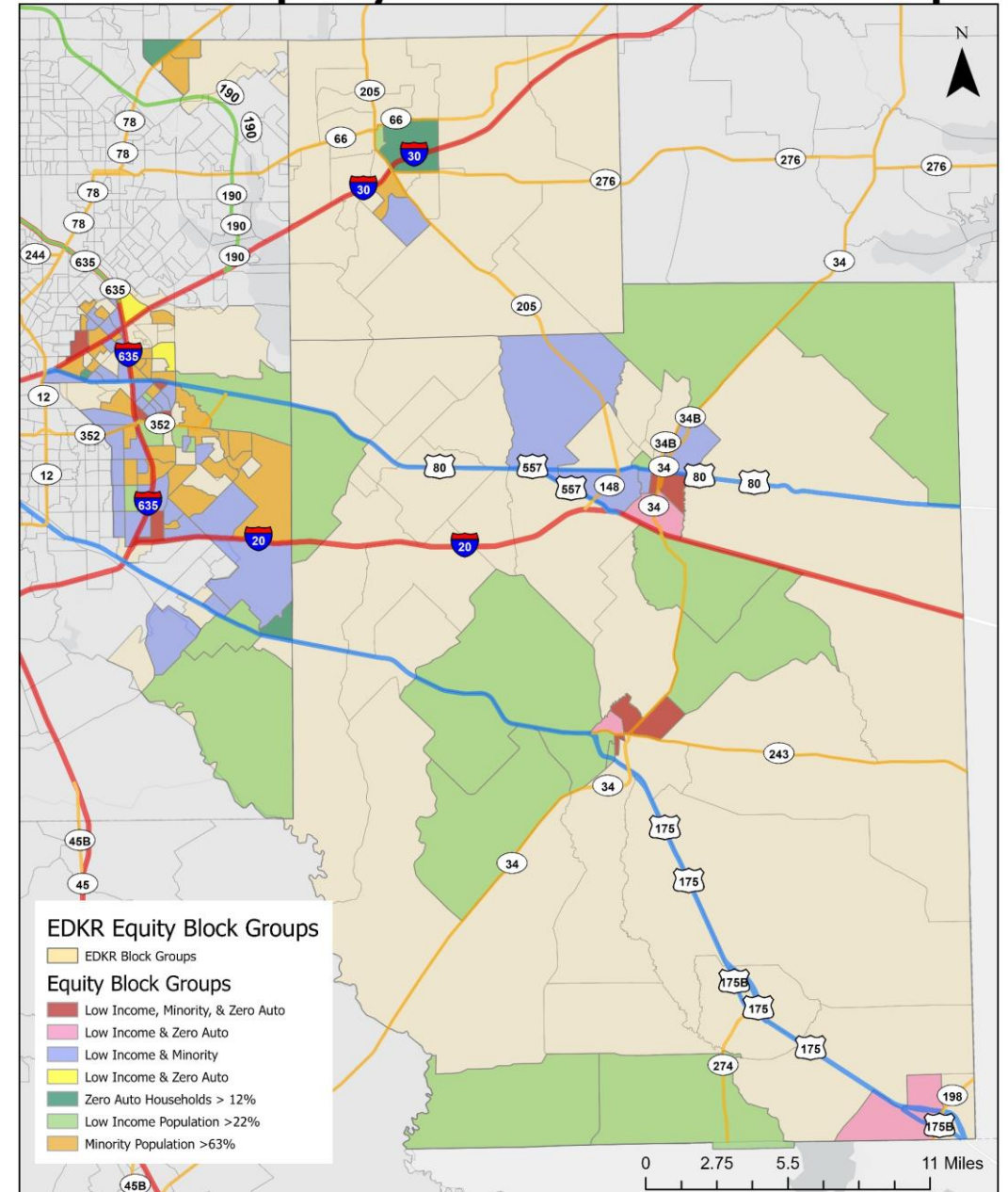


Travel Patterns Analysis Overview

Final report will include the following travel pattern analyses:

- Travel patterns by day, purpose, and distance
- Trip flows by sector
- Equity zone travel patterns
- Intercounty travel patterns

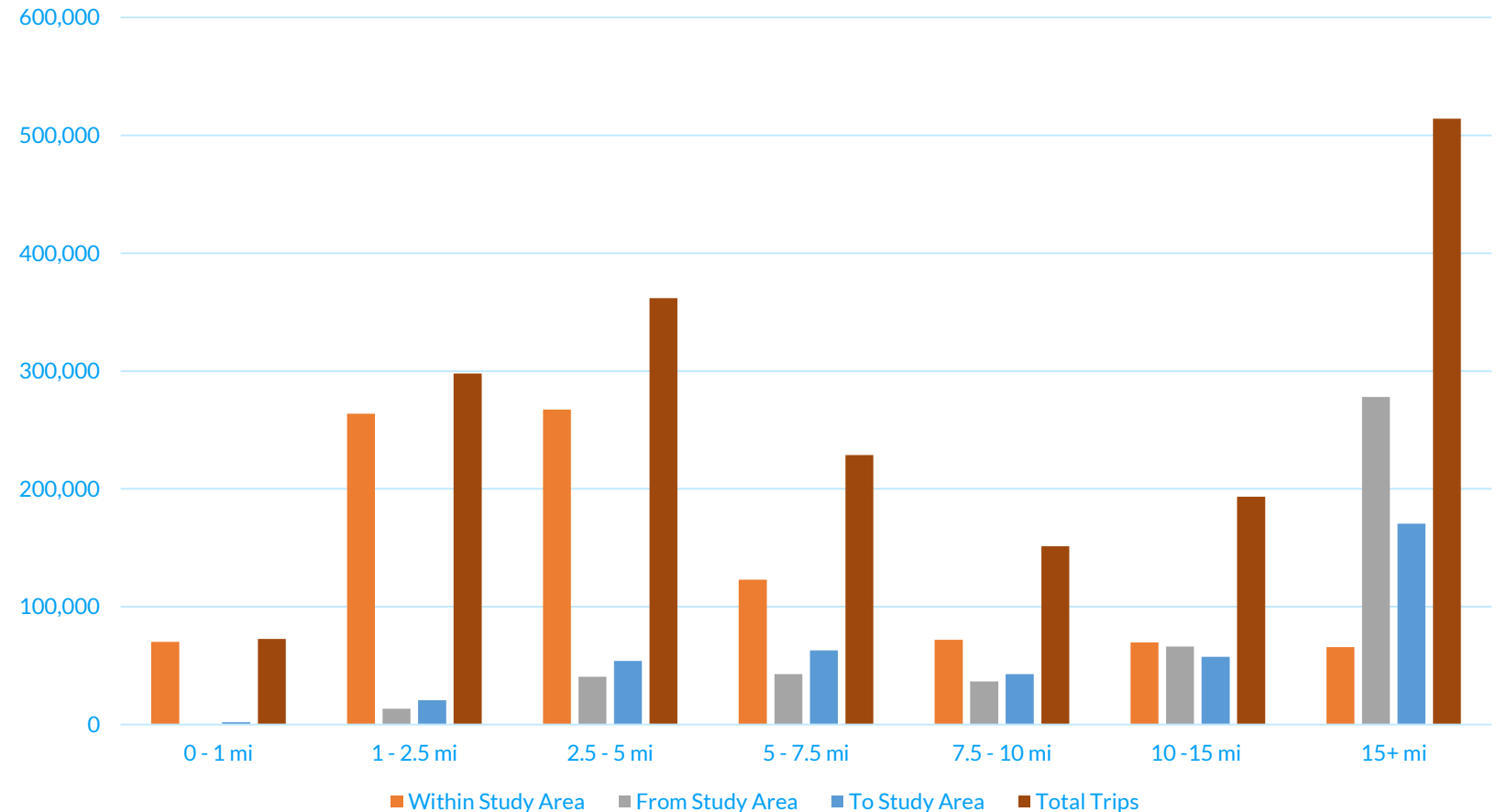
EDKR Equity Zone Block Groups



Weekday Trip Distance Distribution

Weekday Trips By Distance

- Approximately 888,000 1-7.5-mile trips occur within study area daily
- Large portion of trips are to and from the study area and are over 15 miles



Eastern Dallas, Kaufman, and Rockwall Counties Transit Market and Needs



Transit Service Types

EDKR Transit Study Service Type	Purpose	Local Examples
Demand Response	Connects lower-density areas with no fixed-route service; Origin to destination connections	STAR Dial-a-Ride
Mobility On Demand	Connects lower-density areas; First-mile/Last-mile connections	STARNow On-demand



Transit Service Types

EDKR Transit Study Service Type	Purpose	Local Examples
Light Rail	Connects large distances on exclusive right of ways	DART Blue Line and Green Line
Local Fixed-route Bus	Connects medium-density areas for all trip types	STAR Route 101: Balch Springs Midtown Express
Regional Fixed-route Bus	Connects distant destinations and job centers	DART Route 383: Lake Ray Hubbard Express



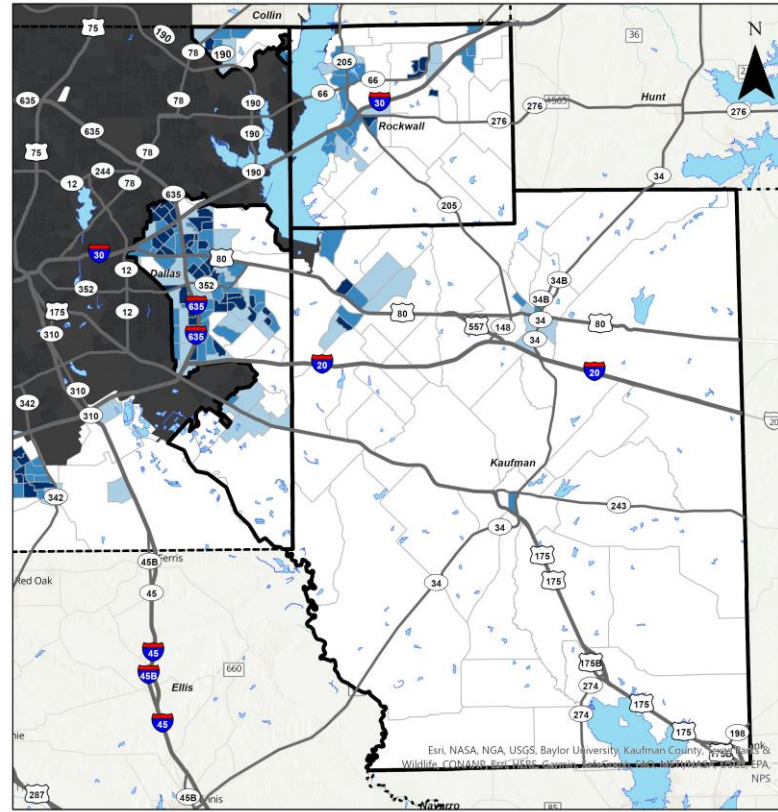
Transit Market And Needs Overview

Understanding existing needs and the potential market for transit is key to developing transit solutions

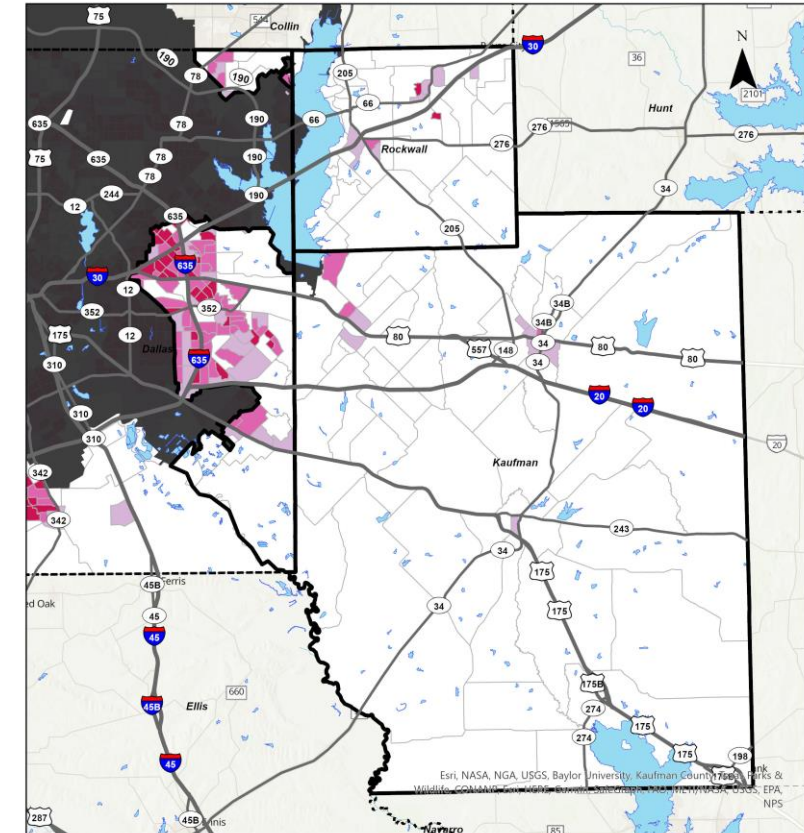
Combines travel pattern data and key population attributes

Sets a foundation for further assessment of transit modes, funding, and service delivery

Population and Employment Density



Equity Population Density

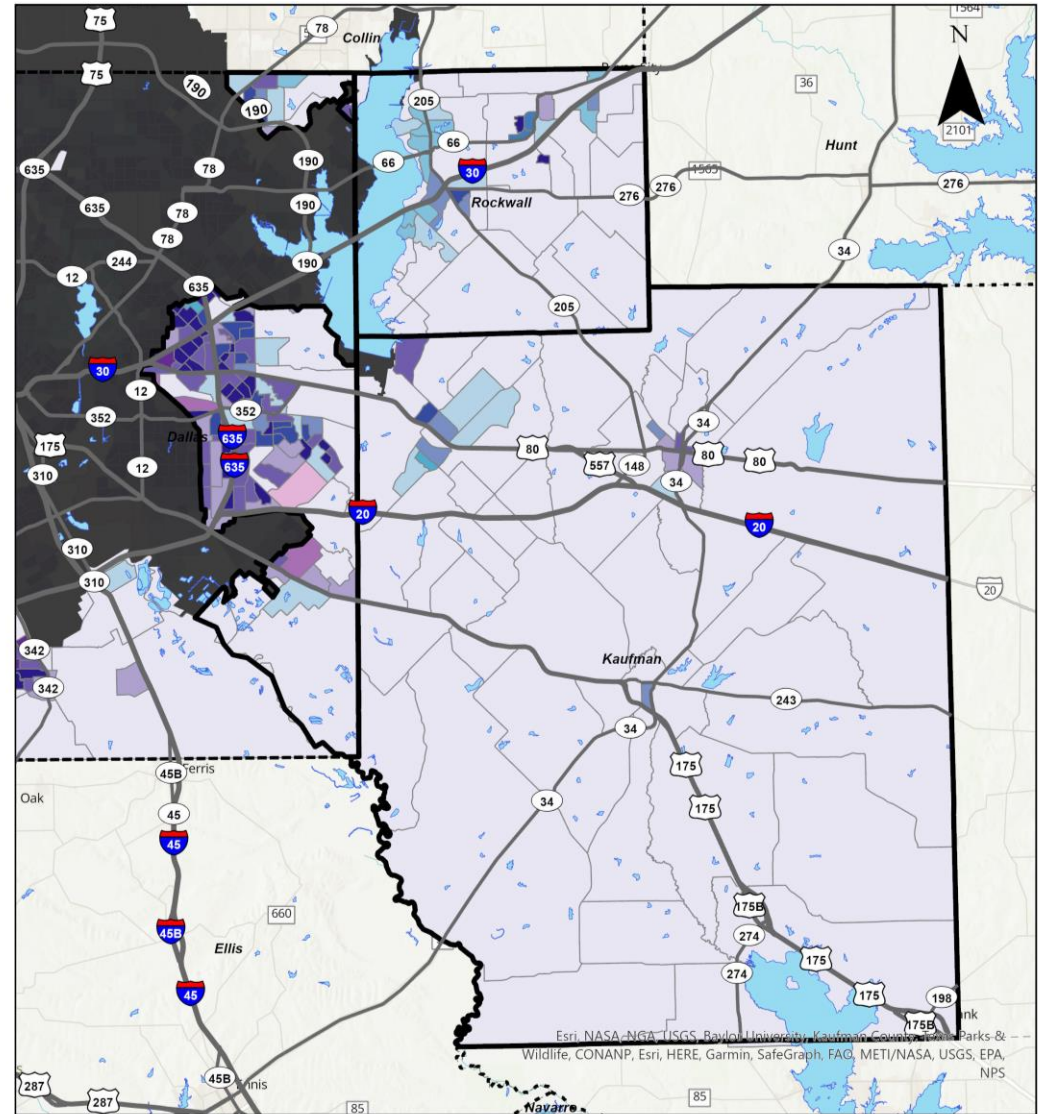


Composite Needs Assessment

Composite Needs Assessment is generated by combining population and jobs density with equity population density

Provides an indicator for the potential transit needs of an area

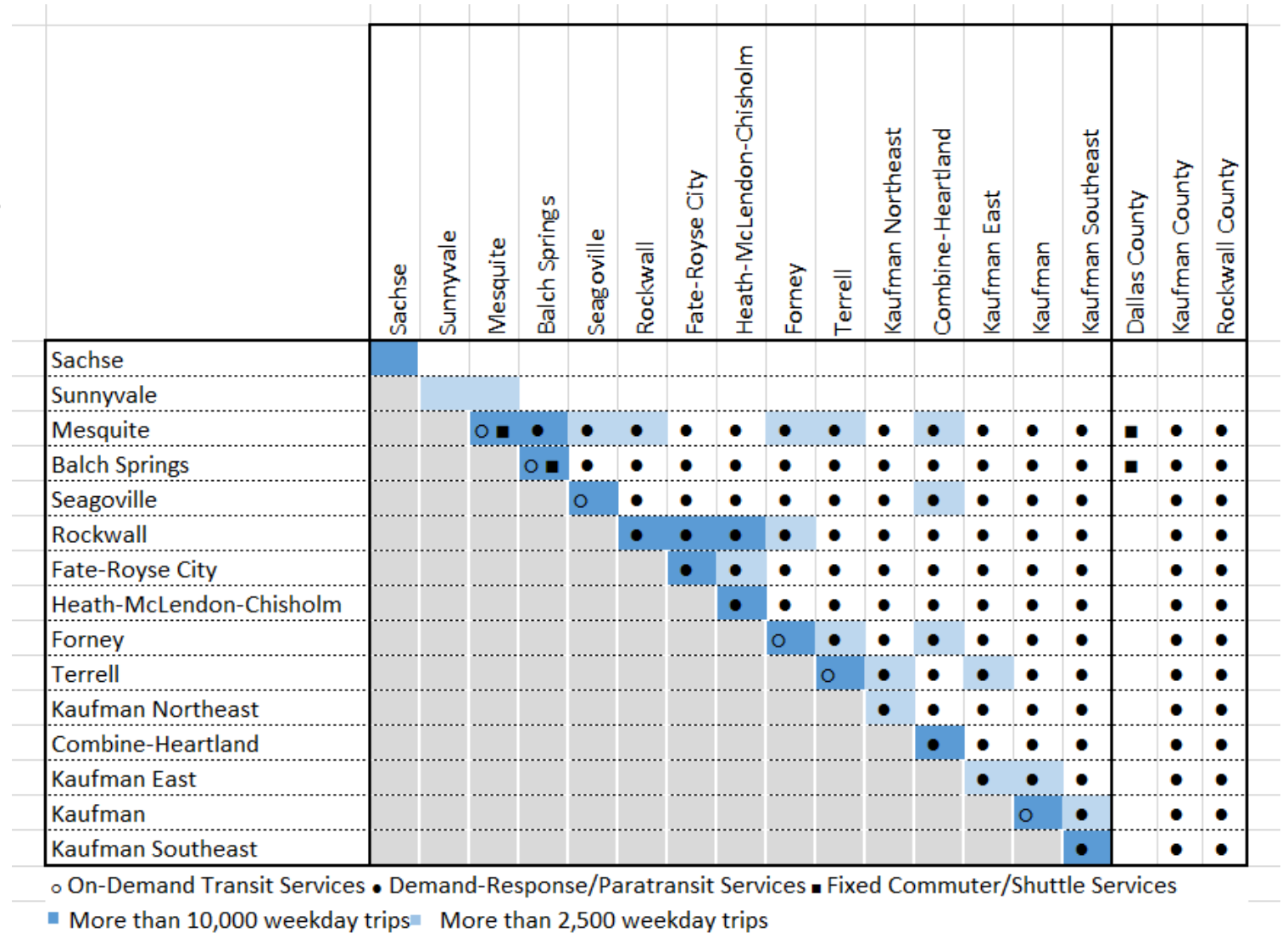
Highlights the existing market for transit in the overall study area and specific cities and sectors



Transit Service Gaps

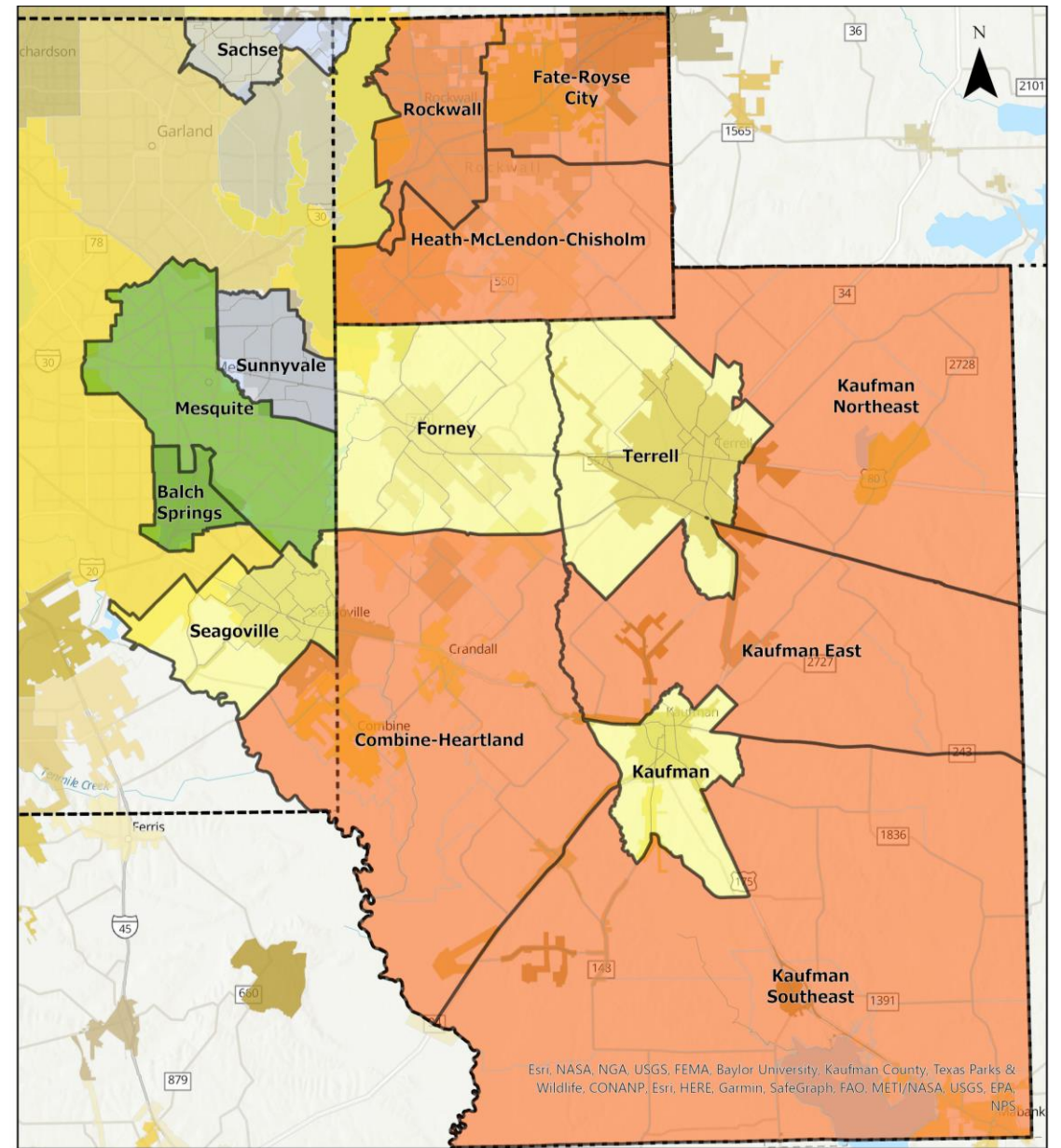
This chart shows the existing transit connections between the analysis sectors and highlights connections with high travel demand

Helps in identifying potential gaps in the context of travel demand



Transit Service Gaps Map

Preliminary analysis shows gaps in both local and regional transit access



Transit Status

- Fixed Commuter Bus/ Shuttle
- On-Demand Transit

- Demand Response/ Paratransit
- None Available

0 2.5 5 10 Miles



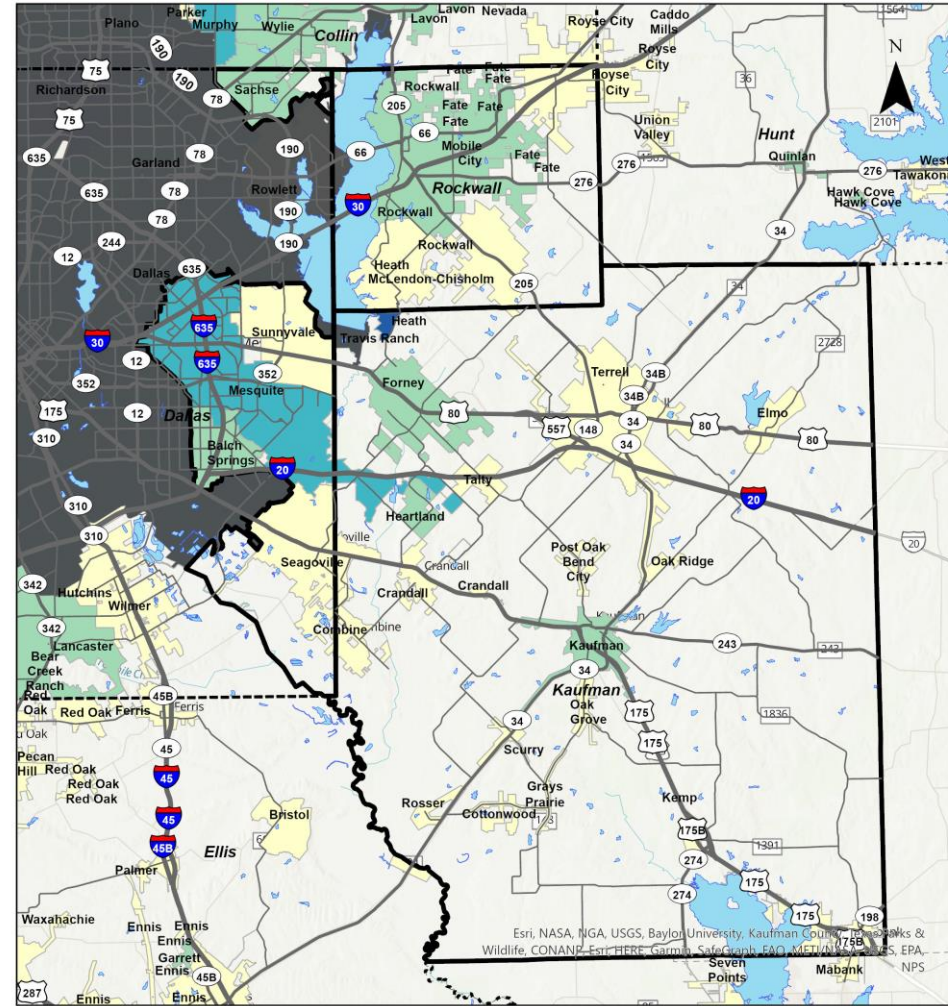
Local Transit Service Needs

Local transit needs at the city or sector level can be determined by combining these analyses

These local transit need areas can then be categorized as High, Medium, and Low Need

Along with the regional transit needs analysis, these local transit need areas will be the foundation for the scenario development process

Population and Employment Density by Municipality



Public Engagement: Input/Facilitation



How You Can Help

STEP 1: Participate tonight

STEP 2: Subscribe for project update emails and to receive the final study reports @ [Eastern Dallas, Kaufman, and Rockwall Counties Transit Study – PublicInput](#)

STEP 3: Take our survey by October 13, 2023: (Links below)

- English: <https://publicinput.com/edkrsurvey>
- Spanish: <https://publicinput.com/edkresp>

STEP 4: Share link with others and let them know how to participate: (QR codes below)

English Survey



Spanish Survey



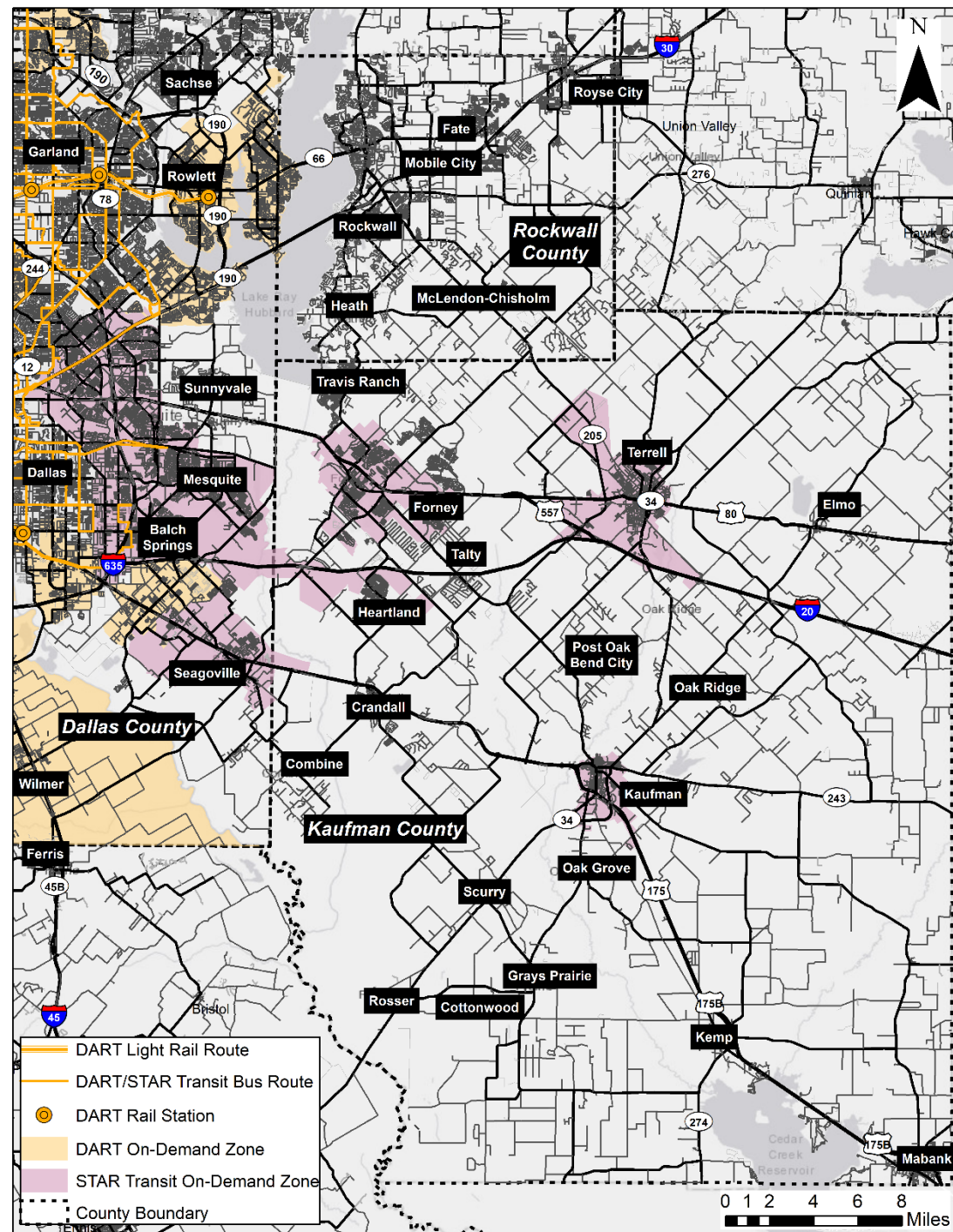
Input Session (30 Minutes)

INSTRUCTIONS

1. We will break out into tabletop groups.
2. Each group will have a facilitator assisting your group.
3. Five key questions will be provided to each table.
4. The facilitator will take notes, and participants are encouraged to provide markings on the map using the stickers and markers.
5. A person from each group will provide a brief report after the 30 minutes. **(time-permitting)**



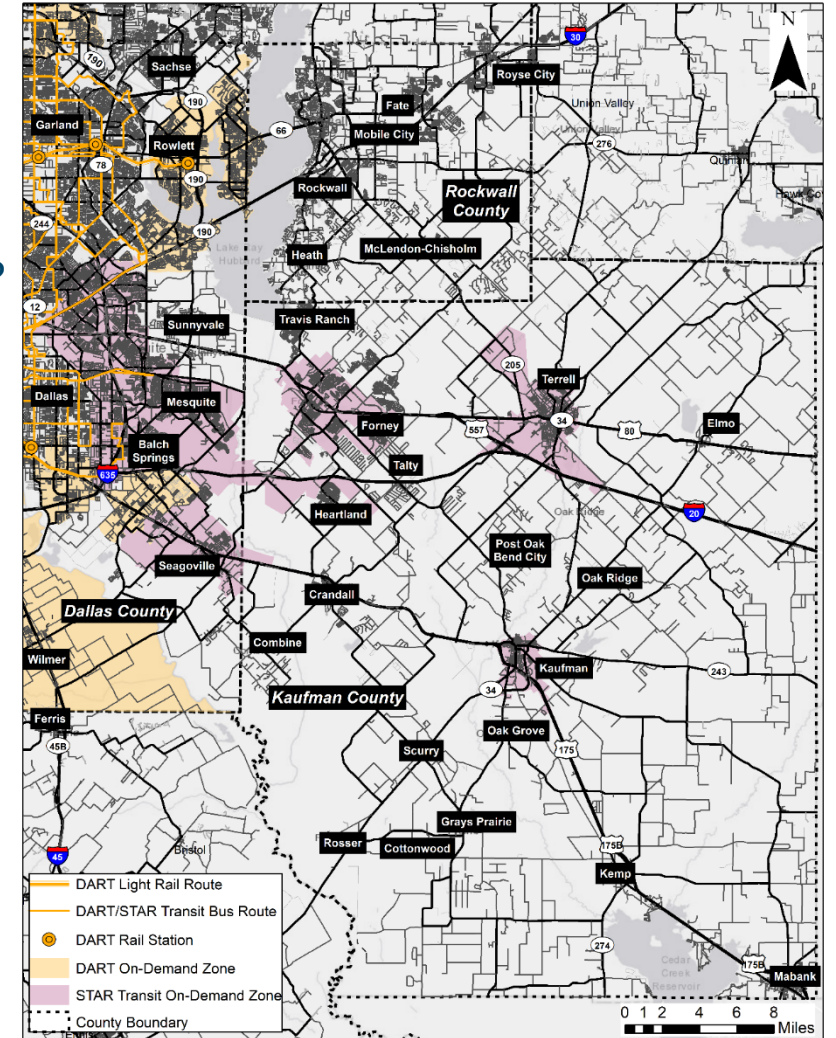
Tabletop Exercise Map



Tabletop Exercise (30 Minutes)

QUESTIONS

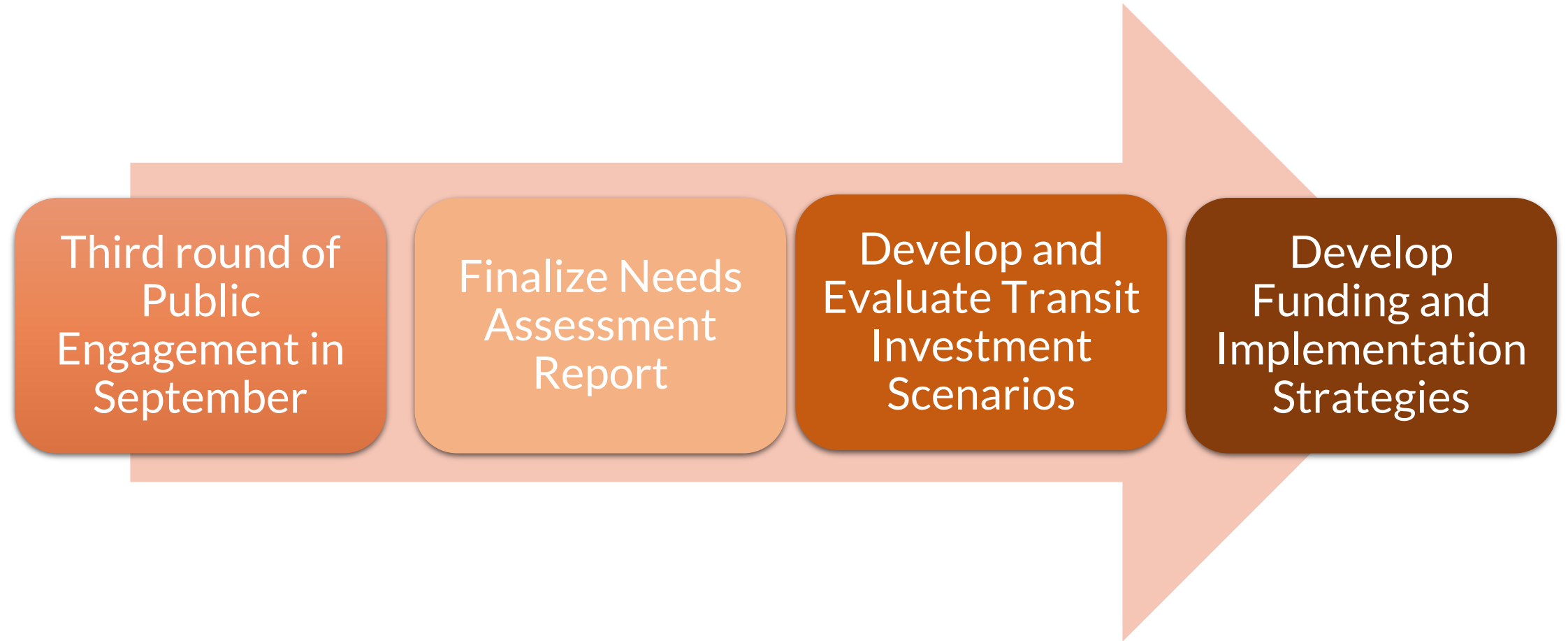
1. How do you usually get to work, school, or other destinations?
2. What are your biggest difficulties in traveling around the region?
3. What are some community hubs or key destinations that you frequently visit, or would like to be able to visit?
4. What would make transit easier to use for you? How can the options be improved?
5. What does our project team need to know about mobility needs in Eastern Dallas, Kaufman, and Rockwall Counties?



Next Steps and Upcoming Schedule



NEXT STEPS



Deliverable Schedule



Estimated Meeting Timeline

PAC Meeting #1 (Kickoff)	• June 27th, 2022
Virtual Public Meeting	• September 19th, 2022
PAC Meeting #2	• January 19th, 2023
In-person Public Meeting #2	• February 28th, 2023 (Rockwall)
PAC Meeting #3	• September 11 th , 2023
In-person Public Meeting #3	• September 26 th , 2023 (Mesquite)
Project Report-outs	• February 2024
Study Complete	• March 2024



Contact

Shannon Stevenson
Senior Program Manager
NCTCOG
sstevenson@nctcog.org

Ezra Pratt, AICP
Senior Transportation Planner
NCTCOG
epratt@nctcog.org

Rebekah Gongora
Communications Manager
NCTCOG
rgongora@nctcog.org

Mike Makris
Transportation Planner II
NCTCOG
mmakris@nctcog.org

Olivia Dugger
Intern
NCTCOG
odugger@nctcog.org

Transit Study Websites
www.nctcog.org/transitstudies

