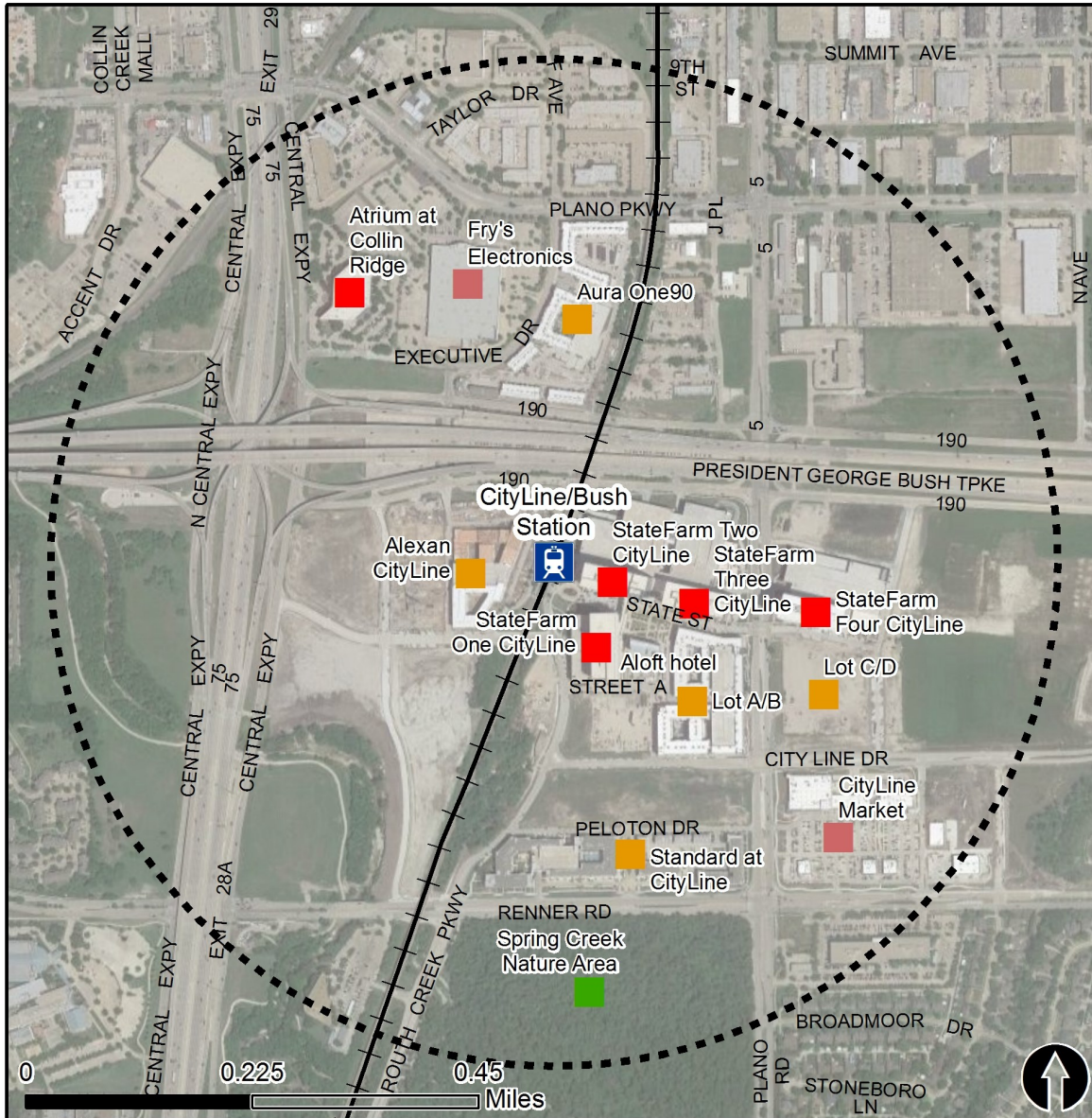


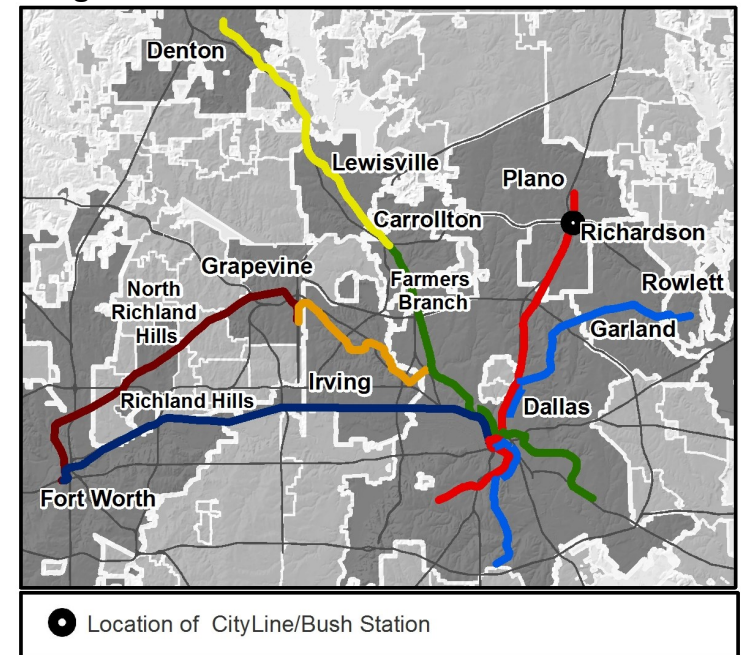
Rail Station Fact Sheet – CityLine/Bush Station



Station Overview

CityLine/Bush Station is located just south of the President George Bush Turnpike and east of US 75 in Richardson. The station opened in 2002 and is served by the DART Rail Red Line and rush hour weekday trips of the Orange Line.

Regional Rail Transit Lines



0.5 Mile
Station Buffer



Rail Stations



Rail Lines

Key Developments



Multi-Family



Office



Recreation



Retail

Rail Station Fact Sheet – CityLine/Bush Station



Station Characteristics¹

Address	1300 E. President George Bush Highway
City	Richardson
Agency	Dallas Area Rapid Transit
Rail Line(s)	Red Line, Orange Line
Corridor	North Central (NC)
Year Opened	2002
Park & Ride Spaces	1,193

Ridership¹

2015 Avg. Weekday	1,282
2015 Avg. Saturday	422
2015 Avg. Sunday	247

2014 On-Board Transit Survey: Access Mode to Station²

Bike	1.6%
Drive Alone	49.1%
Carpool	1.5%
Walk	9.8%
Drop Off	25.3%
Other	0.0%
Transit Transfer	12.7%

Station Area Plans and Studies

Title	Advisory Services Panel Report: A Plan for Transit Oriented Development; Richardson, TX
Publisher	Urban Land Institute
Year	2000
Web Location	http://www.cor.net/todplans

Station Area Characteristics (1/2 mile radius)

Demographics³

Total Population	8,439
Population Density (pop/sq. mile)	1,342
Average Median Age	37
Average Median Income	\$75,888.00

Housing³

Total Housing Units	3,497
Housing Density (units/sq. mile)	556
Percent Occupied	92%
Percent Owner-Occupied	47%
Percent Renter-Occupied	53%

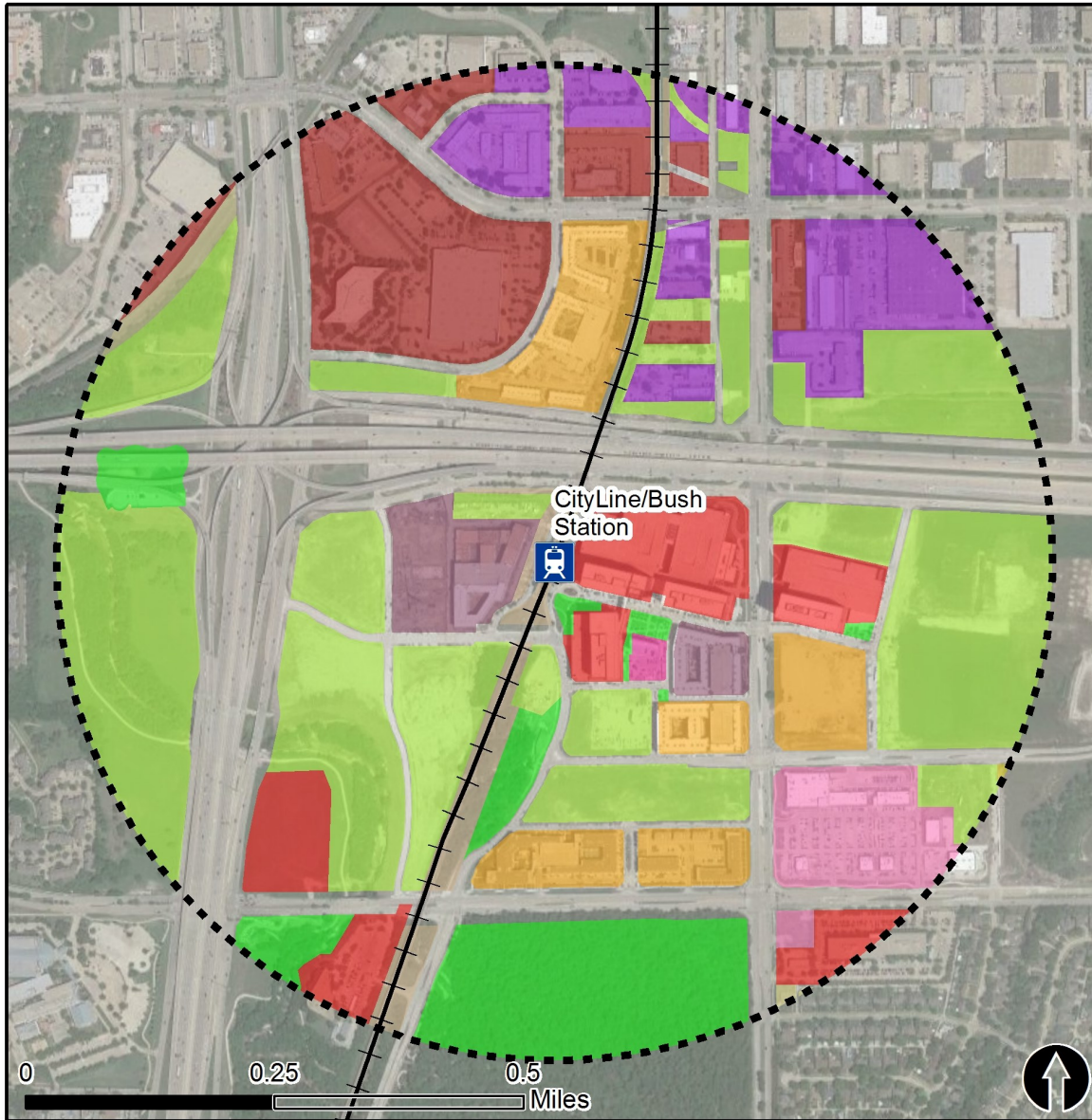
Commute To Work³

Percent Automobile	87.5%
Percent Drive Alone	80.2%
Percent Carpool	7.3%
Percent Transit	1.5%
Percent Bike	0.0%
Percent Walk	1.4%
Percent Other	2.1%
Percent Work from Home	7.4%
Percent Zero-Vehicle Households	3.9%

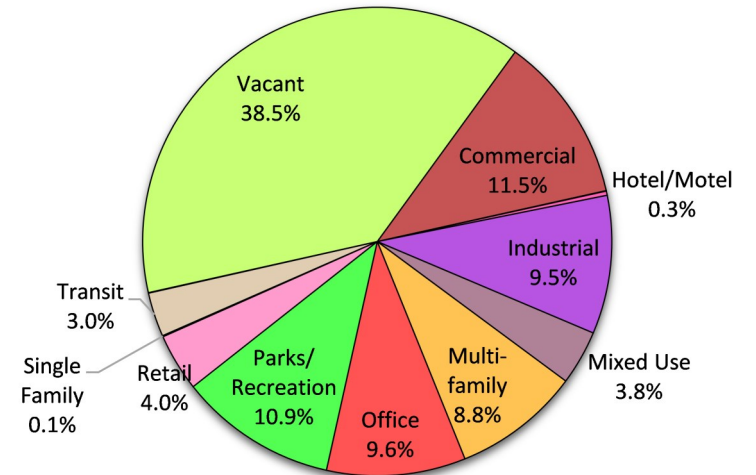
Traffic Survey Zone 2017 Employment Forecast²

Total Jobs	28,327
Job Density (jobs/sq. mile)	6,674

Land Use (2016) – CityLine/Bush Station



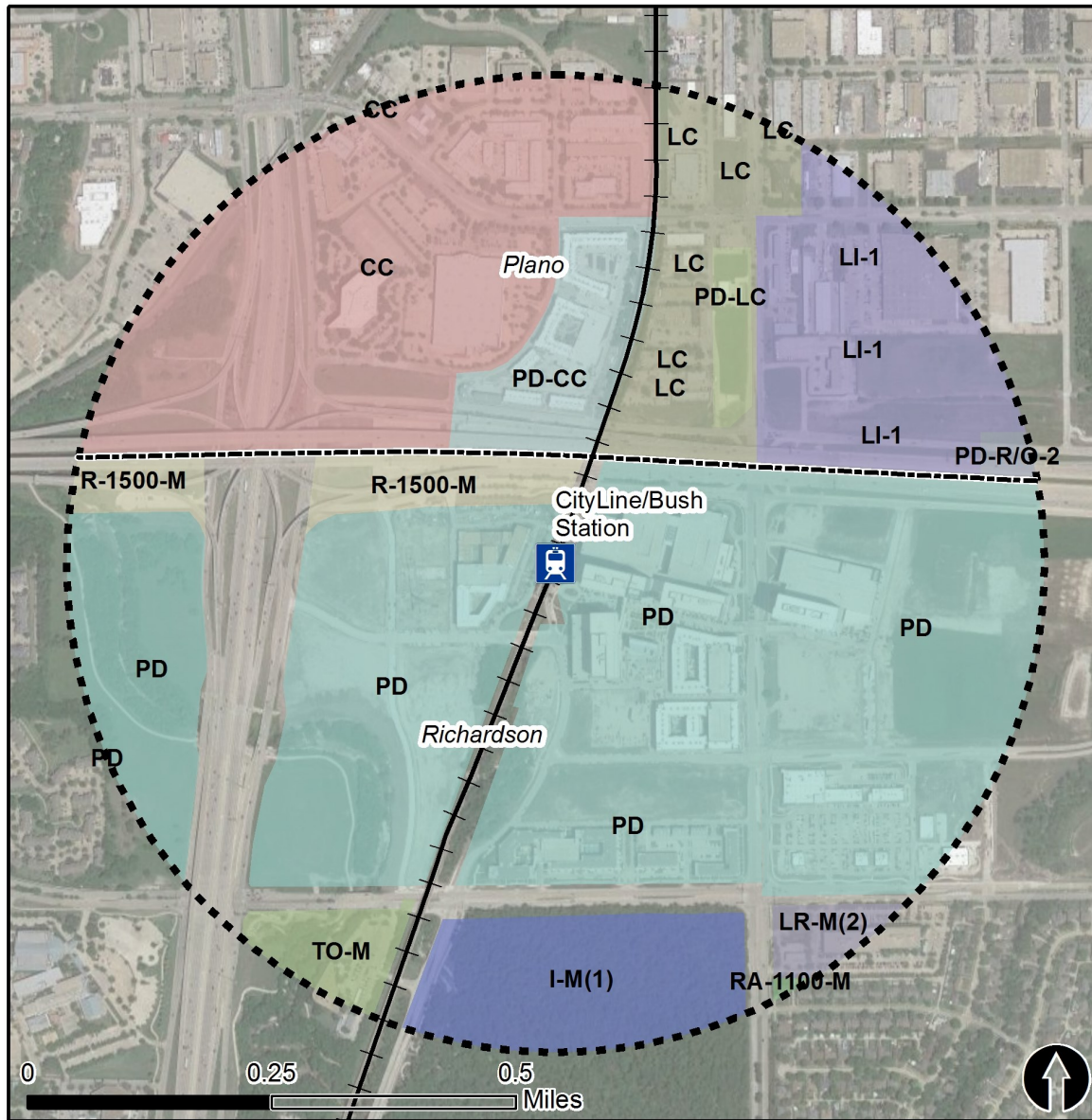
Land Use Percentages



0.5 Mile
Station Buffer

Rail Stations Rail Lines

Zoning (2016) – CityLine/Bush Station



Zoning Districts

Plano

- CC – Corridor Commercial
- LC – Light Commercial
- LI-1 – Light Industrial 1
- PD – Planned Development
- R/O-2 – Retail/General office

Richardson

- I-M(1) – Industrial
- LR-M(2) – Local Retail
- PD – Planned Development
- R-1500-M – Residential
- RA-1100-M – Residential Attached
- TO-M – Technical Office

For more information on zoning, please visit the City of Richardson Planning & Zoning website at:

<https://www.cor.net/index.aspx?page=328>

City of Plano Planning & Zoning website at:

<http://www.plano.gov/1259/Zoning-Ordinance>



0.5 Mile
Station Buffer



Rail Stations —+— Rail Lines

Pedestrian Routes to Rail - CityLine/Bush Station

Last Updated: February 2015



North Central Texas
Council of Governments



Legend



Rail Stations



0.5 Mile
Station Buffer



Railroads



Existing sidewalk facilities within a 0.5
mile walk distance



Existing sidewalk facilities greater
than a 0.5 mile walk distance

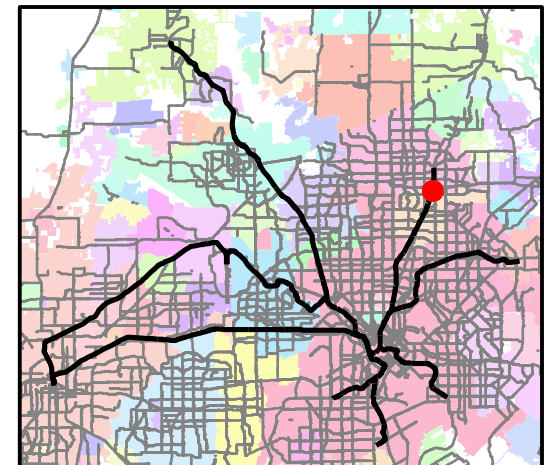


Existing sidewalk facilities that
disconnected due to a gap in the
network

Project Overview

The Pedestrian Routes to Rail study identifies all existing pedestrian facilities within a half-mile radius of existing light rail and commuter rail stations in the Dallas-Fort Worth region based on 2014 data. ArcGIS Network Analyst tool was used to identify continuous facilities that are less than or greater than a half-mile actual walking distance to a station. The maps also reflect existing facilities that are disconnected due to gaps or other barriers not allowing a continuous pedestrian route to a station. The maps do not reflect the condition or ADA compliance of the existing infrastructure. More information on the Routes to Rail study and methodology is available at:

nctcog.org/RoutesToRail

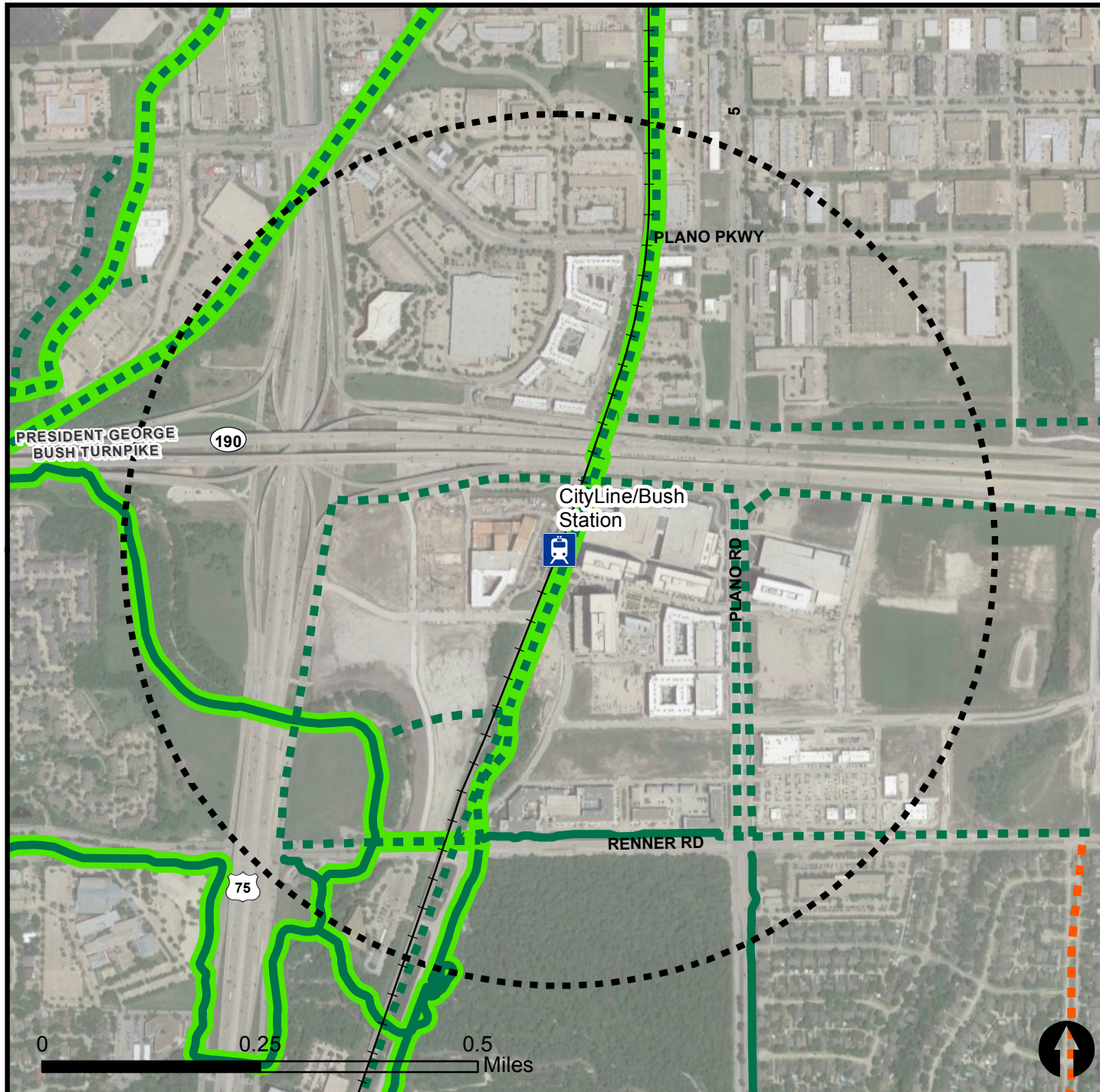


Bicycle Routes to Rail - CityLine/Bush Station

Last Updated: October 2016



North Central Texas
Council of Governments



Legend



Rail Stations



0.5 Mile
Station Buffer



Rail Lines



On-Street Bikeway, Existing



On-Street Bikeway, Planned



2040 Veloweb



Off-Street Path, Existing



Off-Street Path, Planned

Project Overview

The Bicycle Routes to Rail study identifies all existing and planned bikeways in proximity to existing or under-construction light rail and commuter rail stations in the Dallas / Fort Worth region based on 2016 data. The maps reflect off-street paths (trails) and streets designated by local adopted master plans for dedicated bikeways (e.g. bike lanes, cycle tracks) located on the street. In accordance with the Texas Transportation Code, bicyclists have a right to the road. As such, the map does not reflect other roadways around the station that may have signed bike routes or by state law may be used by bicyclists. More information about the Routes to Rail study and methodology is available at:

nctcog.org/RoutesToRail

