

# The Basin–Wide Approach New 303(D) Vision

Addressing Bacterial Impairments in  
Upper Trinity River Watersheds

TEXAS A&M  
**AGRILIFE**  
RESEARCH

# TCEQ Tasking

- ⦿ Implement a *River Basin Approach* for addressing multiple **bacterial** impairments simultaneously

## Project Partners

- ⦿ Texas Institute for Applied Environmental Research (TiAER)
- ⦿ North Central Texas Council of Governments (NCTCOG)
  
- ⦿ Conduct initial outreach to raise awareness in the watershed

# TCEQ Tasking

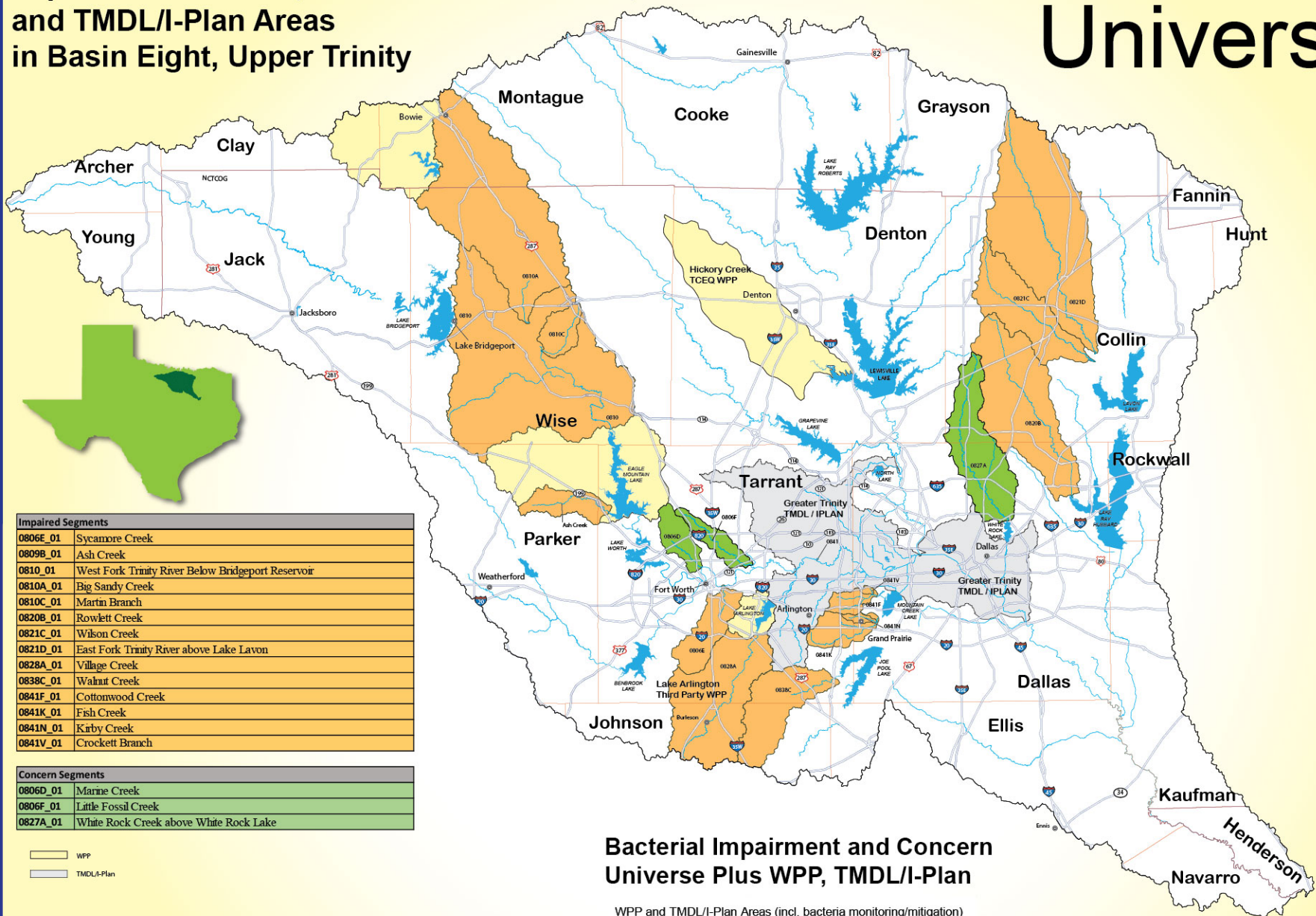
- ⦿ Public Education and Outreach Task
  - ⦿ Facilitating watershed leaders with General Education & Outreach needs across Target Watersheds
  
- ⦿ Summarize Existing Water Quality Data Task
  - ⦿ Collection of known existing data information, & previously developed reports
  - ⦿ Overall assessment of the watershed, its impairments, and potential sources

# Impaired and Concern Segments/ AUs

Impaired Segments		Square miles
0806E_01	Sycamore Creek	37
0809B_01	Ash Creek	27
0810_01	West Fork Trinity River Below Bridgeport Reservoir	309
0810A_01	Big Sandy Creek	228
0810C_01	Martin Branch	21
0820B_01	Rowlett Creek	137
0821C_01	Wilson Creek	76
0821D_01	East Fork Trinity River above Lake Lavon	209
0828A_01	Village Creek	121
0838C_01	Walnut Creek	67
0841F_01	Cottonwood Creek	11
0841K_01	Fish Creek	26
0841N_01	Kirby Creek	3
0841V_01	Crockett Branch	1
	Subtotal	1,275
Concern Segments		
0806D_01	Marine Creek	22
0806F_01	Little Fossil Creek	20
0827A_01	White Rock Creek above White Rock Lake	84
	Subtotal	126
	Watershed total	8,475
	Current tasked acreage	1,401
	Area not currently under study.	7,074

# Universe

## Impaired Subbasins, Subbasins of Concern, and TMDL/I-Plan Areas in Basin Eight, Upper Trinity



Impaired Segments	
0806E_01	Sycamore Creek
0809B_01	Ash Creek
0810_01	West Fork Trinity River Below Bridgeport Reservoir
0810A_01	Big Sandy Creek
0810C_01	Martin Branch
0820B_01	Rowlett Creek
0821C_01	Wilson Creek
0821D_01	East Fork Trinity River above Lake Lavon
0828A_01	Village Creek
0838C_01	Walnut Creek
0841F_01	Cottonwood Creek
0841K_01	Fish Creek
0841N_01	Kirby Creek
0841V_01	Crockett Branch

Concern Segments	
0806D_01	Marine Creek
0806F_01	Little Fossil Creek
0827A_01	White Rock Creek above White Rock Lake

WPP  
 TMDL/I-Plan

### Bacterial Impairment and Concern Universe Plus WPP, TMDL/I-Plan

WPP and TMDL/I-Plan Areas (incl. bacteria monitoring/mitigation)		
Watershed	Type	Square miles
Trinity River Basin "8"	Total Basin	8475
Hickory Creek	Third Party WPP Completed	0
Eagle Mountain Reservoir	Third Party WPP under way	0
Lake Arlington	Third Party WPP under way	0
Greater Trinity Area	TMDL/I-Plan Completed	402
<b>Total Plan Area</b>		<b>402</b>

**Trinity River Basin "Eight", 8475 sq mi.**  
**Dallas/Fort Worth Region**  
 Scale 1:265000  
 1 inch = 6.75 Kilometers

# TARGETS

- ⦿ The extent of areas within the Universe projected to have a TMDL I-Plan, Watershed Protection Plan, or other per year by 2022
- ⦿ **Coordinating Committee** will identify annual commitments in each fiscal year to work toward the 2022 target
- ⦿ The commitments to watershed based plans will be small in the initial years because of the initial work needed for outreach and education so stakeholders can make an informed decision on the approach to be used in their watershed

# Upper Trinity River Basin Eight Score Card Draft 05/17/2015

Listed Stream Segments	Square miles		
<b>Impaired, Plus Concern Watershed Targets</b>		Projected completion	Cumulative percent of Targeted
*Cottonwood Creek (unclassified water body) - 0841F_01	11.5	<b>2016</b>	
**Fish Creek (unclassified water body) - 0841K_01	26.0		
**Kirby Creek (unclassified water body) - 0841N_01	3.1		
*Crockett Branch (unclassified water body) - 0841V_01	1.2		
<b>Subtotal</b>	<b>41.7</b>		<b>3%</b>
***West Fork Trinity River Below Bridgeport Reservoir - 0810_01	309.4	<b>2017</b>	
***Big Sandy Creek (unclassified water body) - 0810A_01	227.8		
***Martin Branch (unclassified water body) - 0810C_01	21.3		
Ash Creek - 0809B_01	26.6		
<b>Subtotal</b>	<b>585.2</b>		<b>45%</b>
Village Creek (unclassified water body) - 0828A_01	121.4	<b>2018</b>	
Walnut Creek (unclassified water body) - 0838C_01	67.3		
<b>Subtotal</b>	<b>188.7</b>		
# Marine Creek (unclassified water body) - 0806D_01	21.9		
# Little Fossil Creek (unclassified water body) - 0806F_01	19.7		
Sycamore Creek (unclassified water body) - 0806E_01	37.1		
<b>Subtotal</b>	<b>78.6</b>		
Rowlett Creek (unclassified water body) - 0820B_01	136.8	<b>2020</b>	
# White Rock Creek above White Rock Lake (unclassified water body) - 0827A_01	84.3		
<b>Subtotal</b>	<b>221.1</b>		
Wilson Creek (unclassified water body) - 0821C_01	76.4	<b>2021</b>	
East Fork Trinity River above Lake Lavon (unclassified water body) - 0821D_01	209.4		
<b>Subtotal</b>	<b>285.8</b>		
		<b>% of Universe</b>	
<b>Targeted</b>	<b>1401.0</b>	<b>16.53%</b>	
<b>Universe total</b>	<b>8475.0</b>	<b>100.00</b>	

## Contact

Larry J. Beran, PhD

Senior Research Scientist

Texas A&M AgriLife Research and Extension Center - Stephenville

Texas A&M AgriLife Research

1229 North US Highway 281 | Stephenville, Texas 76401

p: (254) 968-4144 Ext 230 | c: (254) 592-6059 | f: (254) 965-3759

[lberan@ag.tamu.edu](mailto:lberan@ag.tamu.edu)