

# Illicit Discharge Tracking

Presented by Karla Marquez

# Fort Worth Dry Weather Program Background

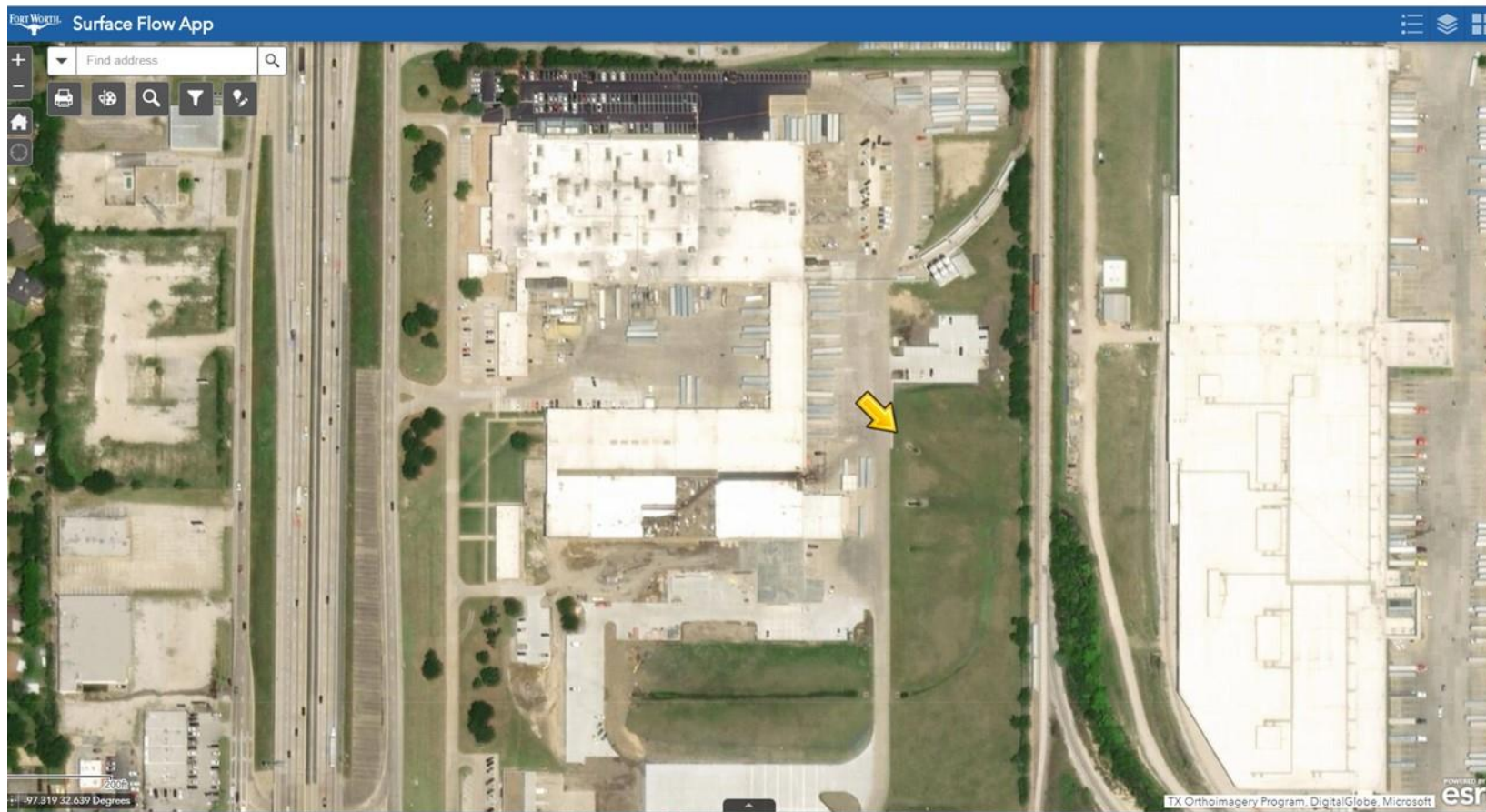
- The City of Fort Worth samples all major outfalls
- Major outfalls are those that are: 36” or greater, or are greater than 12” if located in industrial areas
- High priority outfalls are inspected twice per permit cycle

# Routine Dry Weather Field Screening

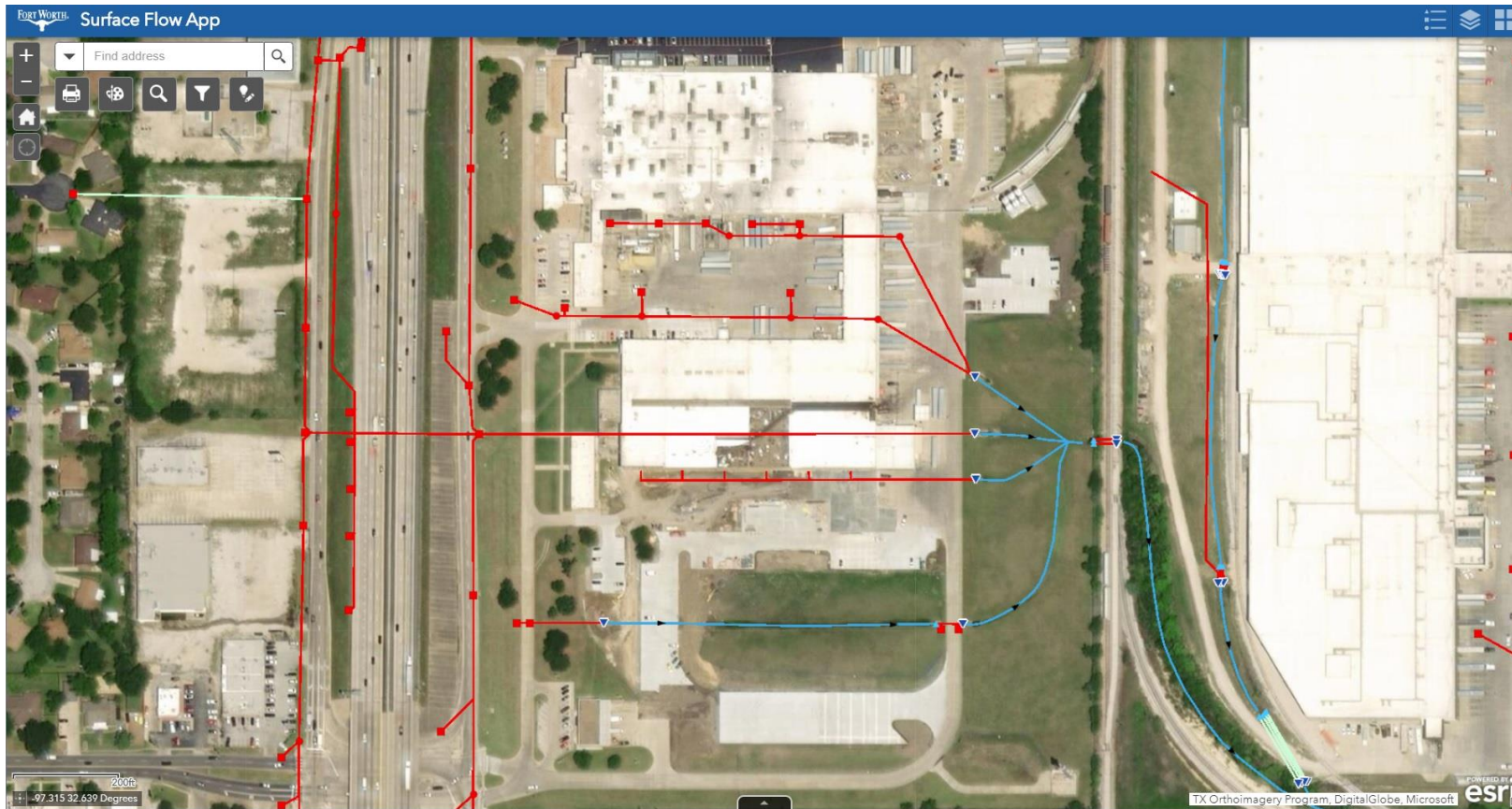
- Parameter Readings: 1<sup>st</sup> Visit
  - pH 5.55 s.u.
  - Conductivity 190  $\mu$ S
  - Ammonia/Nitrogen 4.44\*
- Parameter Readings 2<sup>nd</sup> Visit
  - pH 6.03 s.u.
  - Conductivity 240  $\mu$ S
  - Ammonia/Nitrogen 3.56
  - Cu: 0.49ppm/0.44ppm\*\*



# Location of Discharge



# Lines tying to Outfall



# 8/15/19 Follow-up



# 8/19/19 Follow-up



# 8/21/2019 Follow-up



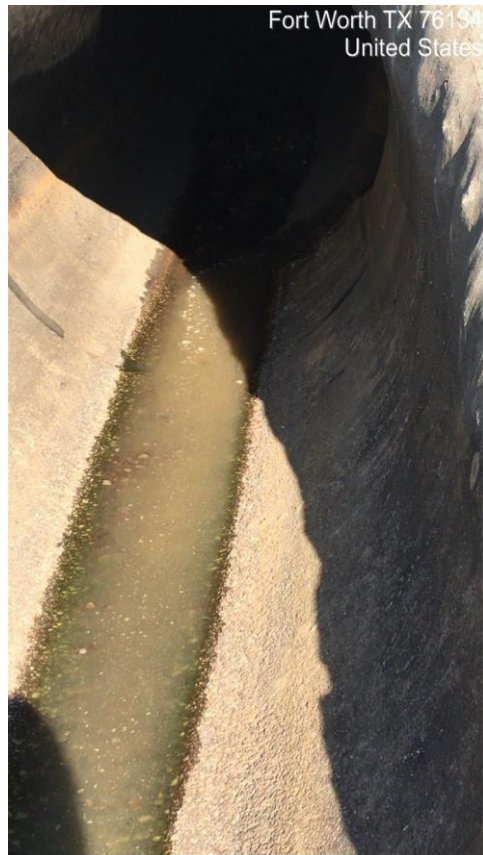


# 8/26/19 Follow-up





# 9/4/2019 Follow-up



# 9/12/19 Follow-up



## In Conclusion

- Illicit discharge was tracked back to the industrial baking facility
- Worked with the facility representative to resolve discharge
- Facility made several repairs and tied off line that was discharging into the Outfall
- Facility was moved up in the industrial inspection queue

# Thank you

Karla Marquez

Senior Environmental Specialist

Office Phone: 817-392-8136

Email: [karla.marquez@fortworthtexas.gov](mailto:karla.marquez@fortworthtexas.gov)

Cathy Matthews

Senior Environmental Specialist

Office Phone: 817-392-5440

Email: [cathy.matthews@fortworthtexas.gov](mailto:cathy.matthews@fortworthtexas.gov)

