A photograph showing a person's hand holding a piece of bread, which a mallard duck is pecking at. Several other ducks are visible in the water around the pond's edge. The water is greenish, suggesting algae or pollution.

Negative Impacts of Feeding Waterfowl

TEXAS
PARKS &
WILDLIFE

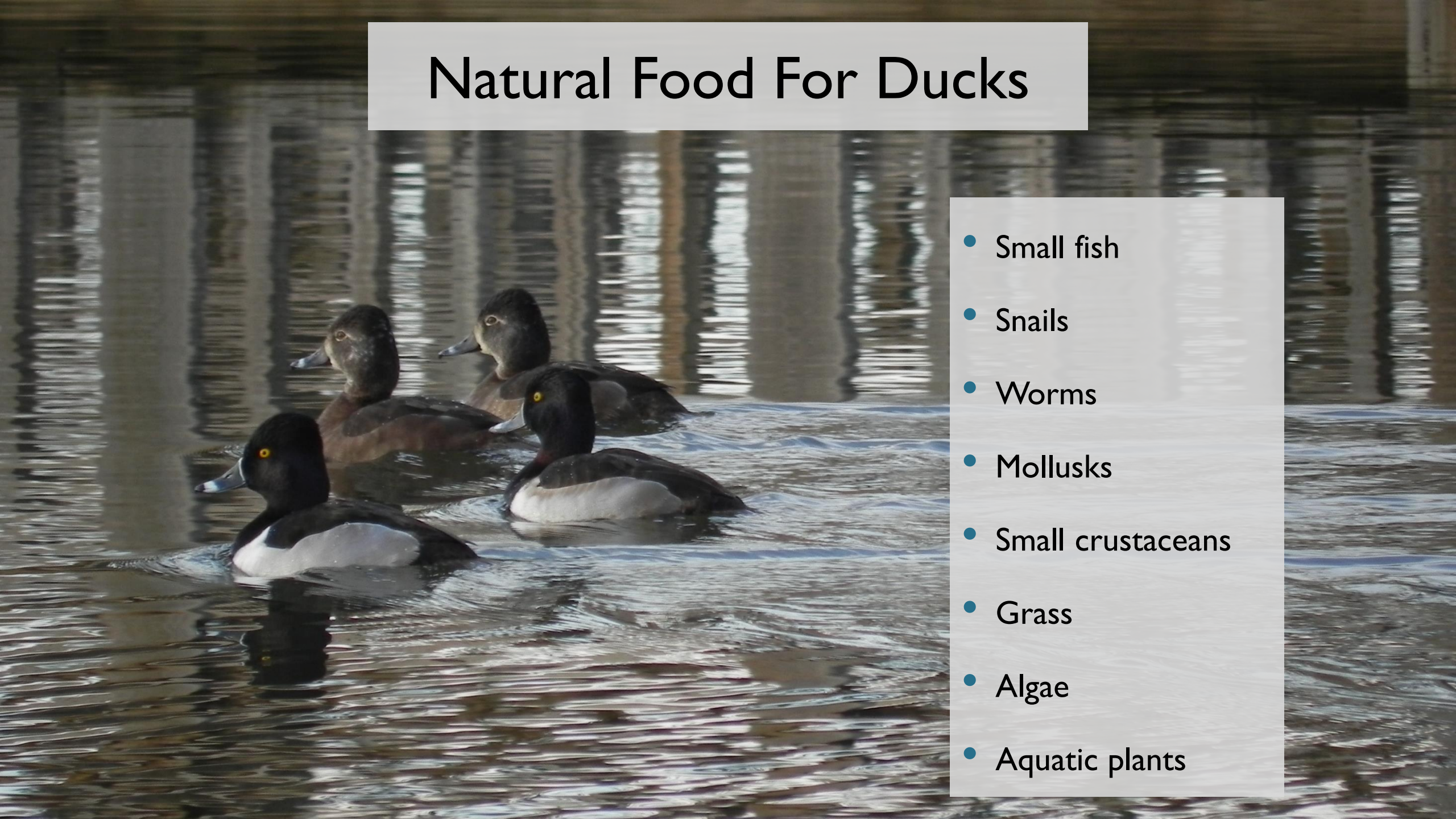
Rachel Richter
Urban Wildlife Biologist
Texas Parks and Wildlife

Ducks and geese should NOT eat...



Natural Food For Ducks

- Small fish
- Snails
- Worms
- Mollusks
- Small crustaceans
- Grass
- Algae
- Aquatic plants



Human food is not
healthy for wildlife



Increased Disease Spread



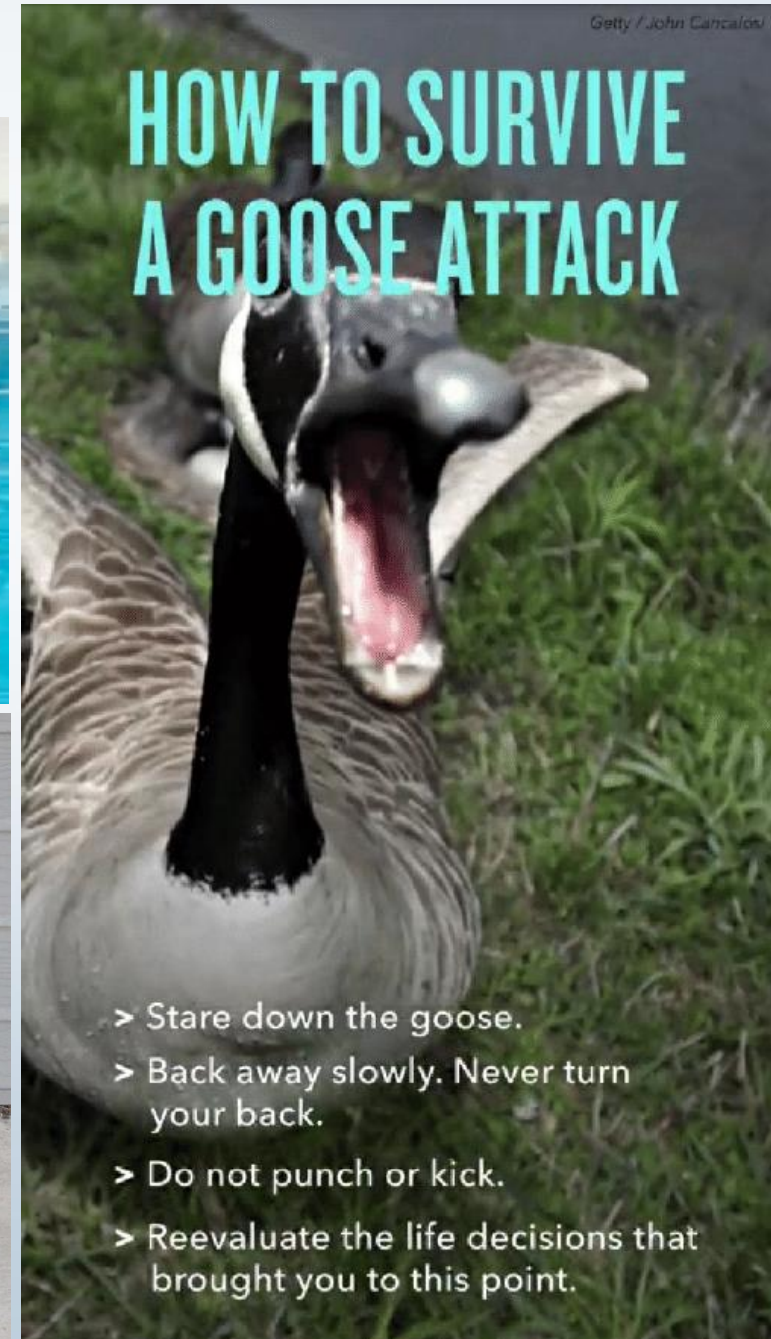
Habituation



Photo Credit: Birdies100



Photo Credit: pbyrne



Getty / John Cancalosi

HOW TO SURVIVE A GOOSE ATTACK

- > Stare down the goose.
- > Back away slowly. Never turn your back.
- > Do not punch or kick.
- > Reevaluate the life decisions that brought you to this point.

Invasive Species



Non-target Species



Habitat Degradation



Water Quality



Photo Credit: KSAN



Management Options

- Outreach and education
- Feeding ordinances



But what about “healthy” foods?



Management Options for Non-native Waterfowl

- No state regulations for non-native waterfowl
- Oiling or addling eggs
- Trap and remove



Alternatives

- Birdwatching
- Contribute to citizen science projects
 - iNaturalist, eBird
- Photography
- Learn about wildlife
- Improve your local park



Promote Healthy Habitats



Questions?

TEXAS
PARKS &
WILDLIFE

Rachel Richter
Urban Wildlife Biologist
Texas Parks and Wildlife