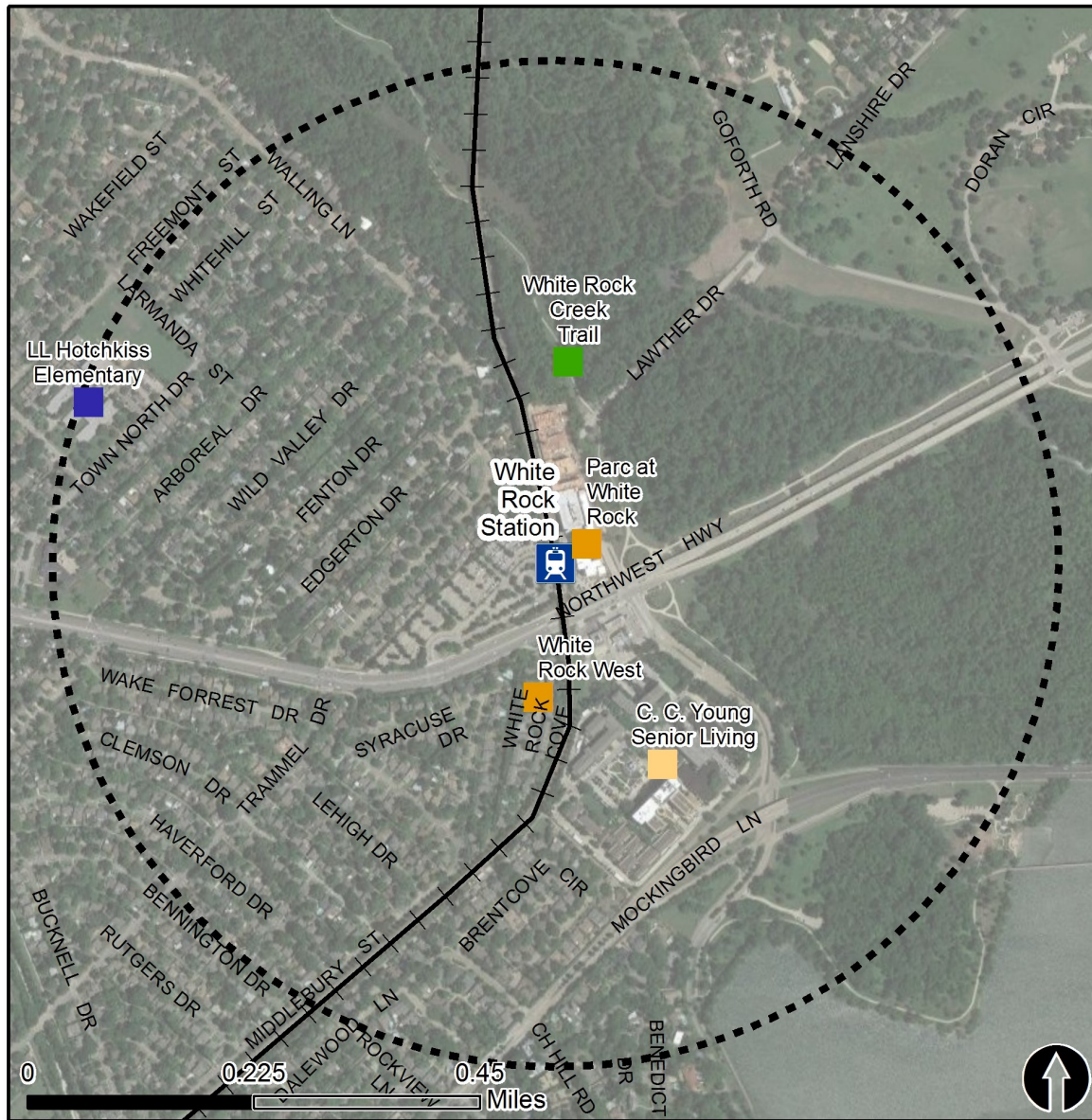


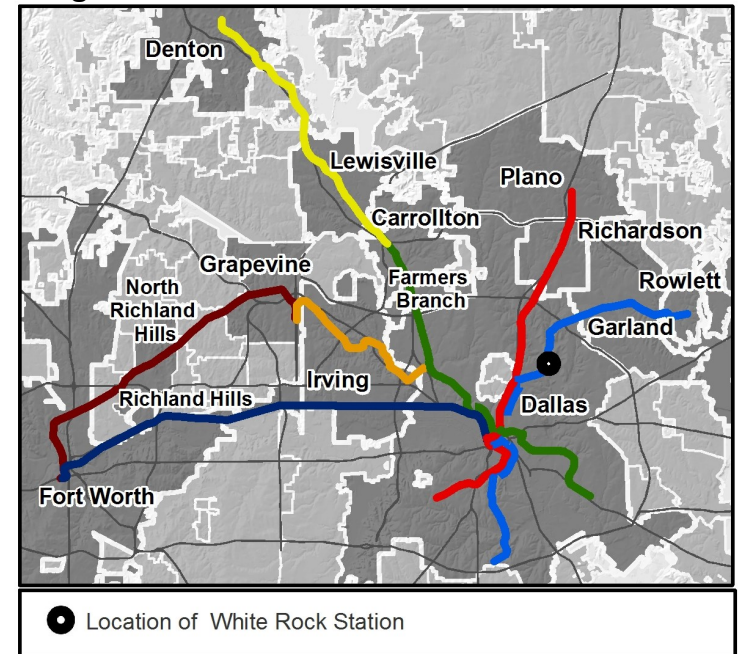
Rail Station Fact Sheet – White Rock Station



Station Overview

White Rock Station is located on Northwest Highway near West Lawther Drive. The station opened in 2001 and is served by the DART Rail Blue Line.

Regional Rail Transit Lines



0.5 Mile
Station Buffer



Rail Stations



Rail Lines

Key Developments



Education



Group Quarters



Multi-Family



Recreation

Rail Station Fact Sheet – White Rock Station



Station Characteristics¹

Address	7333 E. Northwest Highway
City	Dallas
Agency	Dallas Area Rapid Transit
Rail Line(s)	Blue Line
Corridor	Northeast (NE)
Year Opened	2001
Park & Ride Spaces	496

Ridership¹

2015 Avg. Weekday	663
2015 Avg. Saturday	308
2015 Avg. Sunday	206

2014 On-Board Transit Survey: Access Mode to Station²

Bike	5.0%
Drive Alone	25.6%
Carpool	2.8%
Walk	30.4%
Drop Off	25.4%
Other	0.0%
Transit Transfer	10.8%

Station Area Plans and Studies

Title	
Publisher	
Year	
Web Location	

Station Area Characteristics (1/2 mile radius)

Demographics³

Total Population	7,435
Population Density (pop/sq. mile)	2,258
Average Median Age	45
Average Median Income	\$92,526.00

Housing³

Total Housing Units	3,653
Housing Density (units/sq. mile)	1,109
Percent Occupied	96%
Percent Owner-Occupied	80%
Percent Renter-Occupied	20%

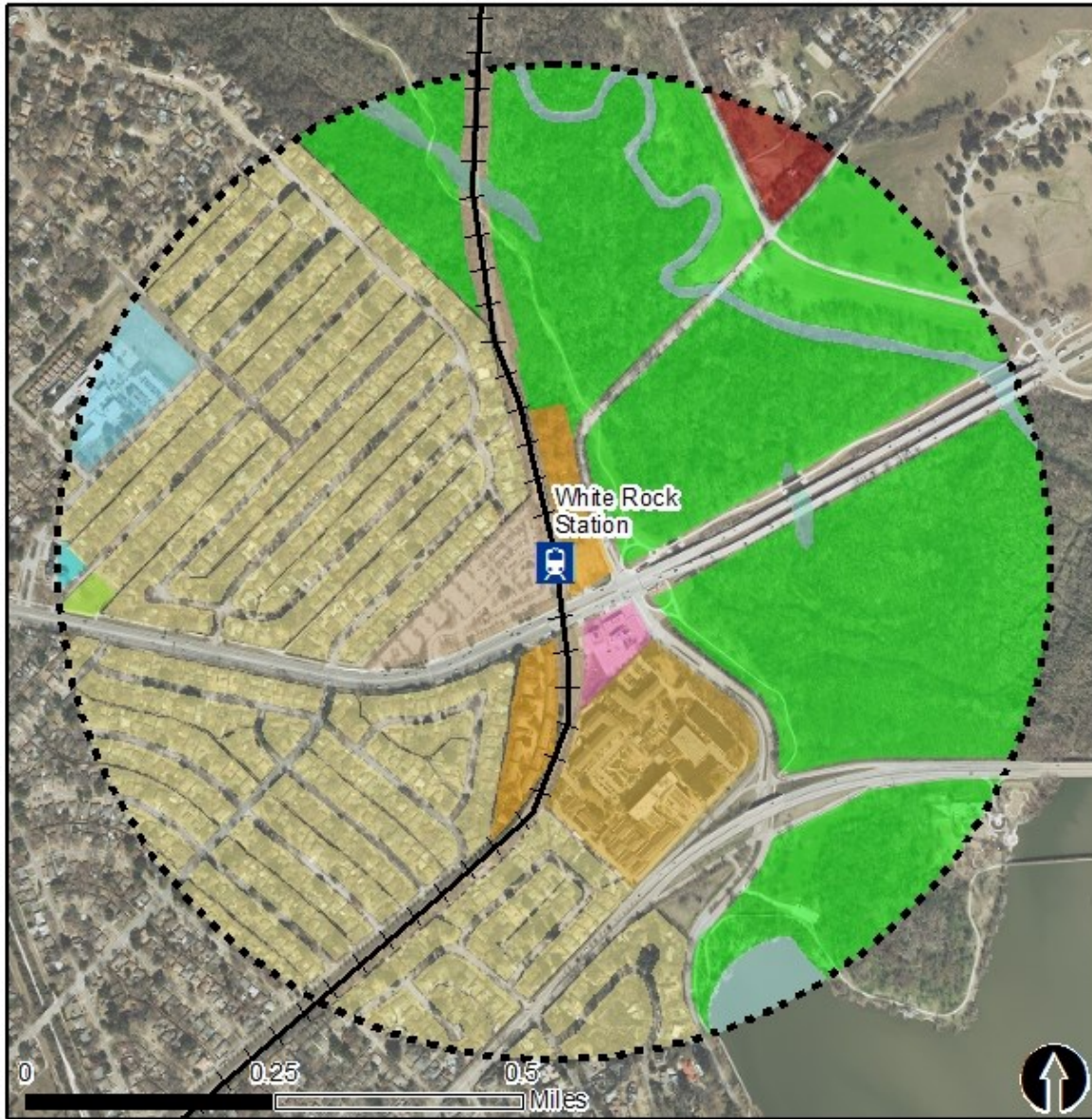
Commute To Work³

Percent Automobile	85.0%
Percent Drive Alone	78.8%
Percent Carpool	6.2%
Percent Transit	2.2%
Percent Bike	0.0%
Percent Walk	1.5%
Percent Other	1.0%
Percent Work from Home	10.3%
Percent Zero-Vehicle Households	4.7%

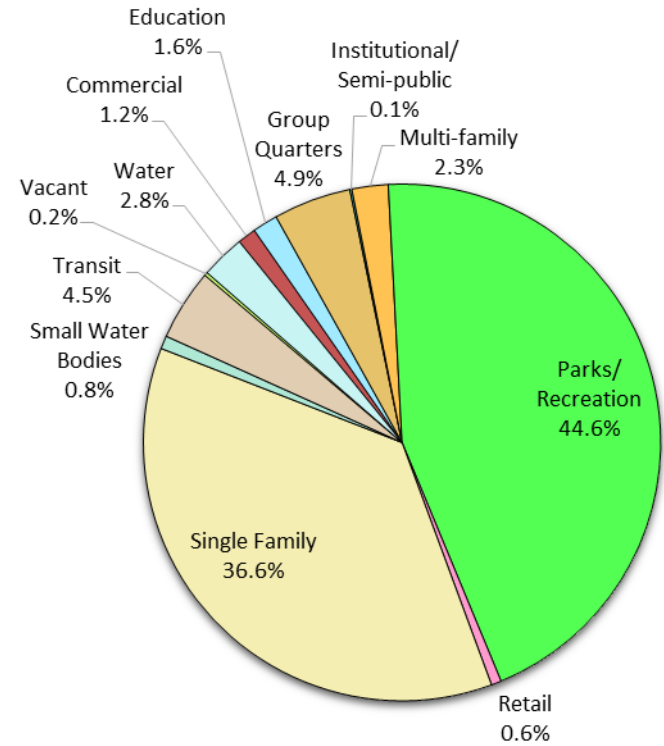
Traffic Survey Zone 2017 Employment Forecast²

Total Jobs	4,524
Job Density (jobs/sq. mile)	1,554

Land Use (2016) – White Rock Station



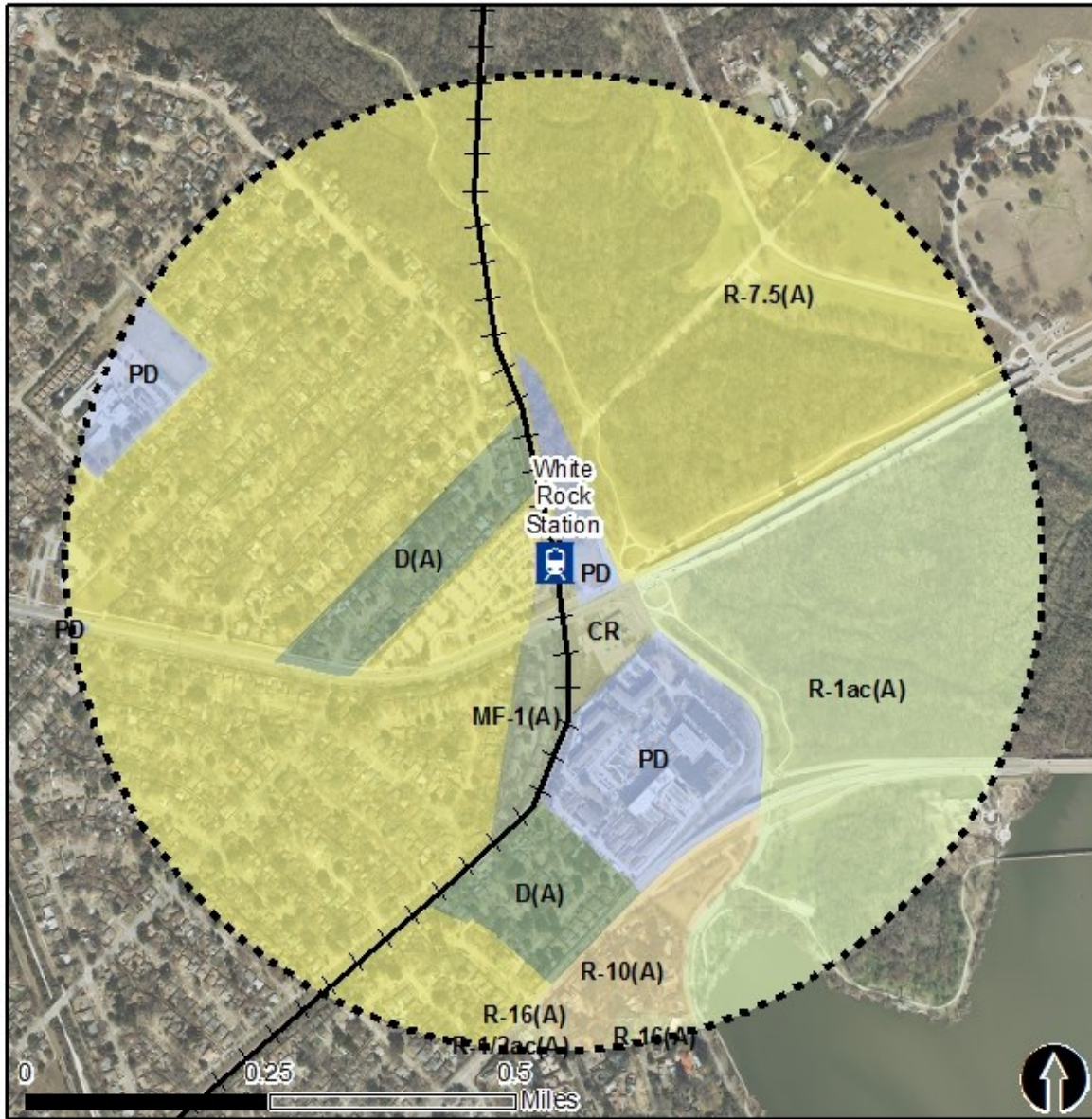
Land Use Percentages



0.5 Mile Station Buffer

Rail Stations Rail Lines

Zoning (2016) – White Rock Station



Zoning Districts

- CR – Community Retail
- D(A) – Duplex District
- MF-21A) – Multi-family
- PD – Planned Development
- R-7.5 – Single Family
- R-10(A) – Single Family
- R-16(A) – Single Family
- R- 1ac(A) – Single Family

For more information on zoning, please visit the City of Dallas Zoning website at:

<http://gis.dallascityhall.com/zoningweb/>



Rail Stations —+— Rail Lines

Pedestrian Routes to Rail - White Rock Station



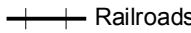



Last Updated: February 2015



North Central Texas
Council of Governments

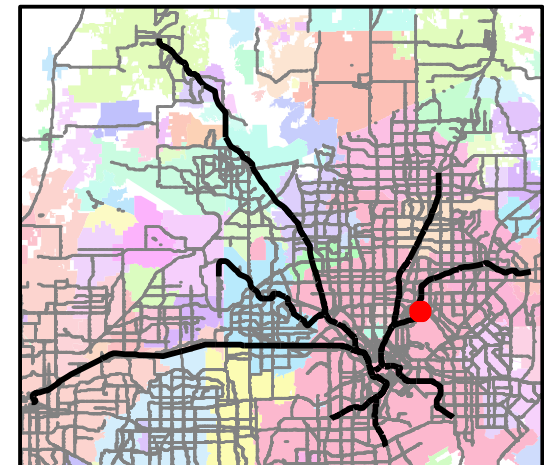


Legend

-  Rail Stations
-  0.5 Mile Station Buffer
-  Railroads
-  Existing sidewalk facilities within a 0.5 mile walk distance
-  Existing sidewalk facilities greater than a 0.5 mile walk distance
-  Existing sidewalk facilities that are disconnected due to a gap in the network

Project Overview

The Pedestrian Routes to Rail study identifies all existing pedestrian facilities within a half-mile radius of existing light rail and commuter rail stations in the Dallas-Fort Worth region based on 2014 data. ArcGIS Network Analyst tool was used to identify continuous facilities that are less than or greater than a half-mile actual walking distance to a station. The maps also reflect existing facilities that are disconnected due to gaps or other barriers not allowing a continuous pedestrian route to a station. The maps do not reflect the condition or ADA compliance of the existing infrastructure. More information on the Routes to Rail study and methodology is available at: nctcog.org/RoutesToRail



Bicycle Routes to Rail - White Rock Station

Last Updated: October 2016



North Central Texas
Council of Governments



Legend



Rail Stations



0.5 Mile
Station Buffer



Rail Lines



On-Street Bikeway, Existing



On-Street Bikeway, Planned



2040 Veloweb



Off-Street Path, Existing



Off-Street Path, Planned

Project Overview

The Bicycle Routes to Rail study identifies all existing and planned bikeways in proximity to existing or under-construction light rail and commuter rail stations in the Dallas / Fort Worth region based on 2016 data. The maps reflect off-street paths (trails) and streets designated by local adopted master plans for dedicated bikeways (e.g. bike lanes, cycle tracks) located on the street. In accordance with the Texas Transportation Code, bicyclists have a right to the road. As such, the map does not reflect other roadways around the station that may have signed bike routes or by state law may be used by bicyclists. More information about the Routes to Rail study and methodology is available at:

nctcog.org/RoutesToRail

