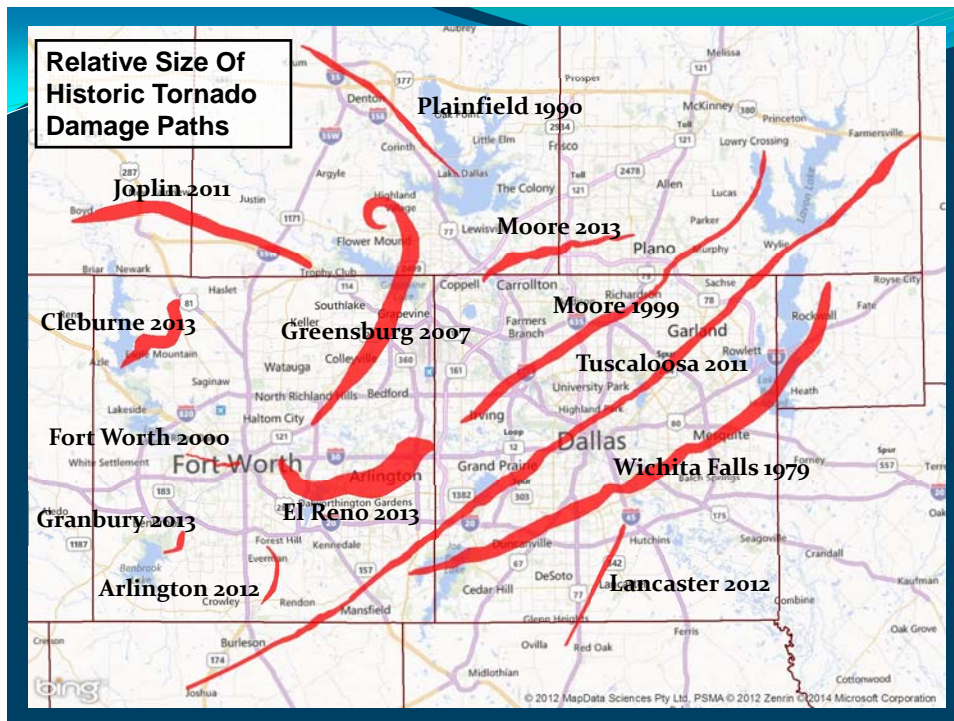


# TESSA

## El Reno

### The World's Largest Tornado Comes to Arlington, Texas

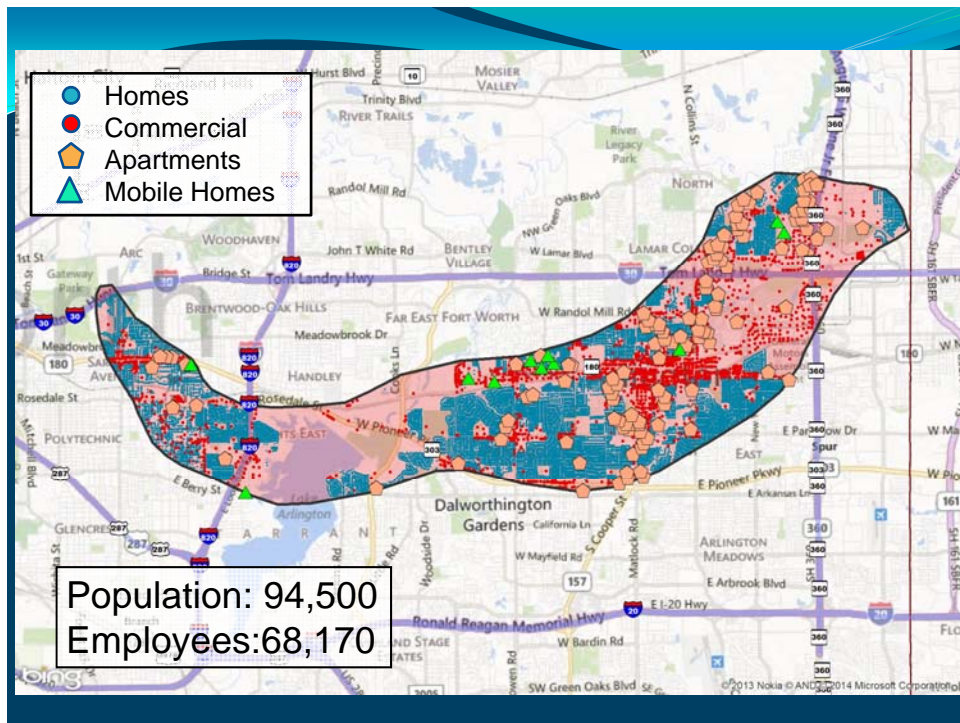
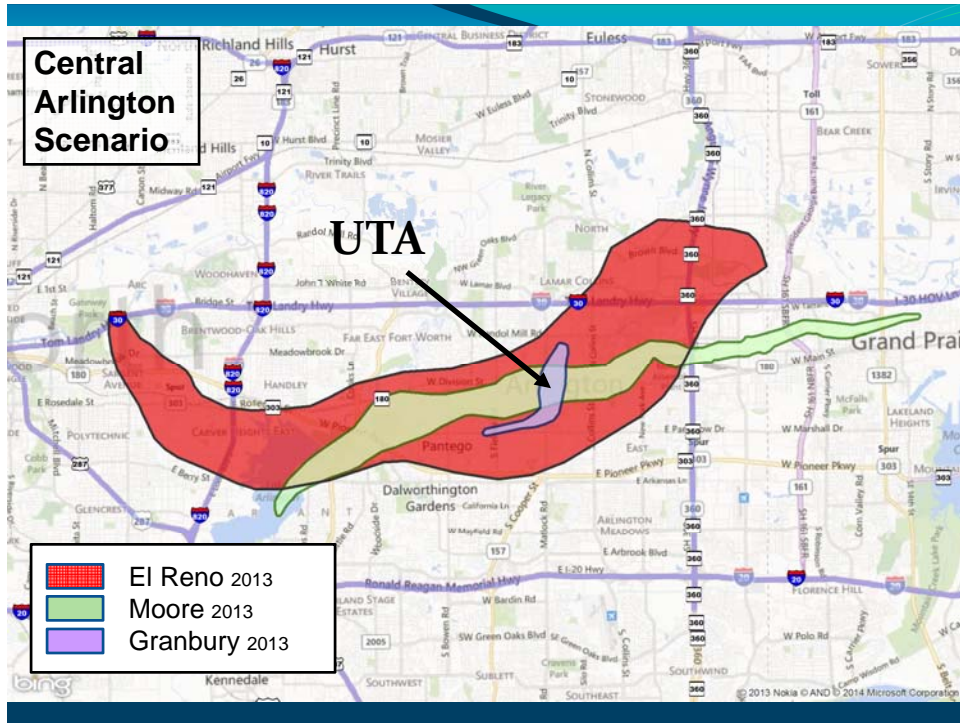


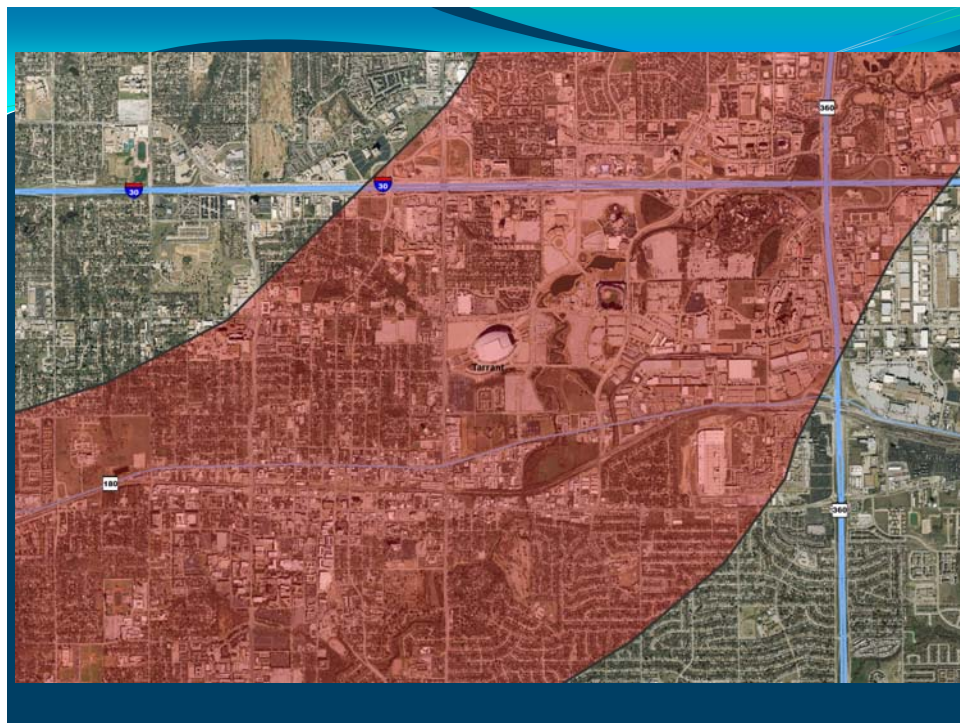
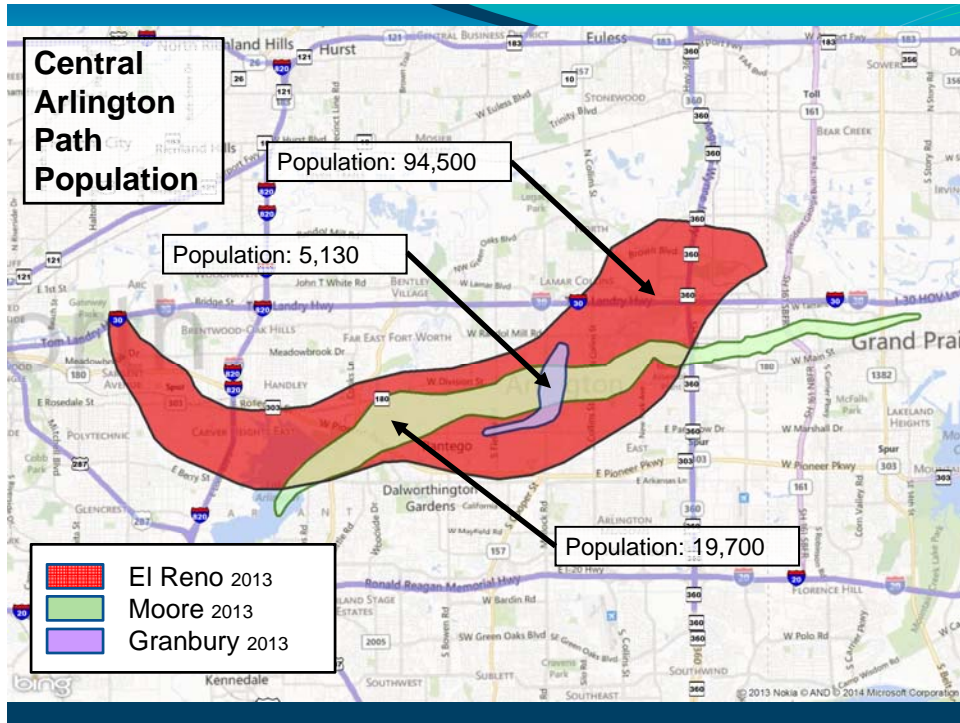
## Historic Tornado Damage Path Sizes

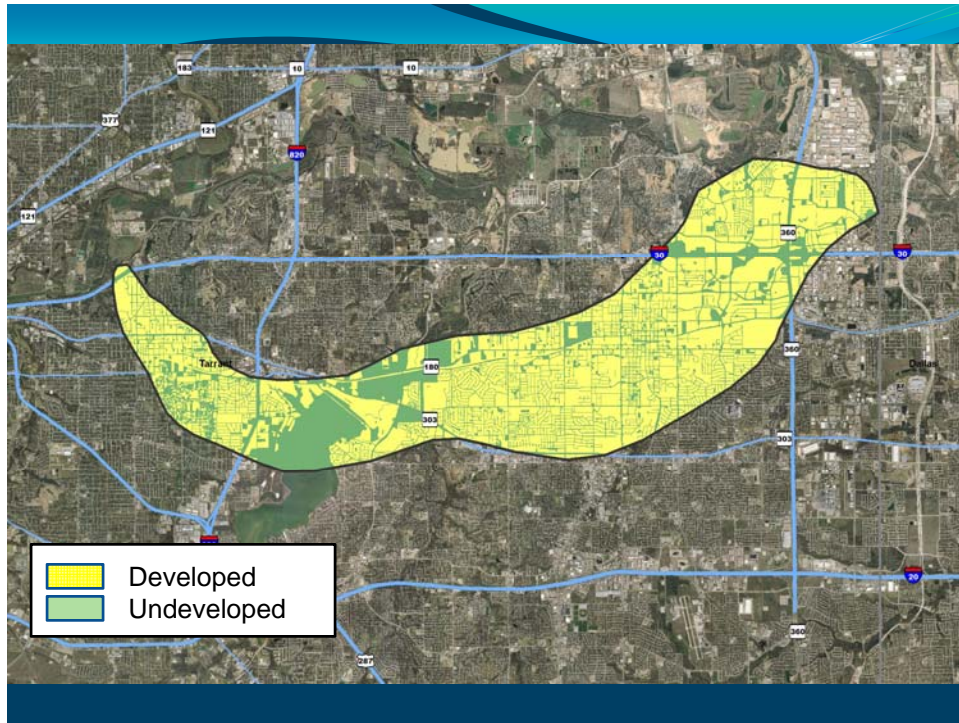
<u>Storm</u>	<u>Square Miles</u>
Fort Worth, TX 2000	0.5
Granbury, TX 2013	0.9
Plainfield, IL 1990	5.8
Moore, OK 2013	7.6
Joplin, MO 2011	18.5
Moore, OK 1999	19.1
<b>El Reno 2013</b>	<b>29.1</b>
Greensburg, KS 2007 (1 <sup>st</sup> tomado)	29.7
Tuscaloosa, AL 2011	42.5
Wichita Falls, TX 1979	46.0

Mesocyclone Over the Stadiums in Arlington, 2012









## Development in the Path

Type	Units	Value
Single Family Homes	18,500	\$1,800,000,000
Apartment Units	19,000	\$570,000,000
Commercial Structures	2,200	\$2,400,000,000
<b>TOTAL</b>	<b>39,700</b>	<b>\$4,770,000,000</b>

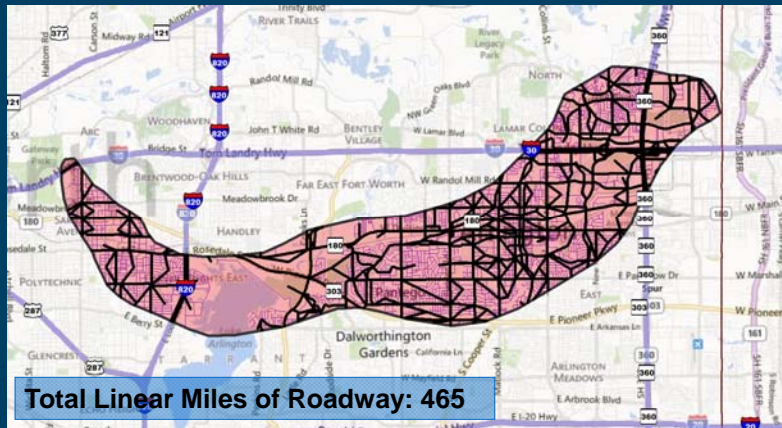
# Traffic in the Path

Normal Volume

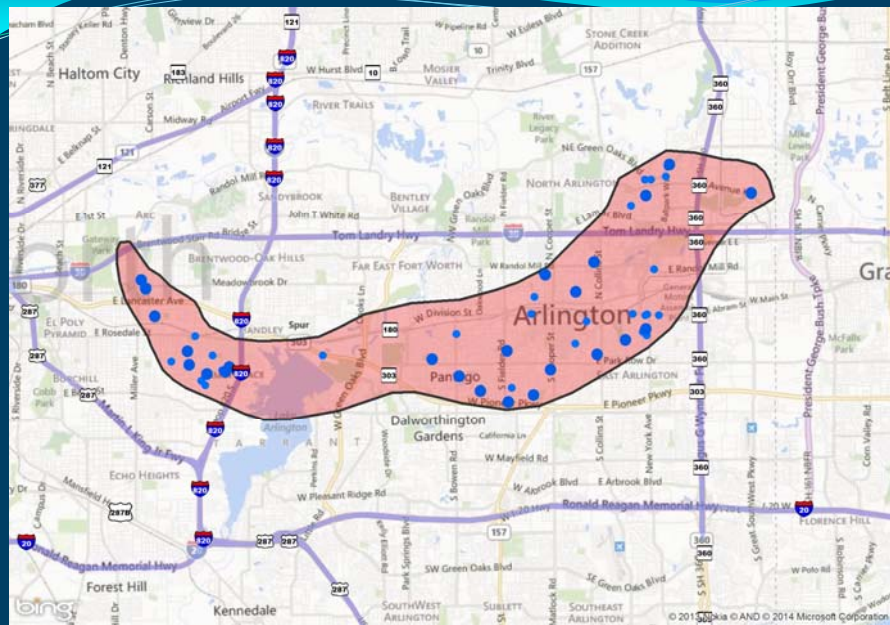
1,694

Traffic Jam

110,080



# Schools and Day Care Locations



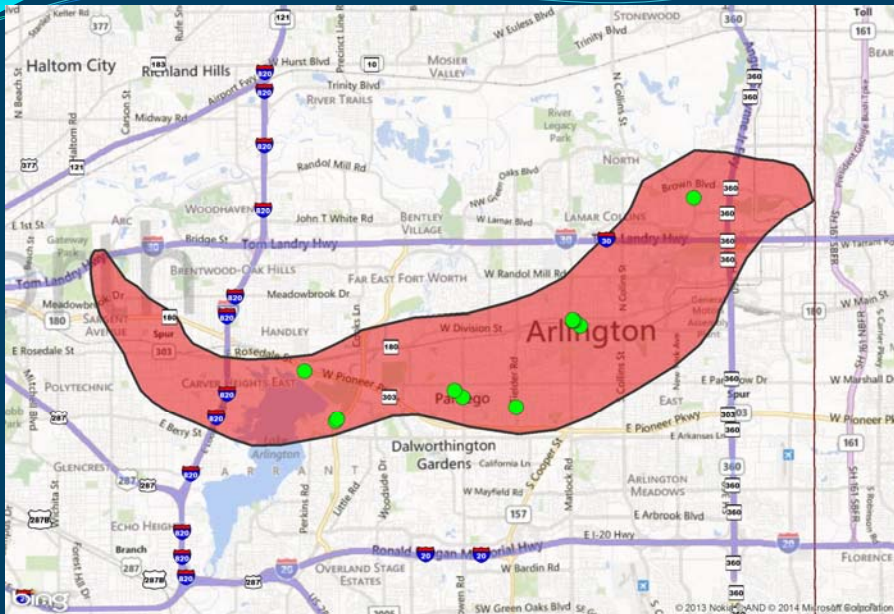
## School Enrollment in Path

Total K-12 School Enrollment: 17,800

Class	Students
High School	3,760
Grades 6-8	4,260
Pre-School/Elementary	9,780

Total UTA Enrollment: 33,000

## Police and Fire Stations

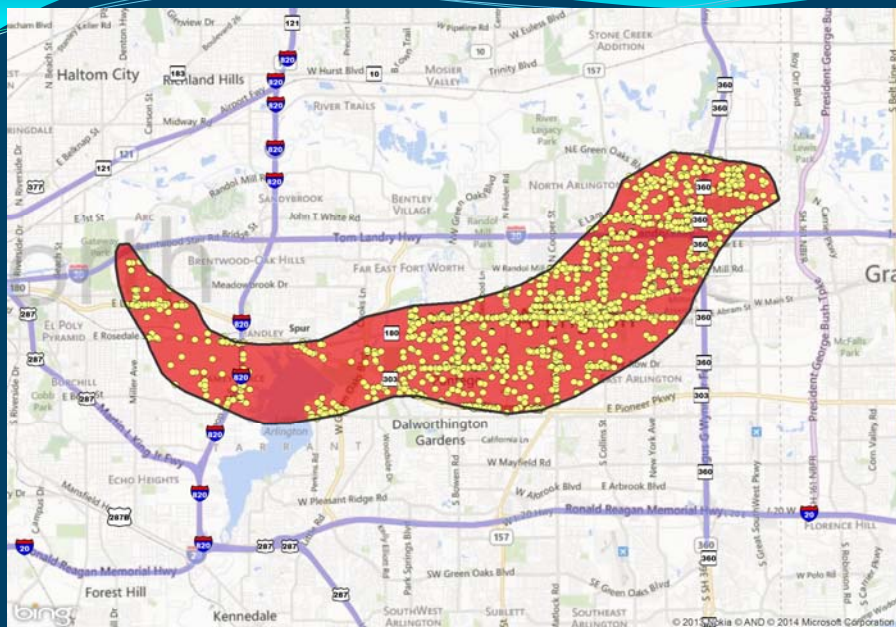


## Employees in Path

Total Employees: 68,170

Class	Employees
Grade Schools	9,300
Universities	4,800
Hospitals/Health Care	4,500
Performing Arts/Sports	2,300
Restaurants	3,200
Amusement Parks	1,700
Justice, Public Safety	1,500

## Business Locations





## Development Profile

Class	Quantity
Restaurants	160
Hotels	27
Supermarkets/Grocery	15
Dentists	48
Gas Stations	25
Lawyer Offices	89
Physician Offices	82
Bars	20
Salons	28
Child Day Care Services	29

## Restaurant, Bar and Food Store Locations

