

Leveraging 'Free' GIS Tools

Regional GIS Meeting | 2011 | Allen

Adam Rose, P.E., CFM, PMP
Alan Plummer Associates, Inc.



agenda

- background | purpose | advancements
- examples
- discussion



target user
background



Reliability



Technological
Affinity



Cost
Allowance

InfoWorks™ ICM



EPA SWMM

Version 5.0

Build 5.0.021

<?xml version=""
<kml xmlns="http://

purpose | advancements

selected statistics

cost analysis

paradigm shift



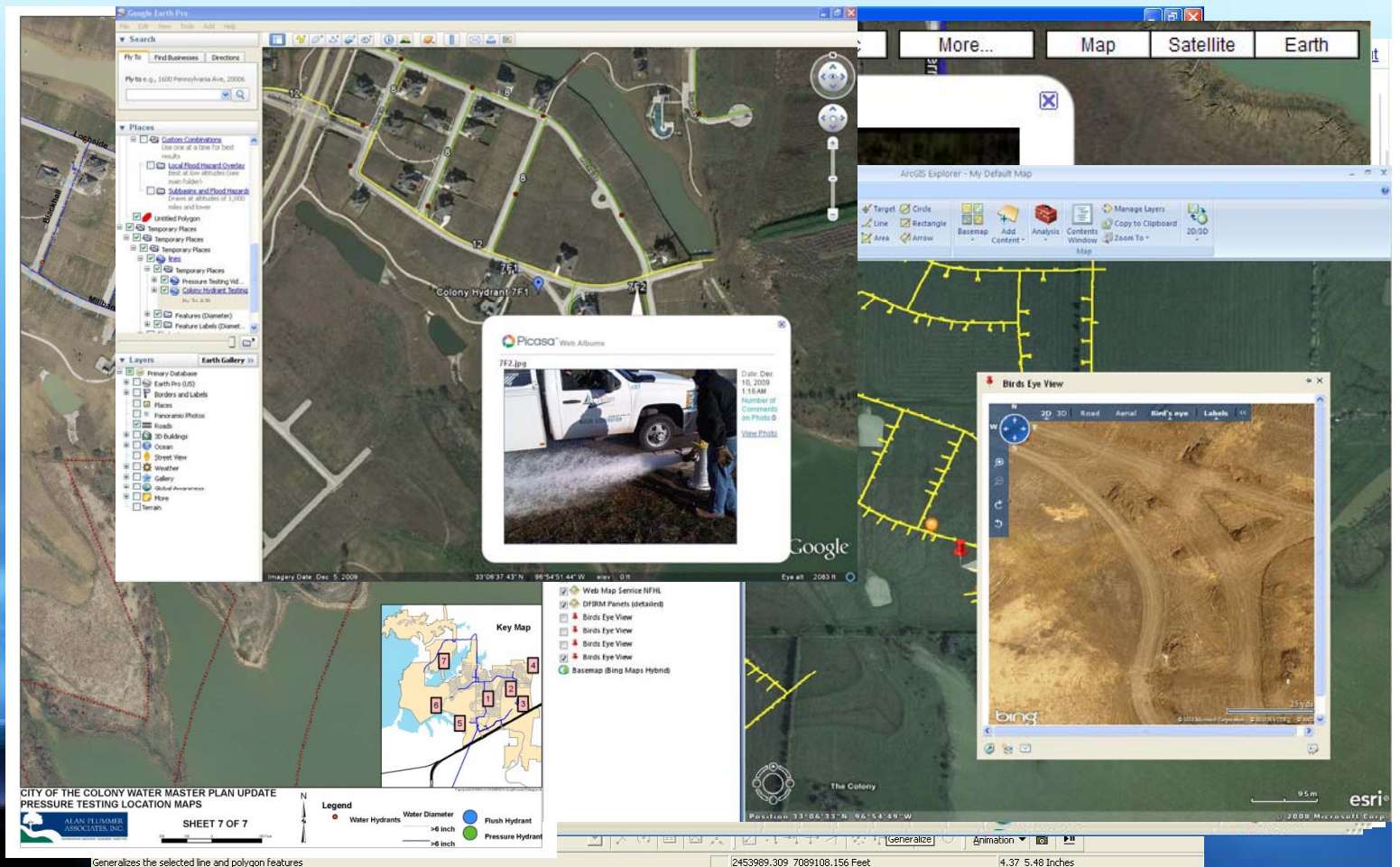
free lunch caveats

- there's no such thing as a ...
- will never replace sound judgment
- ...always improving/always changing

<http://favurl.com/6zq7e2h>

online mapping

- paper
- gis
- earth/
explorer
- www
- qik

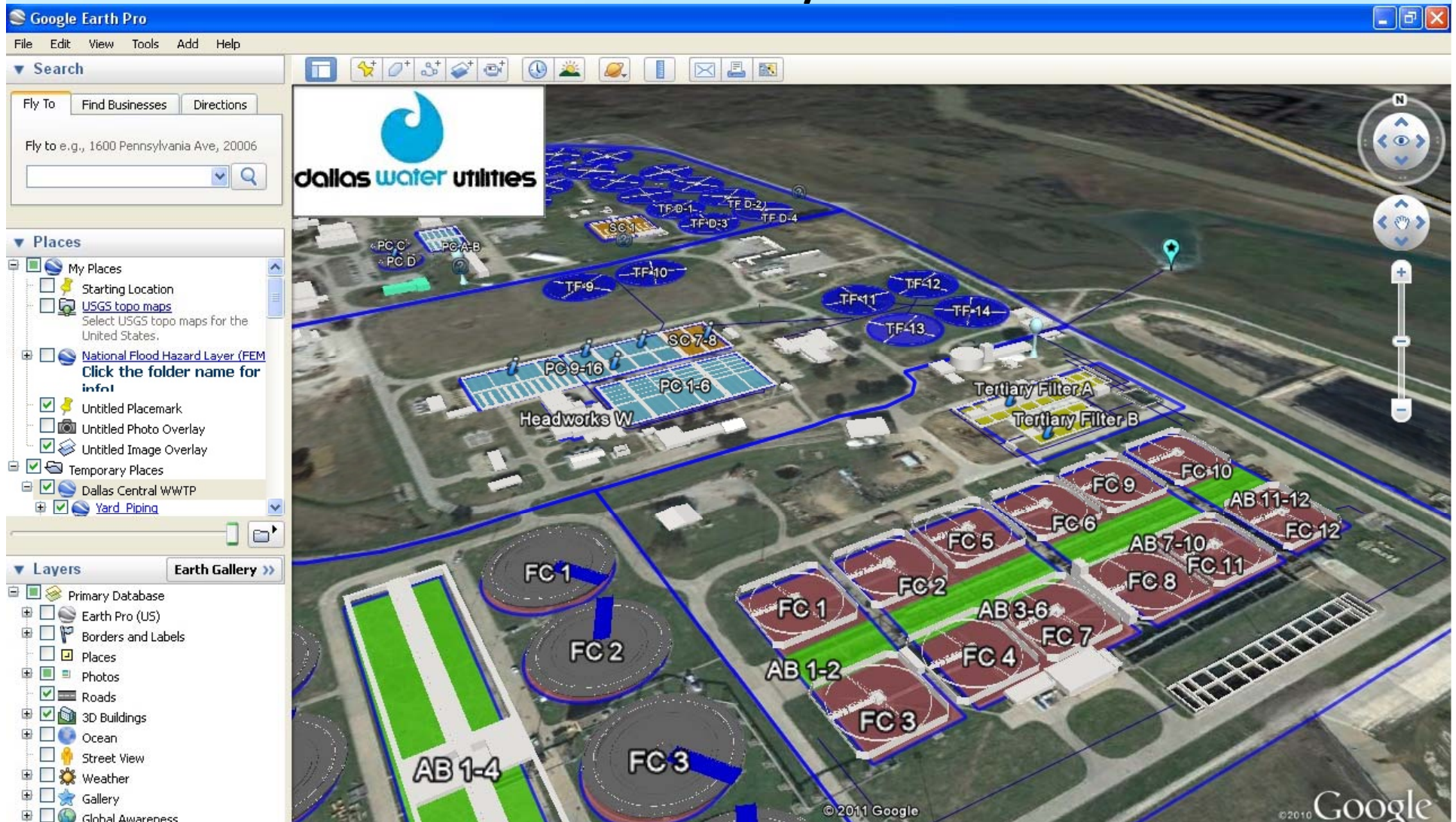


value

experience

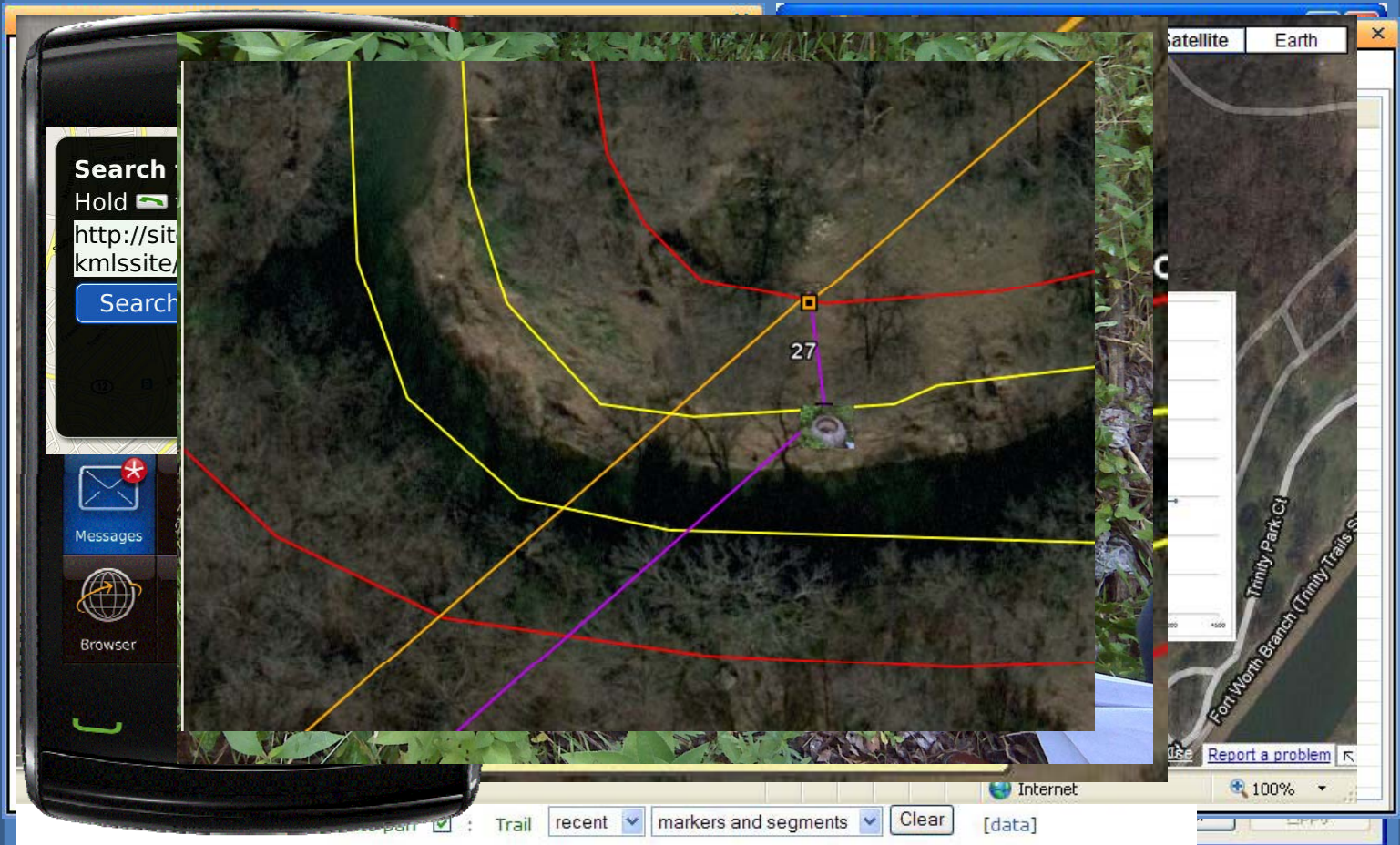
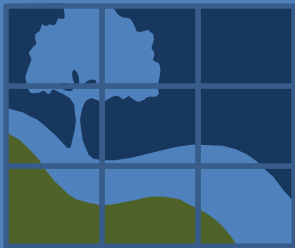
Web/Mobile Mapping Progress

KML /HTML



phone applications

- Fort Worth
- kml
- google
- gps
- geotag
- www



tools

GPS and phone (any OS)

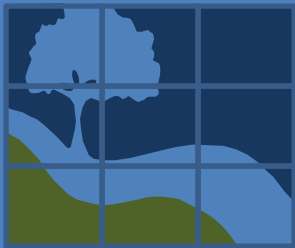
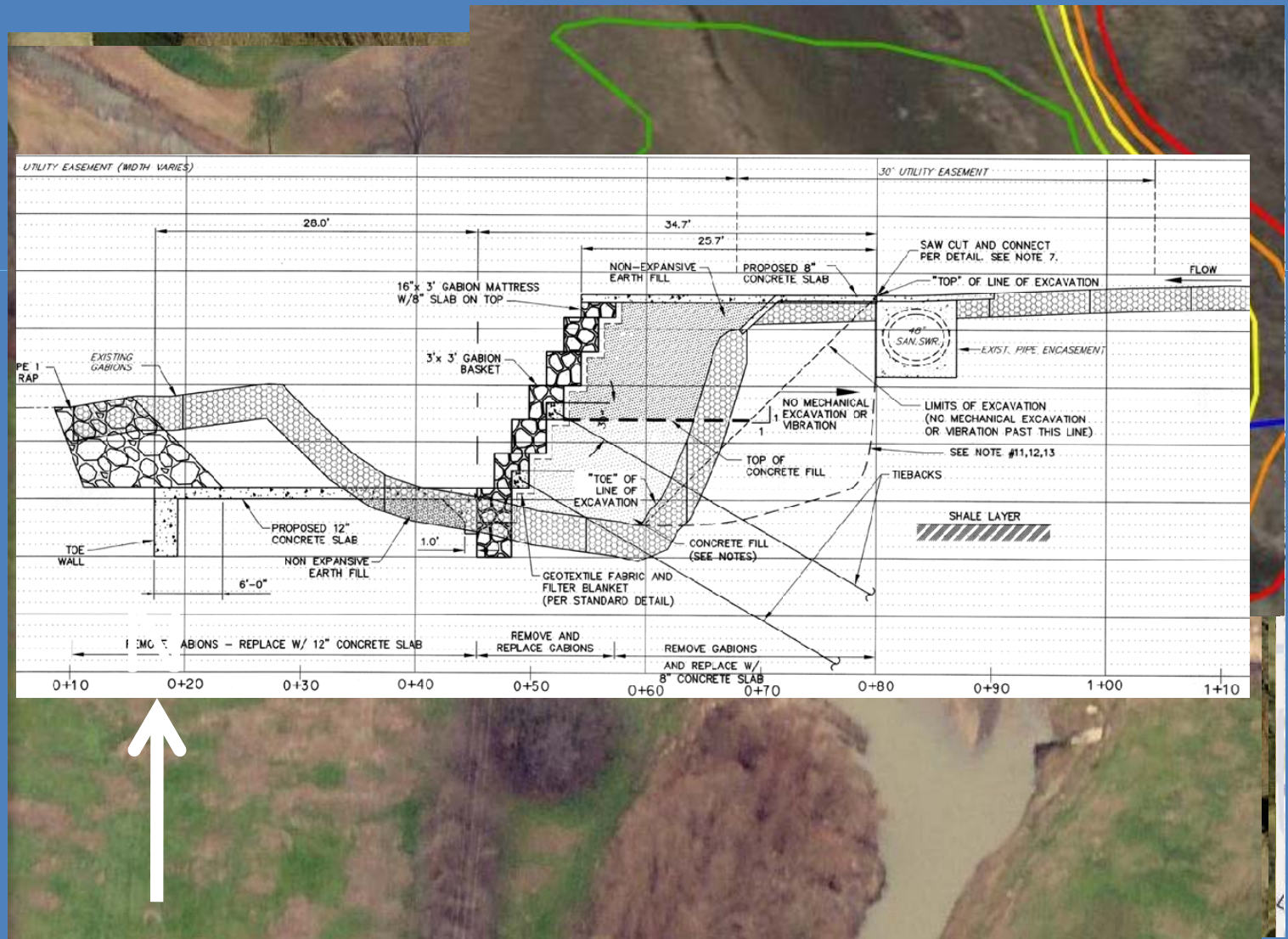
data plan

experience



phone example: Rush Creek

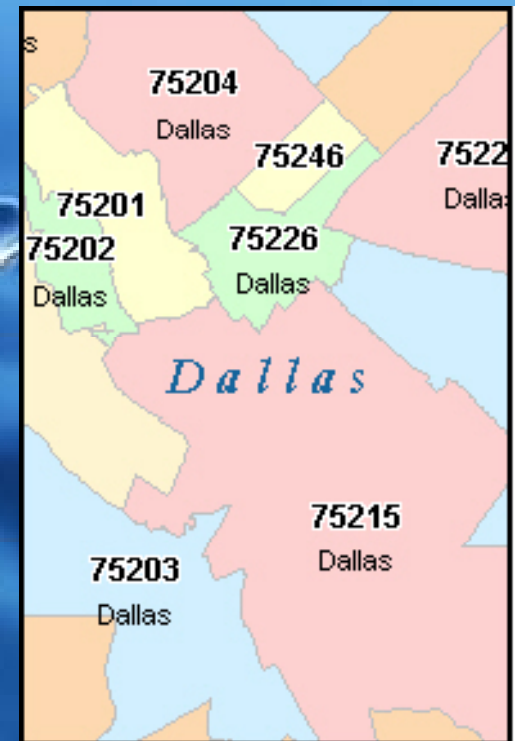
- Arlington
- kml
- google
- image overlay
- design aid



KML Limitations: Maps/Mobile

By the Numbers

- Placemarks with `<name>` elements
- Maximum fetched file size 5MB/10MB
- Icons
- Maximum number of Network Links 10
- Folders
- Maximum number of features 1,000
- HTML in the `<description>` element
- KMZ
- Points, LineStrings and Polygons
- Styles `<color, fill, opacity, etc>`

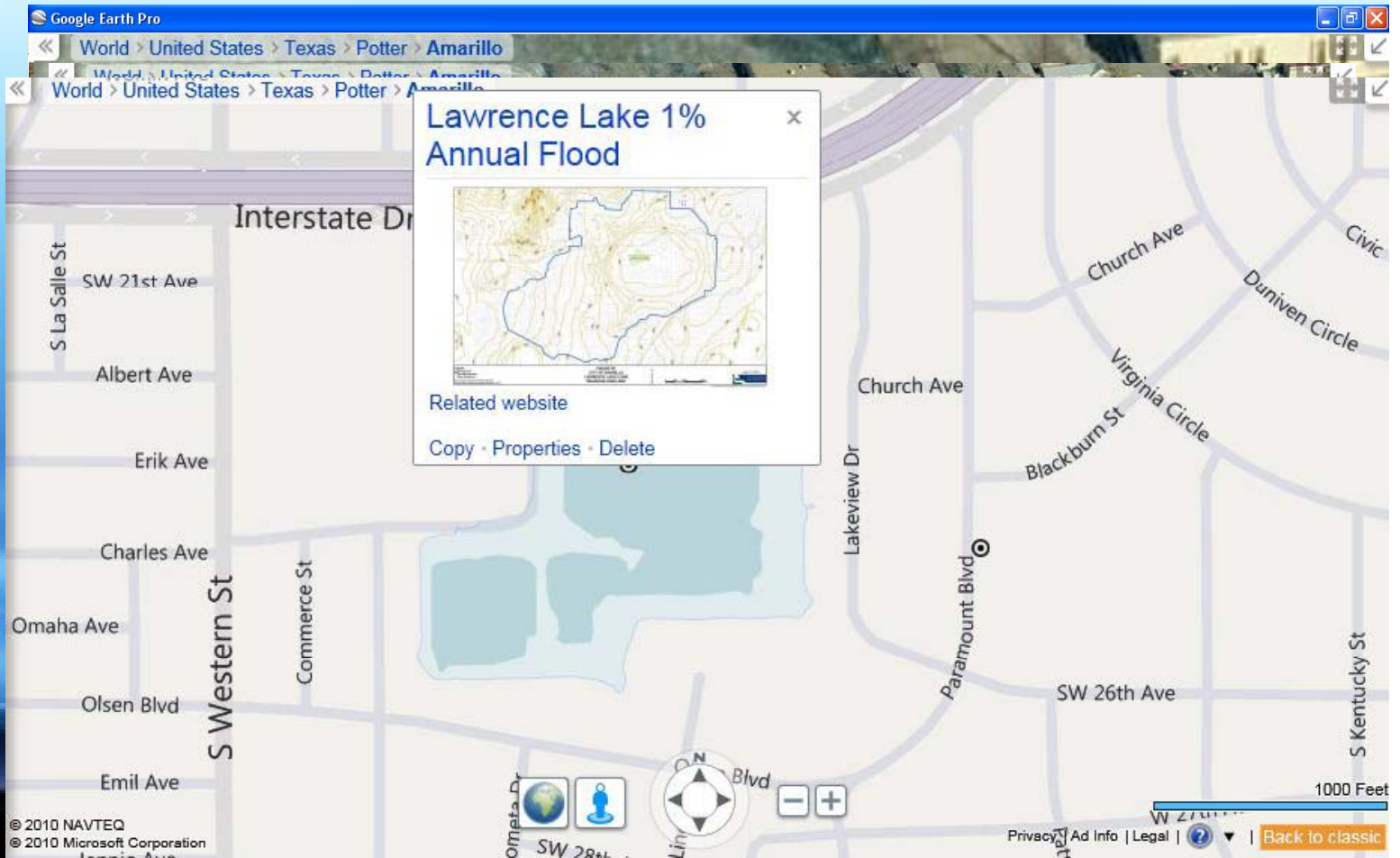


ET Geo Wizards



beyond the aerial

- Amarillo
- earth
- kml
- bing
- live.com
- com aid



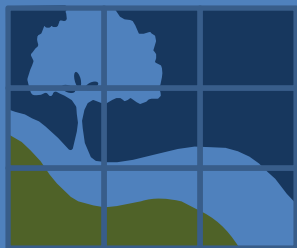
experience



IS
internet/basics

beyond the aerial (again)

- Dallas
- earth
- kml
- strategic aid
- bing



World > United States > Texas > Dallas > Dallas > Pleasant Grove

World > United States > Texas > Dallas > Dallas > Pleasant Grove

Elam Creek
Zone AE

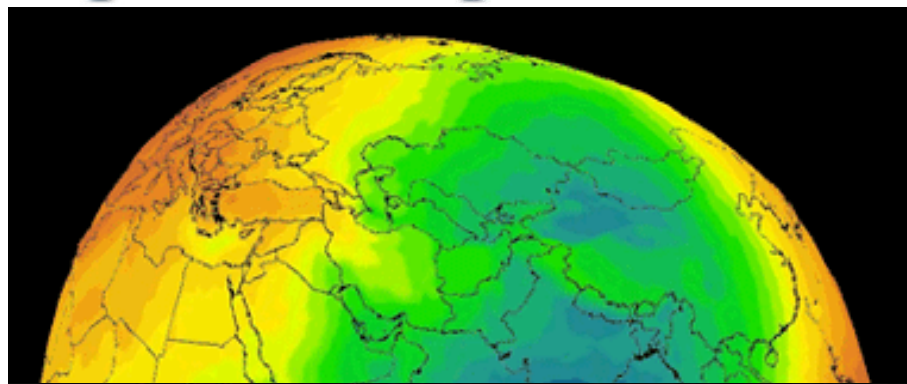
Copy · Properties · Delete

© 2010 NAVTEQ
© 2010 Pictometry International Corp
© 2010 Microsoft Corporation

50 Feet

Privacy | Ad Info | Legal | ? | Back to classic

News to Use

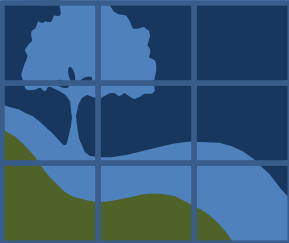
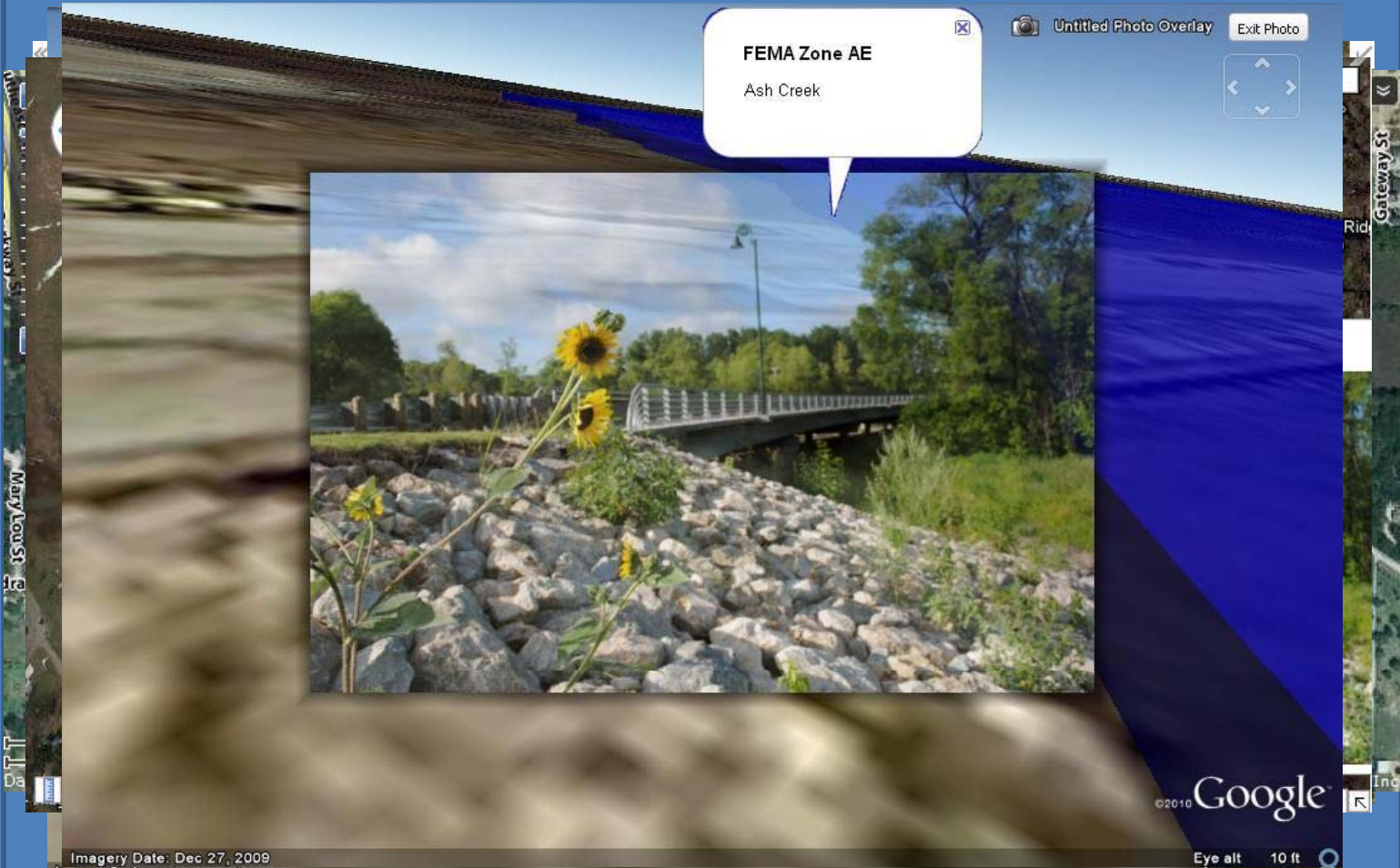


```
<georss:where>  
<gml:Point>  
<gml:pos>y,x</gml:pos>  
</gml:Point>  
</georss:where>
```

- Cat: ebRIM App Profile: Earth Observation Products
- Catalogue Service
- CityGML
- Coordinate Transformation
- Filter Encoding
- GML in JPEG 2000
- GeoAPI
- Geographic Objects
- Geography Markup Language
- Geospatial eXtensible Access Control Markup Language (GeoXACML)
- KML
- Location Services (OpenL5)
- NetCDF
- Observations and Measurements
- SWE Common Data Model
- SWE Service Model
- Sensor Model Language
- Sensor Observation Service
- Sensor Planning Service
- Simple Features
- Simple Features CORBA
- Simple Features OLE/COM
- Simple Features SQL
- Styled Layer Descriptor
- Symbology Encoding
- Table Joining Service
- Transducer Markup Language
- Web Coverage Processing Service
- Web Coverage Service
- Web Feature Service
- Web Map Context
- Web Map Service
- Web Map Tile Service
- Web Processing Service
- Web Service Common

bta: street view

- Azle
- earth
- kml
- public aid



tools
internet/basics
camera/gps

experience

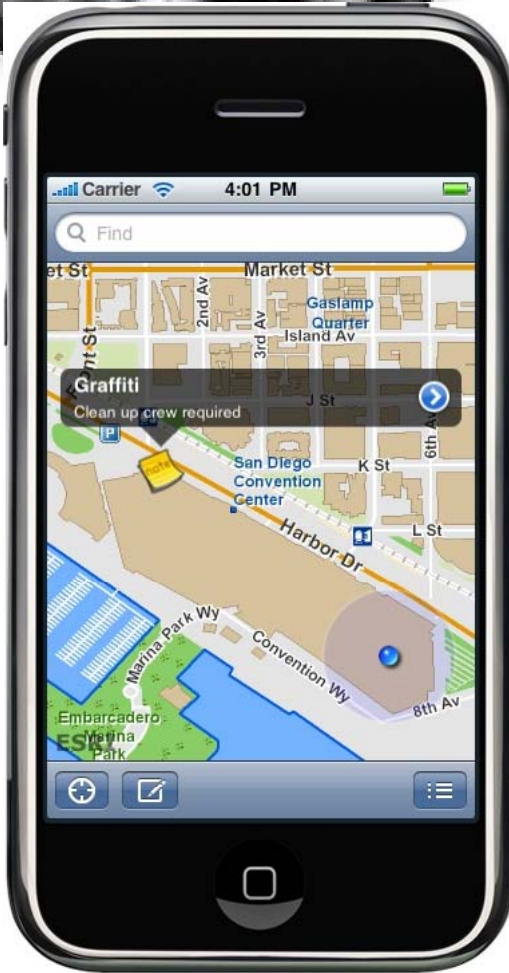


bta: street view

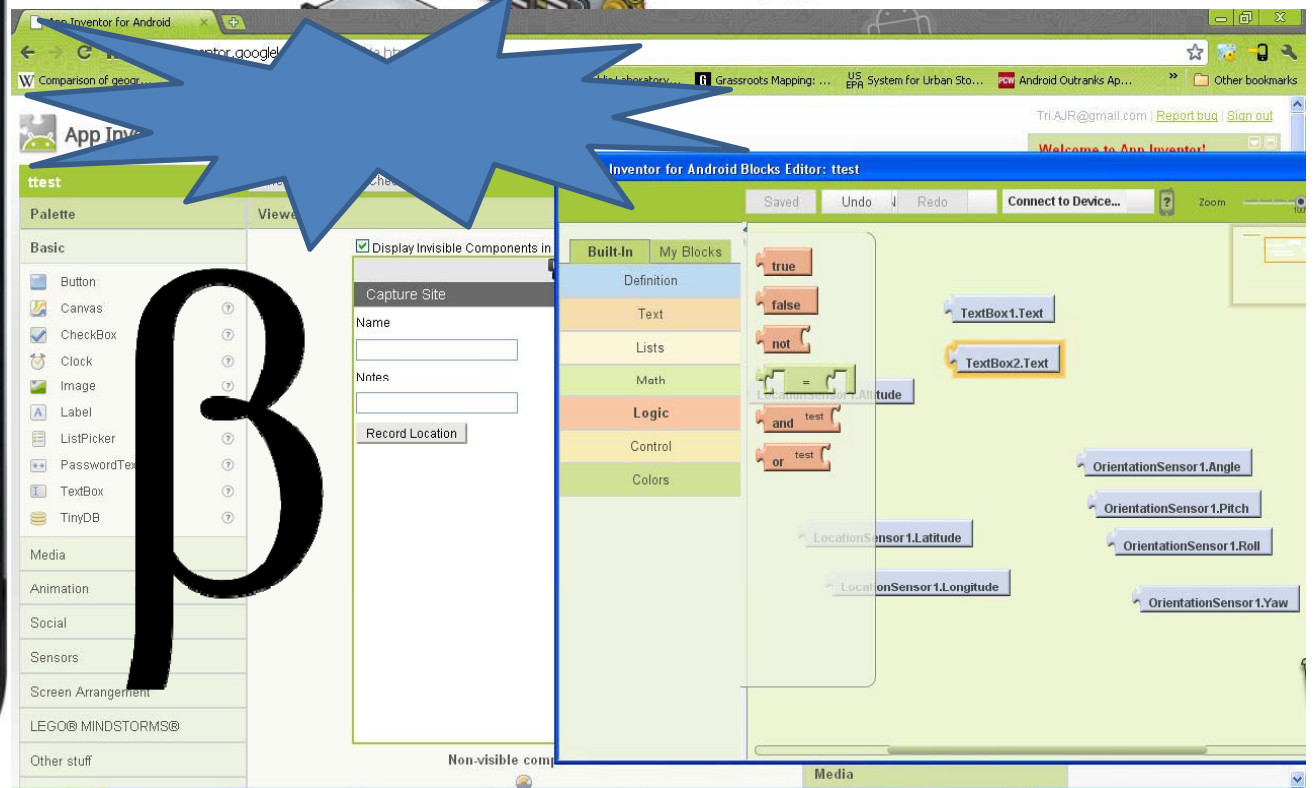
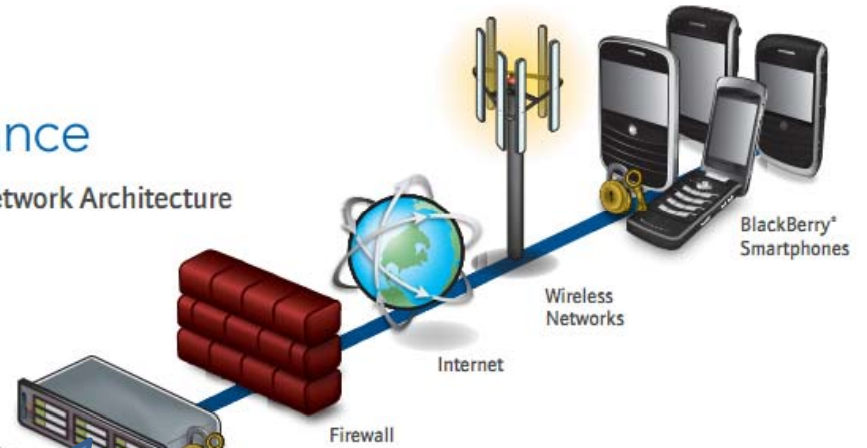
- Fort Worth
- earth
- bing
- Kml
- mapsicle
- visual aid



'Freely' Extending Capabilities



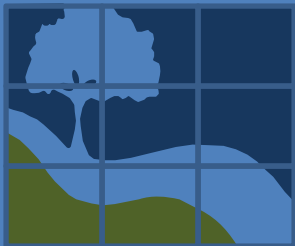
Mobile Network Architecture



B

DIY streetview

- Pantego
- bing
- kml
- panorama
- earth
- model
- support
aid



© 2010 Google
© 2010 Google

© 2010 Google

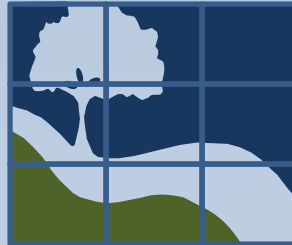
summary

- new tools exist that actually add value
- visualization can help in many facets
- regardless of tools, you have work to do

questions/etc



Adam Rose
Alan Plummer Associates, Inc.
arose@apaienv.com
817.806.1700



<http://favurl.com/6zq7e2h>