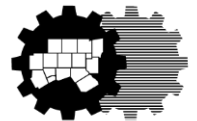




REGIONAL SCHOOL COORDINATION TASK FORCE MEETING

Karla Weaver, AICP
Program Manager

December 9, 2015

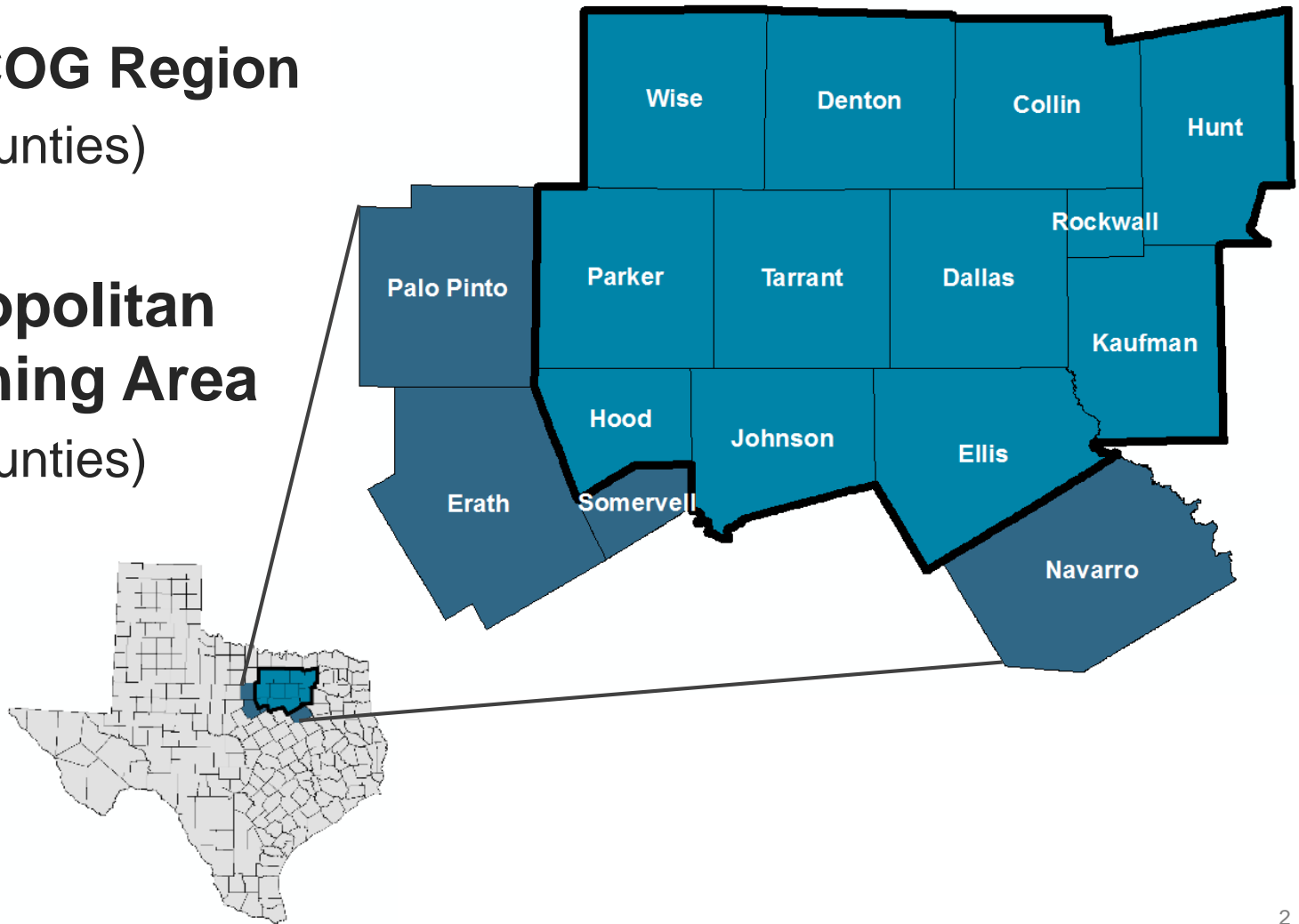


North Central Texas
Council of Governments

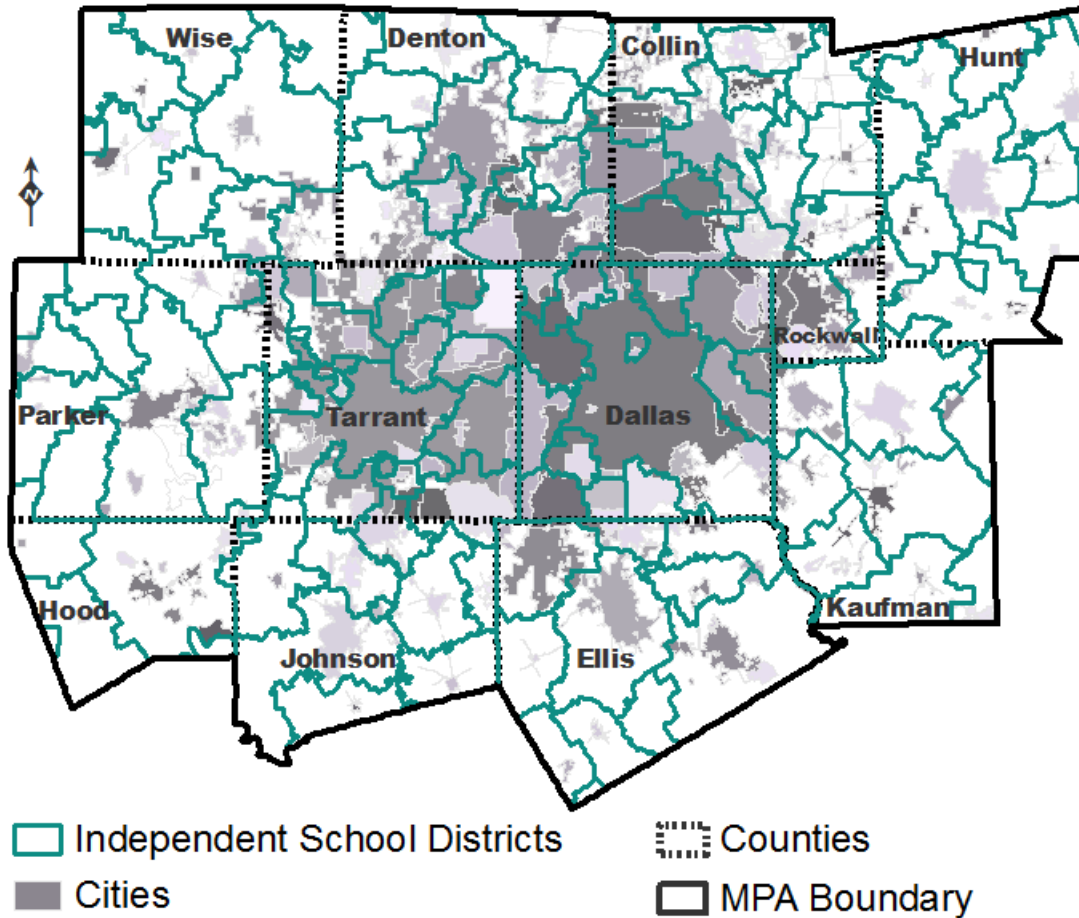
North Central Texas Council of Governments (NCTCOG)

 **NCTCOG Region**
(16 counties)

 **Metropolitan Planning Area**
(12 counties)

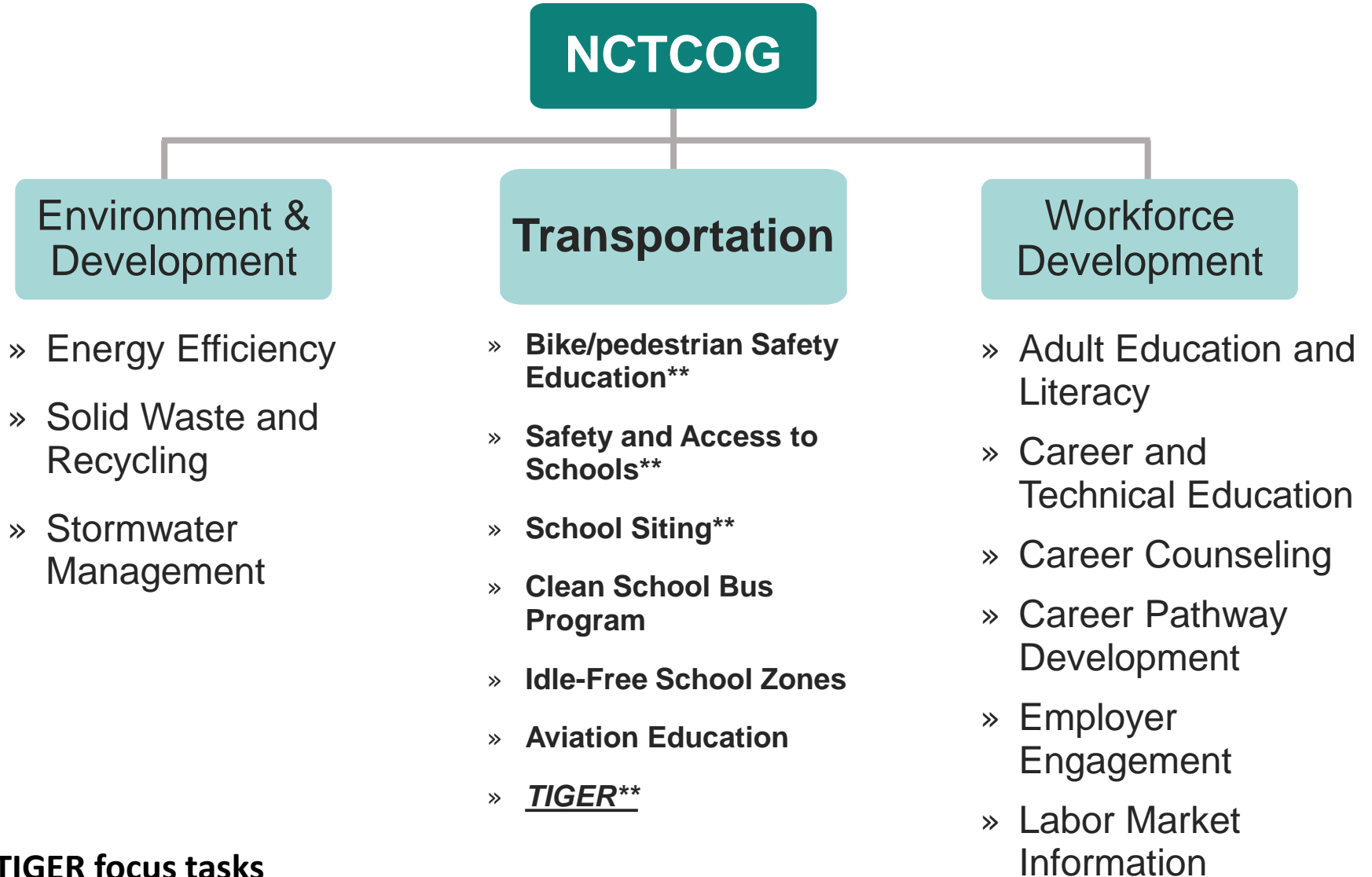


Metropolitan Planning Area



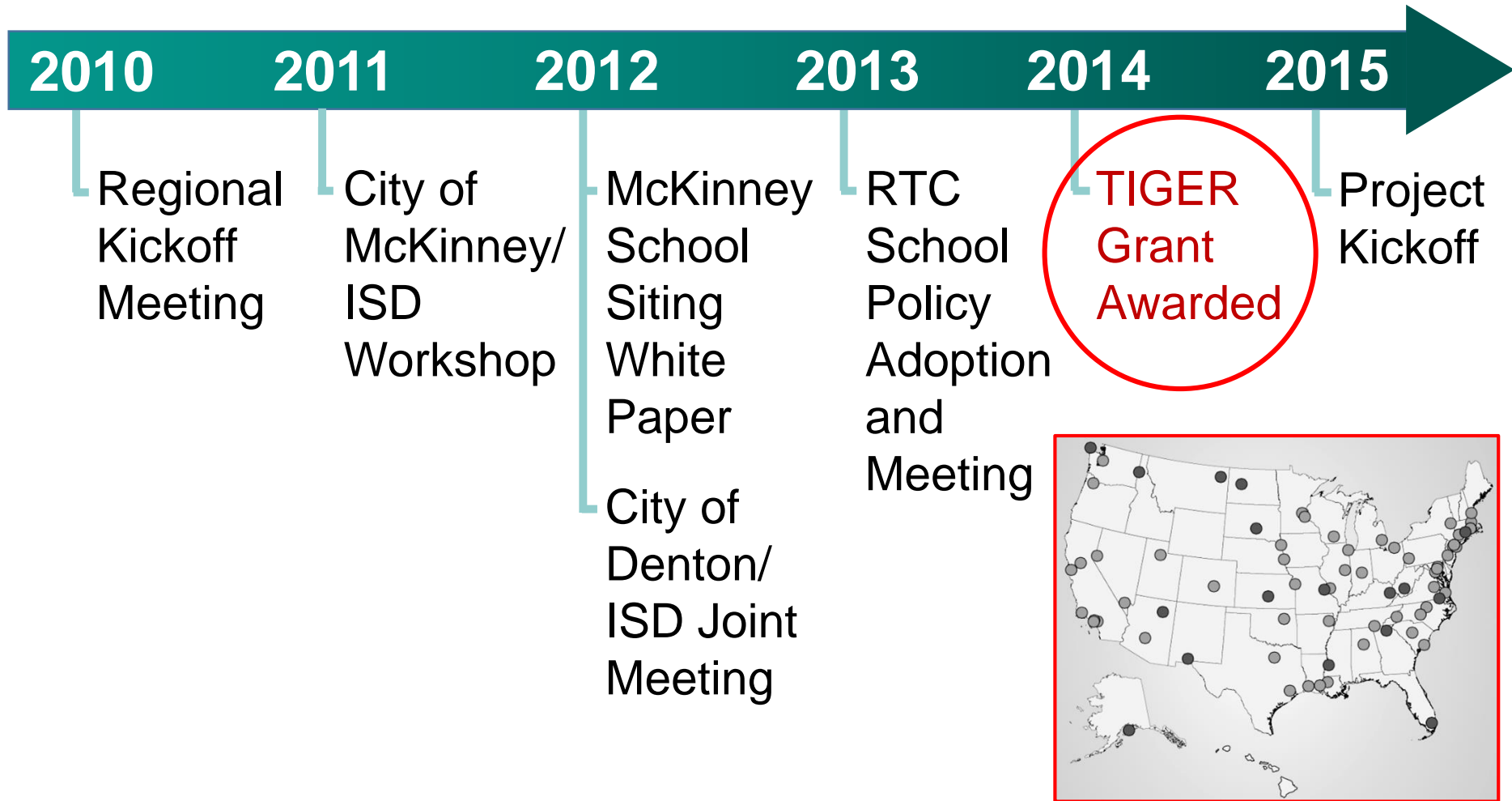
- » **9,300** square miles
(larger than the states of New Hampshire, New Jersey, Connecticut, Delaware, and Rhode Island)
- » **7 million** people
- » **209** cities
- » **127** Independent School Districts (ISDs)

NCTCOG School-Related Initiatives



****TIGER focus tasks**

Sustainable Development: Previous Initiatives



Why is NCTCOG involved?

What does NCTCOG hope to accomplish?

- » Cities and School Districts make decisions that affect each other and transportation.
- » Cities and School Districts we have found are not always communicating or speaking the same language regarding growth and transportation.
- » Funding is limited and smart land use planning can affect transportation choices.
- » Transportation concerns of safety and access are viewed many ways and differently and we are looking for everyone to understand the broader conversations.
- » Overlap of planning and implementation occurs.
- » Information/Data Sharing is needed.

Regional Transportation Council (RTC) Policy Supporting School Districts

Active Transportation:

Advocate for:

- **Safe Routes to School**
- **Precious Cargo program**
- **Transportation Alternatives Program**

Outreach & Engagement:

- Engage students to design cover of Progress North Texas
- Advocate for STEM (science, technology, engineering, and mathematics) fields



School Siting:

- **Pilot school siting programs**
- **School bus stop coordination**
- **Technical assistance for school districts**

Air Quality:

- **RTC Clean Fleet Vehicle Policy**
- **Clean school bus**
- **Energy audits**
- **Vehicle idling-reduction**
- **Air quality-friendly contracting**

Community Schools and Transportation Program (TIGER Grant)



Encourage interagency **coordination**.



Advance long-term planning for **school siting**.



Improve **transportation safety** near schools.



Promote **multimodal transportation** options to schools.



Interagency Coordination

209 cities and 127 independent school districts (ISDs).

- » **Coordinate land use planning efforts:** ISD facility planning, city comprehensive plans, and capital improvement plans.
 - » **Regional School Coordination Task Force (technical committee)**

- » **Coordinate transportation planning efforts:** school transportation, thoroughfare planning, and regional transportation planning.

- » **Remove policy barriers** to the development of sustainable schools.
 - » **Policy Workshops (October 10, 2015)**



*Regional Workshop with Elected Officials,
October 2015*



School Siting

- » **State and local policies** related to school siting and land banking.
- » **Land banking programs** and best practices.
- » **Demographic projections:** ISD, city, and regional.





Transportation Safety

- » Conduct **safety audits** at pilot schools sites.
- » Develop **recommendations** for pedestrian and bicycle safety around schools.
- » Create a bilingual pedestrian and bicycle safety **education** program, and transportation safety information guide.





Multimodal Transportation

- » **Public transit – school bus** coordination.
- » Pilot project analyses of **alternative transportation** connections, and ways to alleviate **traffic congestion**.



Next Steps for TIGER

- » School siting, land banking research and technical reports
- » Pilot project analyses: safety audits, transportation connections and traffic congestion
- » Task Force meetings next year
- » Survey
- » More discussion on Interagency Communication





SURVEY

Name:

Organization:

Email:

Job Title:

All Attendees

1. What are (or should be) the most important considerations when selecting a site for a new school facility? (Circle all that apply)

- a. Adjacent road capacity
- b. Availability of water/sewer
- c. Cost of land
- d. Distance from population served
- e. School transportation costs
- f. Size of parcel
- g. Walkability
- h. Not sure
- i. Other (please specify)

2. Please indicate any areas of interest related to schools and land use-transportation planning for future meetings or workshops. (Circle all that apply)

- a. Bicycle and pedestrian safety and infrastructure around schools
- b. Coordinating public transit and student busing
- c. Criteria for selecting sites for new schools
- d. Joint use facilities/agreements
- e. Land banking for future school sites
- f. Traffic calming and mitigation measures around schools
- g. Zoning for schools and the permitting process
- h. Other (please specify)

3. Would you be willing to participate in a brief follow-up interview with NCTCOG staff to discuss local practices related to school siting, student busing, and interagency coordination?

- a. Yes
- b. No

4. Are you aware of any elementary schools that would benefit from one of the following pilot project analyses? (Circle all that apply and provide the school name)

- a. Bicycle and pedestrian safety audit

- b. Transportation connections, travel flow patterns, and traffic congestion and analysis

5. What is the best time of year for future Task Force meetings (e.g., summer, November, etc.)?

Additional comments, questions, or recommendations?

(See back side for additional questions)


On-going Collaboration

- » TIGER
- » Other Transportation areas (air quality, vehicles, funding, etc.)
- » Other NCTCOG departments (E&D, Workforce Development, Emergency Preparedness, etc.)
- » Continued Coordination of training and events
- » Technical Assistance and Tools/Understanding what's needed to help in planning (training, funding, campus plans, growth plans, etc.)



For More Information

www.nctcog.org/schools


Search NCTCOG [GO](#)

Programs > Topics A-J > Topics K-Z > Departments > Services > About Us

transportation

[Transportation Home](#)
[Sustainable Development](#)
[Bicycle and Pedestrian Transportation](#)
[Community Schools and Transportation](#)
[Sustainable Development Funding Program](#)
[Transit Oriented Development](#)

Home > Transportation > Sustainable Development
[Print this page](#)

Community Schools and Transportation

HOT TOPICS

Regional School Coordination Task Force Meeting
12/9/15
Agenda (Coming Soon)

[Funding Opportunities and Transportation Alternatives Program \(TAP\)](#)

[Quick Facts](#)

[Meetings, Events and Presentations](#)

Useful Links and Information

| | | | |
|-------------------------------|--|-------------------------------------|--|
| School Siting | Safety and Access to Schools | Events and Training | Resources and Best Practices |
|-------------------------------|--|-------------------------------------|--|

About Community Schools and Transportation

In 2013, the Regional Transportation Council adopted a Policy Supporting School Districts, encouraging participation in activities and programs such as the Clean School Bus Program, school siting coordination, and programs that advance the safety of children traveling to and from school.

RESOURCES

[RTC Policy Supporting School Districts](#)

[Technical Assistance](#)

[Mobility 2035 Plan: Sustainable Development](#)

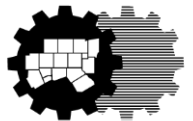
Select Language ▼



INTRODUCTION TO SCHOOL SITING (TIGER Task 2)

Kathryn Rush

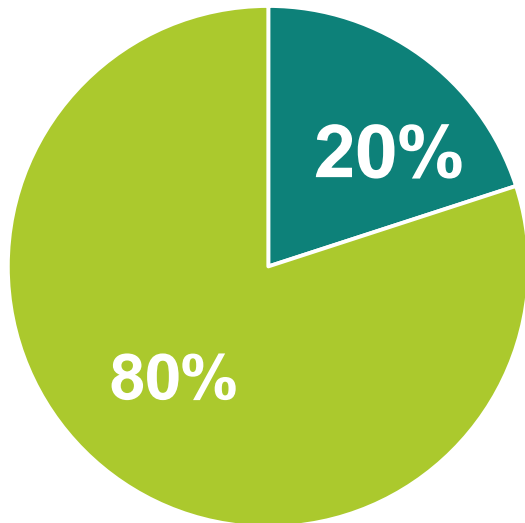
Community Schools and
Transportation Program



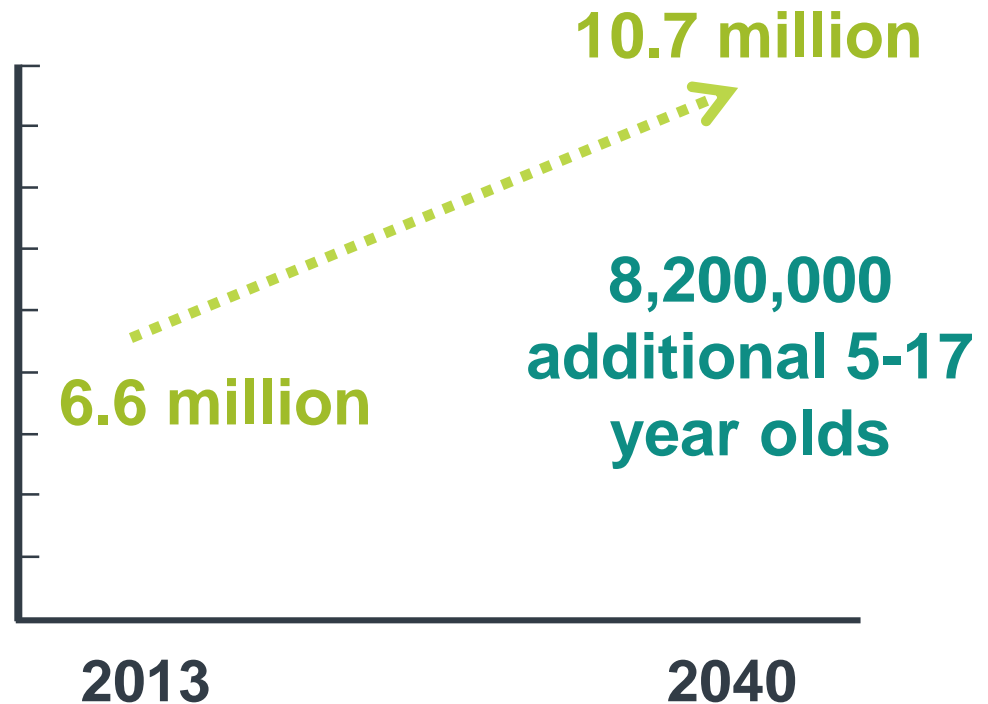
North Central Texas
Council of Governments

The Challenge We Face...

2013 Population (12-County MPA)



- 5-17 Age Group
- All Other Ages



» ***How will we accommodate approx. 1,000 new schools?***

What is School Siting?

The process by which a decision is made on where to locate schools, either by:

1. Building a new school
2. Renovating an existing school
3. Closing/consolidating existing schools

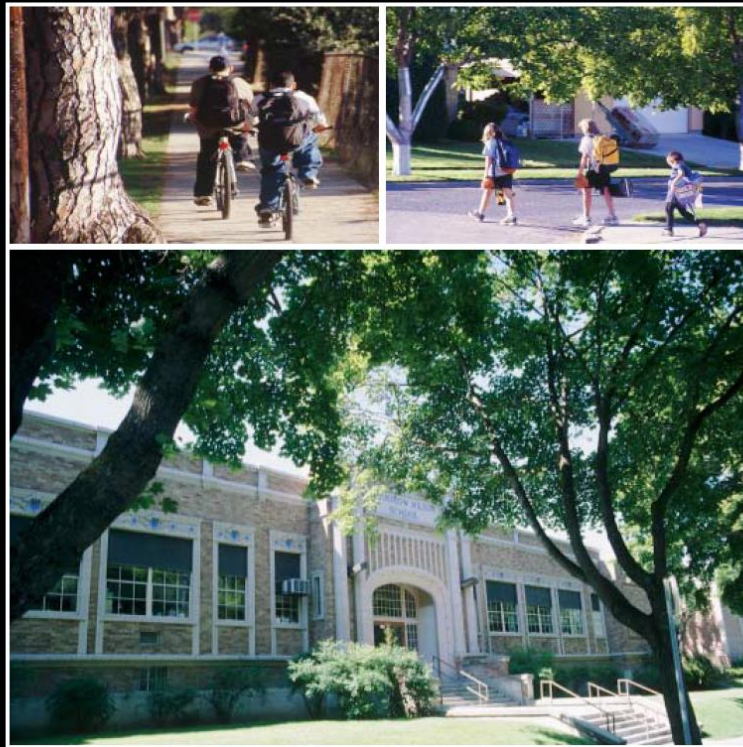
...And the layout of the school site.



Highland Park High School

Why Can't Johnny Walk to School?

Why Johnny Can't Walk to School



#1: Increasing School Size

(Enrollment Capacity and Sq. Ft. Per Student)

- » Economies of scale
- » Expanded technology, sciences, athletic facilities
- » Parking and setback requirements
- » Minimum acreage standards



CEFPI 1953-2004 Acreage Recommendations

| | | | |
|--------------------------|-----------------|---|--|
| Elementary School | 5 acres |  | Plus one acre for each 100 children in FTE (full-time enrollment) |
| Middle School | 20 acres | | |
| High School | 30 acres | | |

(Note: 2004 CEFPI Guidelines removed minimum acreage recommendations, endorses a flexible approach)

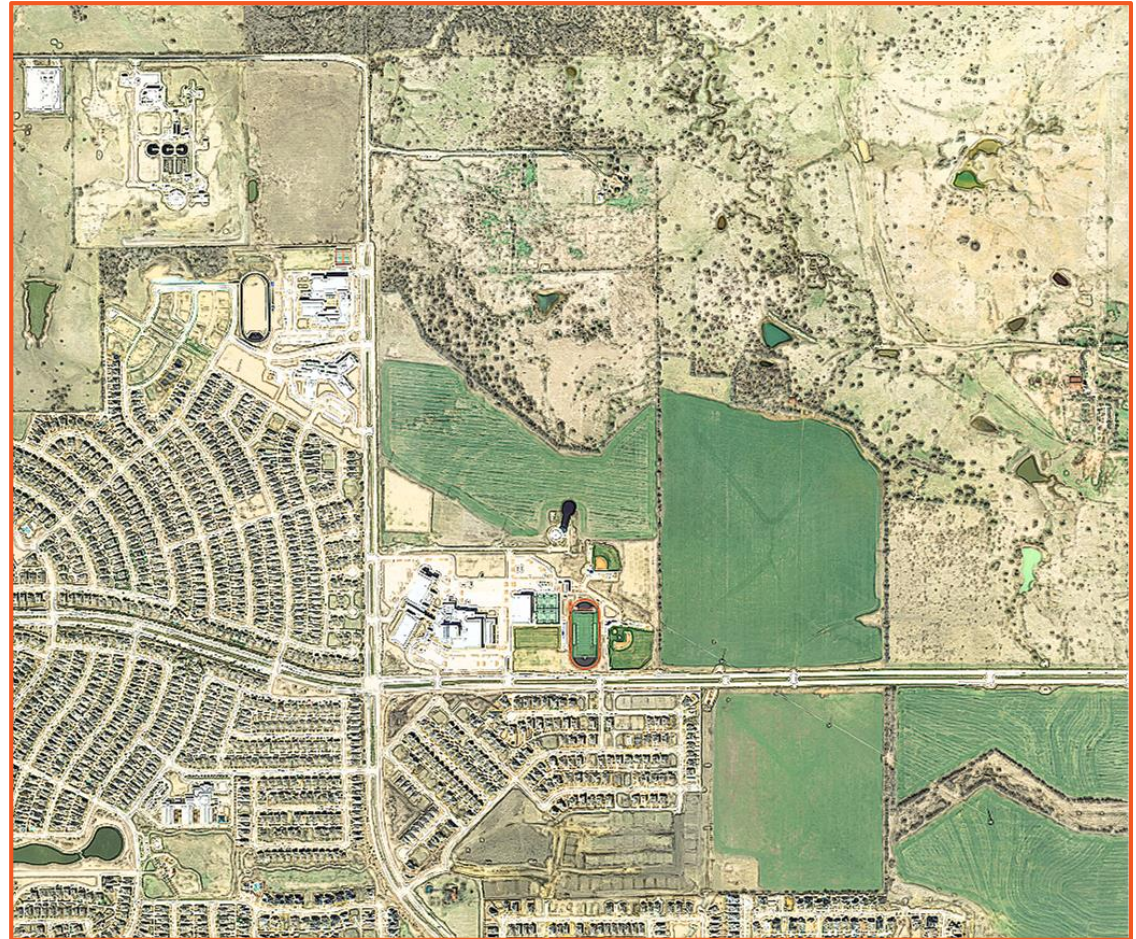


Source: Georgia Conservancy, "Old School, New School, This Place, That Place"

#2: Locating Schools Far From Students, on the Urban Fringe

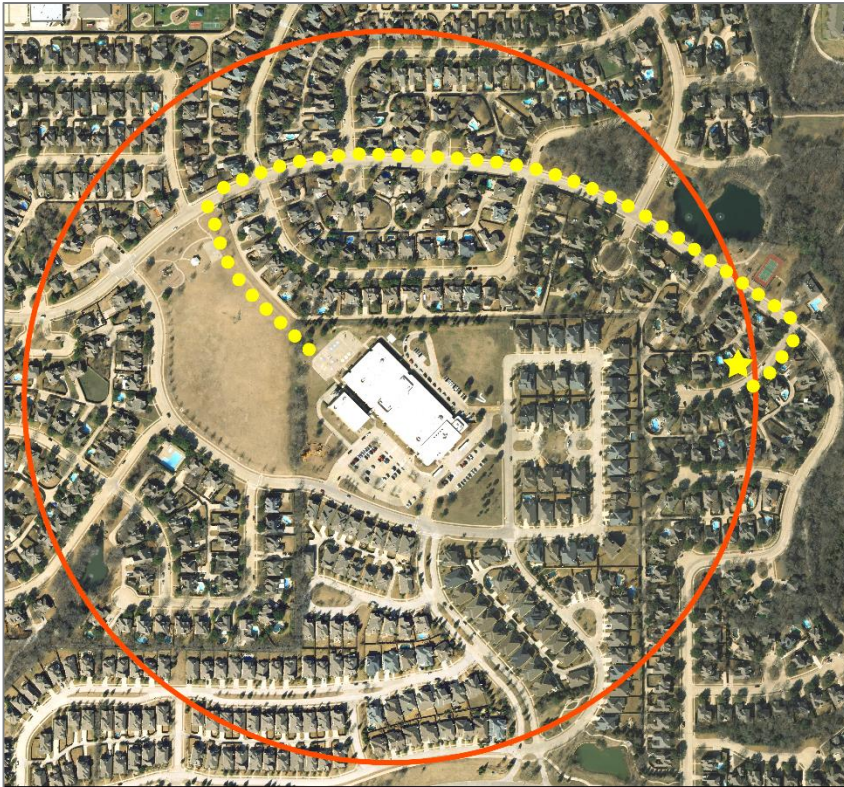
- » Parcel size
- » Land availability
- » Land cost

47 percent of students in the DFW region live more than two miles from school.

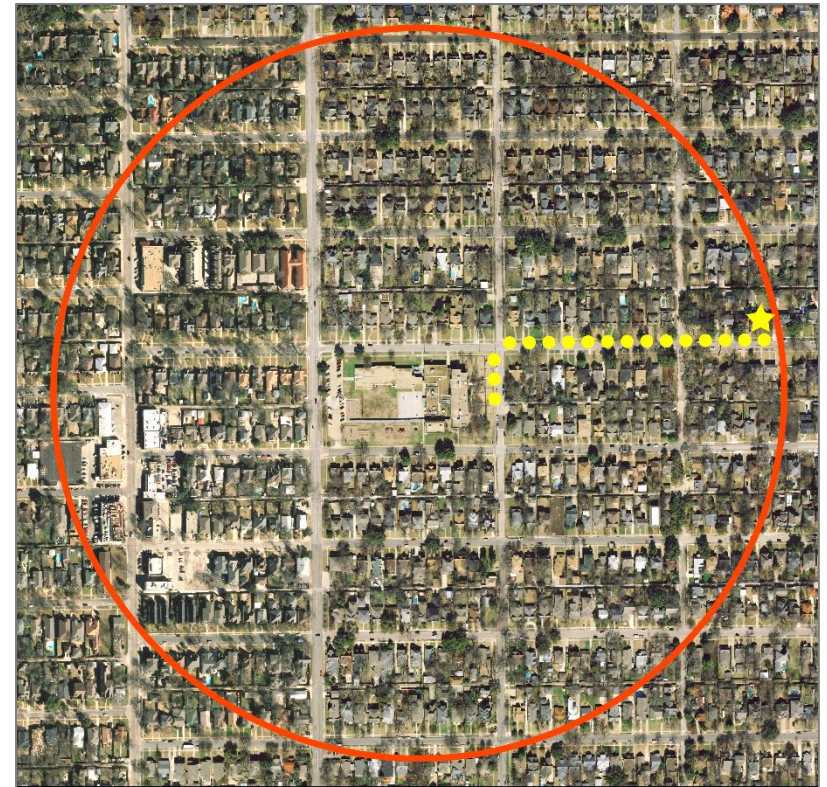


#3: Low “Pedestrian Route Directness” around Schools

Typical Subdivision
Street Network

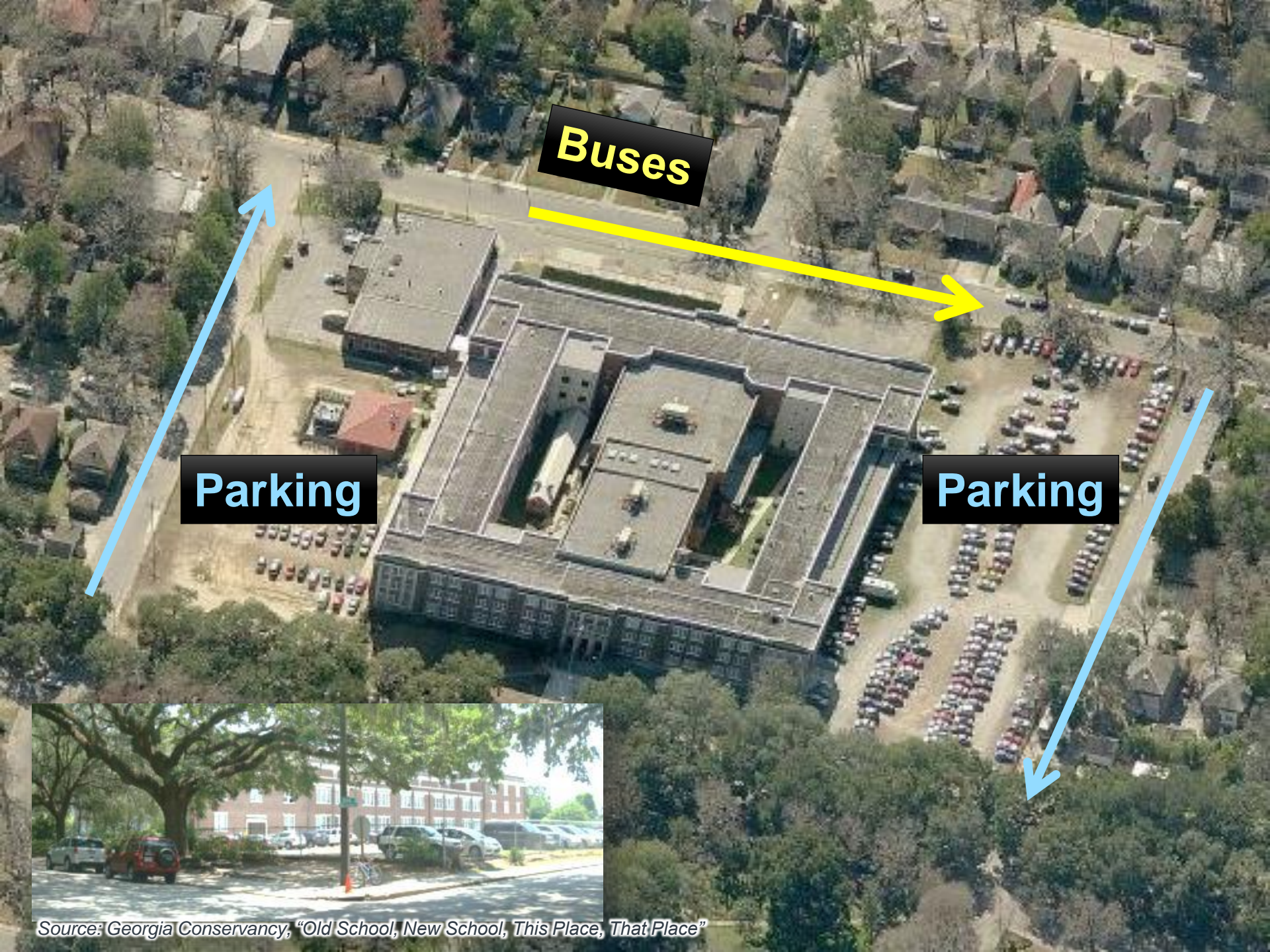


Well-Connected
Street Grid



...But the same also applies to traffic circulation





Buses

Parking

Parking



Source: Georgia Conservancy, "Old School, New School, This Place, That Place"

#4: Locating Schools on Unwalkable Roads

A pedestrian hit at 40 mph has an 85 percent chance of being killed.

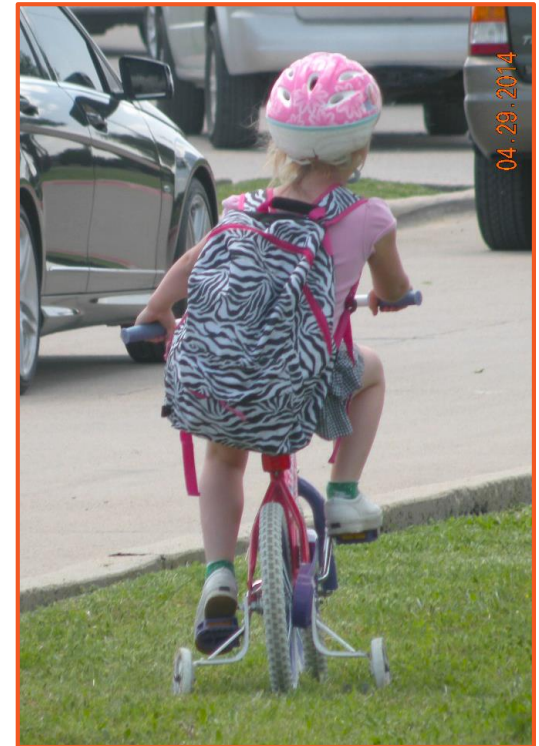
At 20 mph the fatality rate is only five percent.



Do you want to cross this?



#5: No Sidewalks or Crosswalks



#6: Separate Parallel Planning Efforts: School Planning and Community Planning

School Planners

- Plan schools
- Project enrollment change
- Develop strategic or operating plan (5-10 year horizon)
- Focus on transporting students by bus

City Planners

- Plan everything else
- Project population/employment change
- Develop comprehensive plan (20 year horizon)
- Focus on all modes of transportation

Unintended Consequences of School Siting Decisions

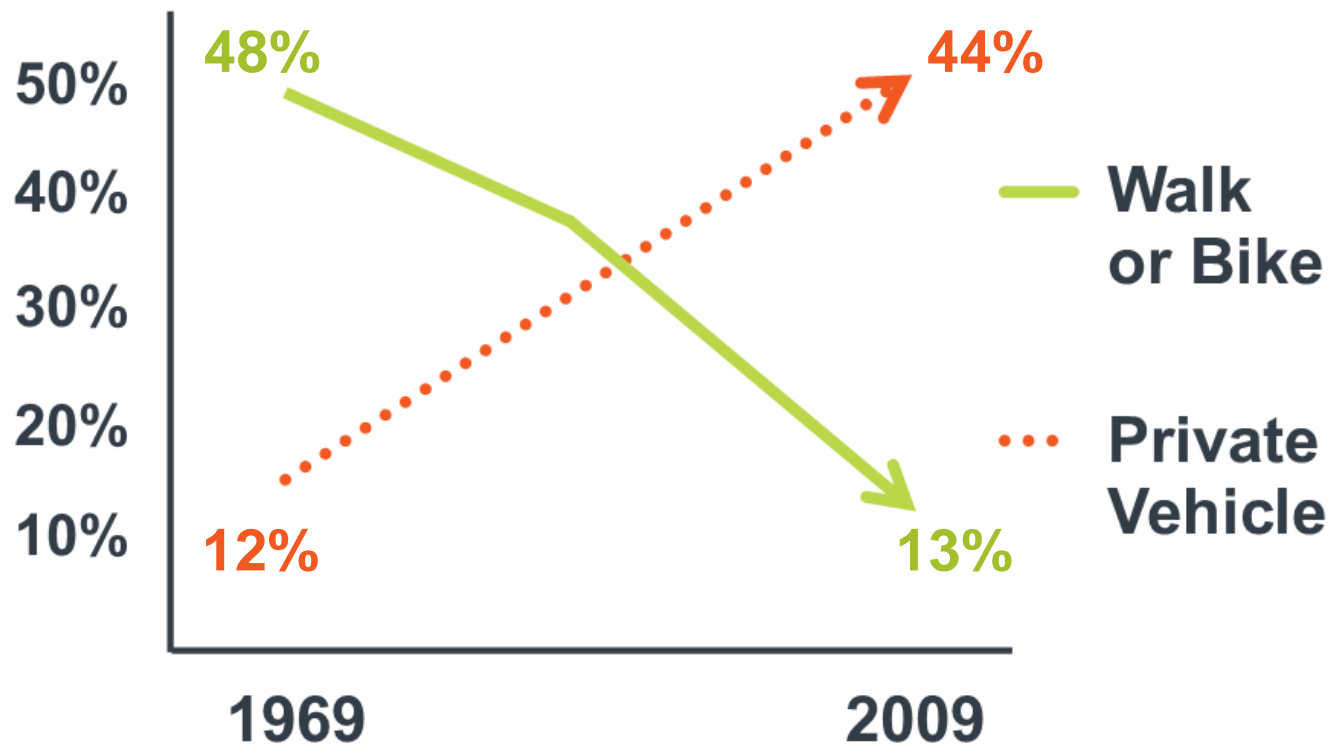
Social: Schools located on fringe →
Outward migration →
Racial and economic segregation,
disinvestment in existing neighborhoods

Fiscal: Increased cost of infrastructure (roads, sewer, water) and services (student busing).

Education: More difficult for students to participate in extracurricular activities (particularly students dependent on the bus to get to/from school).

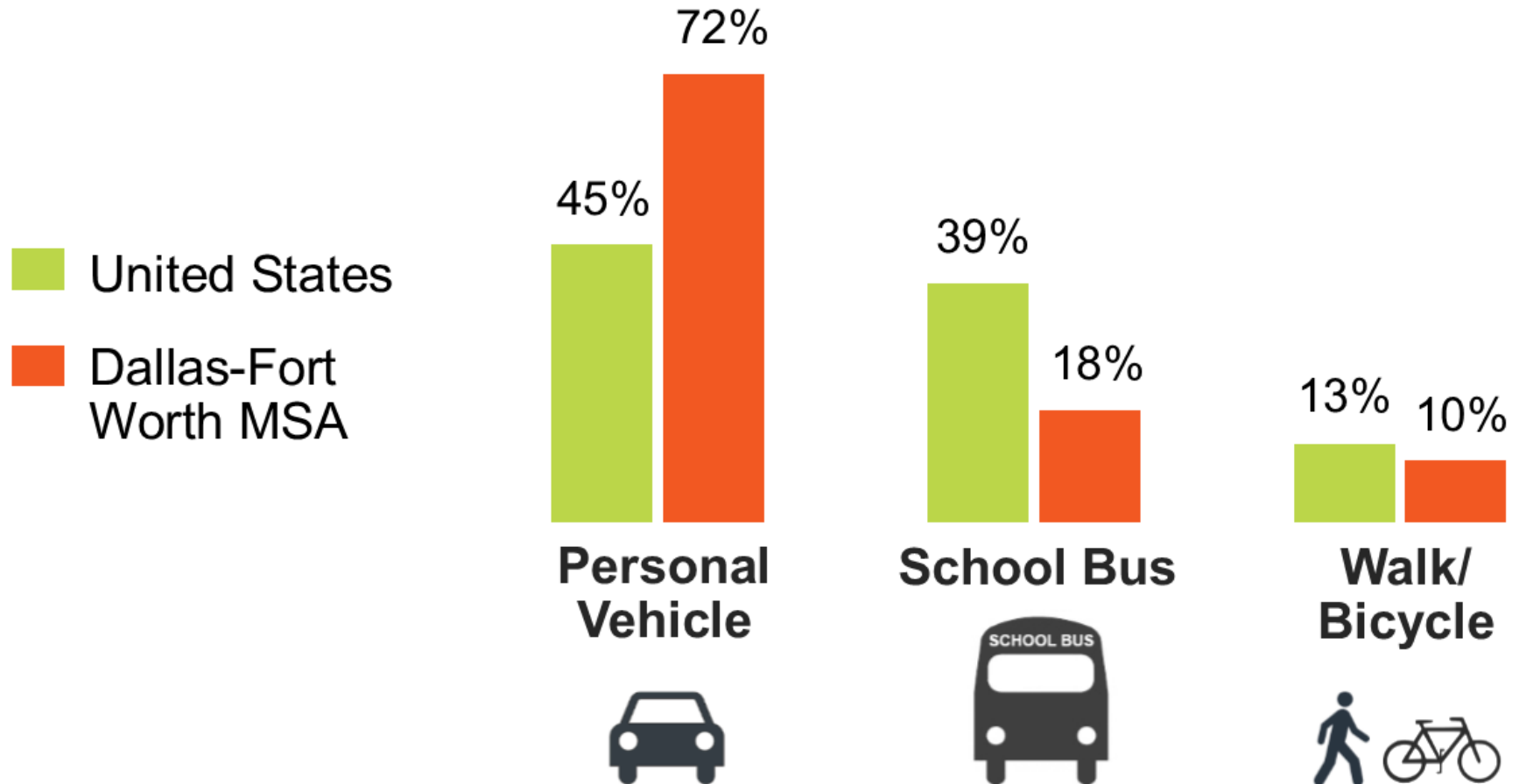
Decline in Walking and Biking to School

United States

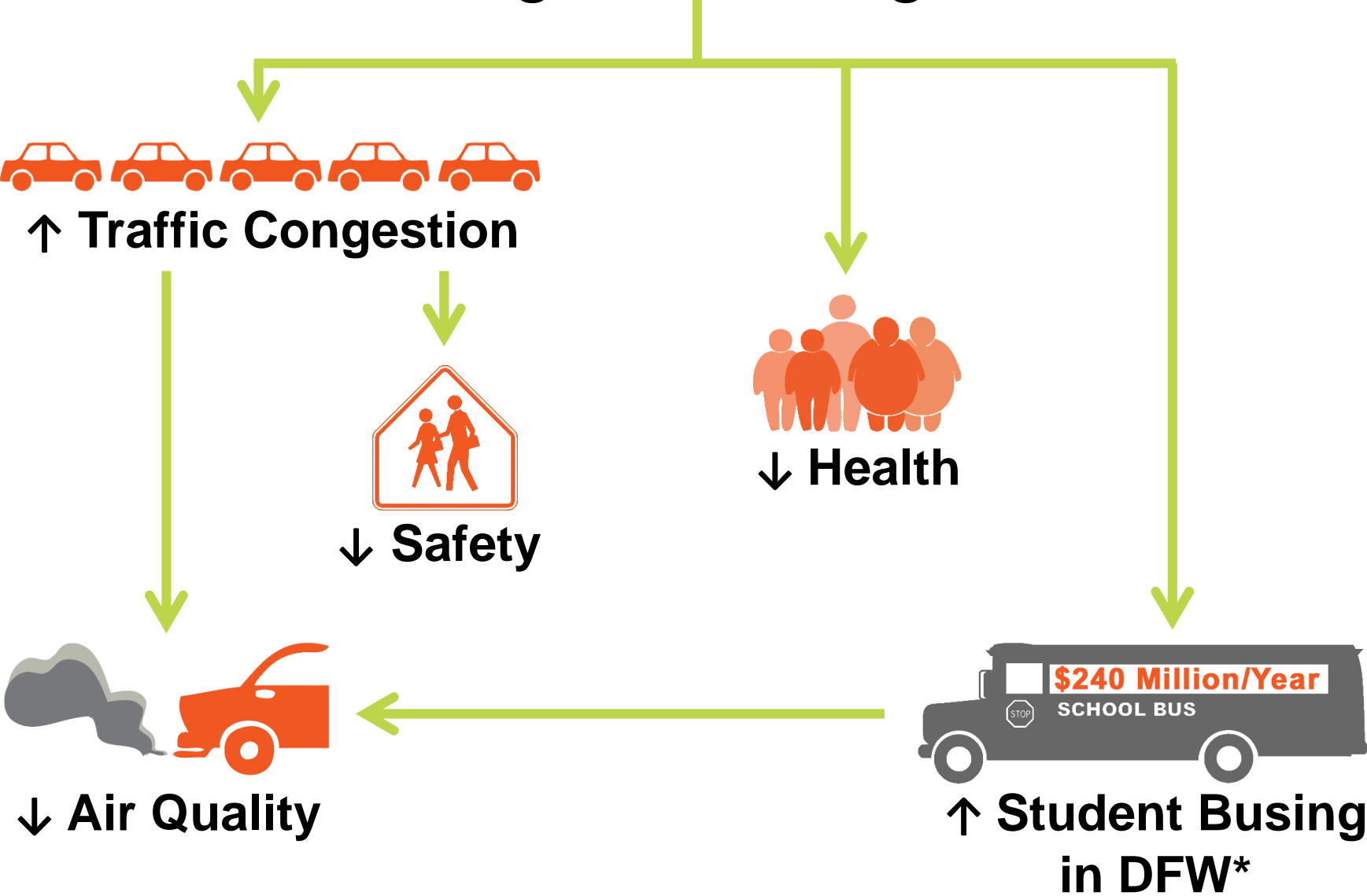


Decline in Walking and Biking to School

2009 Mode Share



Less Walking and Biking to School



*Source: Texas Comptroller, 2014.

The prevalence of obesity among children and adolescents more than **tripled** over the past 30 years.

In 2012, **more than one-third** of children and adolescents in the US were **overweight or obese**.



Opportunities

Coordinated Facility Planning

- » **All**: Regular meetings between district facilities personnel and local planning department to discuss proposed and upcoming projects. (Ex: capital facilities meetings)
- » **All**: Share data (e.g., GIS, demographic projections)
- » **School Districts**: Include members of local planning and transportation staff on facility committees
- » **Local Government**: Ensure that municipal planning addresses schools



| Educational Opportunities Action Statements | Status |
|---|------------------------|
| Meet on a yearly basis with the school district and Collin College staff to share demographic information and discuss changes in population. | IN PROGRESS |
| Assist school districts in identifying demographic attributes that could impact education requirements. | IN PROGRESS |
| Partner with local school districts to sponsor youth city council, mentoring programs, and support for civic government course work. | IN PROGRESS |
| Increase awareness of volunteer programs by connecting with local school districts and colleges to provide students community service opportunities. | IN PROGRESS |
| Evaluate the possibility of sharing facilities in areas of the city going through the cycle of reduced numbers of school children. | IN PROGRESS |
| Update the Facility Siting Guidelines and adopt as a supplementary document of the Plano Tomorrow plan. | PENDING |
| Provide volunteer opportunities with local government agencies (City of Plano, Plano ISD, Collin College, Collin County) for city residents to develop employment skills and work experience. | IN PROGRESS |

Opportunities

School Siting

» School District:

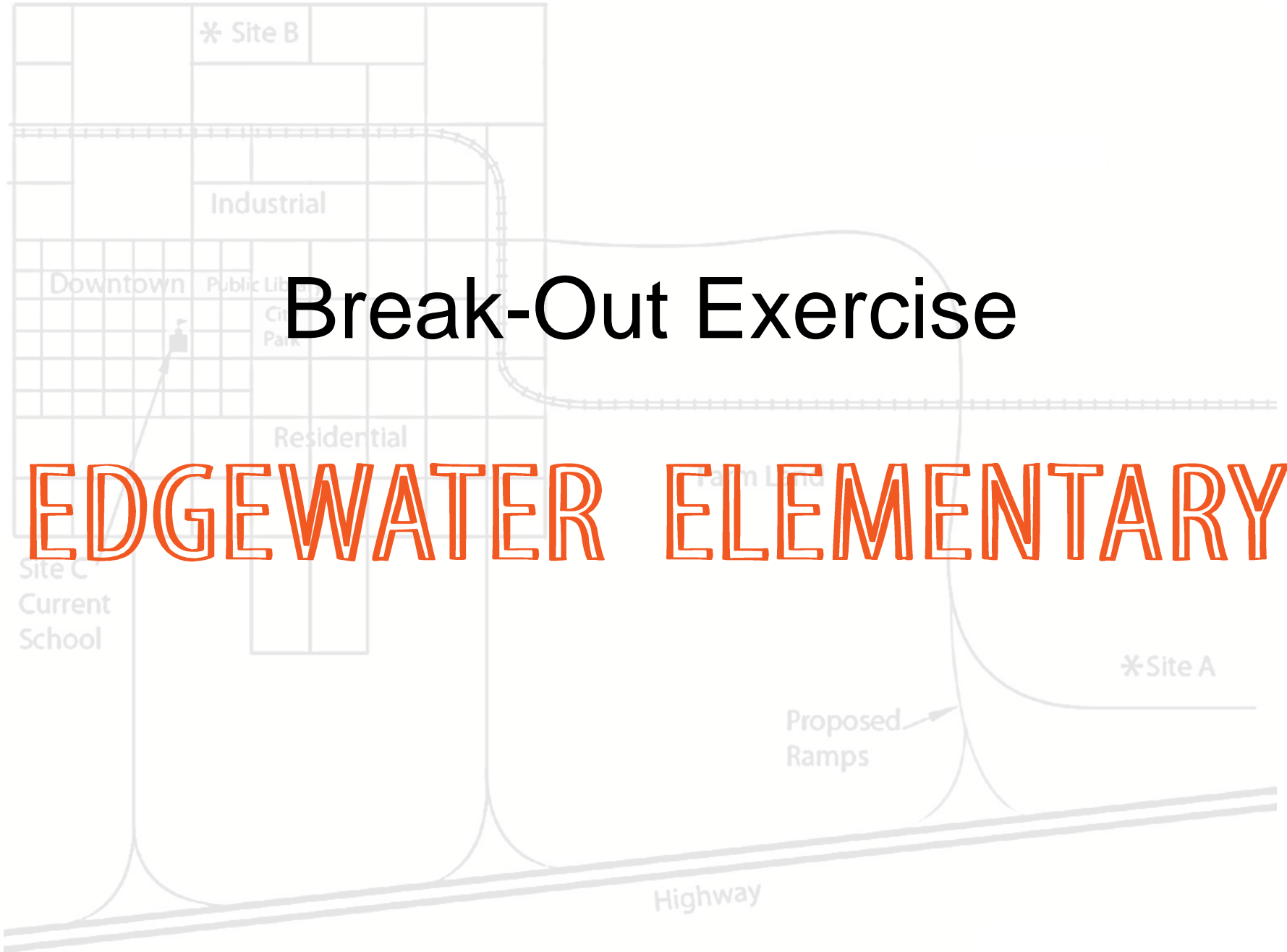
- Account for all costs/benefits of different school siting options.
- Engage in long-term, data-driven planning.
- Reconsider minimum acreage standards.
- Design school attendance policies to balance diversity and walkability.

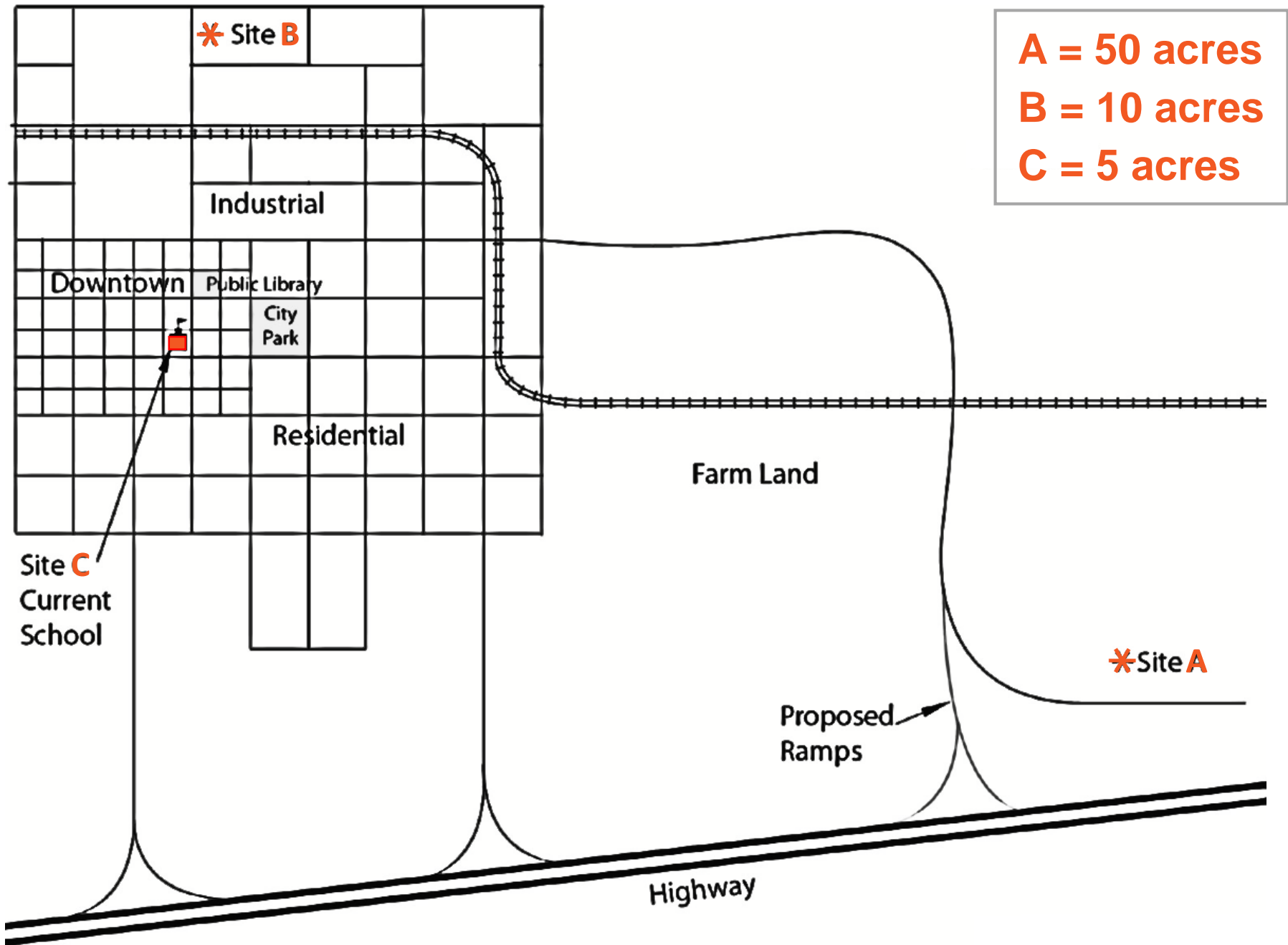
» All:

- Plan for the reuse of closed school facilities.
- Consider co-location and shared use of facilities (e.g., libraries, parks, athletic fields, etc.)

Break-Out Exercise

EDGEWATER ELEMENTARY





Directions

- » Review information for each site (may be helpful to have one person read aloud)
- » Designate team member as note-taker – record pros and cons of each site on Worksheet
 - If time permits, record any consequences and mitigation strategies related to each site
- » Conclude with a recommended site – A, B, or C.
 - Designate team member as a speaker to discuss site selected during Breakout Reports

In Summary...

There's no easy, one-size-fits-all solution when it comes to school siting decisions.



Contact Information

Karla Weaver, AICP

Program Manager

(817) 608-2376

kweaver@nctcog.org

Patrick Mandapaka, PhD, AICP

Principal Transportation Planner

(817) 704-2503

pmandapaka@nctcog.org

Kathryn Rush

Transportation Planner

(817) 704-5601

krush@nctcog.org



www.nctcog.org/schools

This presentation and accompanying exercise was inspired by:

- Georgia Conservancy, “Old School, New School” Workshop*
- “School Buildings and Community Building” 2010 presentation by Matthew Dalbey, U.S. EPA Smart Growth Program*