

Upper Trinity River

Water Quality Data Analysis

David Pendergrass

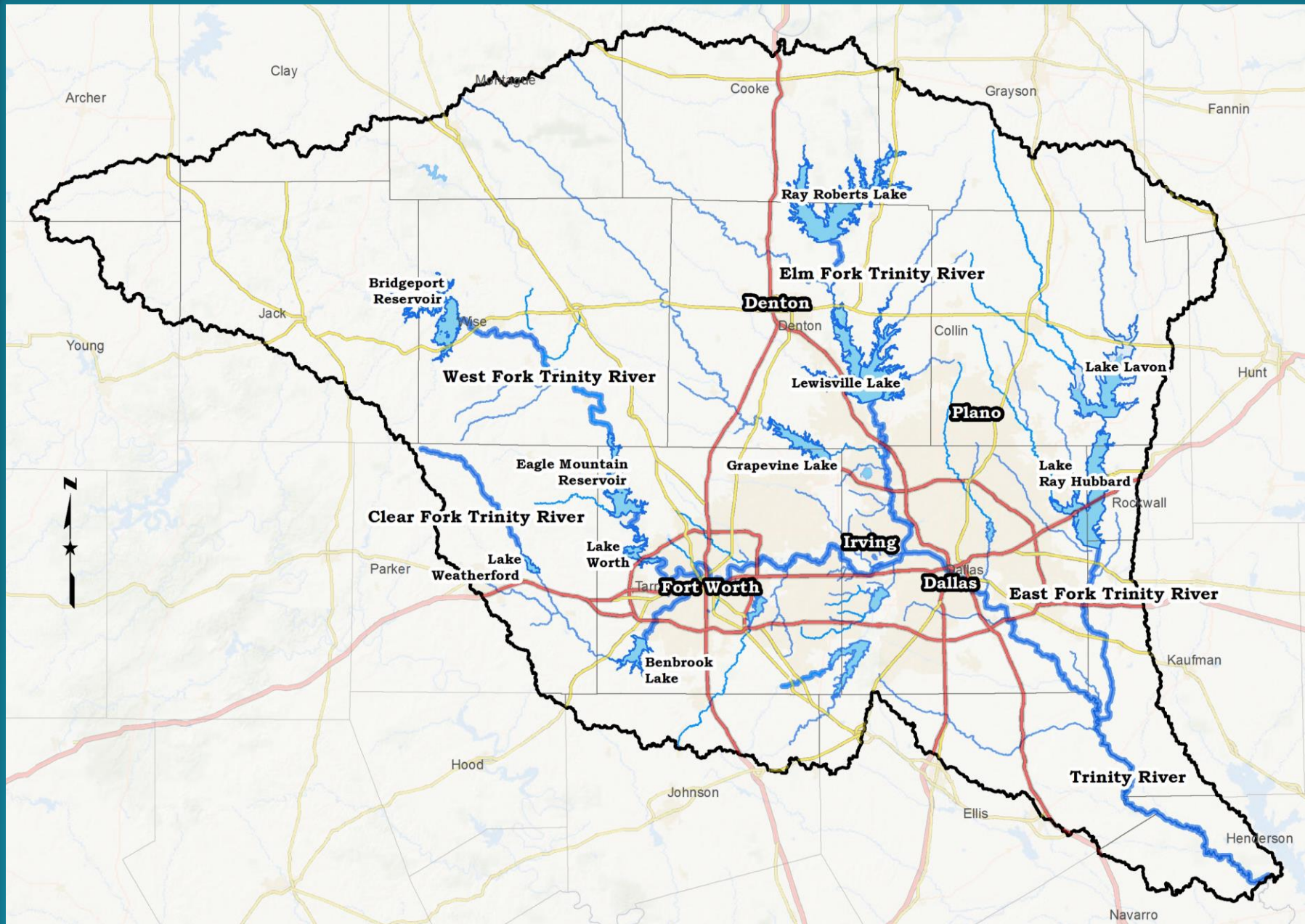
Assistant Research Scientist

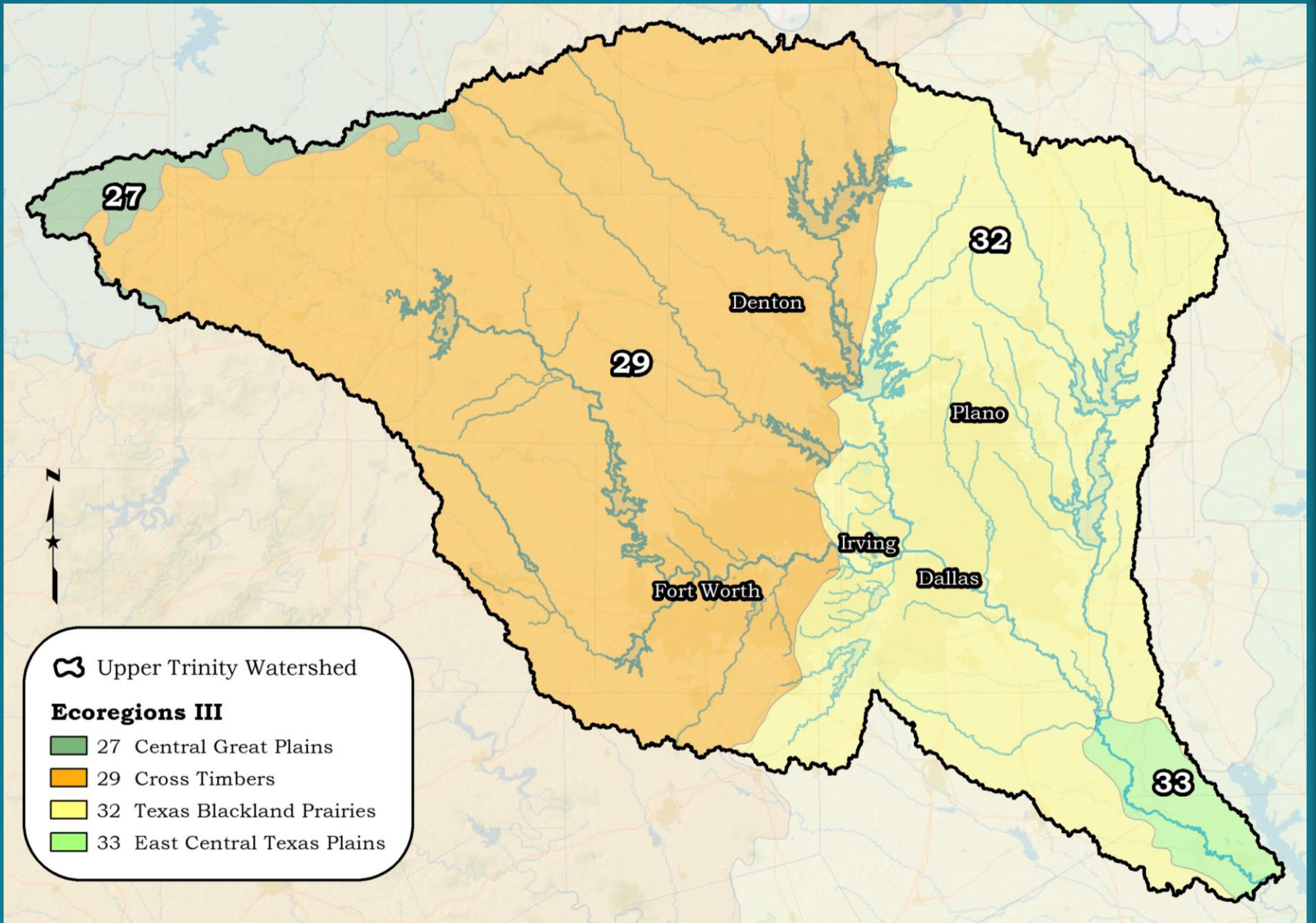
Texas Institute for Applied Environmental Research

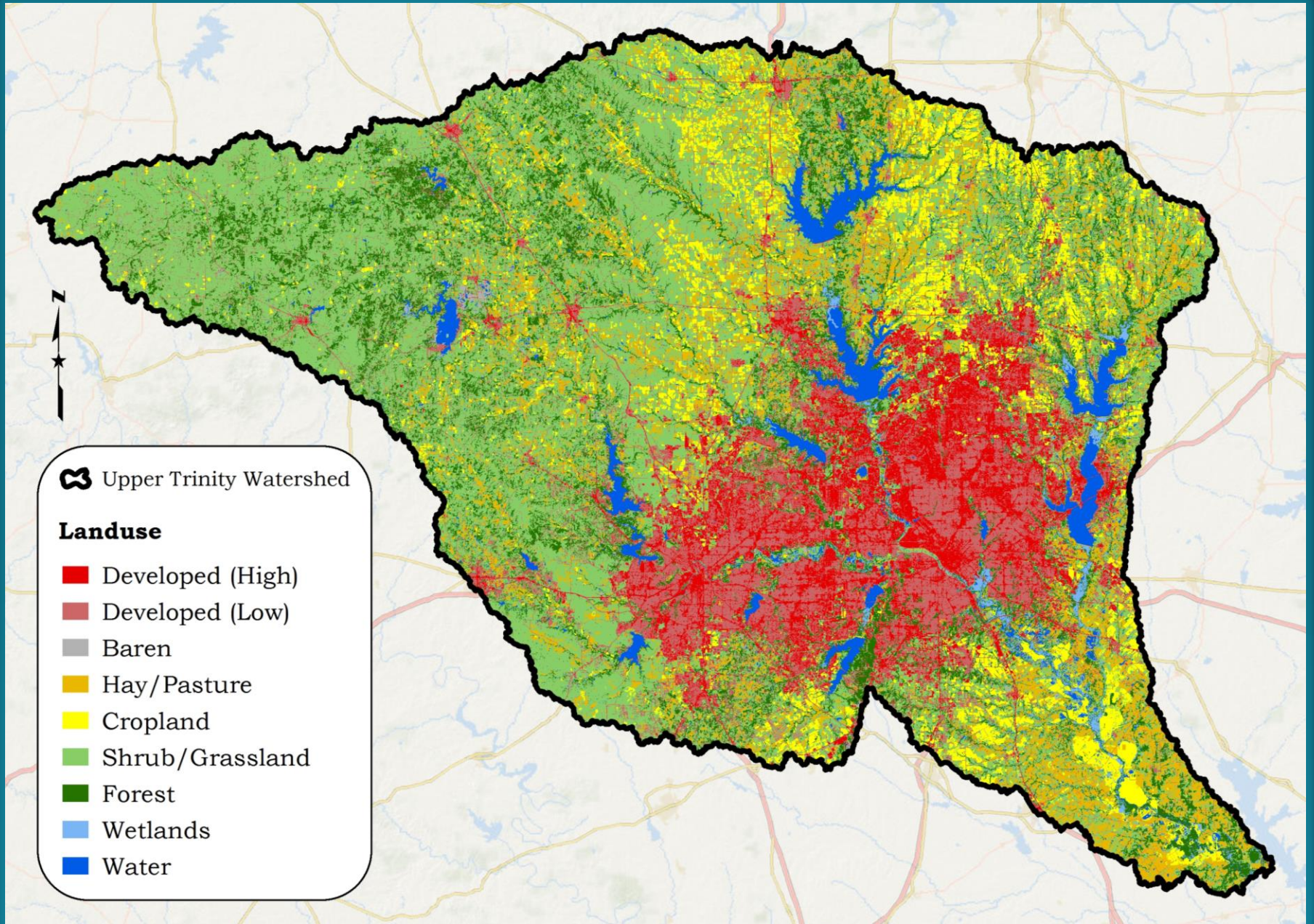
OUTLINE

- Geography
- Regional Groups
- *E. coli* Analyses
- Summary

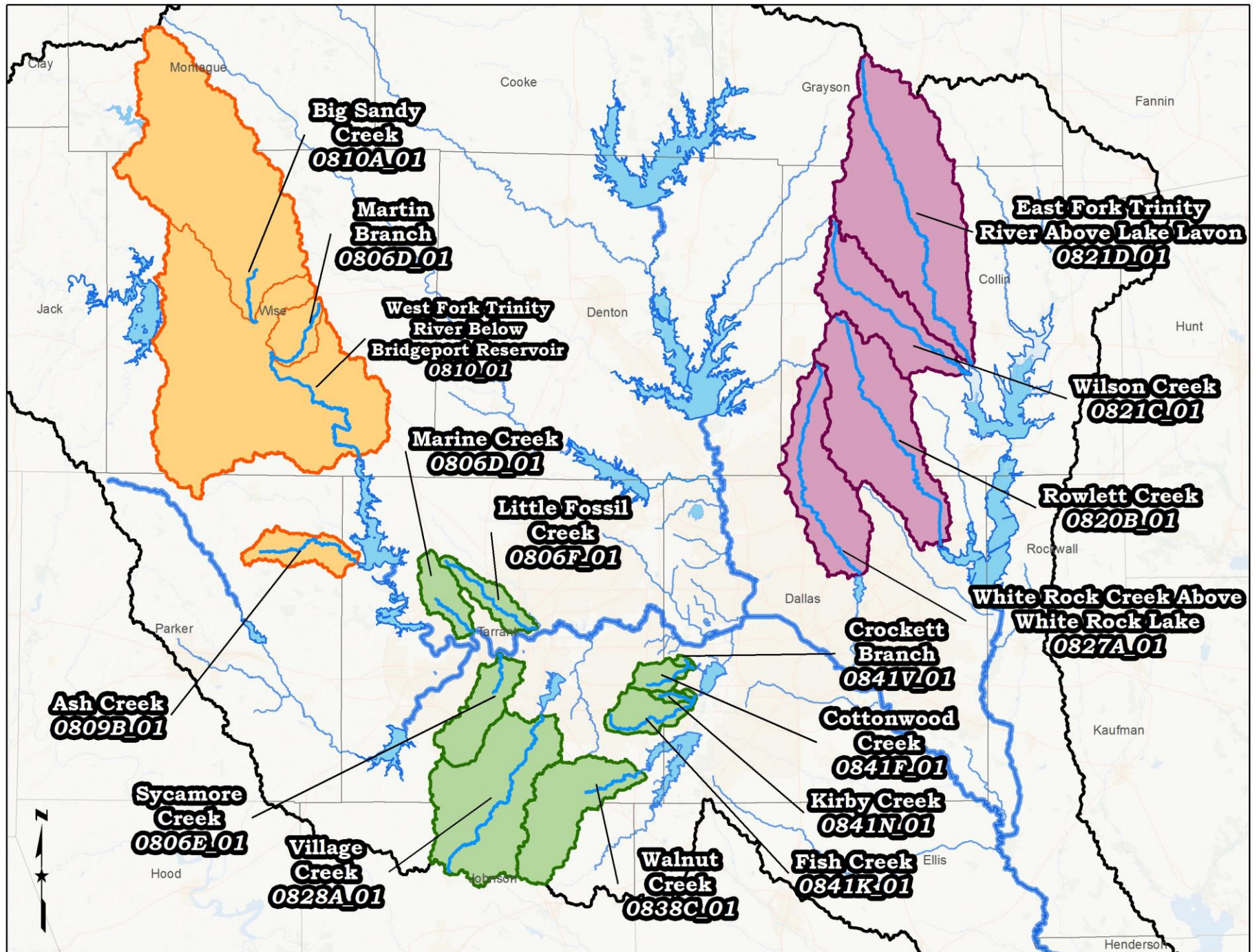
GEOGRAPHY







REGIONAL GROUPS



**Big Sandy
Creek
0810A_01**

**Martin
Branch
0806D_01**

**West Fork Trinity
River Below
Bridgeport Reservoir
0810_01**

**Marine Creek
0806D_01**

**Little Fossil
Creek
0806F_01**

**Ash Creek
0809B_01**

**Sycamore
Creek
0806E_01**

**Village
Creek
0828A_01**

**Walnut
Creek
0838C_01**

**Fish Creek
0841K_01**

**Crockett
Branch
0841V_01**

**Cottonwood
Creek
0841F_01**

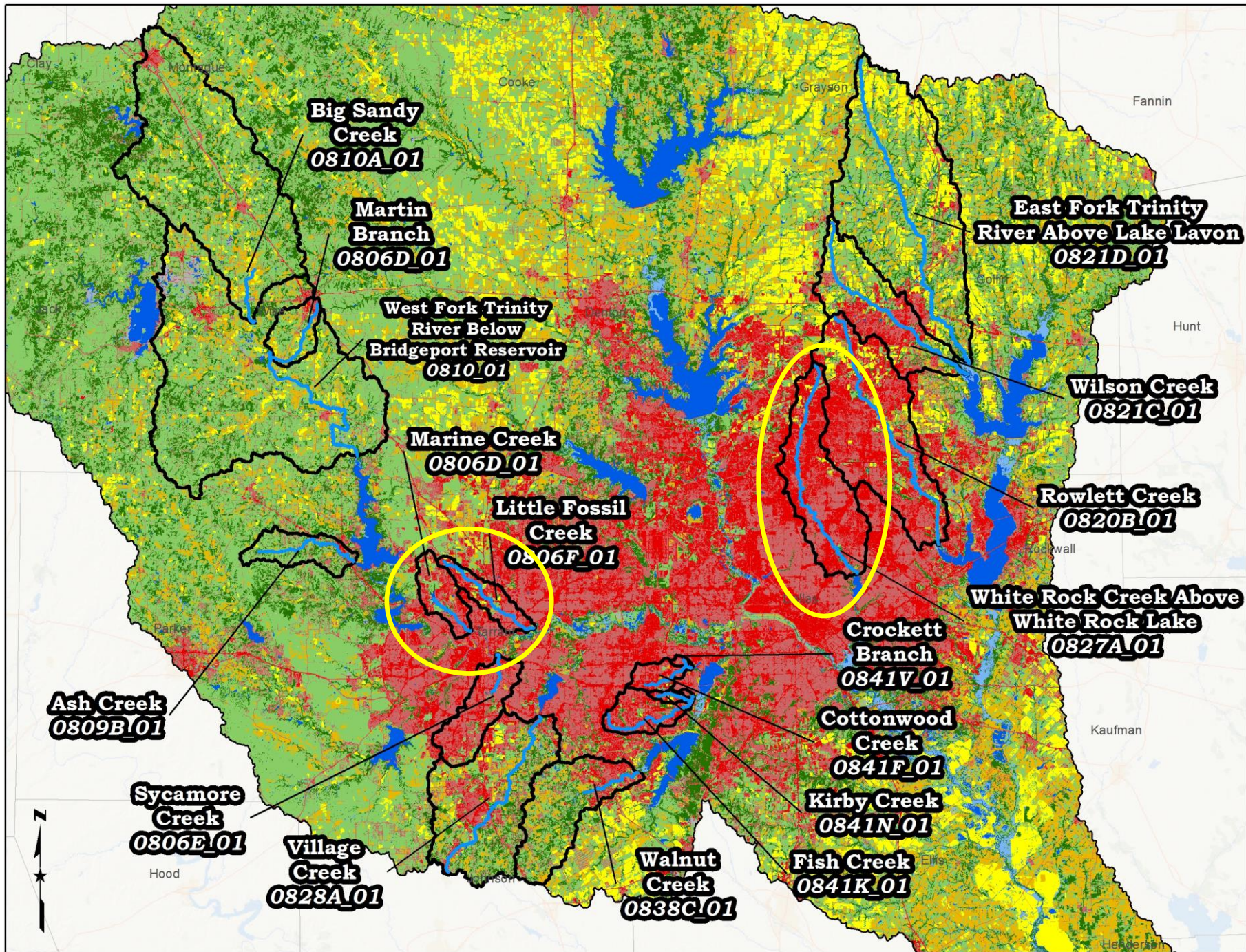
**Kirby Creek
0841N_01**

**East Fork Trinity
River Above Lake Lavon
0821D_01**

**Wilson Creek
0821C_01**

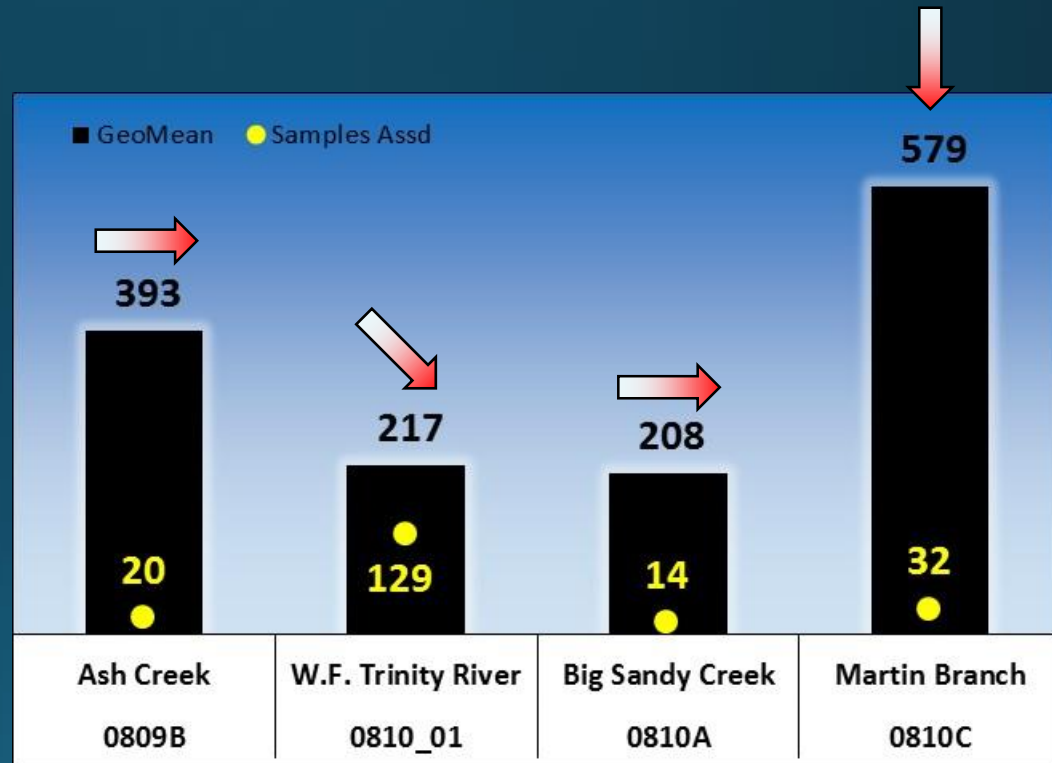
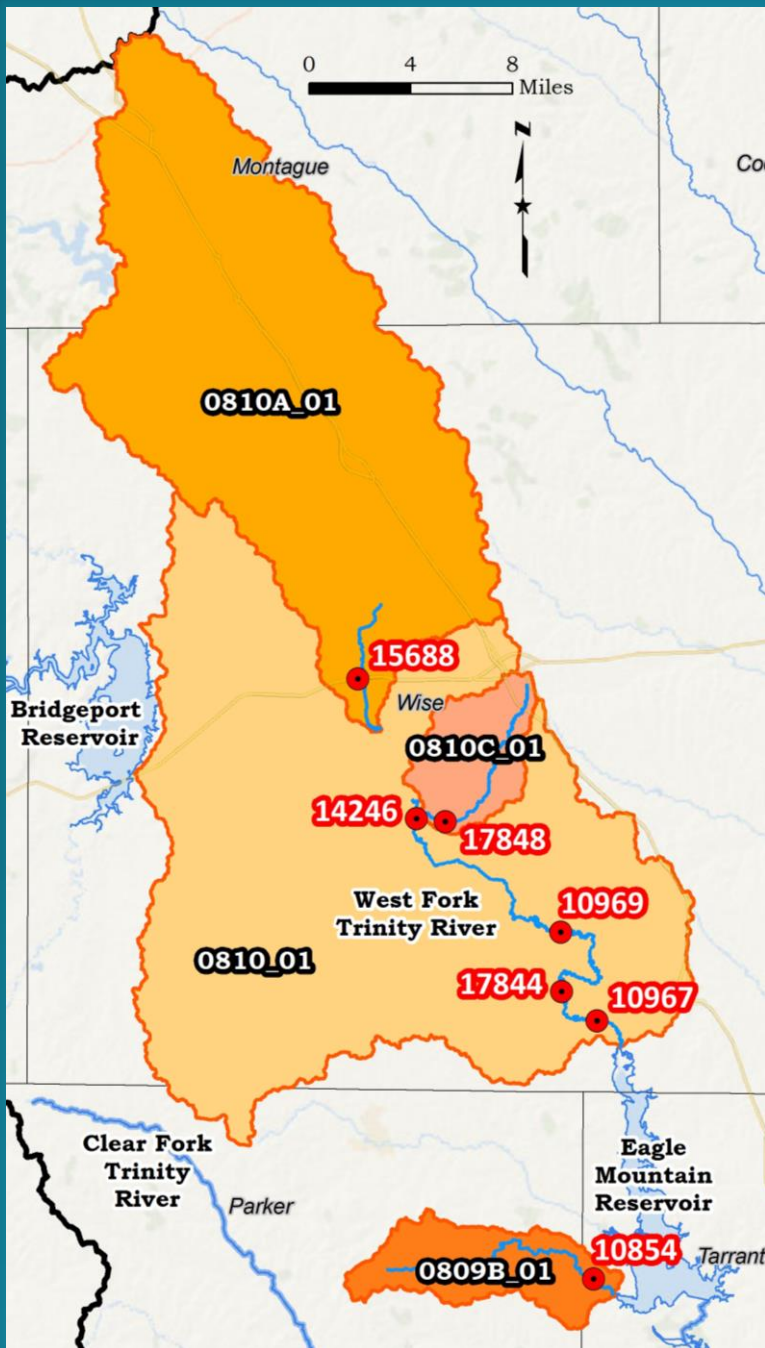
**Rowlett Creek
0820B_01**

**White Rock Creek Above
White Rock Lake
0827A_01**



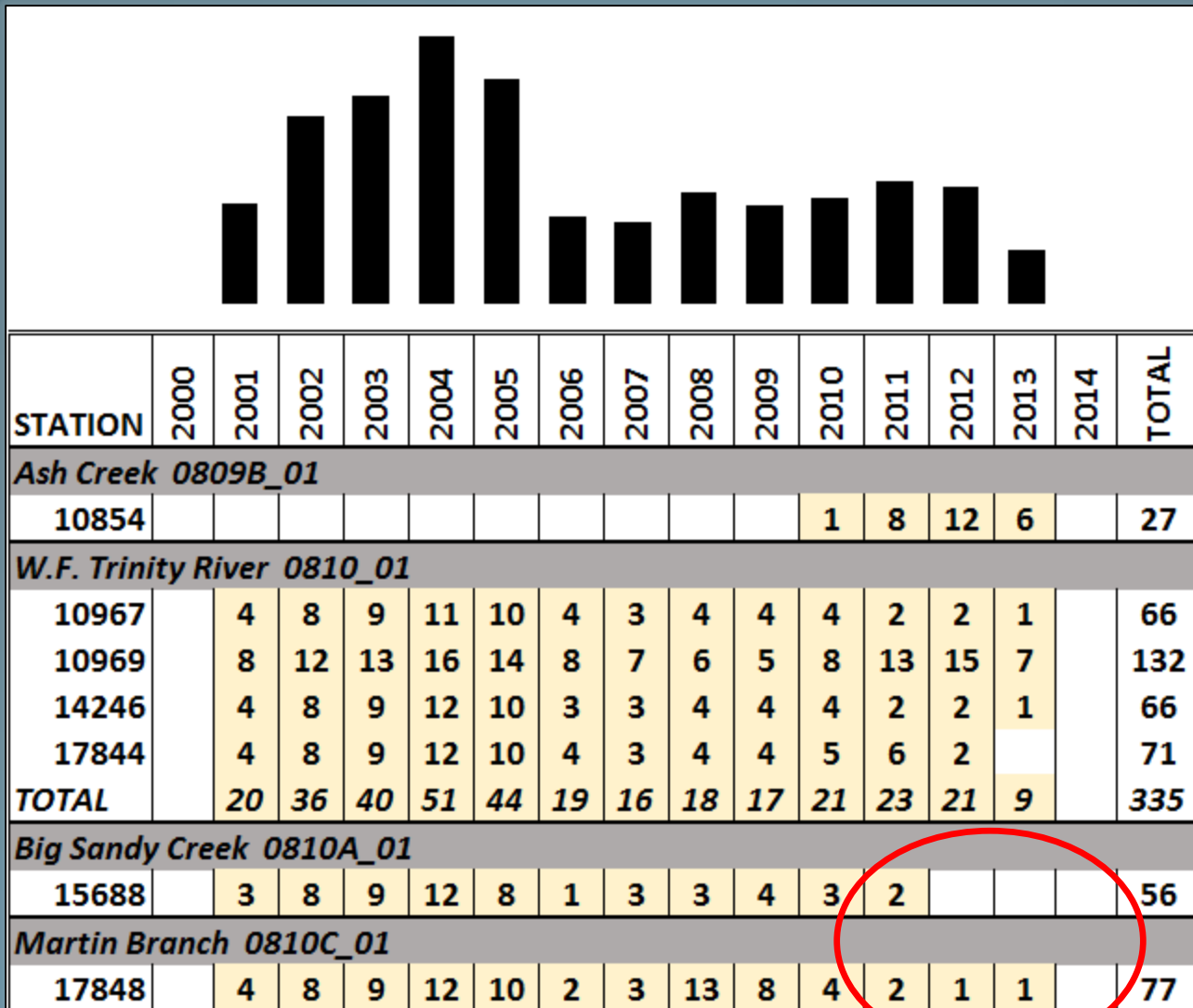
E. COLI
Analyses

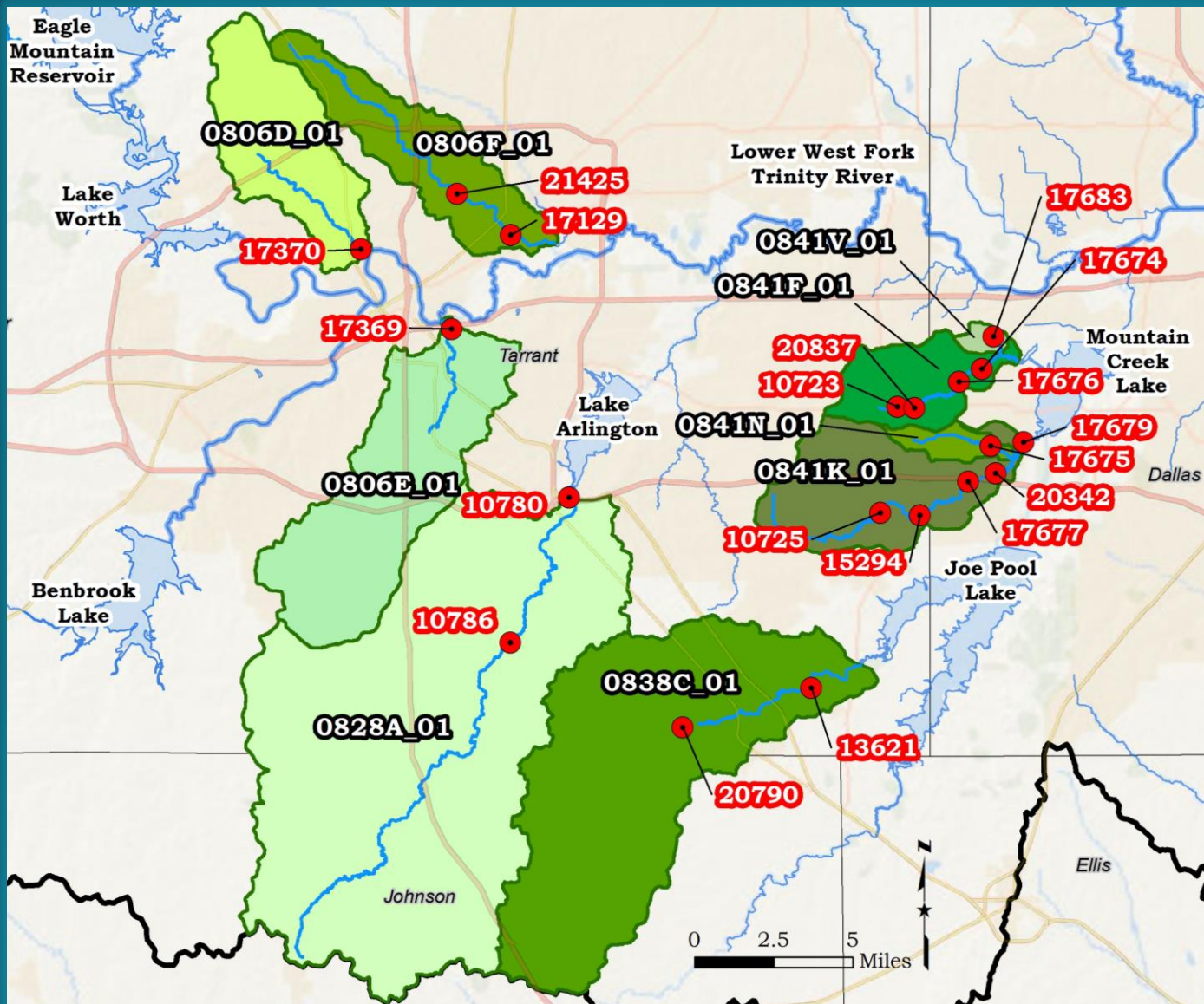
West Region 2014 Assessment



E. coli Criterion
Geometric Mean = 126 MPN / 100 mL

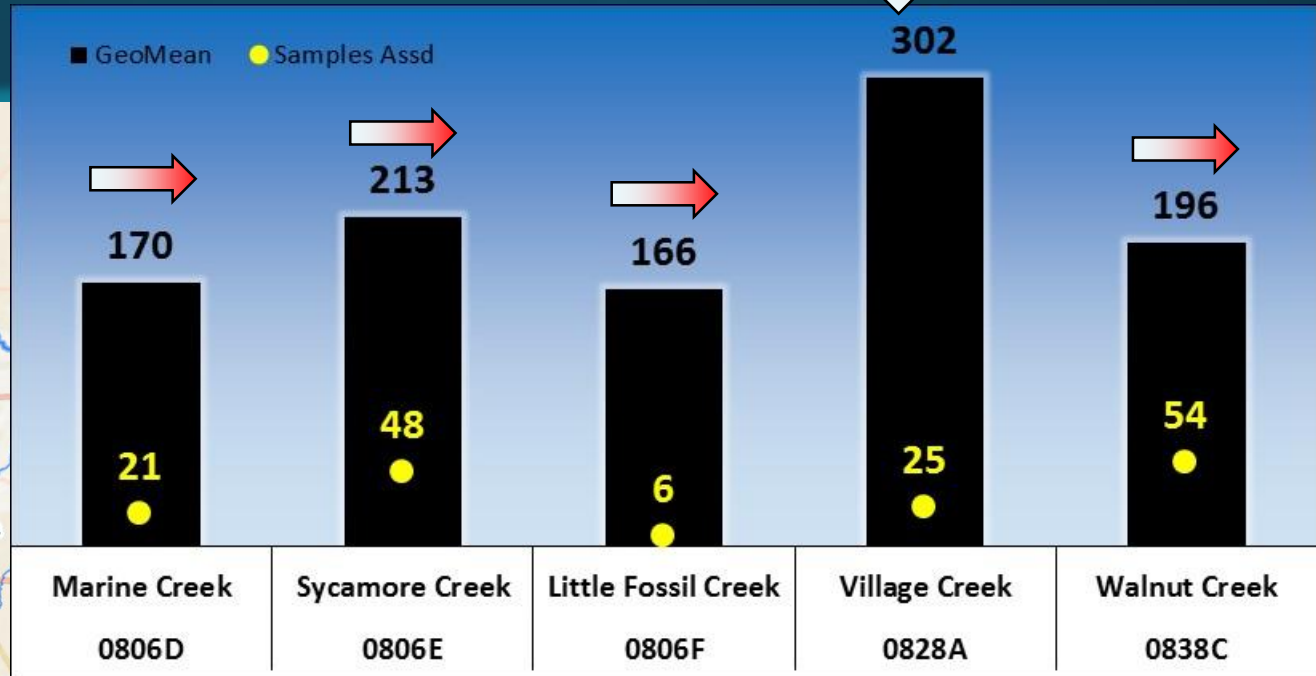
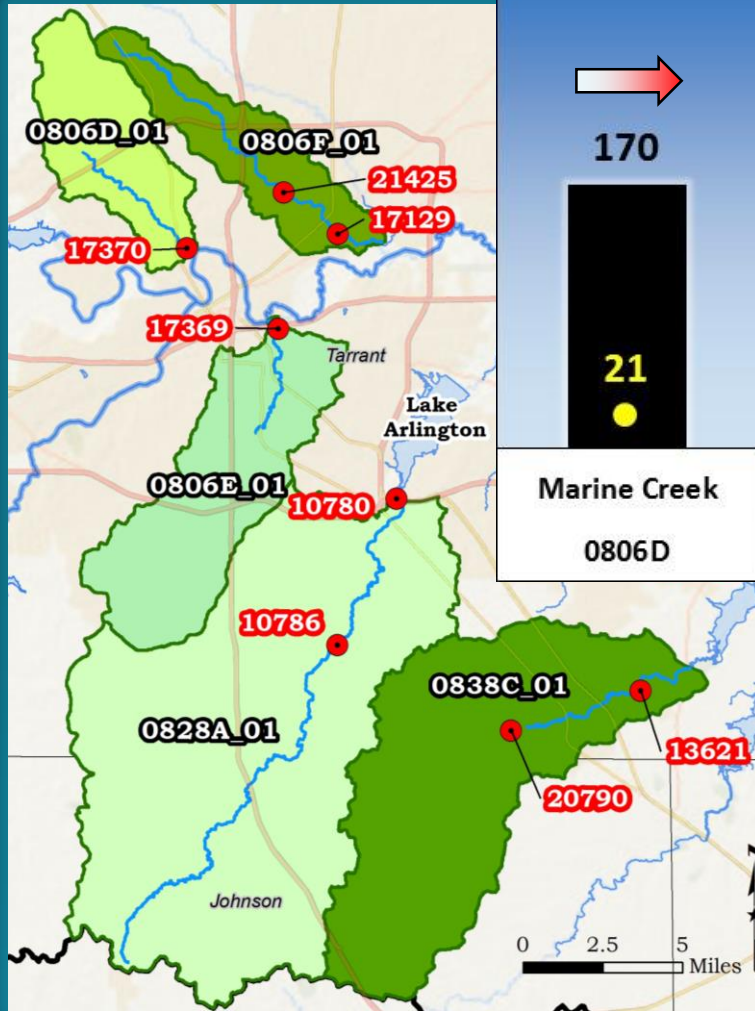
~ West Region ~ E. coli Samples by Year





South-Central Region 2014 Assessment

E. coli Criterion = 126 MPN / 100 mL



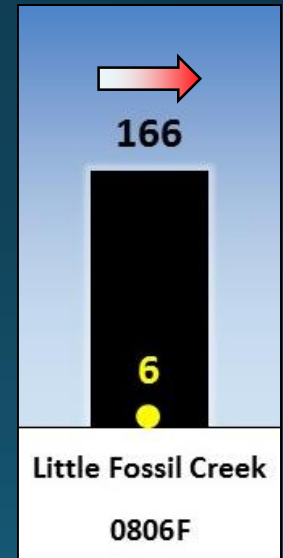
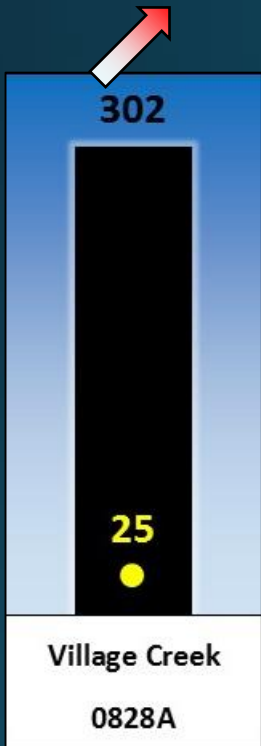
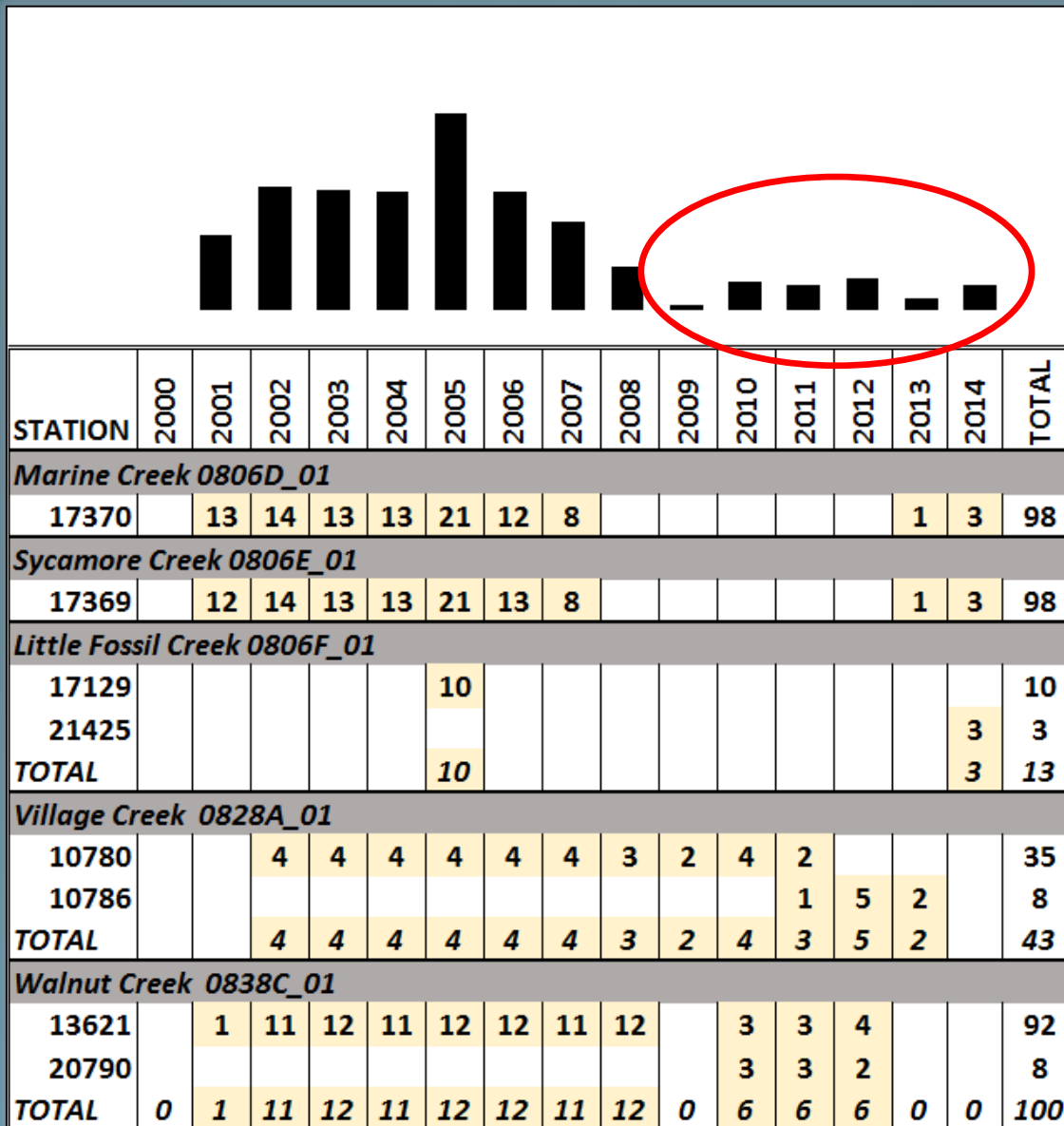
South-Central Region

Ft. Worth / Arlington

2014 ASSESSMENT

~~ MARINE CREEK~~
 Not Assessed in 2014 IR Draft
 Data from Dec 2005 – Aug 2007

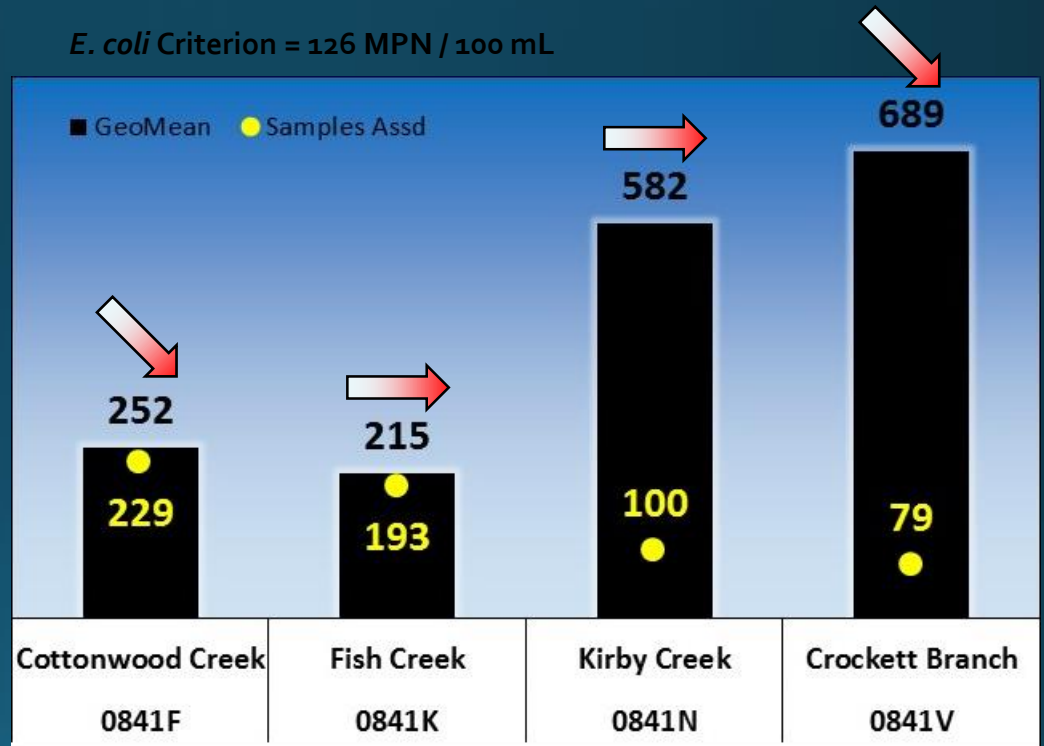
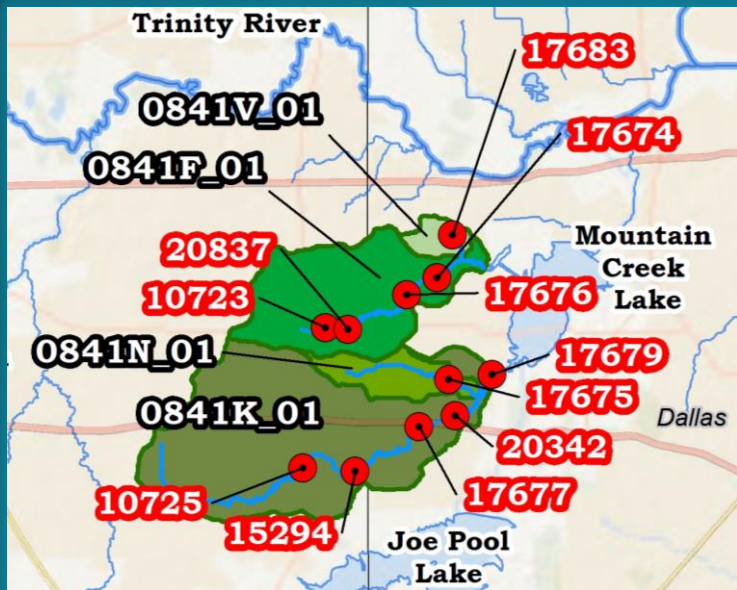
~ South-Central Region Ft. Worth / Arlington ~ E. coli Samples by Year



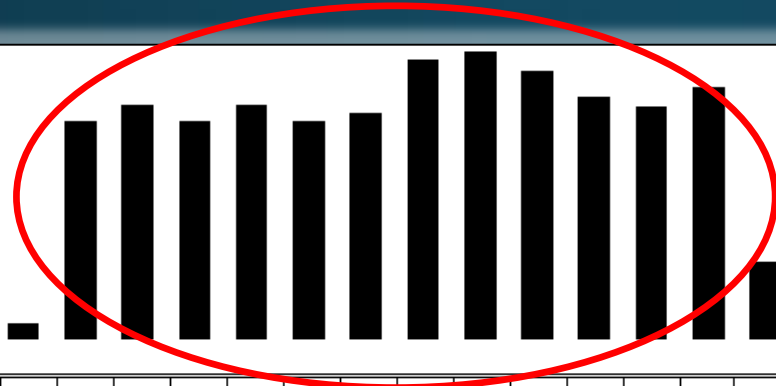
South-Central Region

Mountain Creek Lake Upstream Watershed

2014 ASSESSMENT



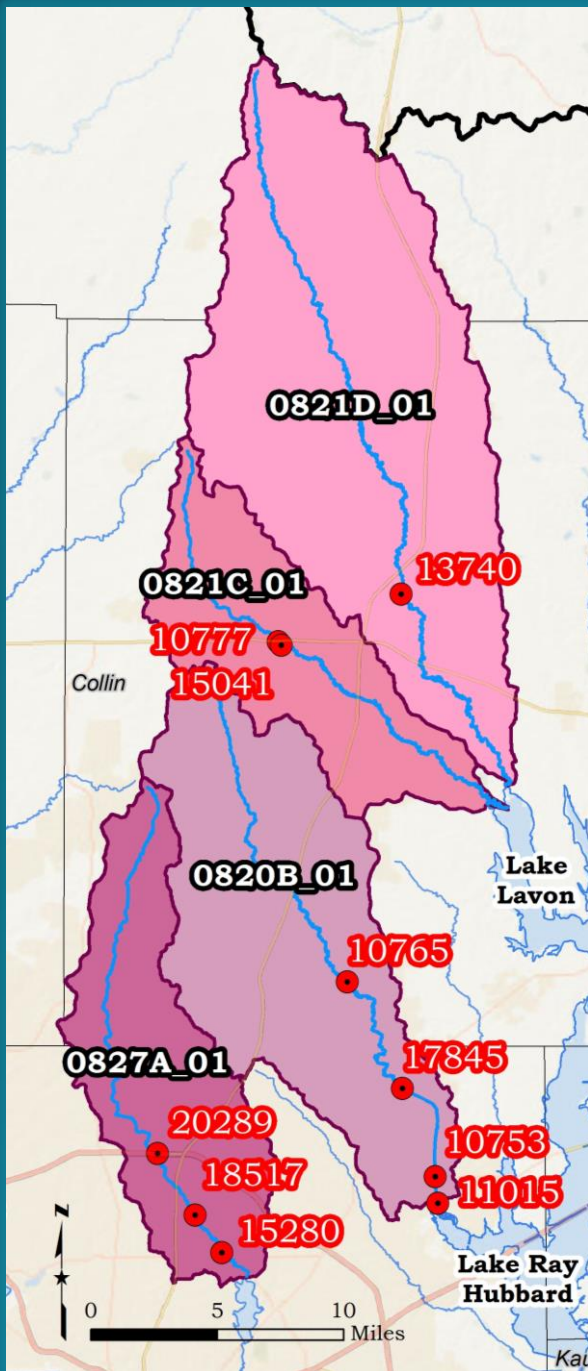
E. coli Samples by Year



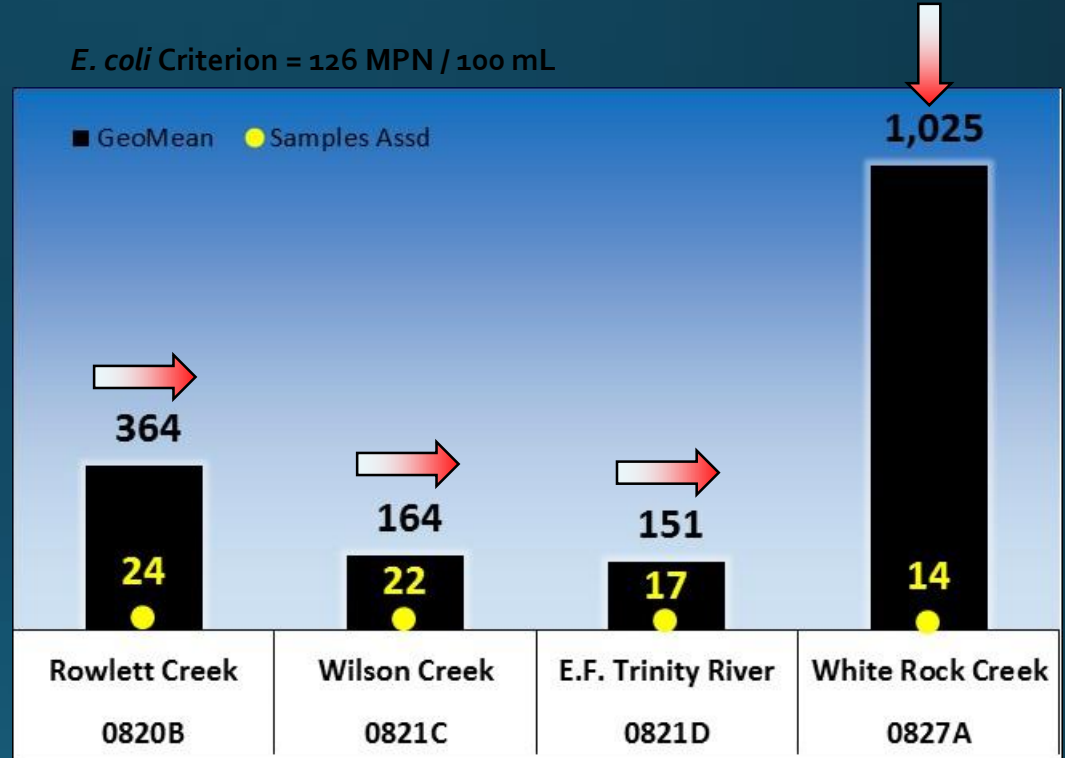
STATION	2000	2001	2002	2003	2004	2005	2006	2007	2008	2009	2010	2011	2012	2013	2014	TOTAL
Cottonwood Creek 0841F_01																
10723			4	4	4	4	4	4	2	2	4	2		2		36
17674		1	11	12	11	12	11	11	20	16	12	12	11	12	4	156
17676		1	11	12	11	12	12	12	12	12	12	12	13	12	4	148
20837										8	10	9	10	12	4	53
TOTAL		2	26	28	26	28	27	27	34	38	38	35	34	38	12	393
Fish Creek 0841K_01																
10724			4	4	4	4	3	4	2	2	4	2		2		35
10725			4	4	4	4	2	4	3	2	4	2		2		35
15294										10	12	12	12	12	4	62
17677		1	12	12	11	12	11	12	12							83
17679		1	9	12	11	12	12	12	12	10	12	12	13	12	4	144
20342									8	7						15
TOTAL		2	29	32	30	32	28	32	37	31	32	28	25	28	8	374
Kirby Creek 0841N_01																
17675		1	12	12	11	12	11	11	17	23	15	12	12	12	4	165
Crockett Branch 0810C_01																
17683		1	11	12	11	12	12	11	12	11	11	12	12	12	4	144

~ South-Central Region ~
 Mountain Creek Lake
 Upstream Watershed

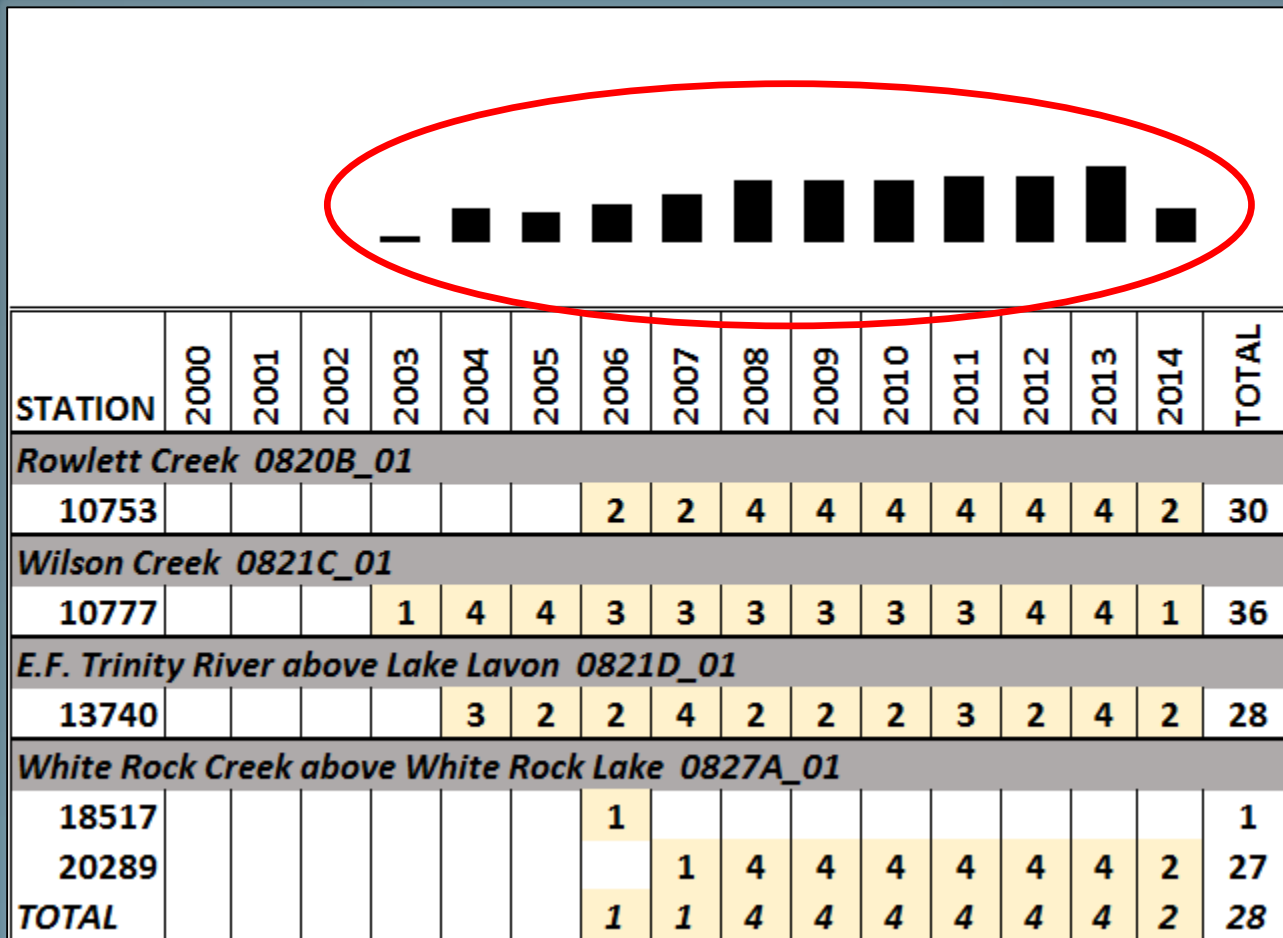
East Region 2014 Assessment



E. coli Criterion = 126 MPN / 100 mL



~ East Region ~ *E. coli* Samples by Year

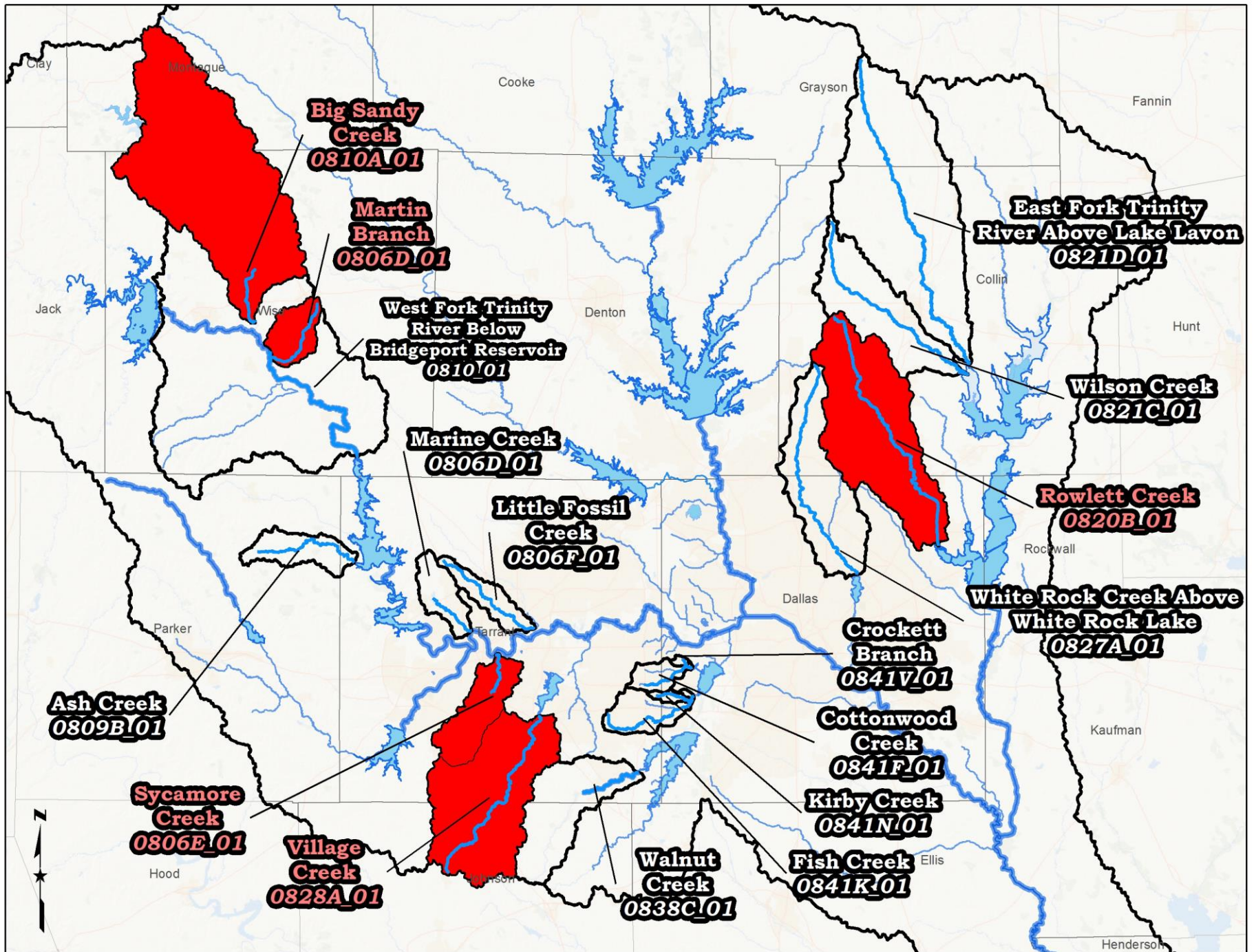


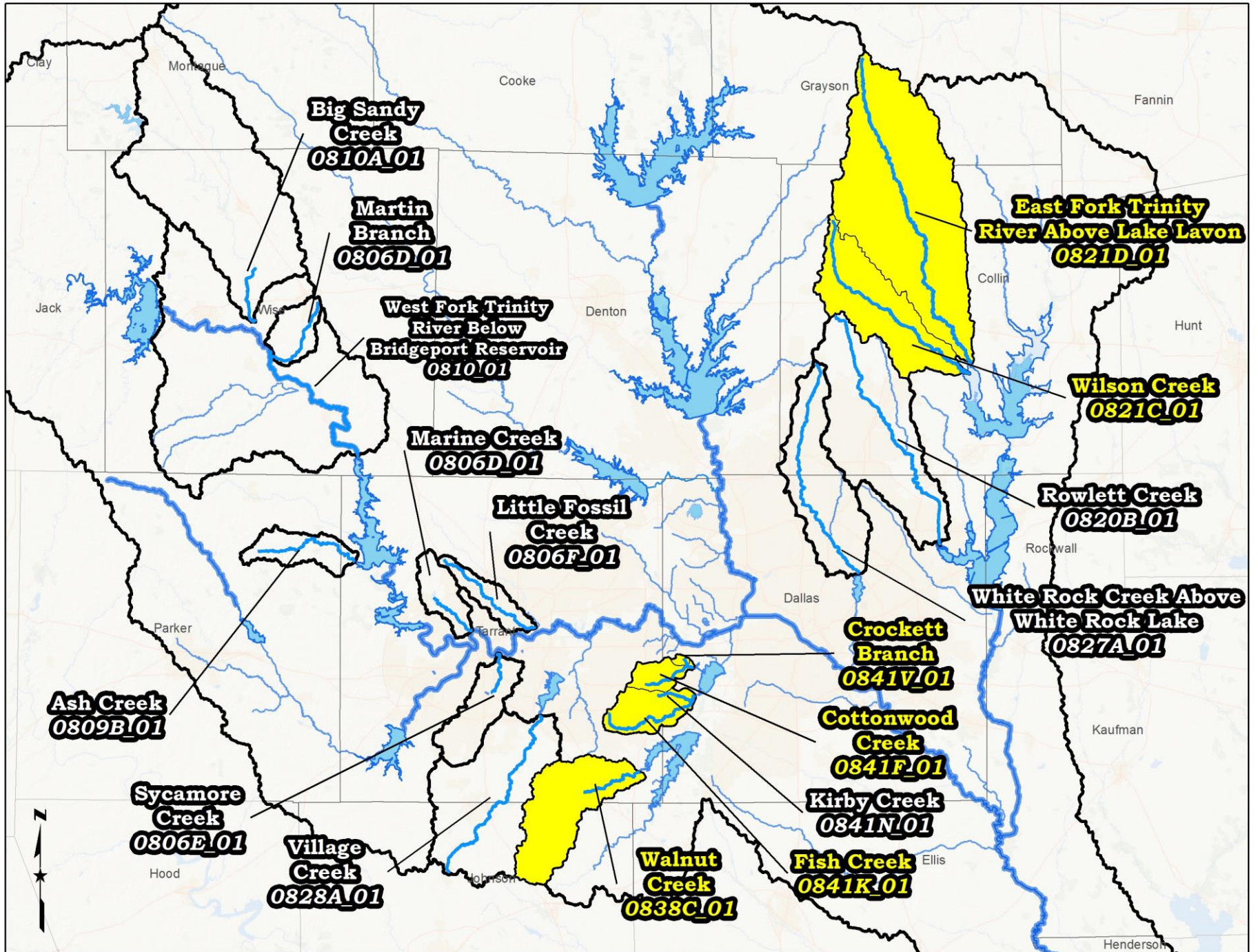
SUMMARY

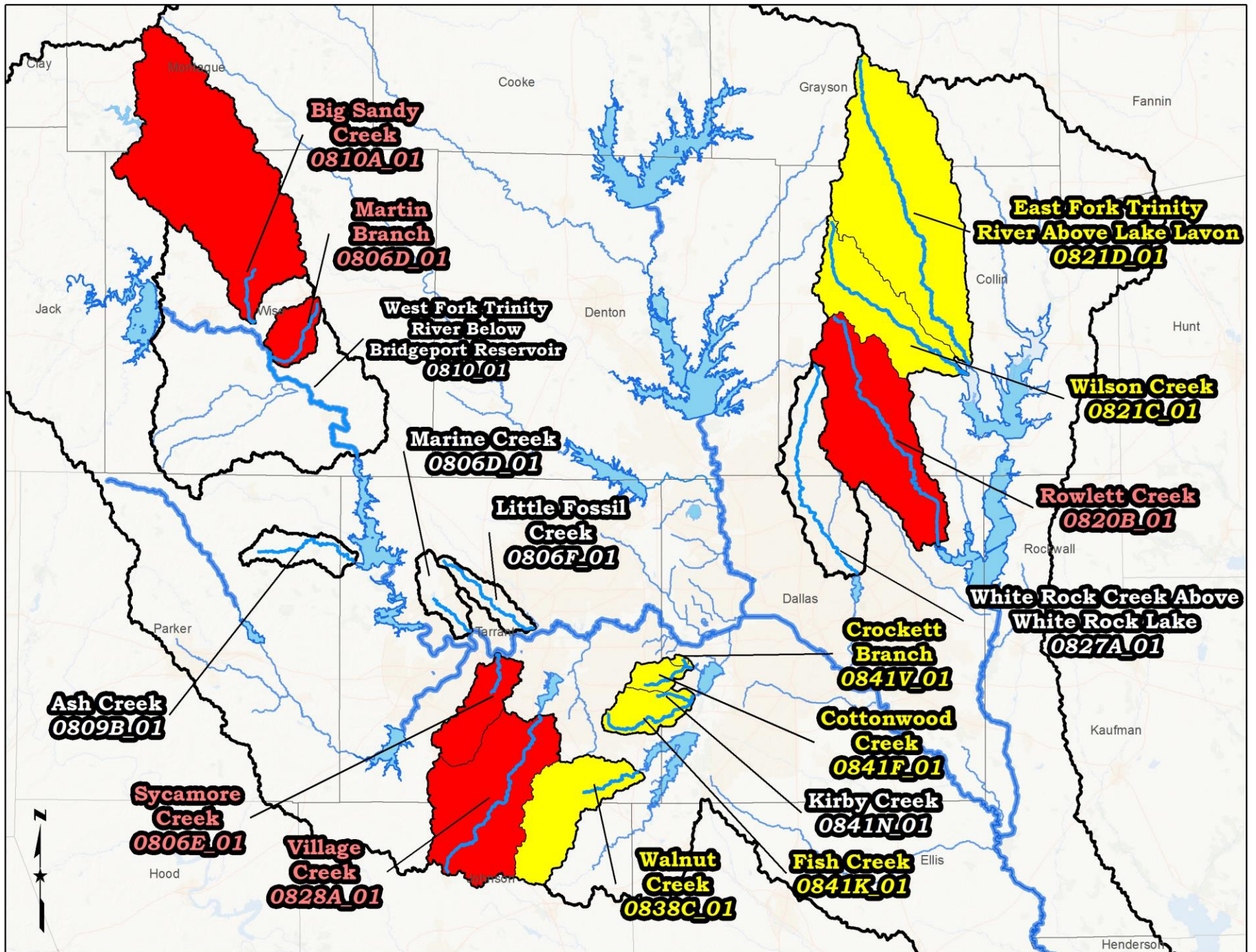
AU	Stream Name	Data	GeoMean 2014 Asmnt	Trend	SCORE
WEST REGION					
0809B_01	Ash Creek	3	1	2	6
0810_01	W.F. Trinity River Below Bridgeport Reservoir	3	2	1	6
0810A_01	Big Sandy Creek	1	2	2	5
0810C_01	Martin Branch	1	1	3	5
SOUTH CENTRAL					
0806D_01	<i>Marine Creek</i>	1	3	2	6
0806E_01	Sycamore Creek	1	2	2	5
0806F_01	<i>Little Fossil Creek</i>	1	3	2	6
0828A_01	Village Creek	2	2	1	5
0838C_01	Walnut Creek	2	3	2	7
0841F_01	Cottonwood Creek	3	2	3	8
0841K_01	Fish Creek	3	2	2	7
0841N_01	Kirby Creek	3	1	2	6
0841V_01	Crockett Branch	3	1	3	7
EAST					
0820B_01	Rowlett Creek	2	1	2	5
0821C_01	Wilson Creek	2	3	2	7
0821D_01	E.F. Trinity River above Lake Lavon	2	3	2	7
0827A_01	<i>White Rock Creek above White Rock Lake</i>	2	1	3	6

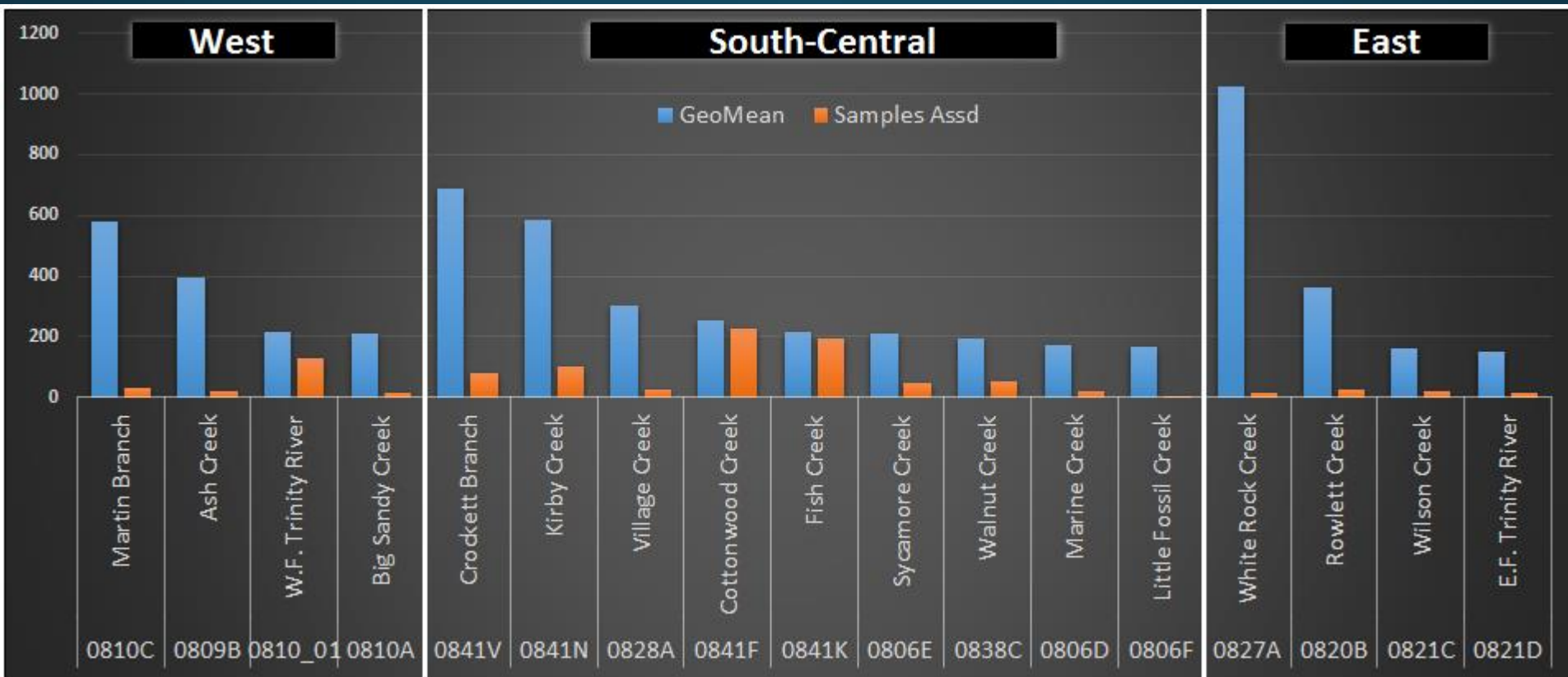


Data		GeoMean		Trend	
1	Weak	1	> 3x criterion	1	Up
2	Mod	2	> 2x criterion	2	NS
3	Strong	3	< 200 MPN/100 mL	3	Dn









E. coli Criterion = 126 MPN / 100 mL

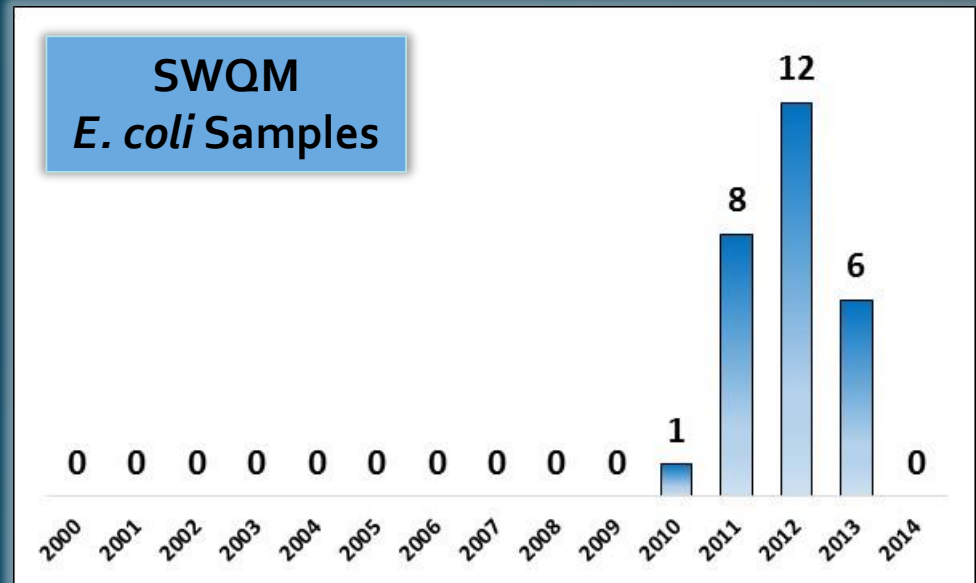
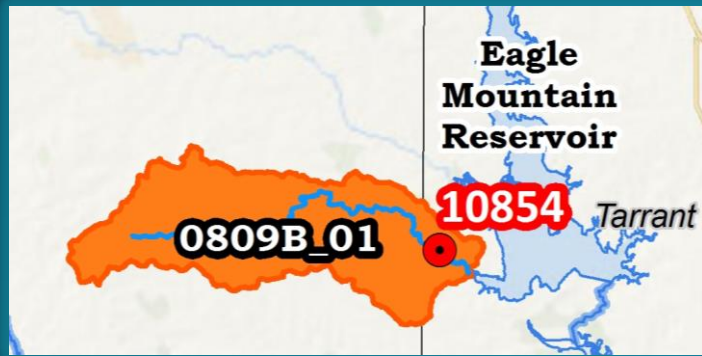
0841's:
Strong *E. coli* datasets
Trib (N,V) show high geomeans

West:
Weak *E. coli* datasets in tribs that
also exhibit high *E. coli* values

East:
Weak *E. coli* datasets
0827A: high geomeans (n = 14)

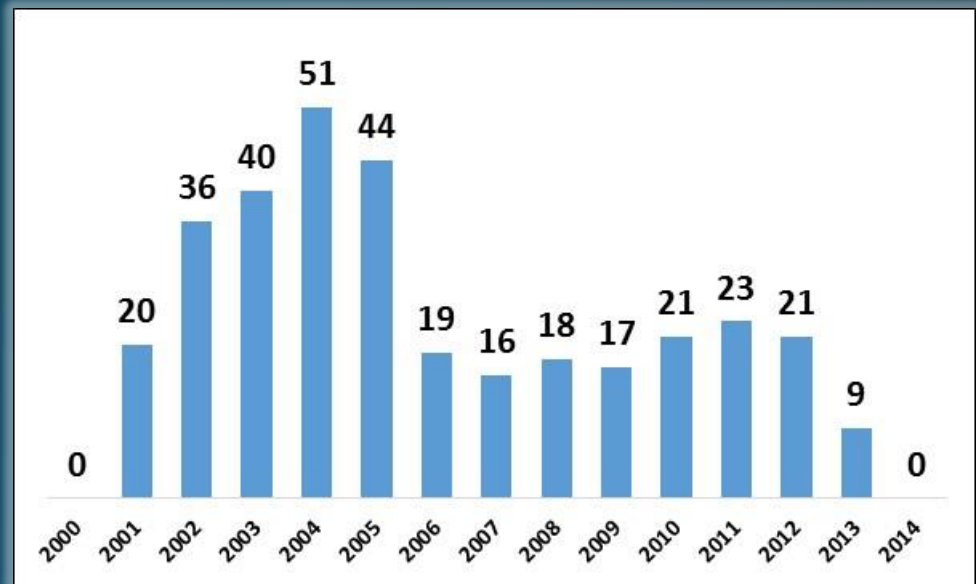
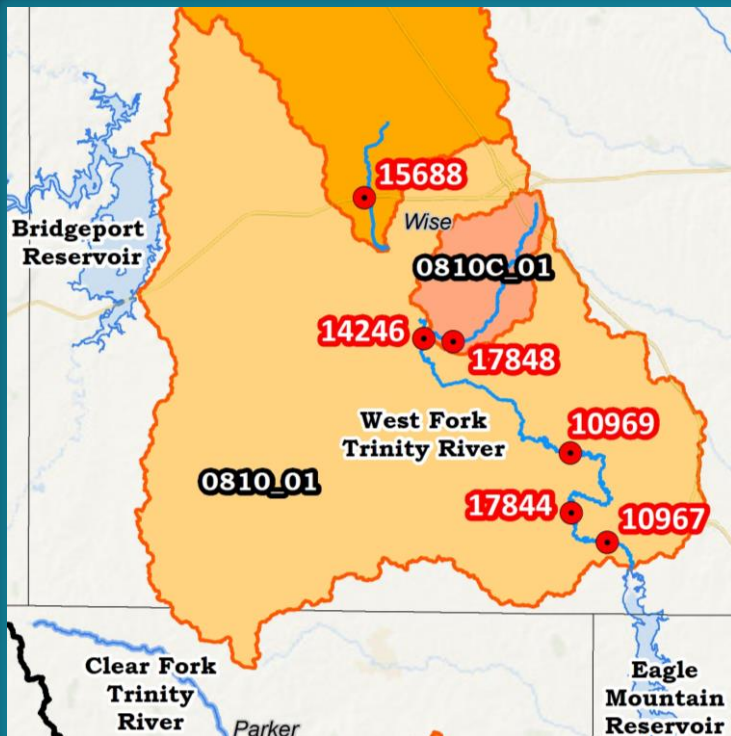
Optional approach to presentation of individual AUs

Ash Creek o809B



~ 2014 ASSESSMENT ~
Geomean = 393
Samples Assd = 20

W.F. Trinity River Below Bridgeport Reservoir 0810_01



~ 2014 ASSESSMENT ~
Geomean = 217
Samples Assd = 129