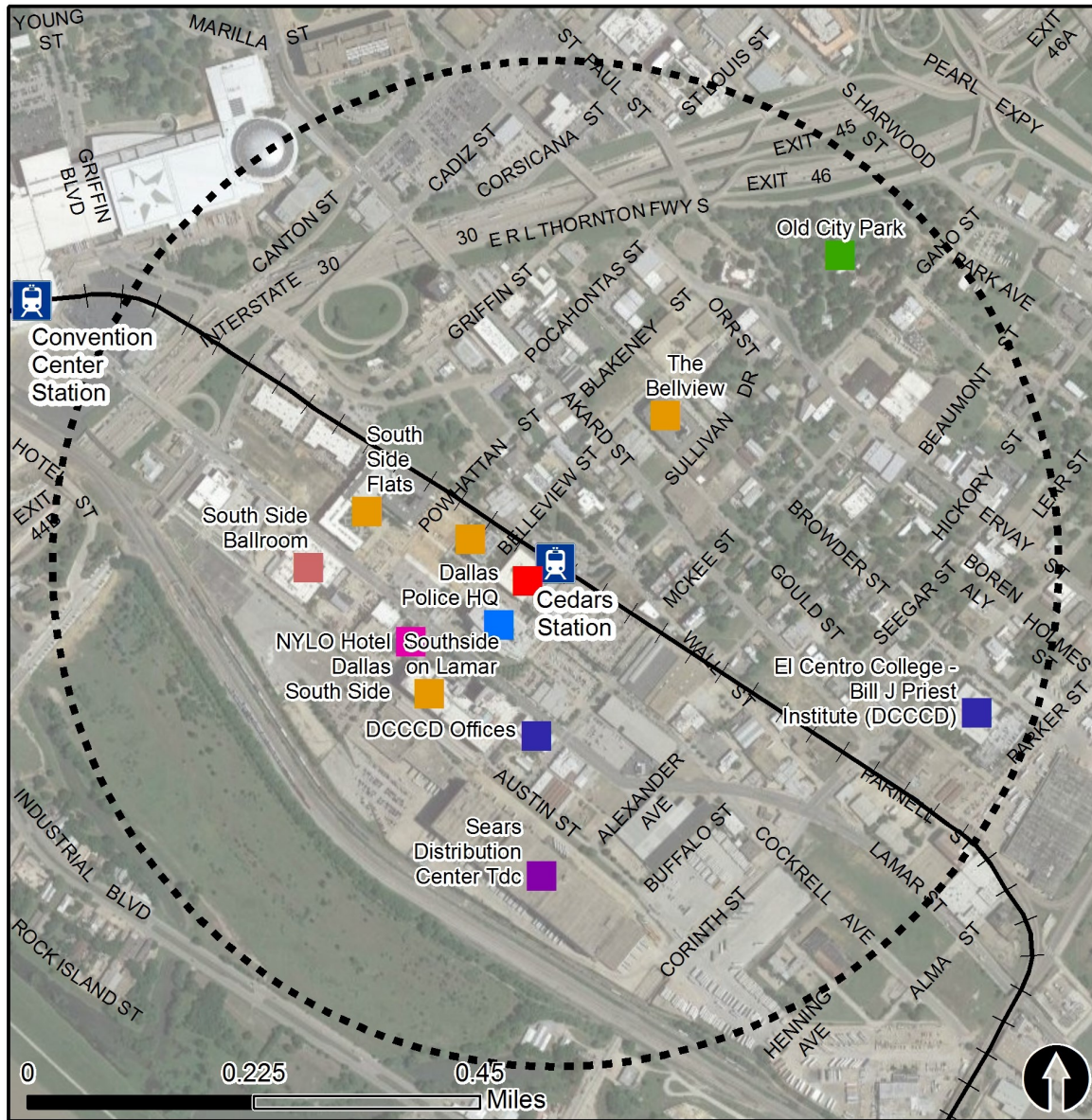


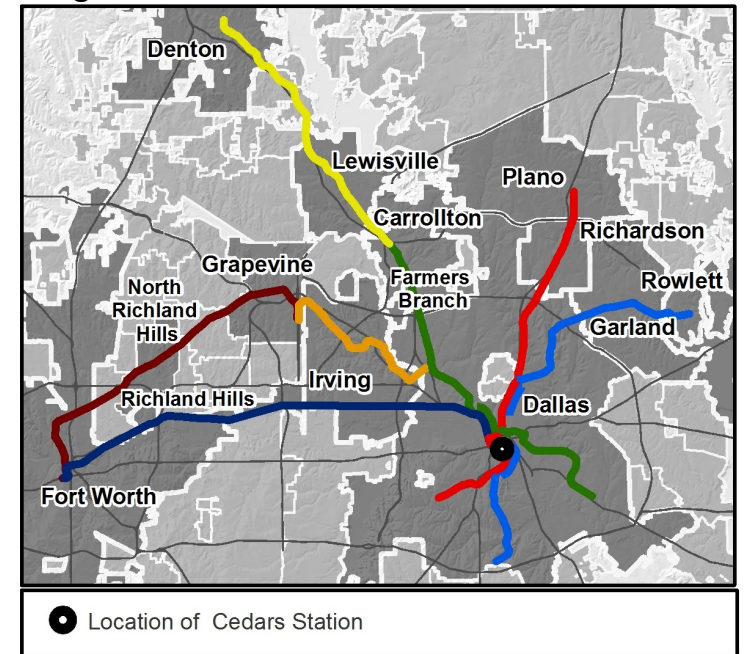
# Rail Station Fact Sheet – Cedars Station



## Station Overview

Cedars Station is located at the intersection of Bellevue and Wall Streets in Dallas' South Side/Cedars District. The station opened in 1996 and is served by the DART Rail Red and Blue Lines.

## Regional Rail Transit Lines



0.5 Mile Station Buffer Rail Lines	<b>Rail Stations</b> 	<b>Key Developments</b>			
		Education Government	Hotel Industrial	Multi-Family Office	Recreation Retail

# Rail Station Fact Sheet – Cedars Station



## Station Characteristics<sup>1</sup>

Address	1112 Belleview Street
City	Dallas
Agency	Dallas Area Rapid Transit
Rail Line(s)	Red Line, Blue Line
Corridor	Oak Cliff (OC)
Year Opened	1996
Park & Ride Spaces	0

## Ridership<sup>1</sup>

2015 Avg. Weekday	706
2015 Avg. Saturday	446
2015 Avg. Sunday	291

## 2014 On-Board Transit Survey: Access Mode to Station<sup>2</sup>

Bike	2.6%
Drive Alone	2.4%
Carpool	0.0%
Walk	53.1%
Drop Off	20.1%
Other	0.0%
Transit Transfer	21.7%

## Station Area Plans and Studies

Title	
Publisher	
Year	
Web Location	

## Station Area Characteristics (1/2 mile radius)

### Demographics<sup>3</sup>

Total Population	15,192
Population Density (pop/sq. mile)	2,358
Average Median Age	38
Average Median Income	\$67,626.00

### Housing<sup>3</sup>

Total Housing Units	4,124
Housing Density (units/sq. mile)	640
Percent Occupied	89%
Percent Owner-Occupied	9%
Percent Renter-Occupied	91%

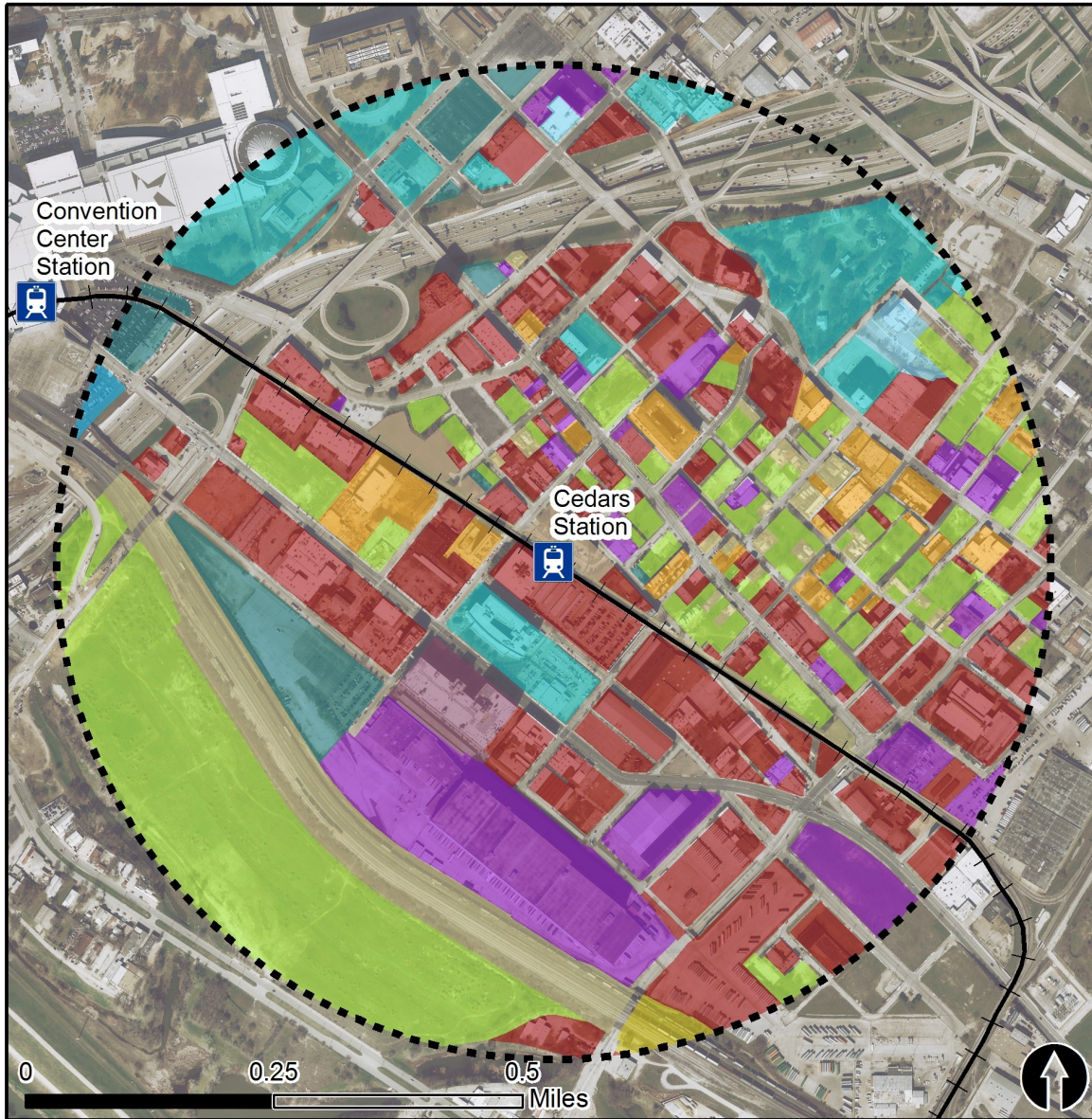
### Commute To Work<sup>3</sup>

Percent Automobile	76.9%
Percent Drive Alone	70.3%
Percent Carpool	6.7%
Percent Transit	8.1%
Percent Bike	0.2%
Percent Walk	5.7%
Percent Other	1.0%
Percent Work from Home	8.1%
Percent Zero-Vehicle Households	1.4%

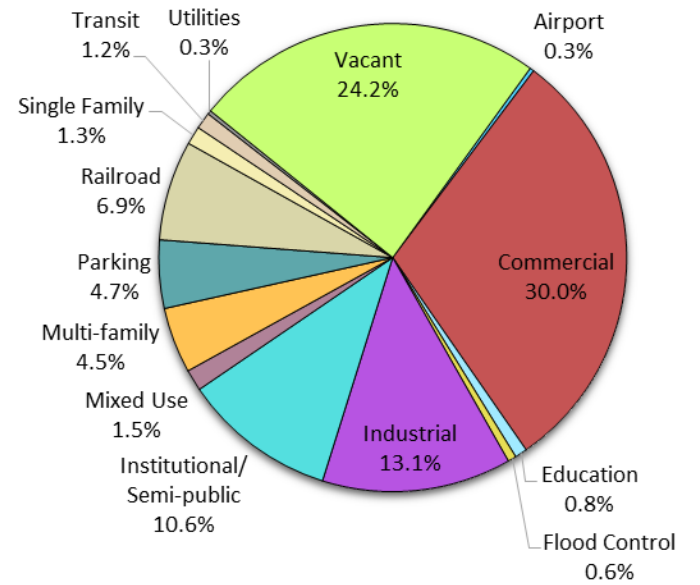
### Traffic Survey Zone 2017 Employment Forecast<sup>2</sup>

Total Jobs	10,677
Job Density (jobs/sq. mile)	6,695

# Land Use (2016) – Cedars Station



### Land Use Percentages



0.5 Mile  
Station Buffer

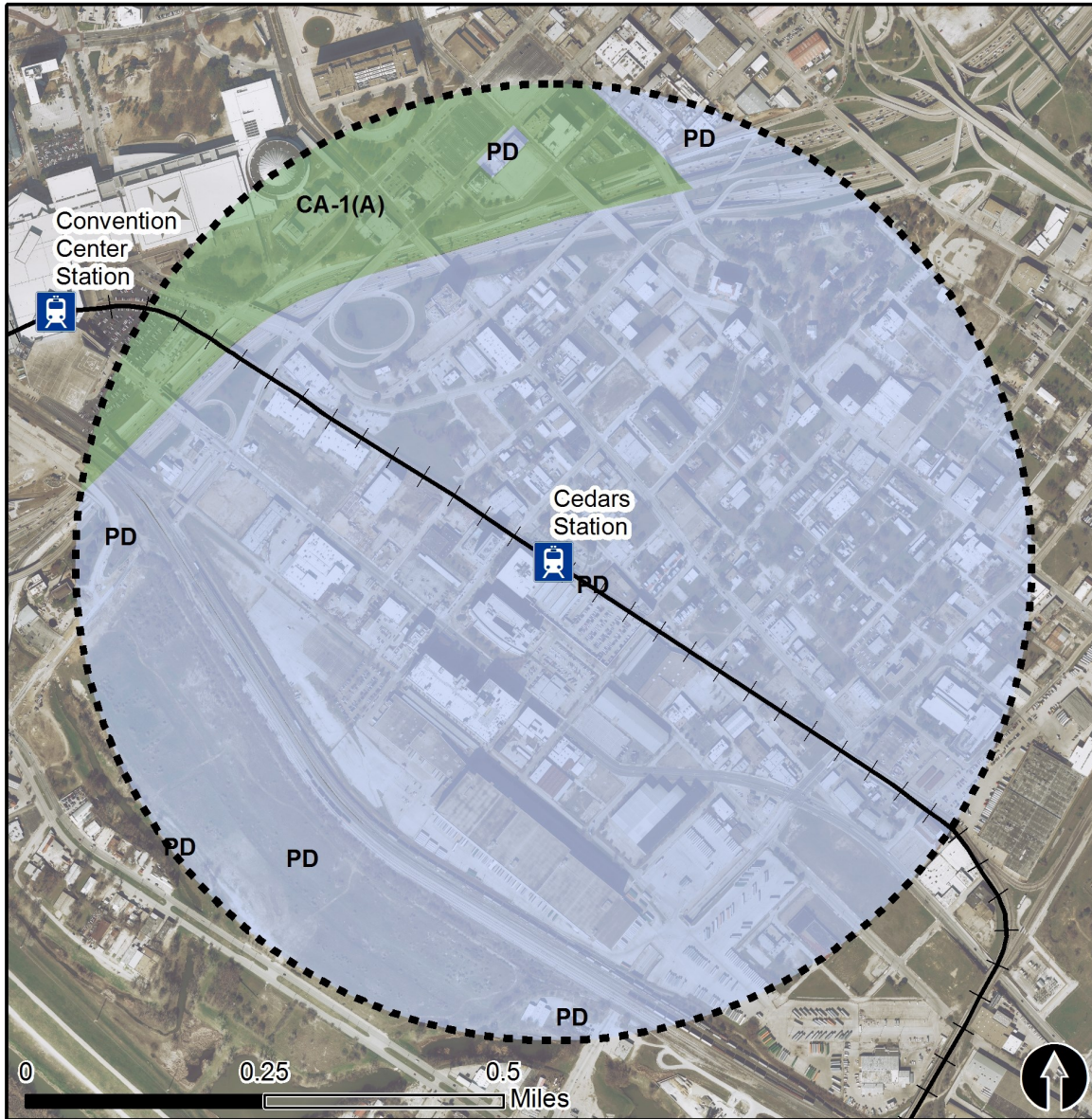


Rail Stations



Rail Lines

# Zoning (2016) – Cedars Station



## Zoning Districts


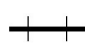
PD – Planned Development District

CA-1(A) – Central Area

For more information on zoning, please visit the City of Dallas Zoning website at:

<http://gis.dallascityhall.com/zoningweb/>

 0.5 Mile  
Station Buffer

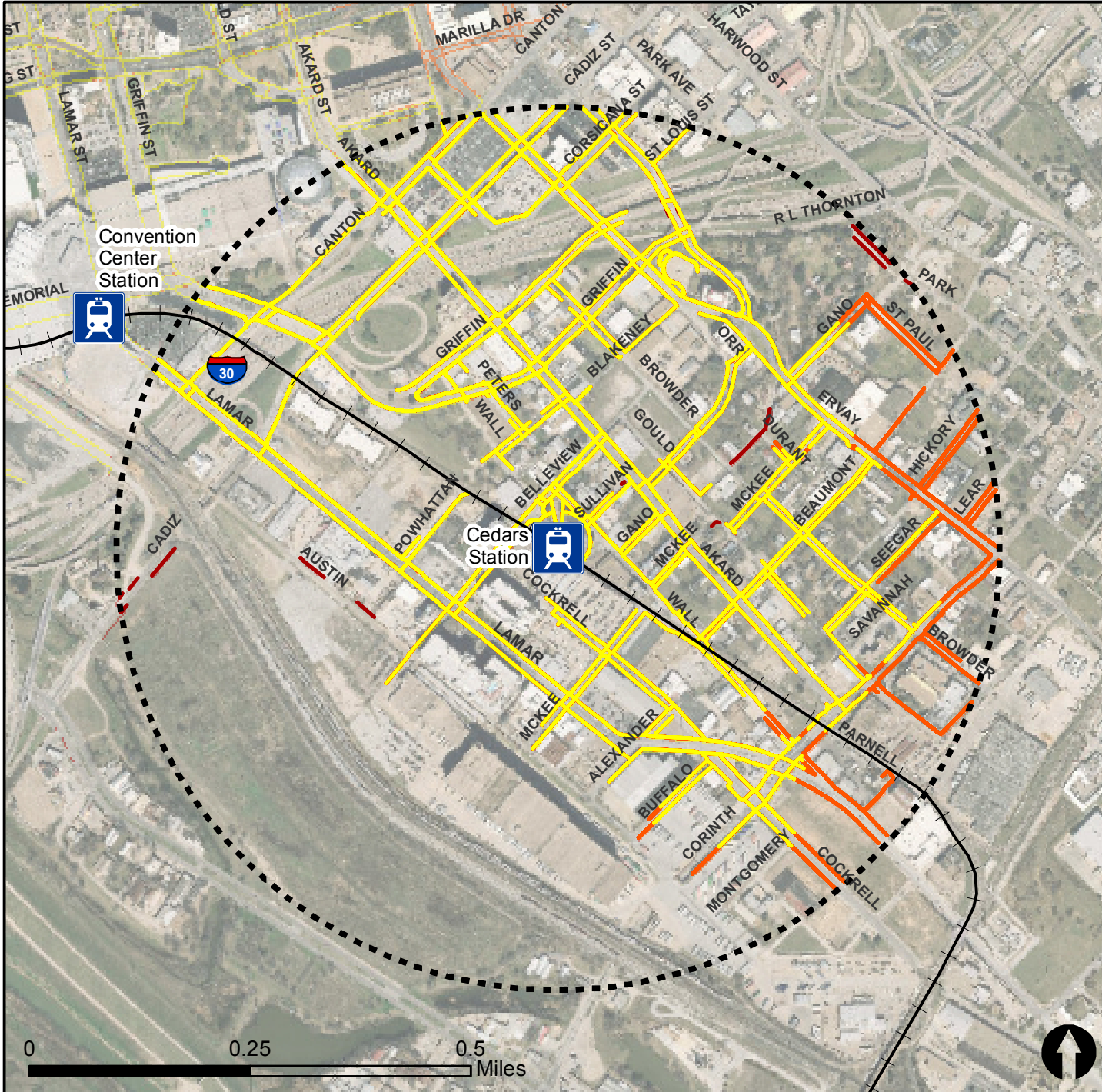
 Rail Stations  Rail Alignment

# Pedestrian Routes to Rail - Cedars Station

Last Updated: February 2015



North Central Texas  
Council of Governments



## Legend



Rail Stations



0.5 Mile  
Station Buffer

Railroads

Existing sidewalk facilities within a 0.5 mile walk distance

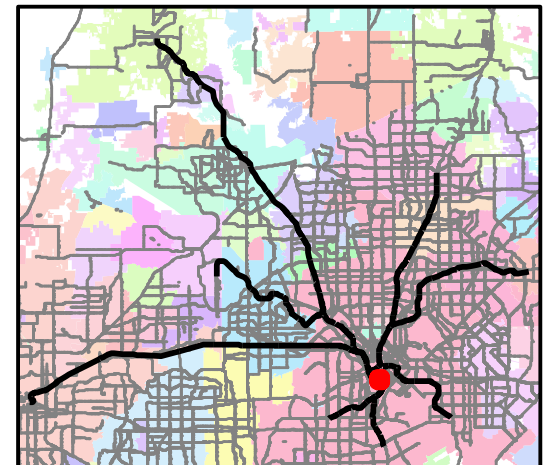
Existing sidewalk facilities greater than a 0.5 mile walk distance

Existing sidewalk facilities that are disconnected due to a gap in the network

## Project Overview

The Pedestrian Routes to Rail study identifies all existing pedestrian facilities within a half-mile radius of existing light rail and commuter rail stations in the Dallas-Fort Worth region based on 2014 data. ArcGIS Network Analyst tool was used to identify continuous facilities that are less than or greater than a half-mile actual walking distance to a station. The maps also reflect existing facilities that are disconnected due to gaps or other barriers not allowing a continuous pedestrian route to a station. The maps do not reflect the condition or ADA compliance of the existing infrastructure. More information on the Routes to Rail study and methodology is available at:

[nctcog.org/RoutesToRail](http://nctcog.org/RoutesToRail)

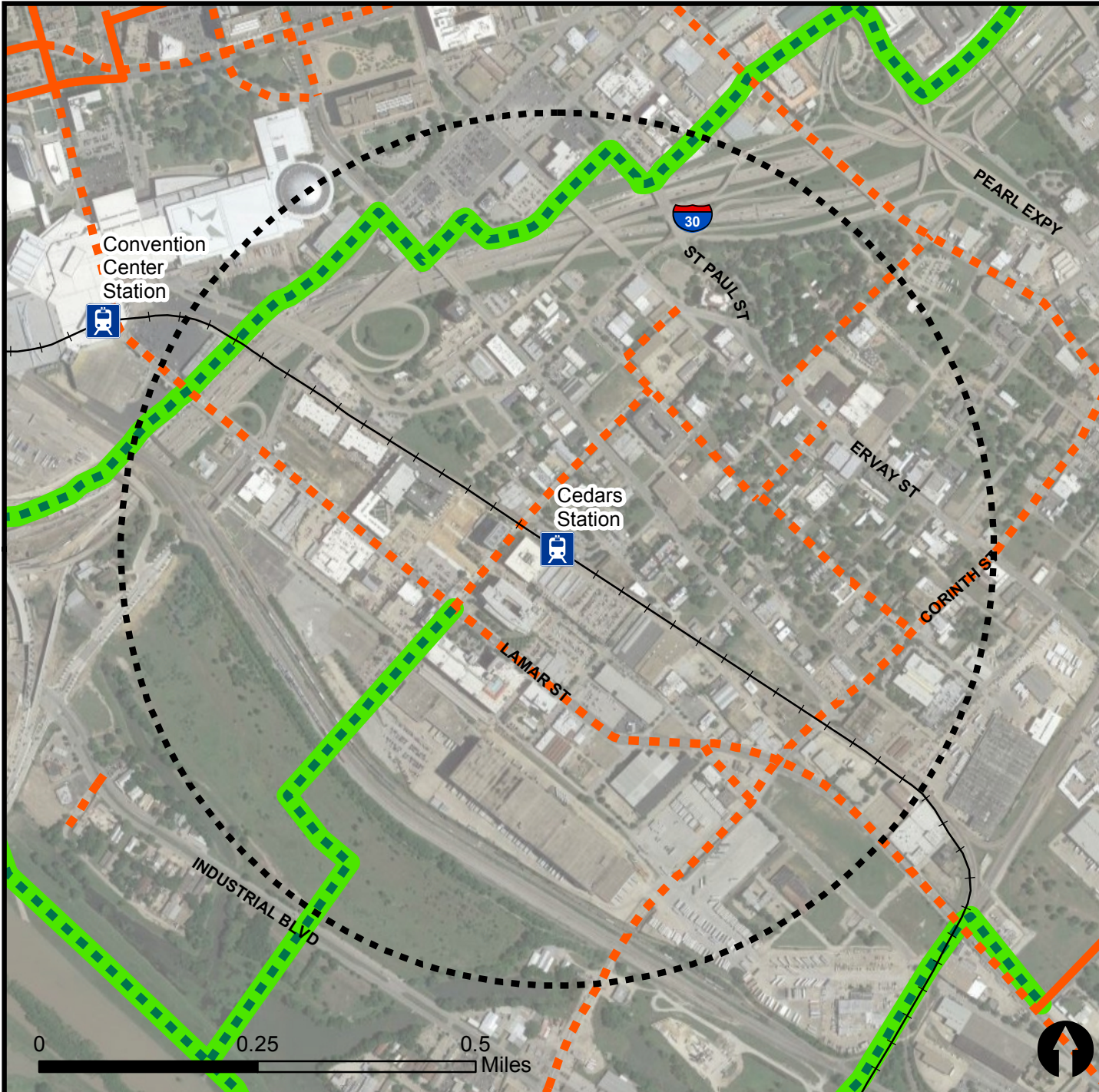


# Bicycle Routes to Rail - Cedars Station

Last Updated: October 2016



North Central Texas  
Council of Governments



## Legend

- Rail Stations
- 0.5 Mile Station Buffer
- Rail Lines
- On-Street Bikeway, Existing
- On-Street Bikeway, Planned
- 2040 Veloweb
- Off-Street Path, Existing
- Off-Street Path, Planned

## Project Overview

The Bicycle Routes to Rail study identifies all existing and planned bikeways in proximity to existing or under-construction light rail and commuter rail stations in the Dallas / Fort Worth region based on 2016 data. The maps reflect off-street paths (trails) and streets designated by local adopted master plans for dedicated bikeways (e.g. bike lanes, cycle tracks) located on the street. In accordance with the Texas Transportation Code, bicyclists have a right to the road. As such, the map does not reflect other roadways around the station that may have signed bike routes or by state law may be used by bicyclists. More information about the Routes to Rail study and methodology is available at:

[nctcog.org/RoutesToRail](http://nctcog.org/RoutesToRail)

