



USGS

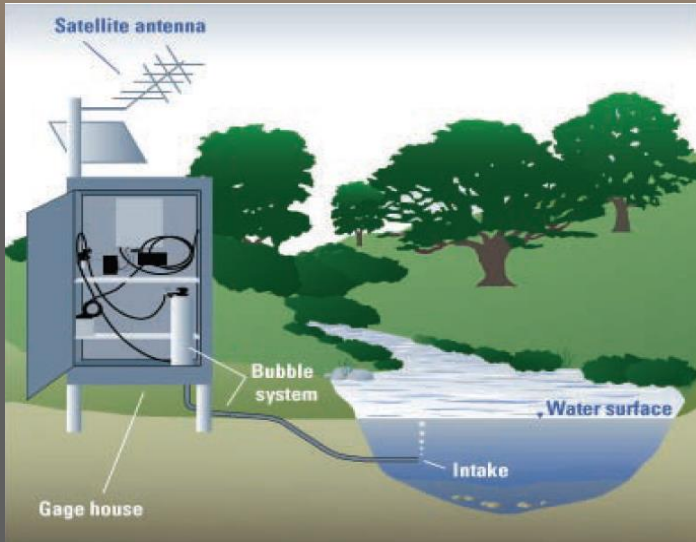
**An Overview of USGS
Streamgaging Operations
during heavy rain events**

Before the rain

- ⇒ Streamgages established
- ⇒ Rating-development
- ⇒ Levels
- ⇒ Maintenance
- ⇒ Forecast evaluated
- ⇒ Rating needs
- ⇒ Team availability
- ⇒ Communications plans reviewed

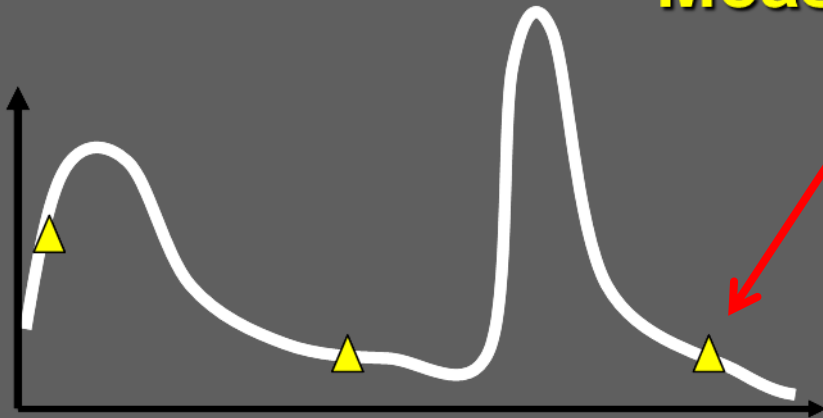


Streamgaging Process



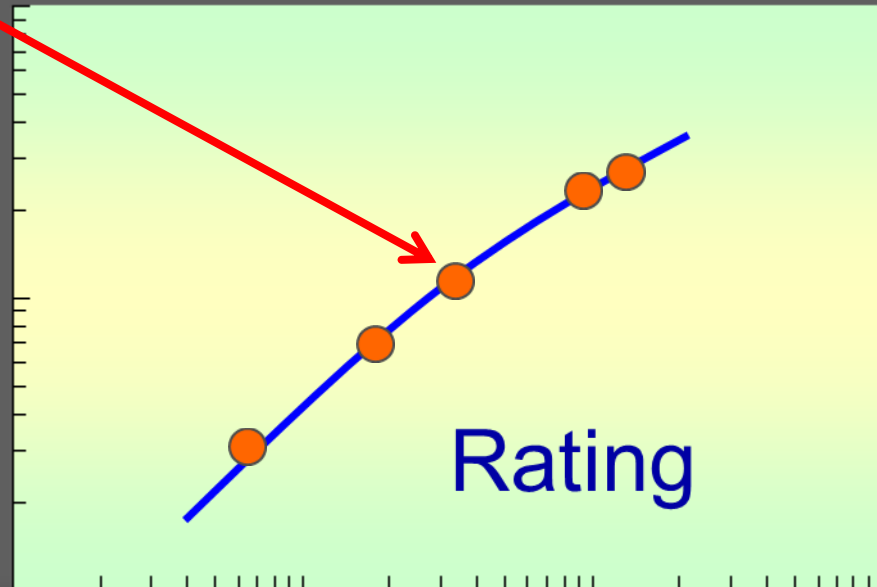
Flow

Measurements



Flow Record

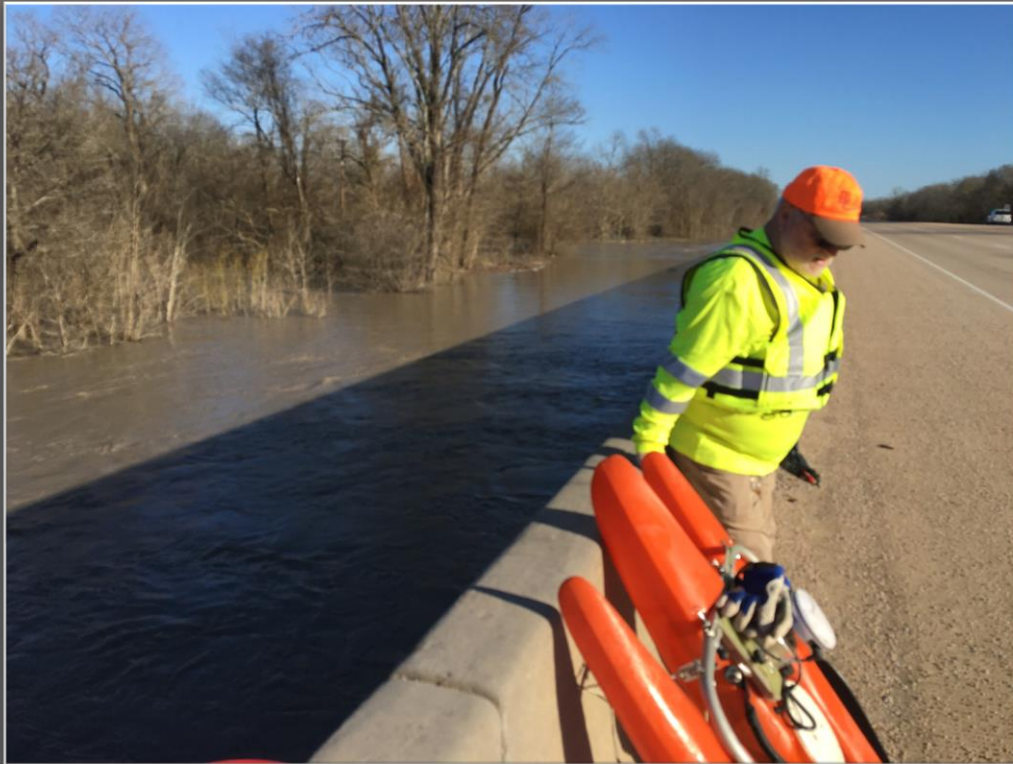
Stage



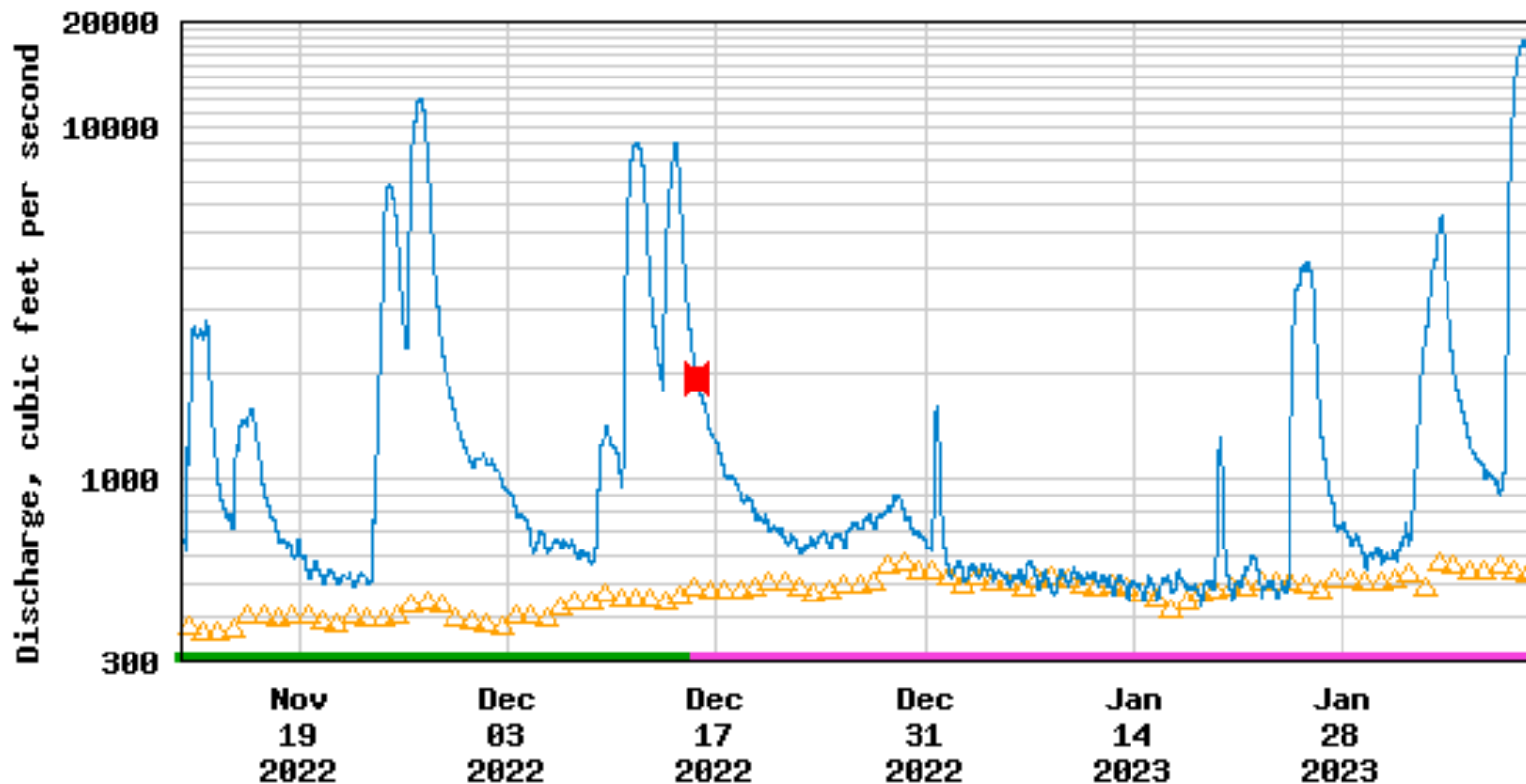
Rating

Flow

Discharge measurements



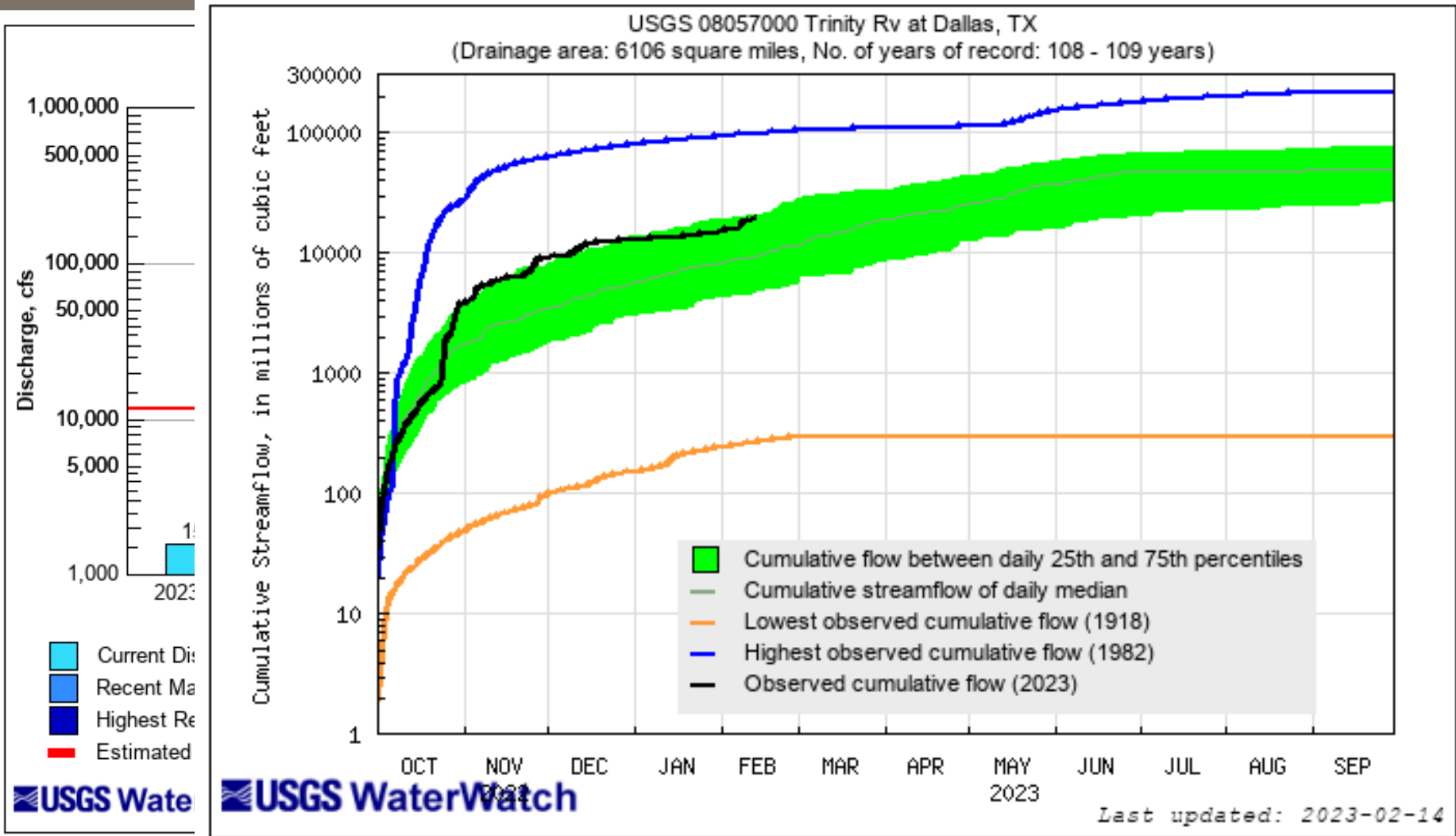
USGS 08057000 Trinity Rv at Dallas, TX



- Median daily statistic (109 years)
- Discharge
- Period of approved data
- Period of provisional data
- Measured discharge

Streamgages are visited every 8 weeks and more often during extreme events.

Where are we now?



Purpose/Importance of Gages

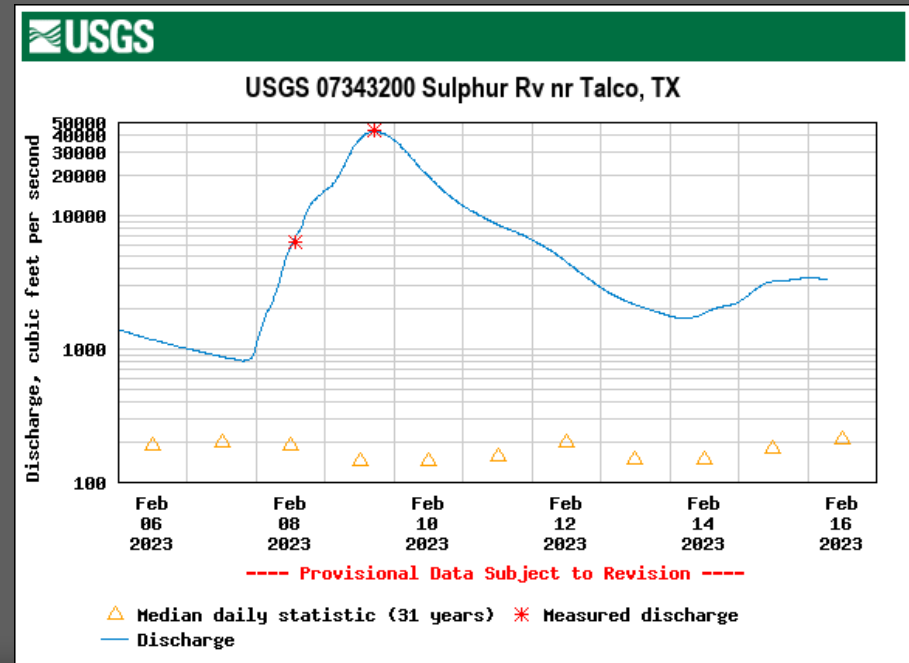
Provide near real-time data

- ⇒ Water data for resource planning
- ⇒ Water Quality
- ⇒ Diversions, returns, operations
- ⇒ Hazard warning and Forecasting
- ⇒ Recreation



Provide accurate/objective streamflow statistics

- ⇒ Annual peaks
- ⇒ Average daily flows
- ⇒ Monthly and annual flows/water volumes



Visit the U.S. Geological Survey's National Water Dashboard at

The image shows a screenshot of the USGS National Water Dashboard. At the top, the USGS logo and the text "National Water Dashboard" are visible. Below this, there are navigation tabs for "Overview", "Layers", "Legend", and "Tools". The main content is a map of the United States covered with a dense field of small, multi-colored circular markers. Overlaid on the map is the URL <https://dashboard.waterdata.usgs.gov/> in a large, white, bold font. Below the URL is a large QR code. At the bottom of the map interface, there is a scale bar (Scale: 10,000:1), a search bar, and a "Go" button. The footer of the dashboard includes links for "Privacy Policy", "Legal", "Accessibility", "Site Map", "Contact USGS", and "USGS Positional Statement", along with social media icons for Facebook, Twitter, YouTube, and Instagram.

U.S. Department of the Interior
U.S. Geological Survey

During an event, it's all about good collaboration

- ➔ Let's talk...okay, maybe email or text is better
- ➔ The more eyes on things, the better
- ➔ We value feedback from our partners



Questions?



Contact: Marsha Gipson mgipson@usgs.gov
Roger Trader rtrader@usgs.gov