

Story Map of Trails and Parks in the City of Fort Worth

Learn more about Parks and Trails in the Inner City

By: David Munoz, Adam Pitchford, Carey Wolff

December 13, 2022

The goal of this project is to take a look and the existing locations of parks and trails in the inner city (property located inside the 820 highway loop) of the city of Fort Worth, Texas and see if the residences are within a 5 or 10 minute walk. The family household income was added to see how the lower income families might be affected.

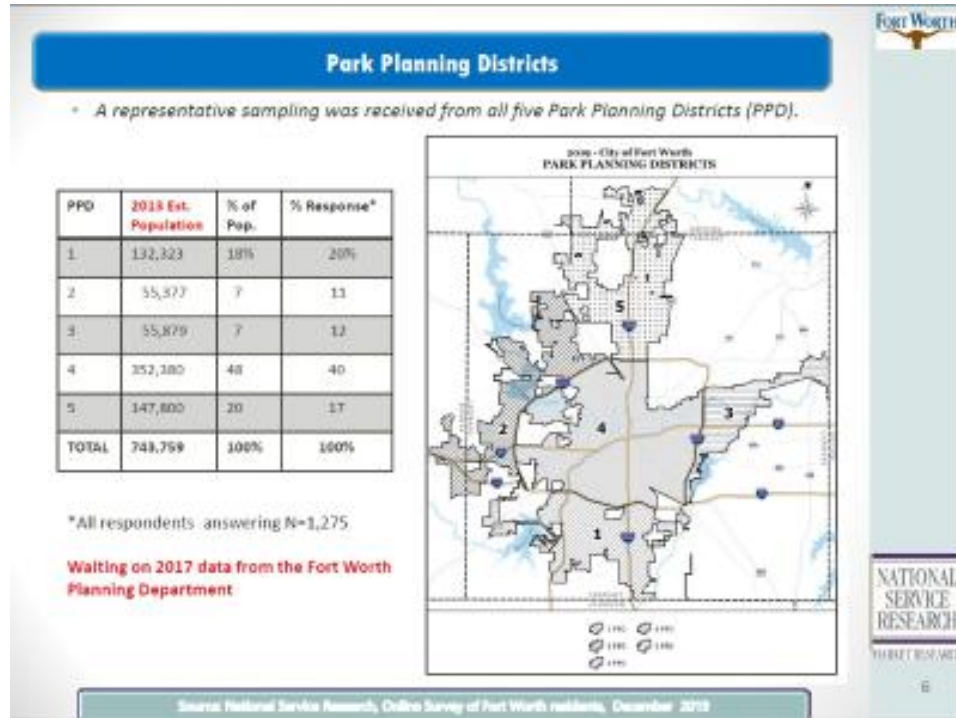
This topic was chosen for its mental health benefits. The World Health Organization released a study in 2020 that can be found in the link below. The conclusion is that more green spaces in urban locations can improve physical and mental health.

[Effect of changes in green spaces on mental health in older adults: a fixed effects analysis | Journal of Epidemiology & Community Health \(bmj.com\)](#)

The study area of the Park Planning District 4 was selected as shown below in a report provided by the City of Fort Worth.

The full report can be found in link below.

<https://www.fortworthtexas.gov/files/assets/public/parks-and-recreation/documents/2020-parks-open-spaces-master-plan.pdf>



City of Fort Worth Parks and Recreation Needs Assessment Study

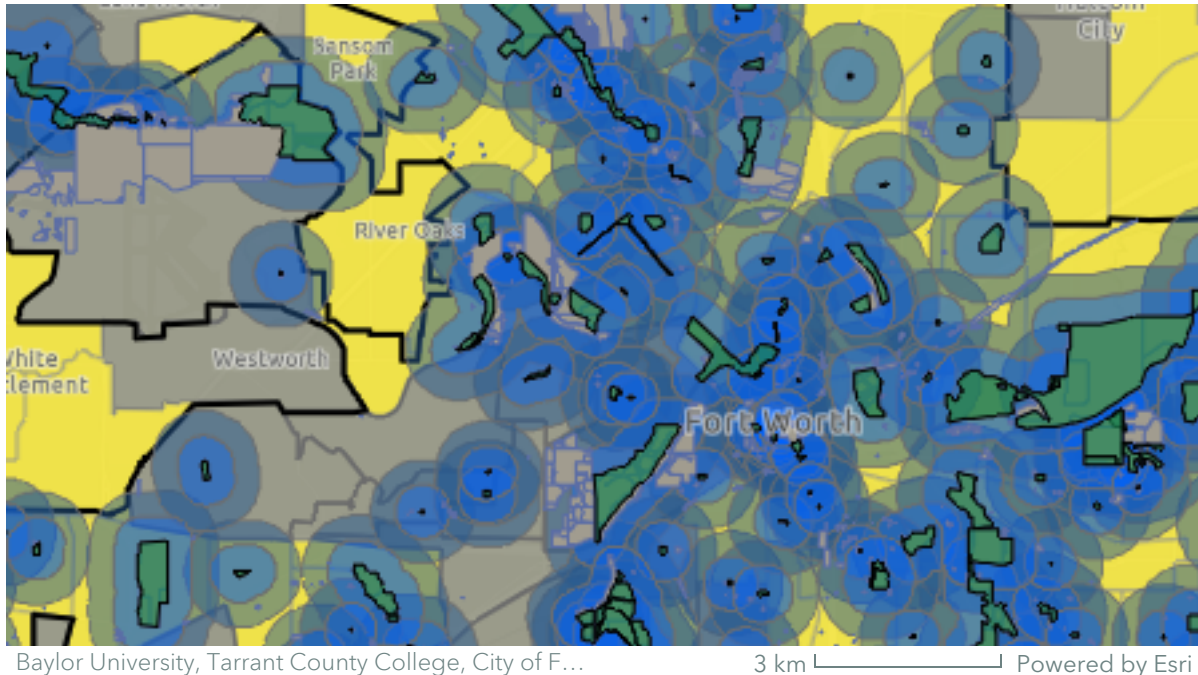
The maps below were created solely with data available online provided by the City of Fort Worth, Texas and the Census Bureau. Links can be found below.

<https://mapit.fortworthtexas.gov/>

<https://www.census.gov/en.html>

This map below used the *Census*, *Parks*, *Major Streets* and the *Lots and Tracts* download from the links provided above. We used a filter to show only the City of Fort Worth owned tract to provided existing location of possible future park locations. We used the *Major Streets* layer and the *Lots and Tracts* layer to help create a boundary for our subject area. The boundary was used to clip only show district 4 park information. Next

we created a 10 minute and 5 minute walking buffer around the existing *Parks* locations to show how accessible parks are to the public. We added the Census information to see how residence that qualify as lower income were affected.



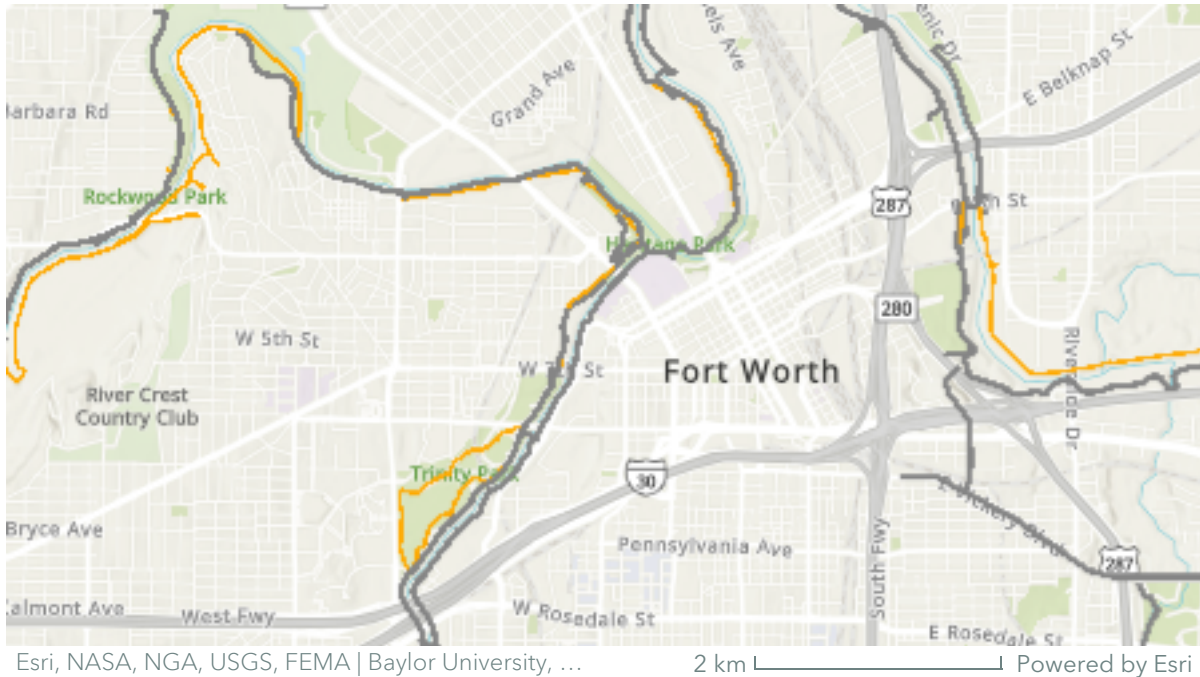
ParksWithin10minWalkRevised-Copy

10 minute walk is equal to 0.5 miles and 5 minute walk is equal to 0.25 miles +/-.

Our analysis is that 76% of the Qualified areas are within a 10 minute walk to a park location. The other 24% appear to be affected by the areas located within Meacham Airport and the surrounding industrial area.

The map below were created solely with data available online provided by the Trinity Regional Water District. Links can be found below.

<https://trwdmaps.maps.arcgis.com/apps/webappviewer/index.html?id=662f11594c4647279894c9edc73b917e>



City Fort Worth Trails

In conclusion, the maps show that the City of Fort Worth has done a good job providing parks within a 5 or 10 minute walk from most residences. The goal for the City of Fort Worth is to improve and enhance the current locations over the next several years. The City of Fort Worth has created their own Story Map that talks about their "conservation program" and a link to that can be found below.

[Fort Worth Open Space Conservation Program : Planning and GIS \(tplgis.org\)](https://storymaps.arcgis.com/stories/6d250bb20fb54898aa3ba1a6ebb540fd/edit/print)