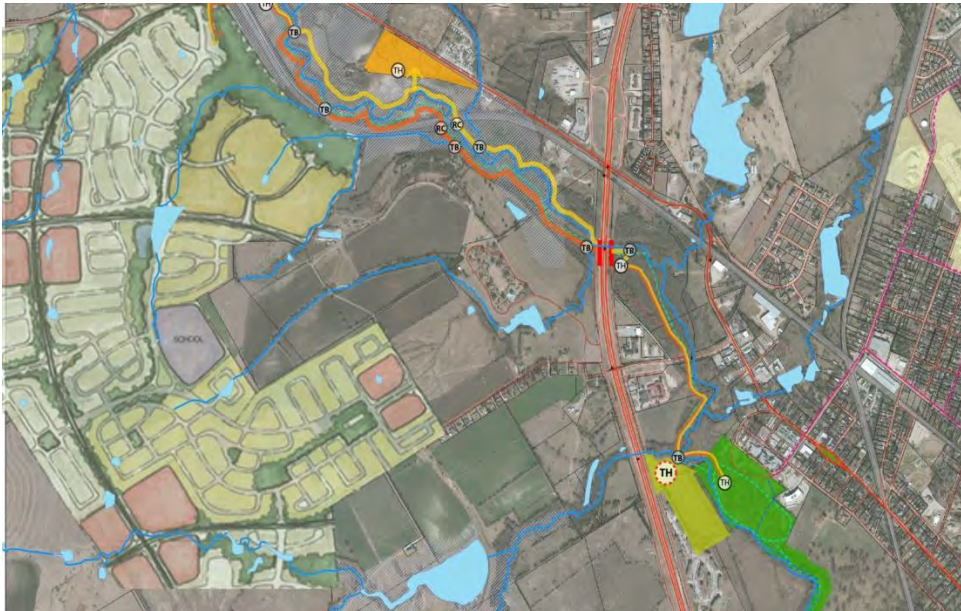


Ellis County-Midlothian to Waxahachie Trail Corridor Research



The University of Texas at Arlington

Program in Landscape Architecture, School of Architecture and

The Institute of Urban Studies, The School of Urban and Public Affairs

The University Partnership Program

North Central Texas Council of Governments
The University of Texas

Ellis County
City of Midlothian
City of Waxahachie

The University of Texas at Arlington
Program in Landscape Architecture, School of Architecture and
The Institute of Urban Studies, The School of Urban and Public Affairs

Presentation Outline

Existing Corridor Information

- Inventory: Natural Features

- Inventory: Manmade Features

- Recent and Future Development

Photo Inventory: Existing Corridor Areas and Character

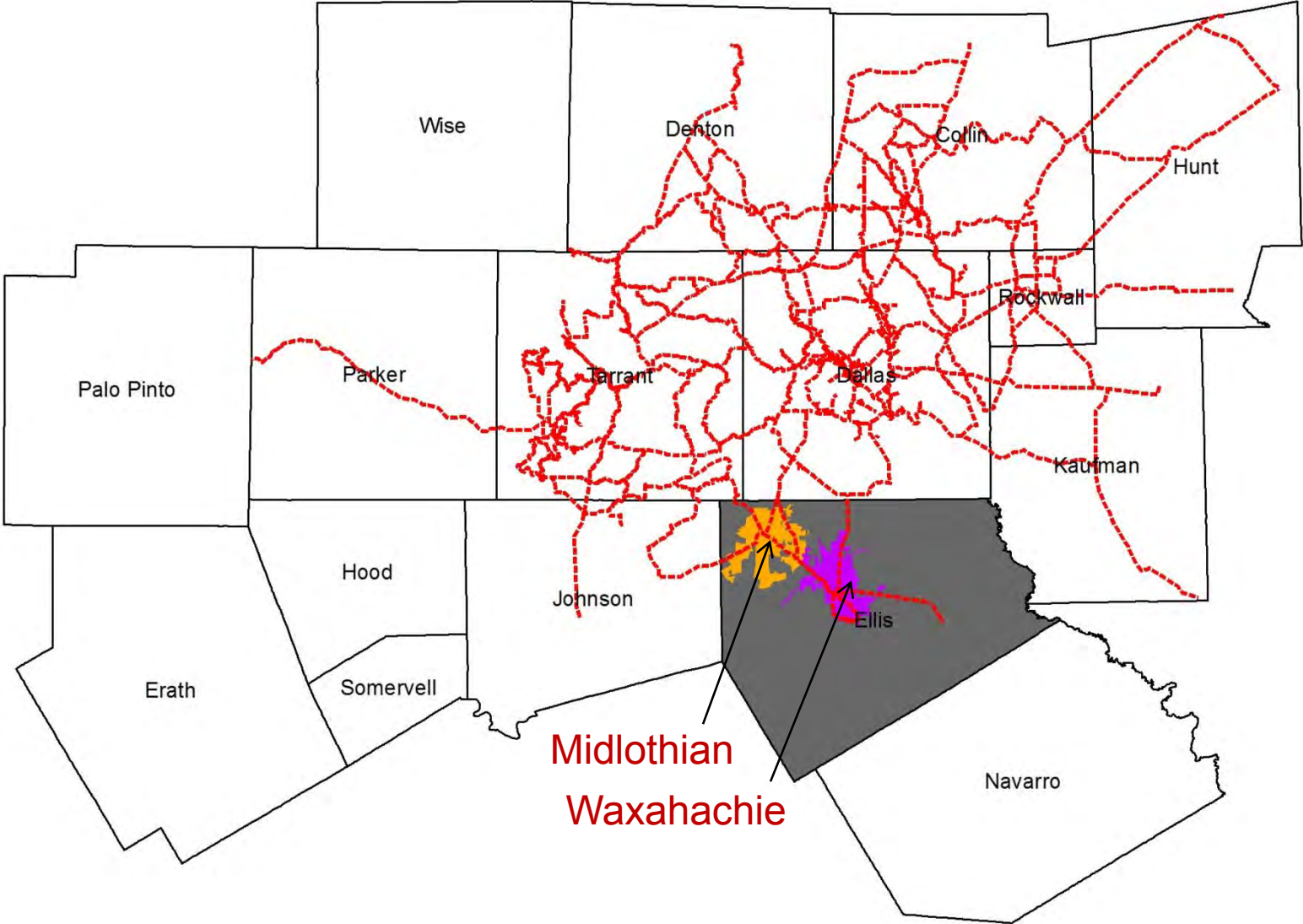
Summary Analysis and Concept

Proposed Trail Corridor Elements and Alternatives

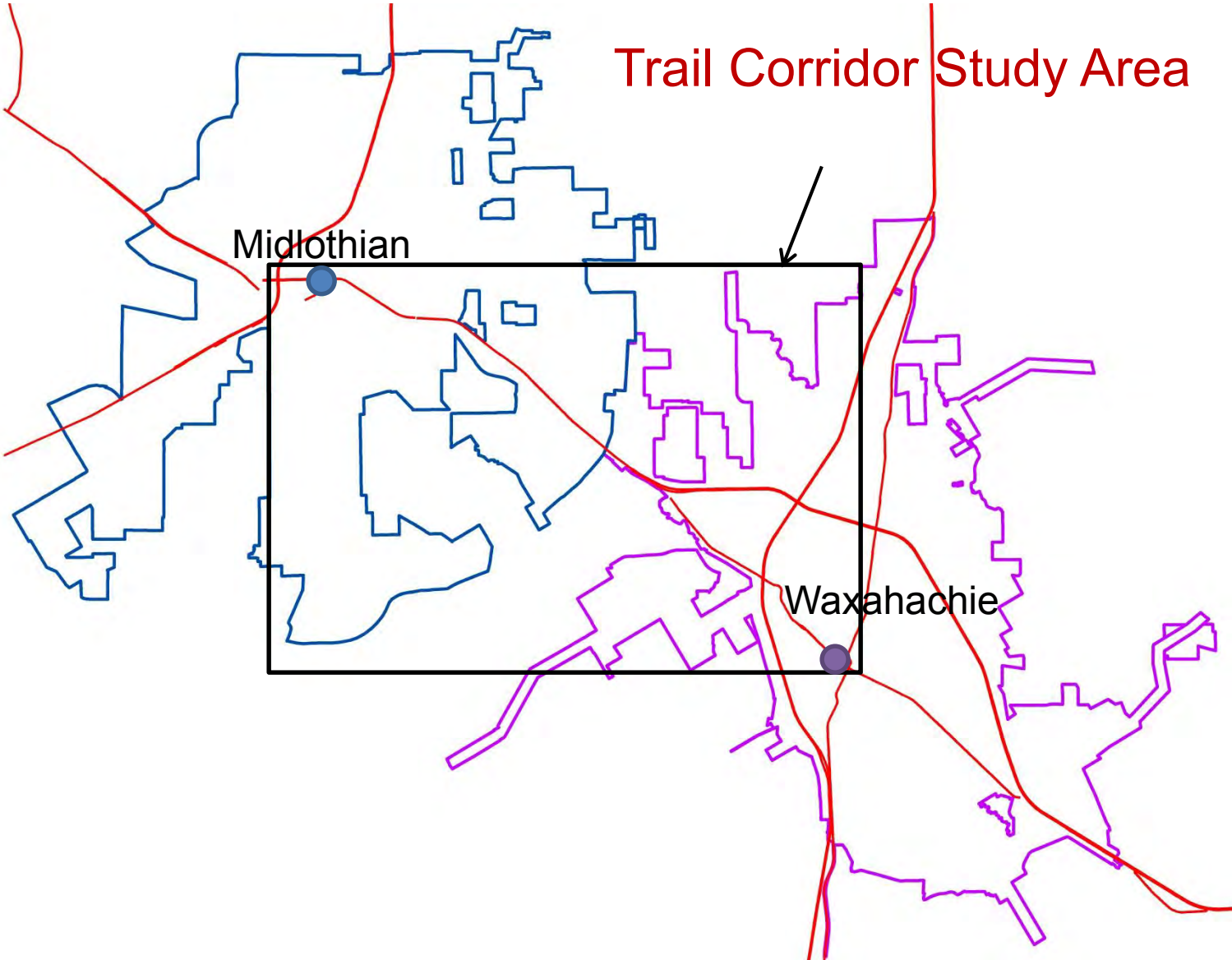
Key Issues and Questions

Next Steps

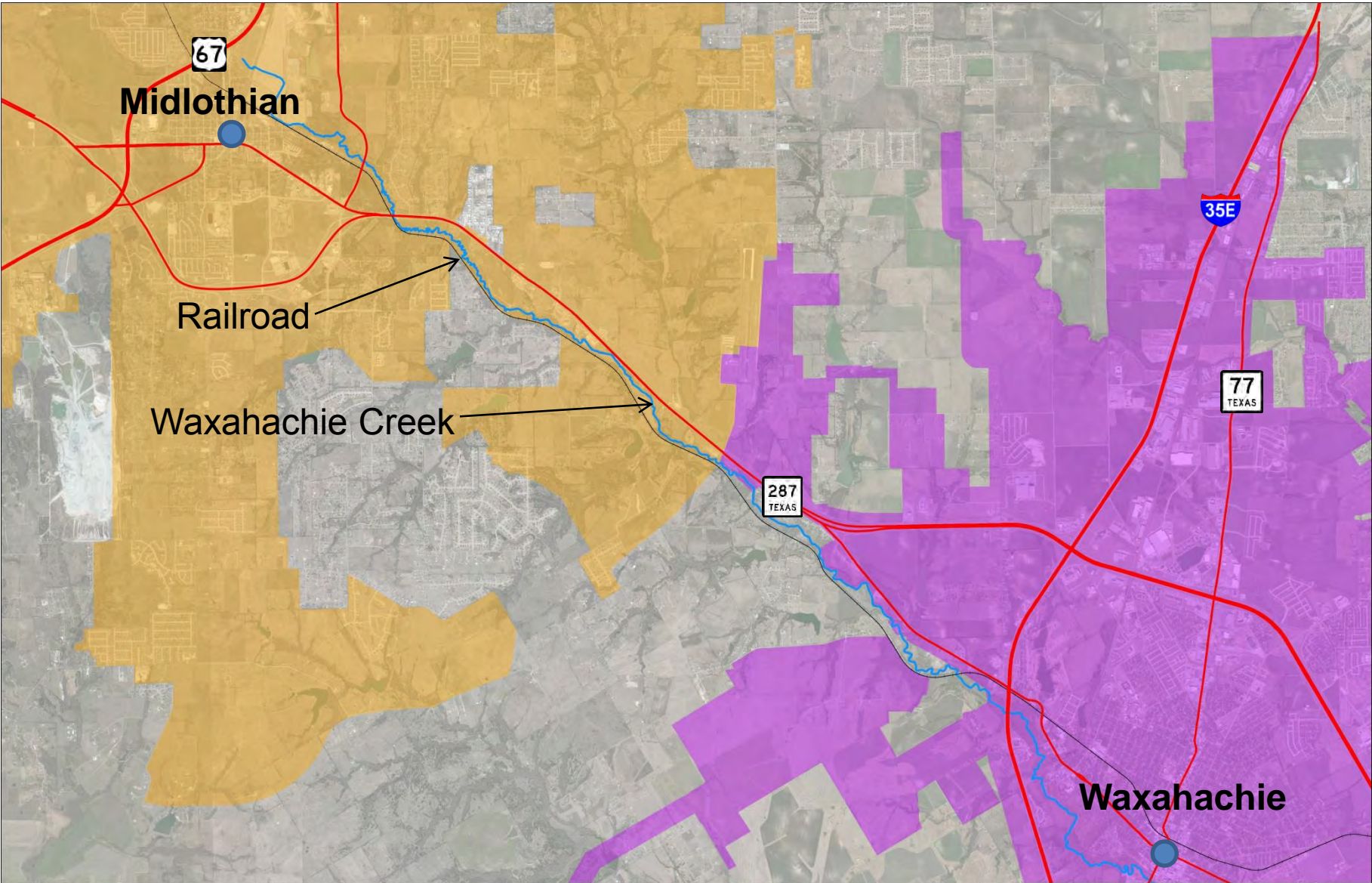
The Regional Veloweb, 2010



Study Area



The Trail Corridor



Midlothian-Waxahachie Corridor Inventory

Natural Features

- Creeks and Streams
- Lakes
- Vegetation & Land Cover
- 100 Year Flood Plain

Human Features

- Roads and Highways
- Schools
- Cemeteries
- Parks
- Railroad

Land Use

- Land Use
- Parcels

Natural Features Inventory



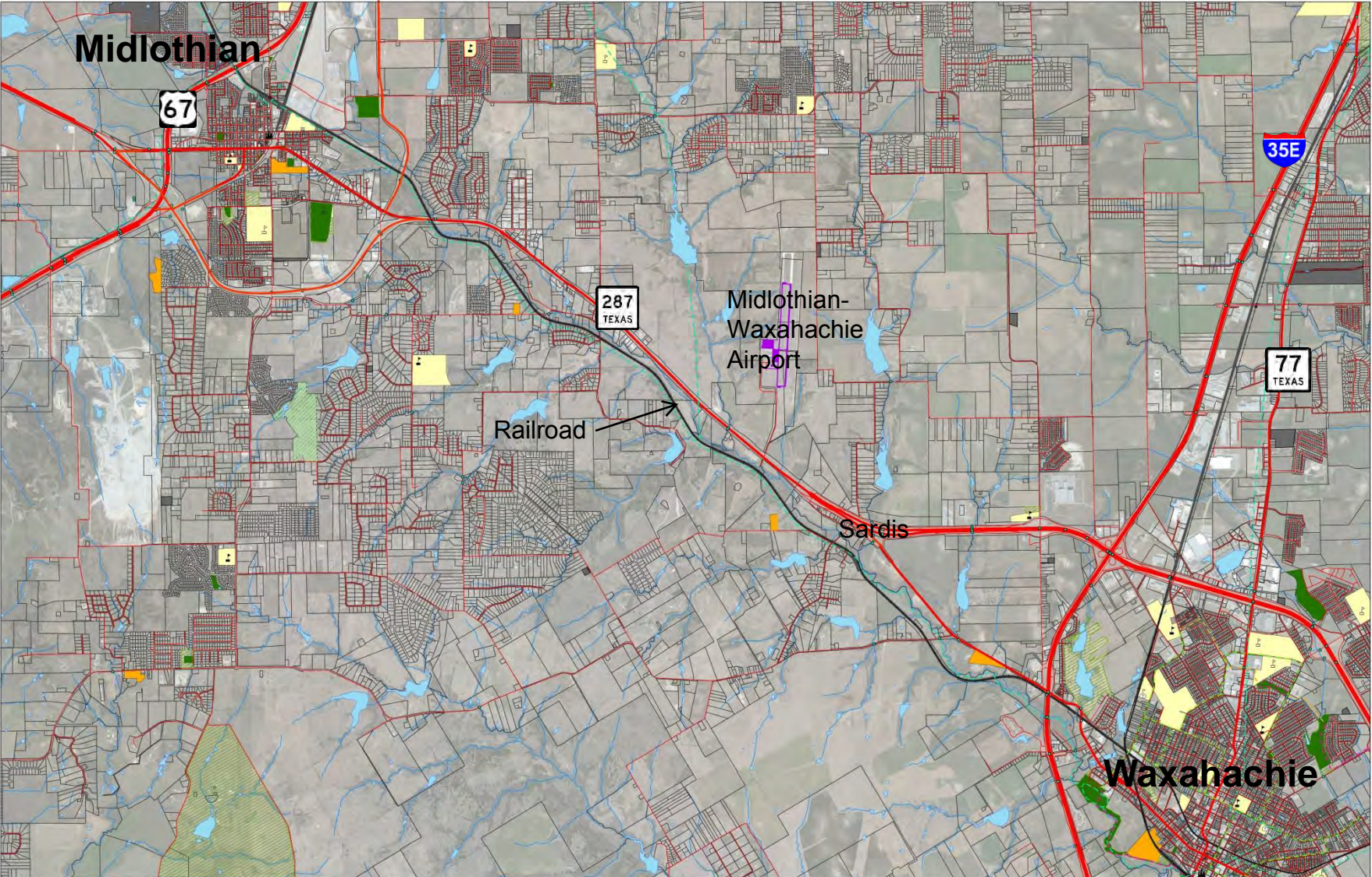
- Legend**
- Highways
 - Residential Roads
 - 2013 Flood Plain
 - Lakes
 - Streams and Creeks
 - Land Cover**
 - Deciduous Forest
 - Evergreen Forest
 - Mixed Forest
 - Shrub/Scrub
 - Herbaceous



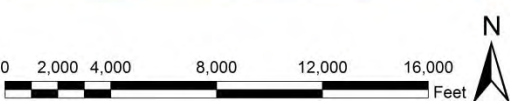
- Streams and Creeks
- Deciduous Forest
- 2013 Flood Plain
- Lakes
- Evergreen Forest

Data Source: NCTCOG GIS Data, 2010

Human Features Inventory

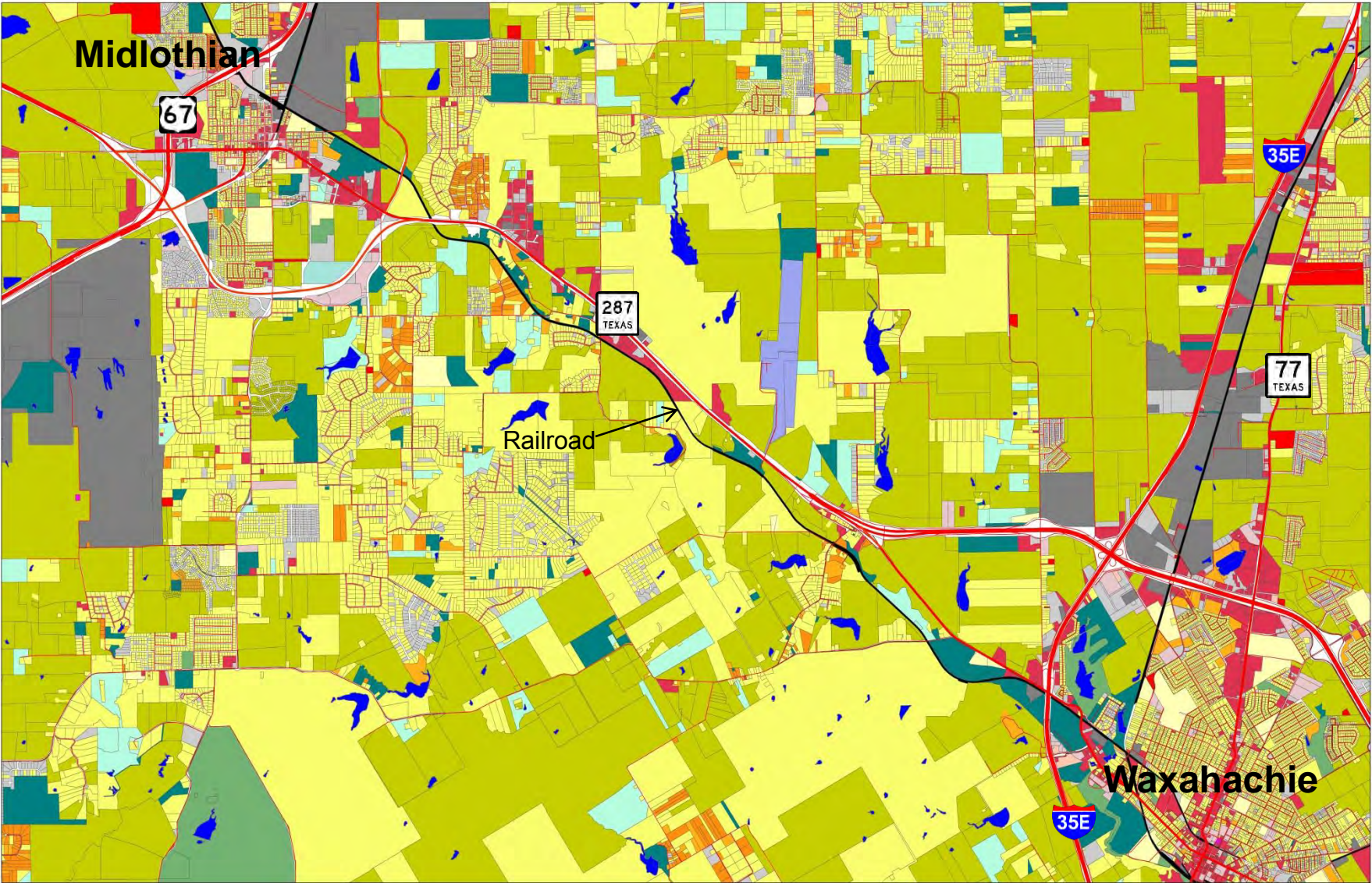


- Legend**
- City Hall
 - Educational Facilities Type**
 - Primary Education
 - Private Education
 - Secondary Education
 - Waterbodies
 - Bridges
 - Rail Stations
 - Trails trail_type**
 - Existing Trail
 - Future Trail
 - On Road Bike Lane
 - Cemeteries
 - Future Community Park
 - Regional Wetovee 2013
 - Future Transit Rail
 - Transit Rail
 - Highways
 - Roads
 - Land Use - Rail Roads
 - Land Use - Utility
 - Parks
 - Land Use - Parks
 - Land Use - Education
 - Airports
 - Parcels
 - Creeks and Streams



- Parks
- Highways
- Roads
- Primary Education
- Private Education
- Secondary Education
- Rail/Future Transit

Land Use/Parcels



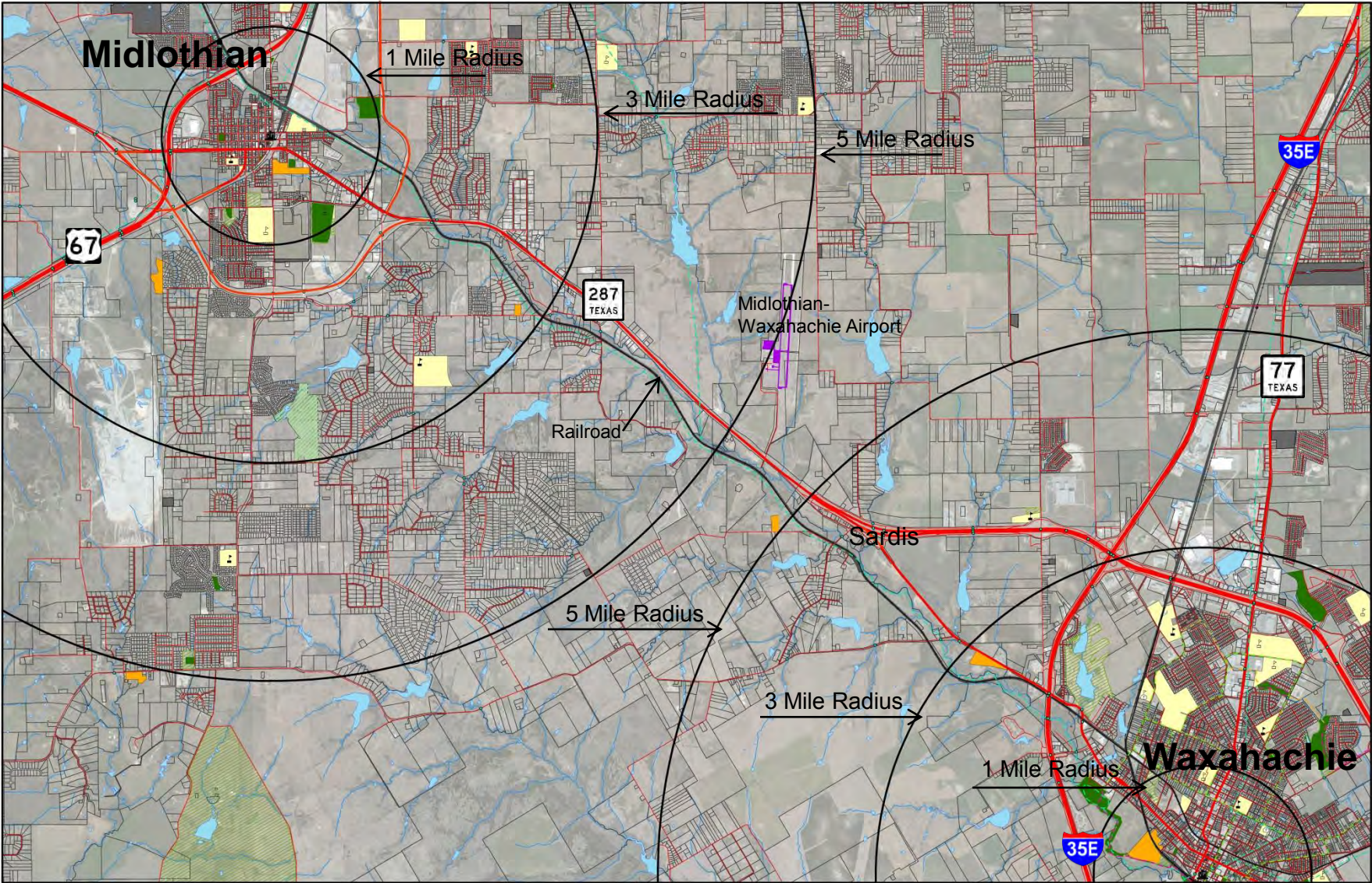
- Legend**
- Highways
 - Roads
 - Parcels
- Land Use CATEGORY**
- Cemeteries
 - Commercial
 - Education
 - Farmland
 - Group quarters
 - Hotel/motel
 - Improved acreage
 - Industrial
 - Institutional/semi-public
 - Landfill
 - Large stadium
 - Mobile home
 - Multi-family
 - Parking
 - Parks/recreation
 - Railroad
 - Ranch land
 - Residential acreage
 - Retail
 - Roadway
 - Runway
 - Single family
 - Small water bodies
 - Timberland
 - Under construction
 - Utilities
 - Vacant
 - Water



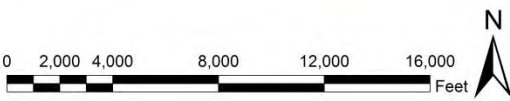
- Ranchland/Farmland
- Residential Acreage
- Commercial
- Timberland

Data Source: NCTCOG GIS Data, 2010

Distance Relationships

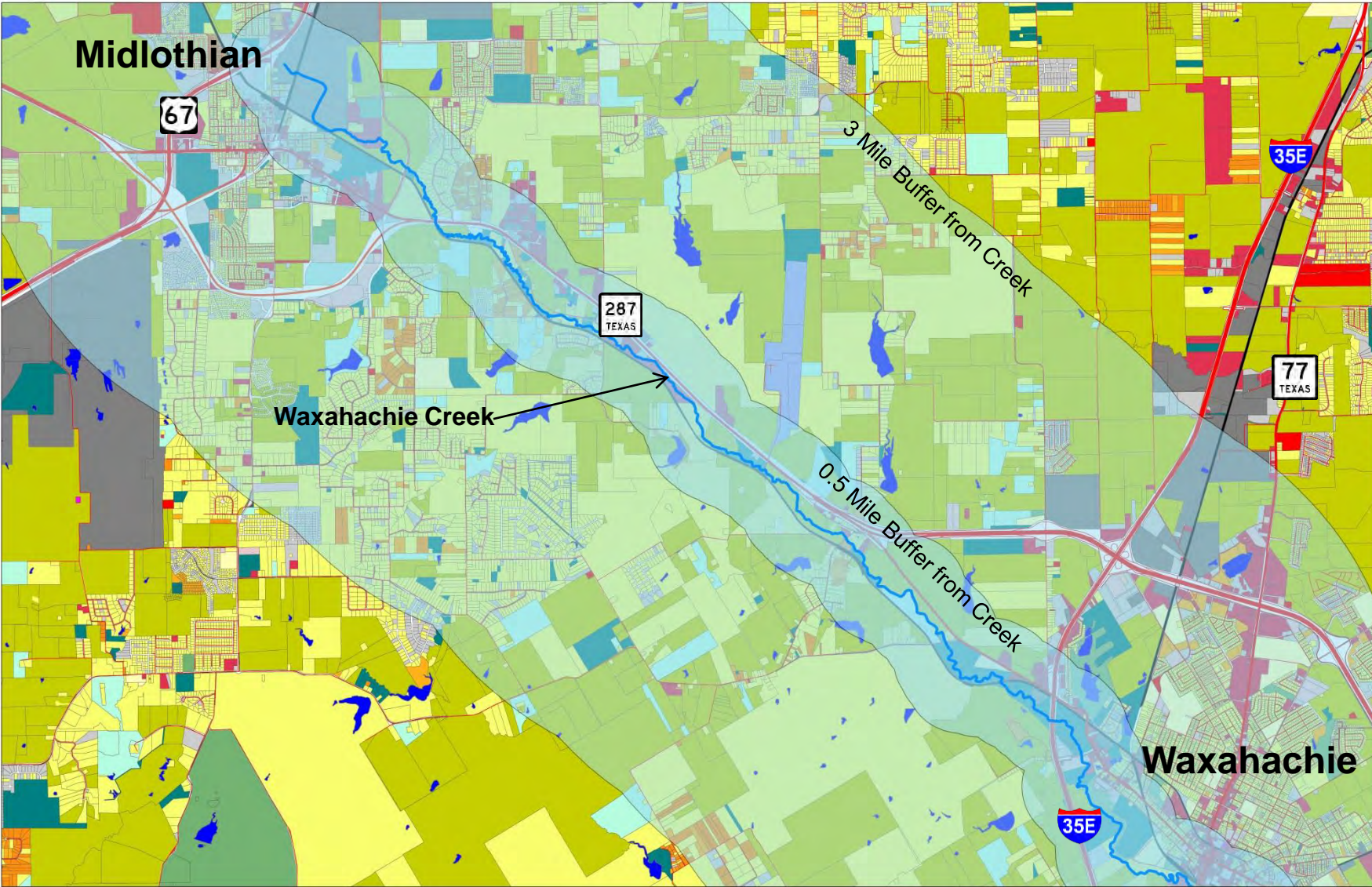


- Legend**
- City/Hall
 - Educational Facilities**
 - Type**
 - Primary Education
 - Private Education
 - Secondary Education
 - Waterbodies
 - Bridges
 - Rail Stations
 - Trails**
 - trail_type**
 - Existing Trail
 - Future Trail
 - On Road Bike Lane
 - Cemeteries
 - Future Community Park
 - Regional Veloweb 2013
 - Future Transit Rail
 - Transit Rail
 - Highways
 - Roads
 - Land Use - Rail Roads
 - Land Use - Utility
 - Parks
 - Land Use - Parks
 - Land Use - Education
 - Airports
 - Parcels
 - Creeks and Streams



0.5 mi = approx. 10 min. walk 3 mi = approx. 15 min. bicycle ride

Proximity to Trail Corridor



- Legend**
- Highways
 - Roads
 - Parcels
 - Land Use CATEGORY**
 - Cemeteries
 - Commercial
 - Communication
 - Education
 - Farmland
 - Group quarters
 - Hotels/motel
 - Improved acreage
 - Industrial
 - Institutional/semi-public
 - Landfill
 - Large stadium
 - Mobile home
 - Multi-family
 - Parking
 - Parks/recreation
 - Railroad
 - Ranch land
 - Residential acreage
 - Retail
 - Roadway
 - Runway
 - Single family
 - Small water bodies
 - Timberland
 - Under construction
 - Utilities
 - Vacant
 - Water



Ranchland/Farmland
 Residential Acreage
 Timberland
 Commercial

0.5 mi = approx. 10 min. walk 3 mi = approx. 15 min. bicycle ride

Data Source: NCTCOG GIS Data, 2010

Recent and Future Development Plans

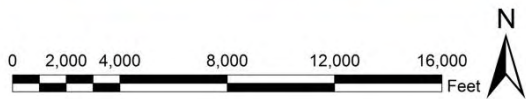
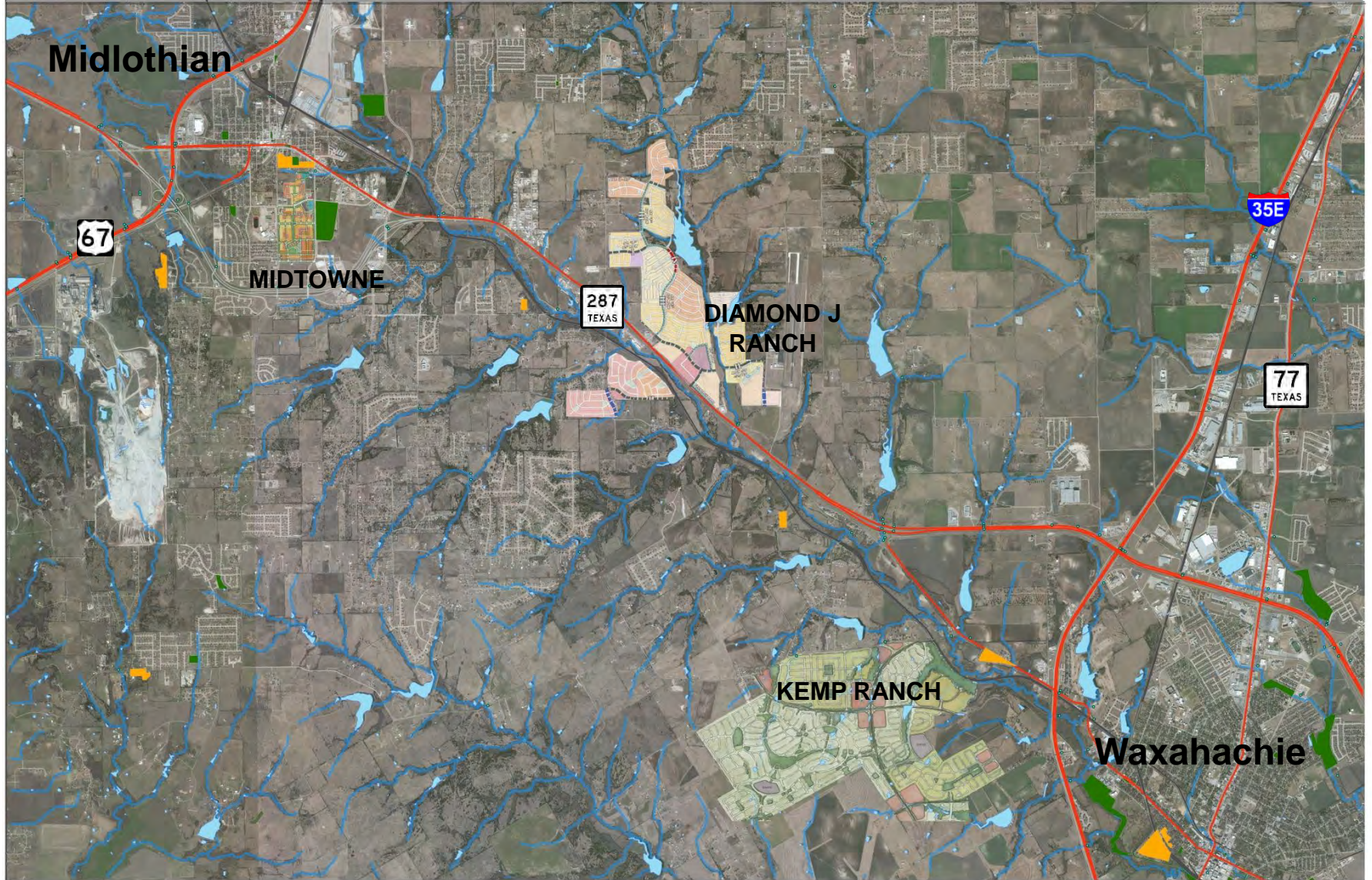


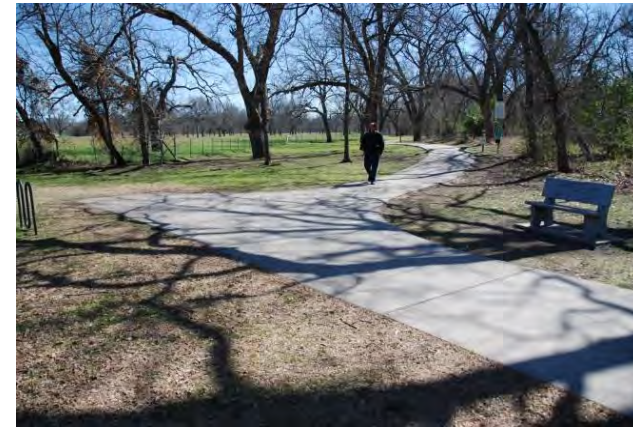
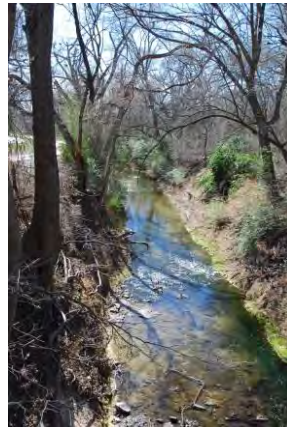
Photo Inventory and Observations



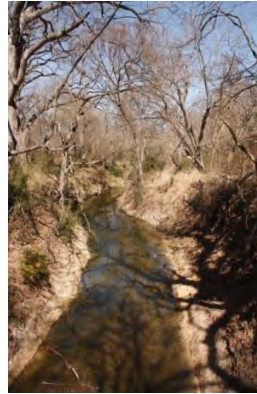
City of Waxahachie



Getzendaner Memorial Park



Trail Map A



Trail Map A



Trail Map A



Trail Map B



Trail Map B: Sardis



Trail Map C: Airport Access



Trail Map C



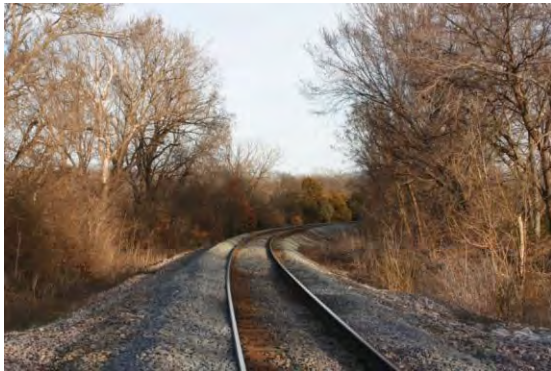
Trail Map C: Community Access



Trail Map D



Trail Map D



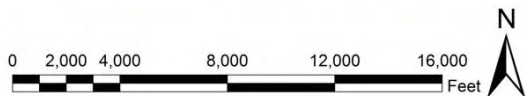
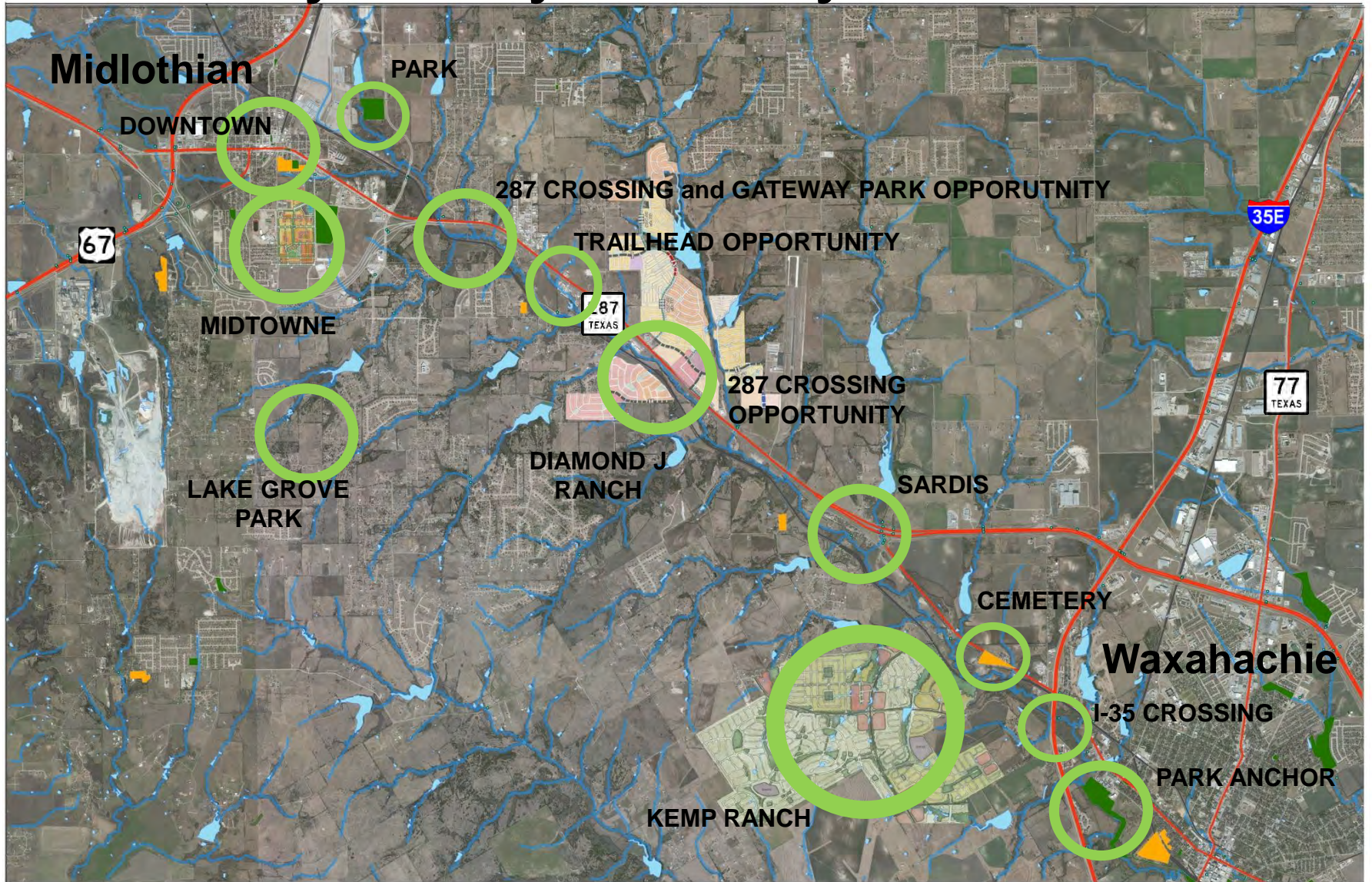
Trail Map D



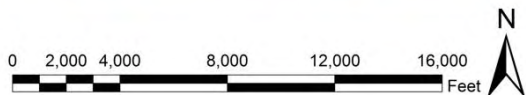
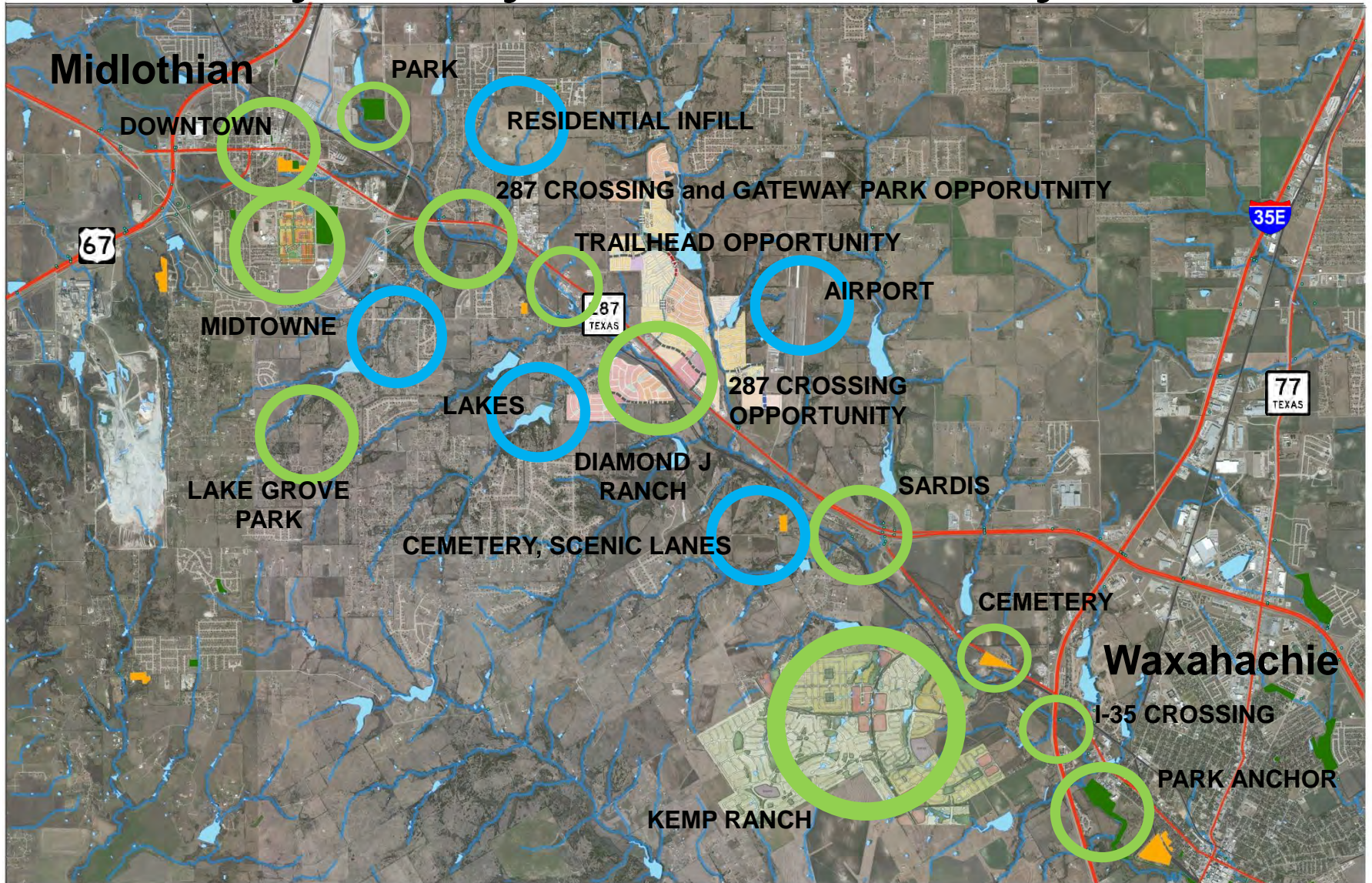
City of Midlothian



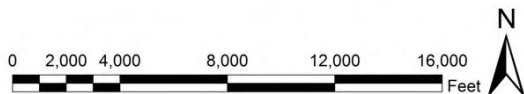
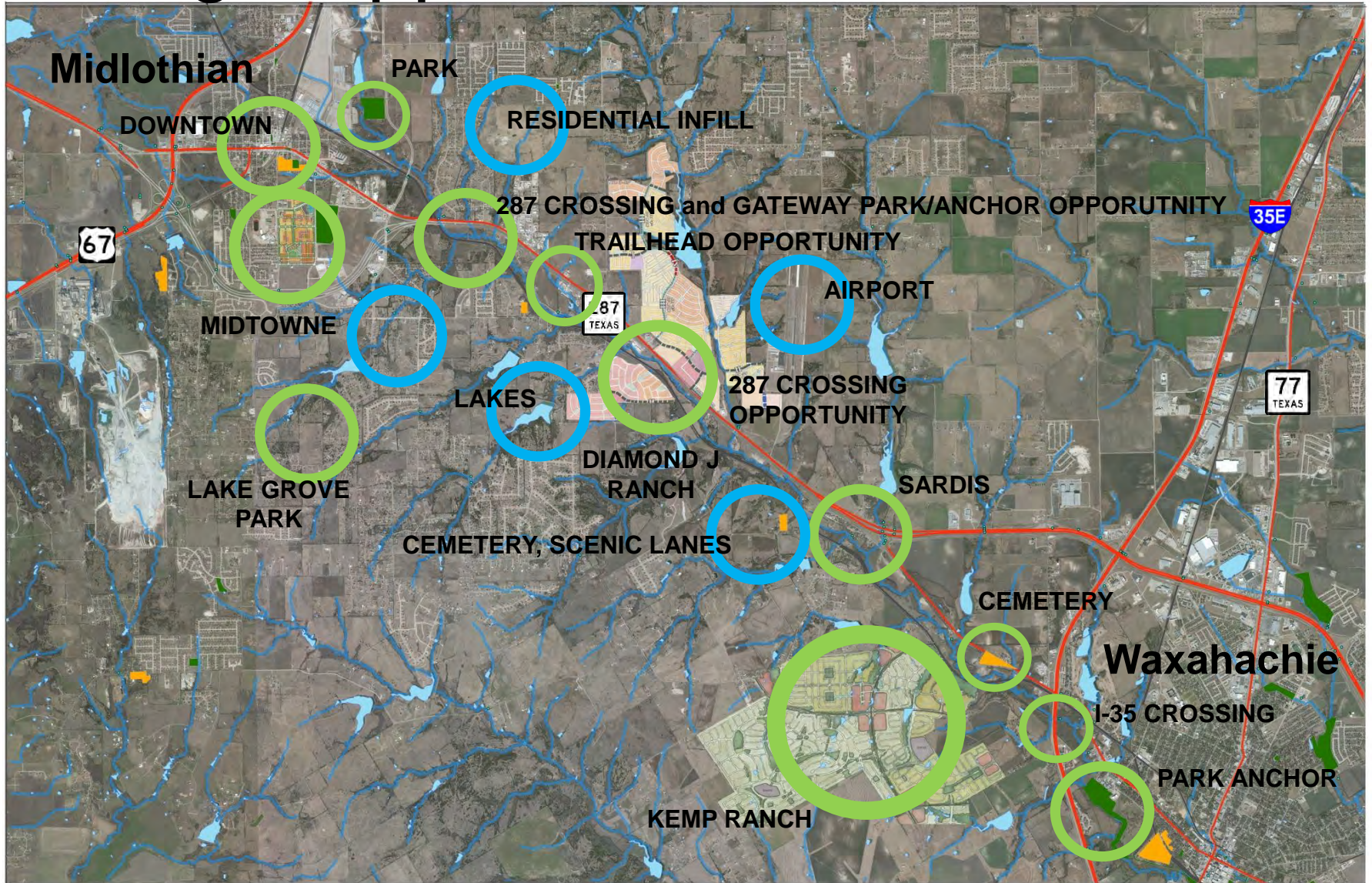
Summary Analysis: Key Sites



Summary Analysis: Community Access

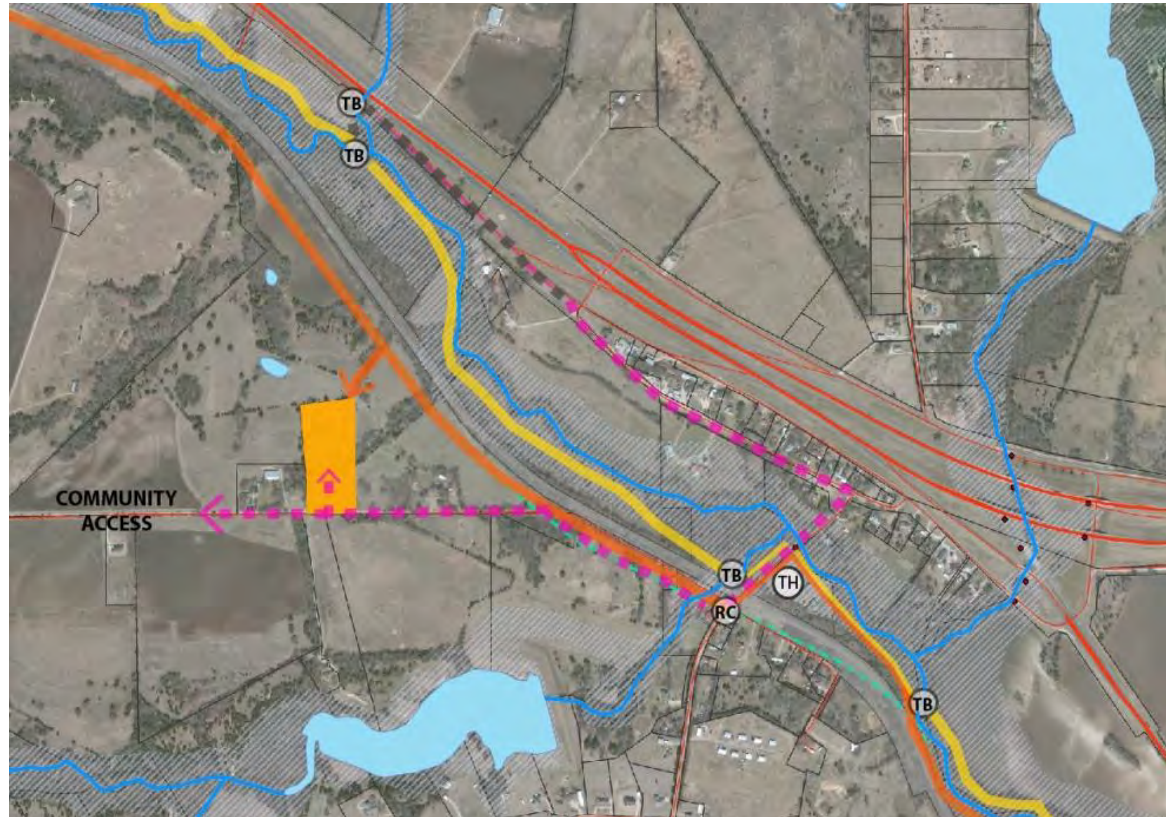


Linkage Opportunities



Exploring Detailed Alignments

- Generally, yellow route maximizes creek views and adjacency
- Orange route more closely follows rail r.o.w. where feasible
- Optional spur linkages to resources and community access
- Connections to the city trail systems



Legend

 Orange Route

 Yellow Route

 Trail Head

 Gateway
park/trailhead


 Pedestrian and Bike
Bridge only

 Pedestrian and Bike
underpass

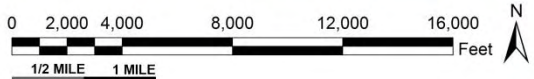
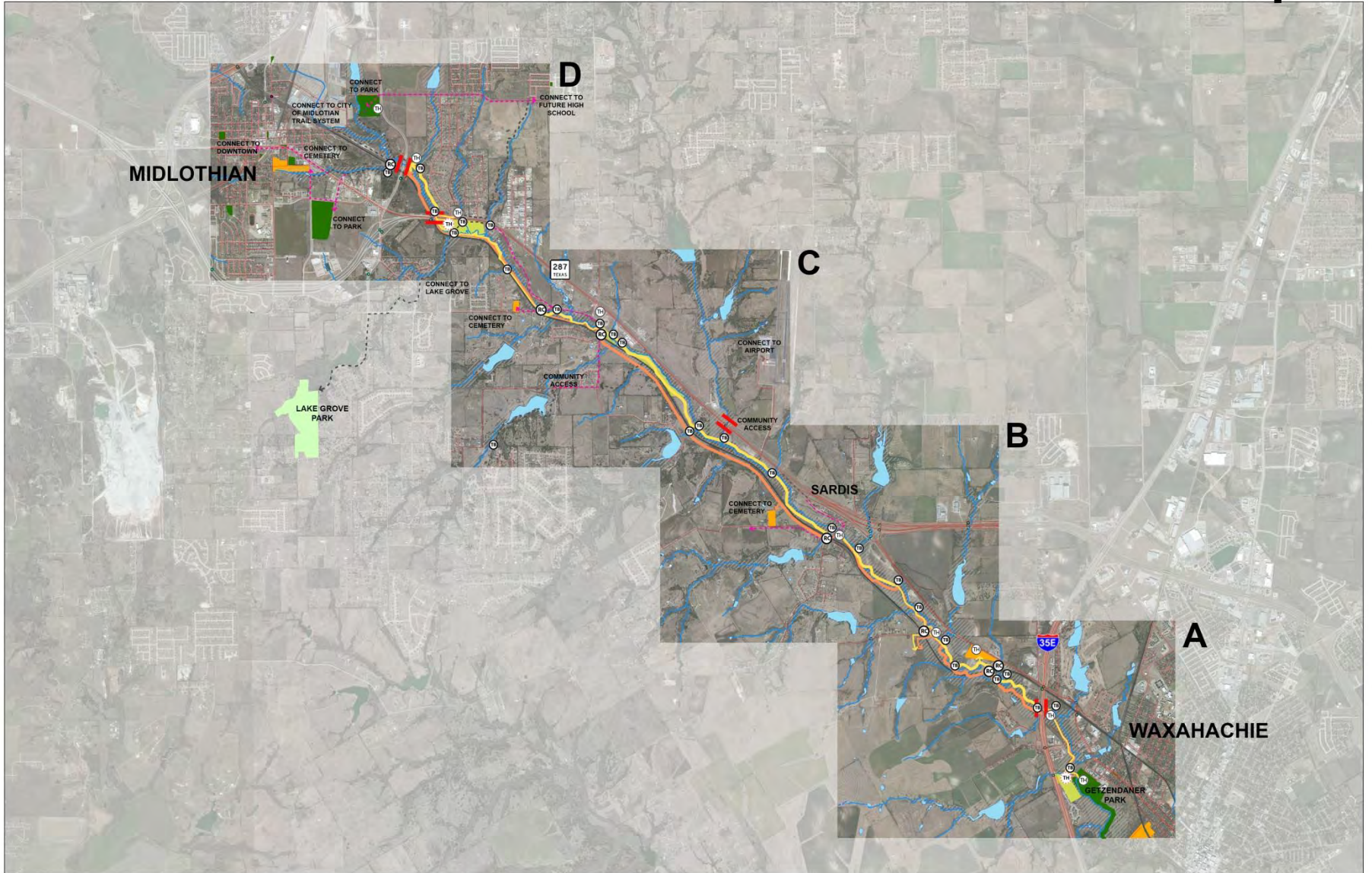
 Railway Crossing

 Community Access
Bikeway

 Community Access
Trail

 Proposed Park
Expansion

Midlothian-Waxahachie Trail Concepts

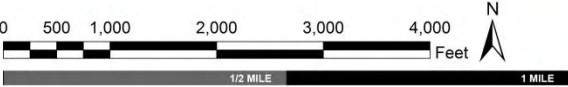


DRAFT

Trail Concept Map A



- Legend**
- Existing Trail
 - Future Trail
 - Existing On Road Bike Lane
 - Bike Lane
 - Orange Route
 - Yellow Route
 - Community Access
 - Blowway
 - Community Access Trail
 - Rail Road Tracks
 - Bridges
 - Trailhead
 - Gateway Park/Trailhead
 - Pedestrian and Bike Bridge Only
 - Railway Crossing
 - Pedestrian and Bike Underpass
 - Stream Flowlines
 - Highways
 - Roads
 - 100 Year Flood Plain
 - Waterbodies
 - Cemetery
 - Future Community Park
 - Land Use - Rail Road
 - Parks
 - Proposed Park Expansion
 - Airport



DRAFT

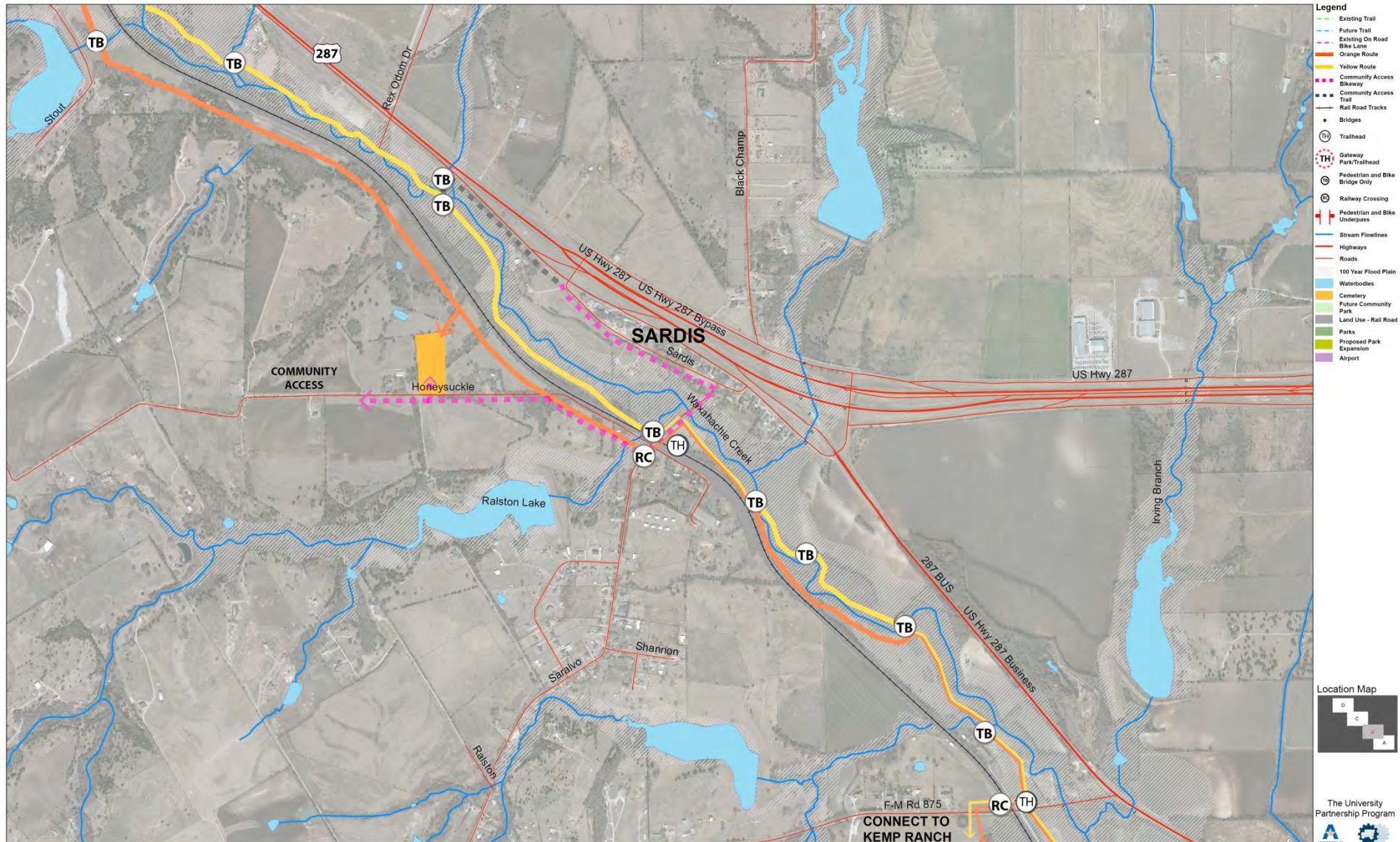
Trail Concept Map A



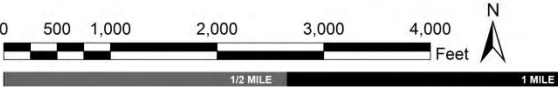
DRAFT

NCTCOG GIS Data, 2010

Trail Concept Map B



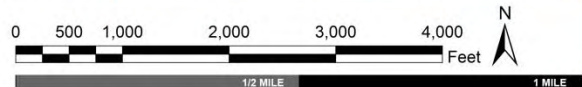
- Legend**
- Existing Trail
 - Future Trail
 - Existing On Road Bike Lane
 - Orange Route
 - Yellow Route
 - Community Access
 - Bloway
 - Community Access Trail
 - Rail Road Tracks
 - Bridges
 - Trailhead
 - Gateway Park/Trailhead
 - Pedestrian and Bike Bridge Only
 - Railway Crossing
 - Pedestrian and Bike Underpass
 - Stream Flowlines
 - Highways
 - Roads
 - 100 Year Flood Plain
 - Waterbodies
 - Cemetery
 - Future Community Park
 - Land Use - Rail Road
 - Parks
 - Proposed Park Expansion
 - Airport



DRAFT

CONNECT TO KEMP RANCH

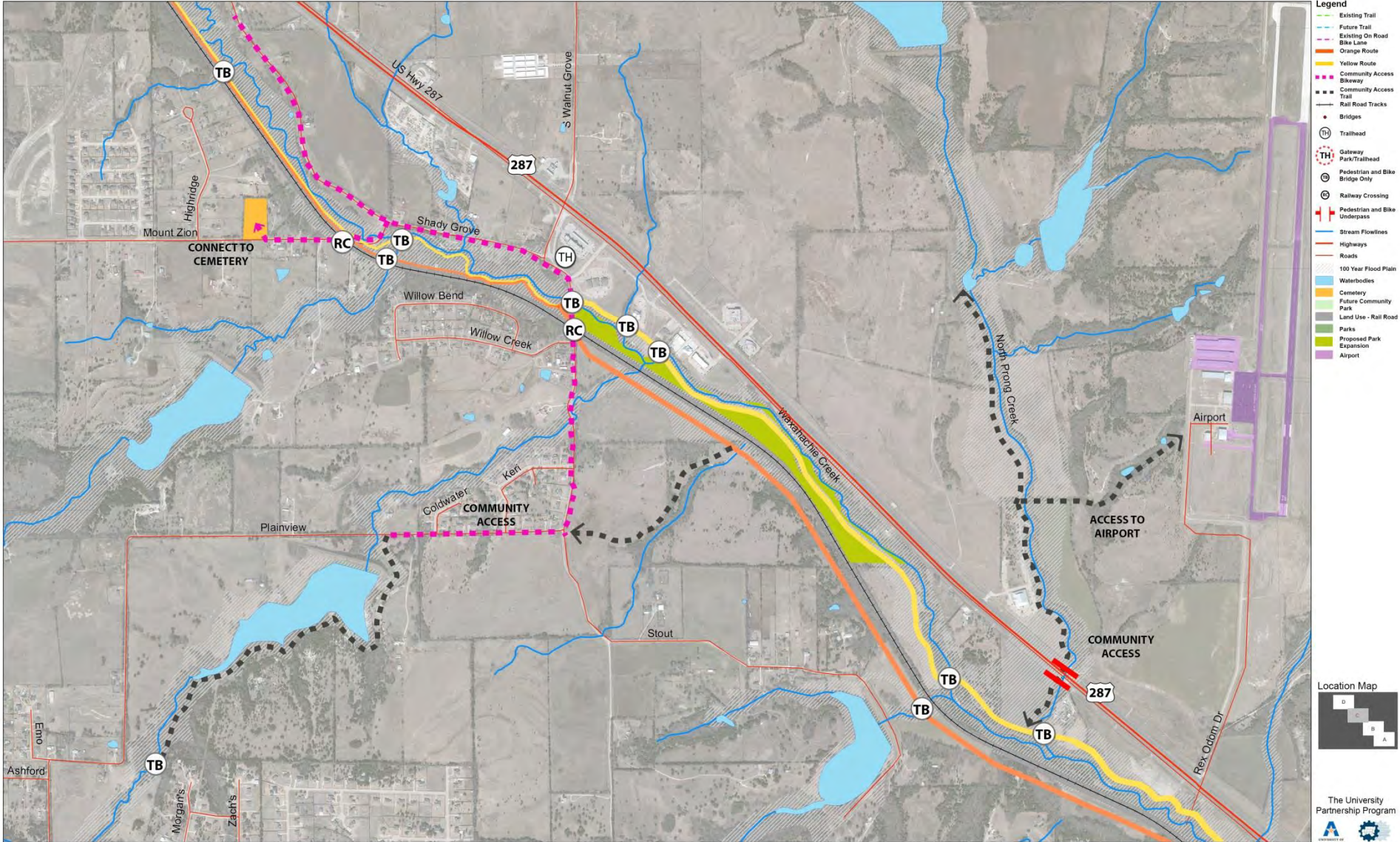
Trail Concept Map B



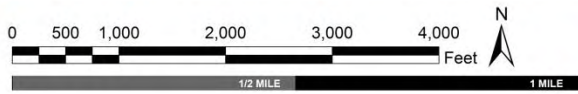
DRAFT

NCTCOG GIS Data, 2010

Trail Concept Map C



- Legend**
- Existing Trail
 - Future Trail
 - Existing On Road Bike Lane
 - Orange Route
 - Yellow Route
 - Community Access Blway
 - Community Access Trail
 - Rail Road Tracks
 - Bridges
 - Trailhead
 - Gateway Park/Trailhead
 - Pedestrian and Bike Bridge Only
 - Railway Crossing
 - Pedestrian and Bike Underpass
 - Stream Flowlines
 - Highways
 - Roads
 - 100 Year Flood Plain
 - Waterbodies
 - Cemetery
 - Future Community Park
 - Land Use - Rail Road
 - Parks
 - Proposed Park Expansion
 - Airport

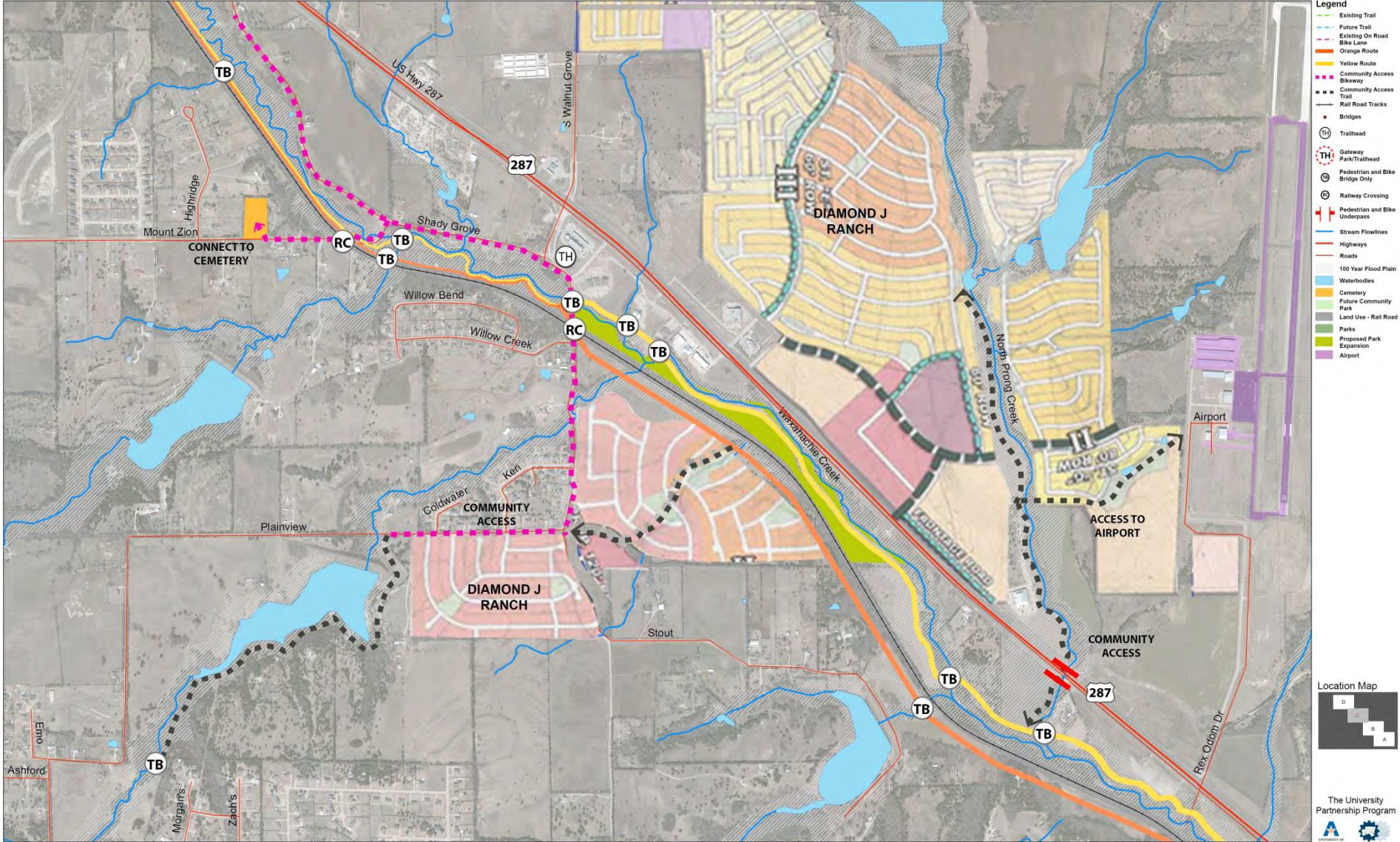


DRAFT

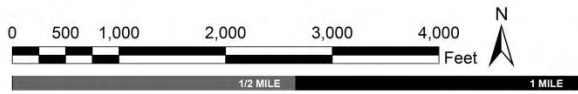
NCTCOG GIS Data, 2010

The University Partnership Program

Trail Concept Map C



- Legend**
- Existing Trail
 - Future Trail
 - Existing On Road
 - Bike Lane
 - Orange Route
 - Yellow Route
 - Community Access
 - Blowway
 - Community Access Trail
 - Rail Road Tracks
 - Bridges
 - Trailhead
 - Gateway Park/Trailhead
 - Pedestrian and Bike Bridge Only
 - Railway Crossing
 - Pedestrian and Bike Underpass
 - Stream Flowlines
 - Highways
 - Roads
 - 100 Year Flood Plain
 - Waterbodies
 - Cemetery
 - Future Community Park
 - Land Use - Rail Road
 - Parks
 - Proposed Park Expansion
 - Airport

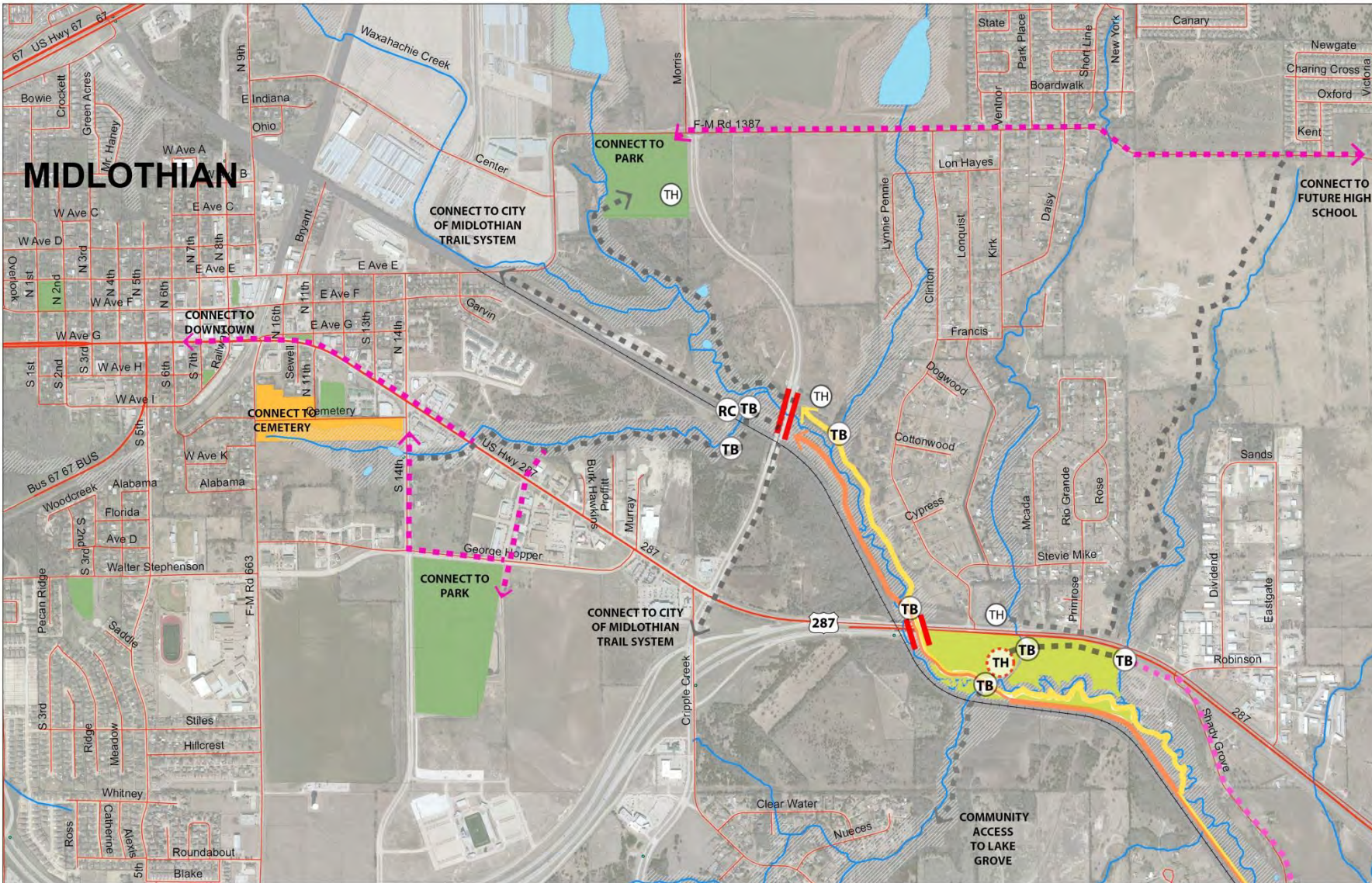


DRAFT

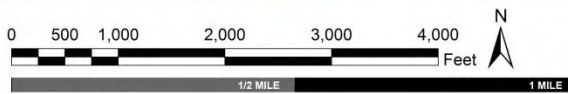
NCTCOG GIS Data, 2010

The University Partnership Program

Trail Concept Map D



- Legend**
- Existing Trail
 - Future Trail
 - Existing On Road Bike Lane
 - Orange Route
 - Yellow Route
 - Community Access Bikeway
 - Community Access Trail
 - Rail Road Tracks
 - Bridges
 - Trailhead
 - Gateway Park Trailhead
 - Pedestrian and Bike Bridge Only
 - Railway Crossing
 - Stream Flowlines
 - Highways
 - Roads
 - 100 Year Flood Plain
 - Waterbodies
 - Cemetery
 - Future Community Park
 - Land Use - Rail Road
 - Parks
 - Proposed Park Expansion
 - Airport

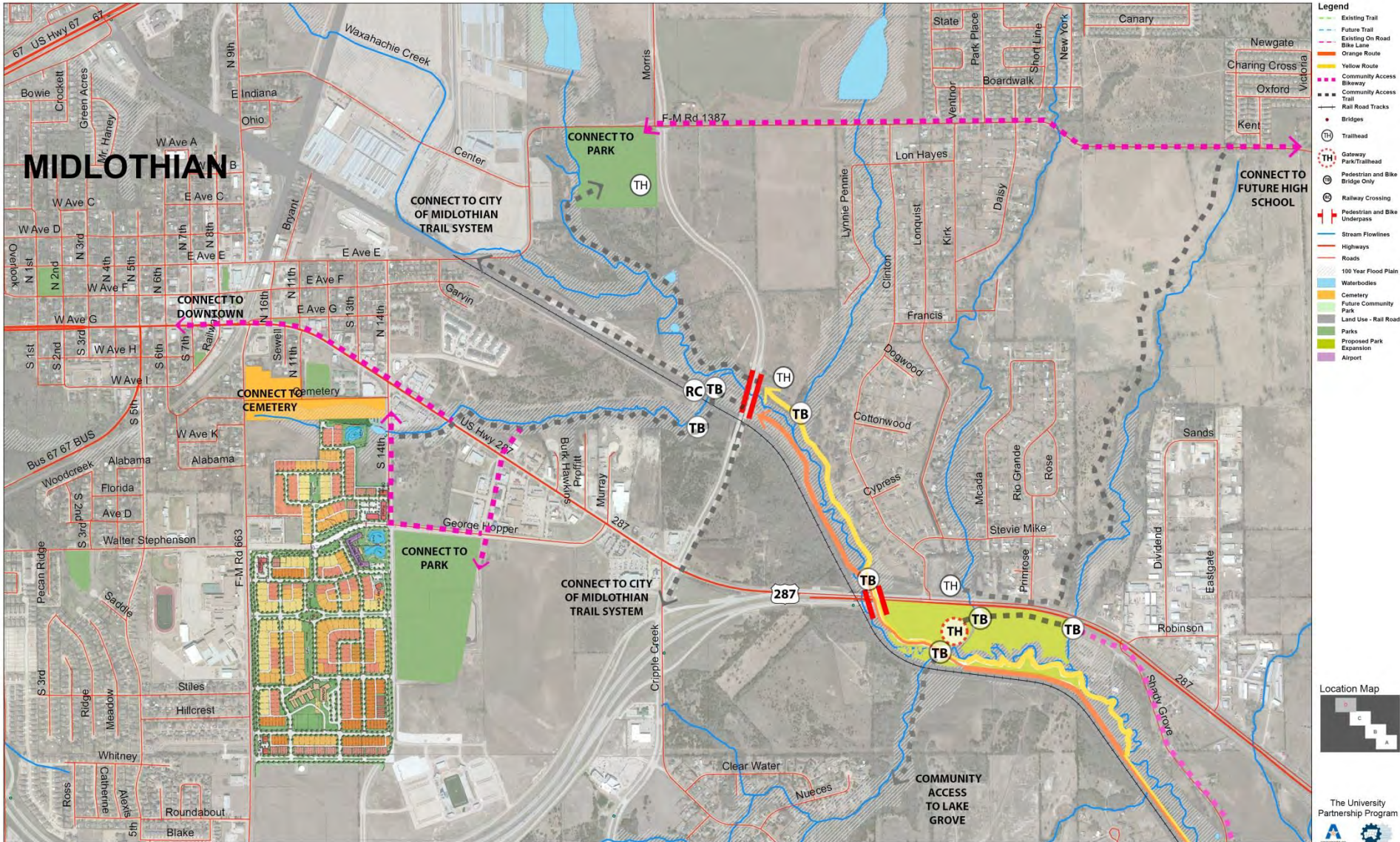


DRAFT

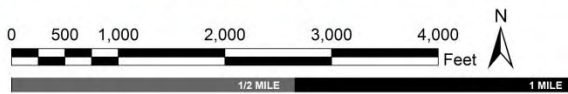
NCTCOG GIS Data, 2010



Trail Concept Map D

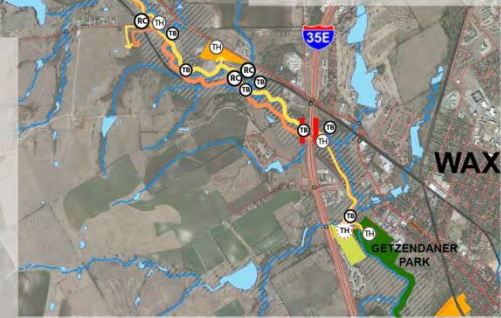
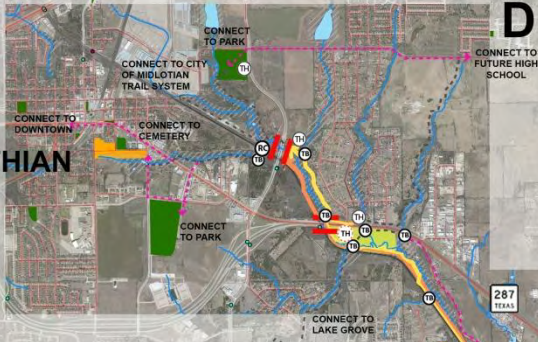


- Legend**
- Existing Trail
 - Future Trail
 - Existing On Road Bike Lane
 - Orange Route
 - Yellow Route
 - Community Access Bikeway
 - Community Access Trail
 - Rail Road Tracks
 - Bridges
 - Trailhead
 - Gateway Park/Trailhead
 - Pedestrian and Bike Bridge Only
 - Railway Crossing
 - Pedestrian and Bike Underpass
 - Stream Flowlines
 - Highways
 - Roads
 - 100 Year Flood Plain
 - Waterbodies
 - Cemetery
 - Future Community Park
 - Land Use - Rail Road
 - Parks
 - Proposed Park Expansion
 - Airport



DRAFT

MIDLOTHIAN



Length: **11.1 miles** **11.3 miles**

Gateway acquisitions:	2	2
Trail heads:	7	7
Bridges:	15	17
RR Crossings:	6	2
Underpasses:	1	1
Properties Crossed:	50	65
Miles of RR r.o.w.:	6.6	.6

**ORANGE
ROUTE**

**YELLOW
ROUTE**

Key Issues: What we need to know

- Alternative main trail routings:
 - Yellow route?
 - Orange route?
 - Hybrid/mixed?
- “Community Access” routes:
 - Extent and destination
- Future parkland and easement opportunities
 - Gateway parks
 - Function of trail (high speed vs. recreation)
 - Scenic value/character of trail experience
- What do we take forward?

Next Steps

- Today's feedback
- Revisions based on feedback
- Opinion of concept level budget
- Implementation strategies
- Draft report

Acknowledgements

North Central Texas Council of Governments

The University of Texas

Ellis County

City of Midlothian

City of Waxahachie

The University of Texas at Arlington

Program in Landscape Architecture, School of Architecture and

The Institute of Urban Studies, The School of Urban and Public Affairs



Key System Elements: Quantifications

Length:	11.1 miles	11.3 miles
Gateway acquisitions:	2	2
Trail heads:	7	7
Bridges:	15	17
RR Crossings:	6	2
Underpasses:	1	1
Properties Crossed:	50	65
Miles of RR r.o.w.:	6.6	.6
	ORANGE ROUTE	YELLOW ROUTE