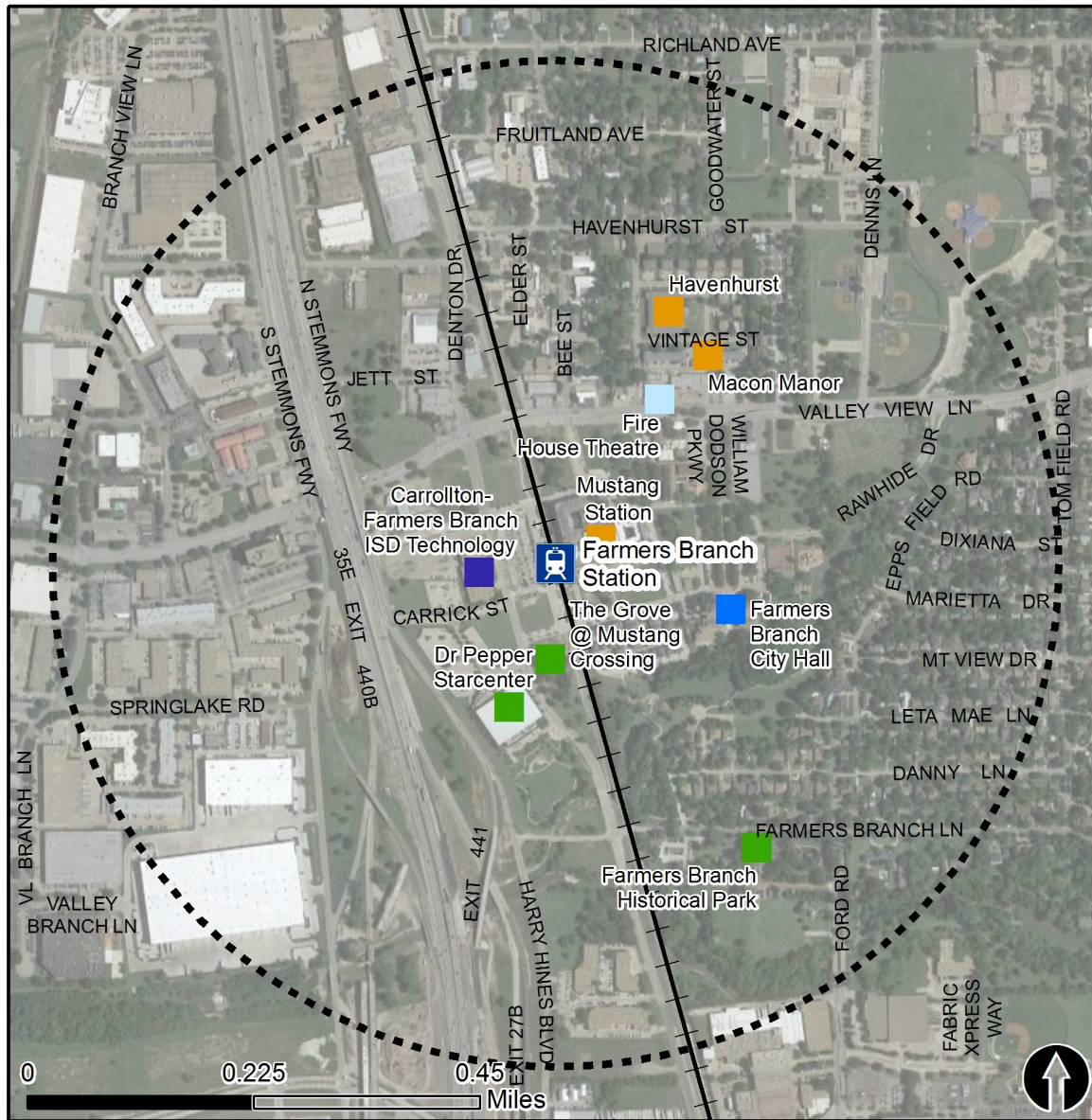


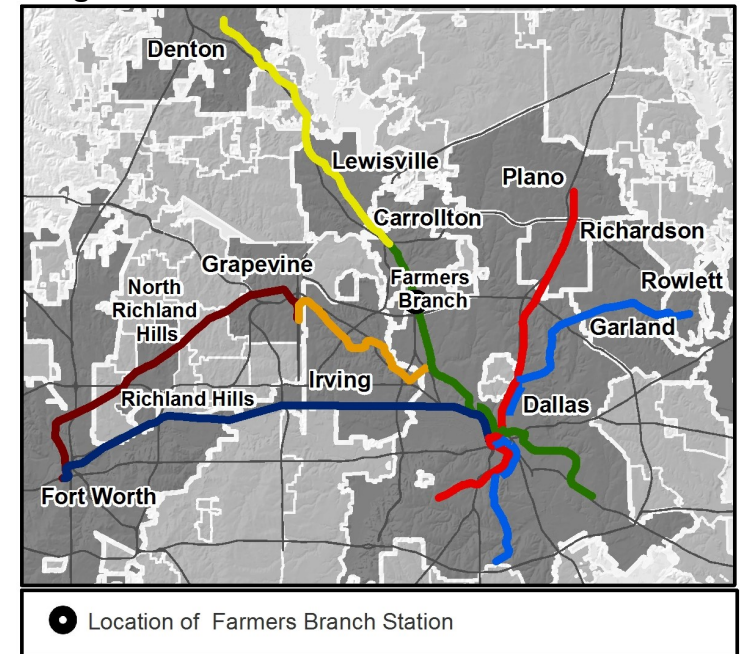
Rail Station Fact Sheet – Farmers Branch Station



Station Overview

Farmers Branch Station is located at the intersection of Denton Drive and Pike Street in the City of Farmers Branch. The station opened in 2010 and is served by the DART Rail Green Line.

Regional Rail Transit Lines



0.5 Mile
Station Buffer

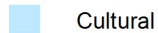


Rail Stations

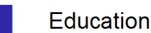


Rail Lines

Key Developments



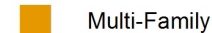
Cultural



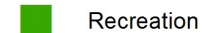
Education



Government



Multi-Family



Recreation

Rail Station Fact Sheet – Farmers Branch Station



North Central Texas
Council of Governments

Station Characteristics¹

Address	12800 Denton Drive
City	Farmers Branch
Agency	Dallas Area Rapid Transit
Rail Line(s)	Green Line
Corridor	Northwest (NW)
Year Opened	2010
Park & Ride Spaces	164

Ridership¹

2015 Avg. Weekday	785
2015 Avg. Saturday	373
2015 Avg. Sunday	203

2014 On-Board Transit Survey: Access Mode to Station²

Bike	0.4%
Drive Alone	8.1%
Carpool	4.1%
Walk	26.9%
Drop Off	14.0%
Other	0.8%
Transit Transfer	45.7%

Station Area Plans and Studies

Title	Station Area Conceptual Master Plan
Publisher	City of Farmers Branch
Year	2002
Web Location	http://www.farmersbranch.info/index.aspx?NID=360

Station Area Characteristics (1/2 mile radius)

Demographics³

Total Population	4,031
Population Density (pop/sq. mile)	909
Average Median Age	37
Average Median Income	\$47,614.20

Housing³

Total Housing Units	1,312
Housing Density (units/sq. mile)	296
Percent Occupied	97%
Percent Owner-Occupied	70%
Percent Renter-Occupied	30%

Commute To Work³

Percent Automobile	91.6%
Percent Drive Alone	77.2%
Percent Carpool	14.4%
Percent Transit	1.2%
Percent Bike	0.0%
Percent Walk	2.8%
Percent Other	0.6%
Percent Work from Home	3.7%
Percent Zero-Vehicle Households	1.7%

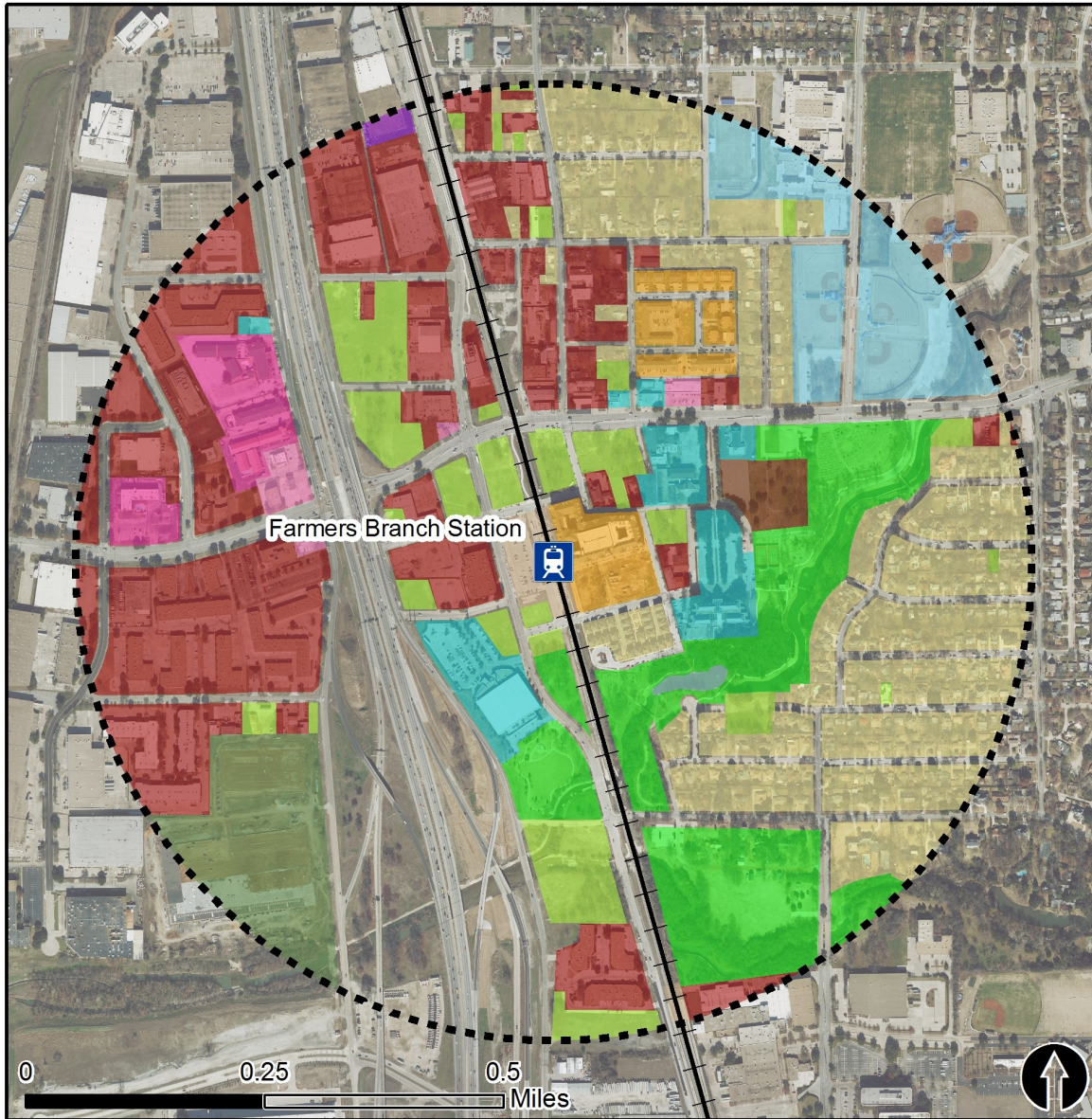
Traffic Survey Zone 2017 Employment Forecast²

Total Jobs	17,476
Job Density (jobs/sq. mile)	7,667

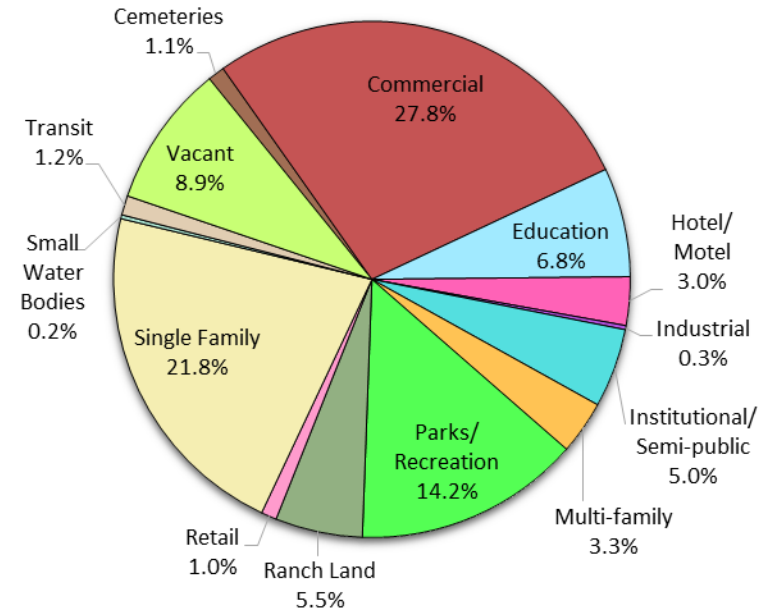
Land Use (2016) – Farmers Branch Station



North Central Texas
Council of Governments



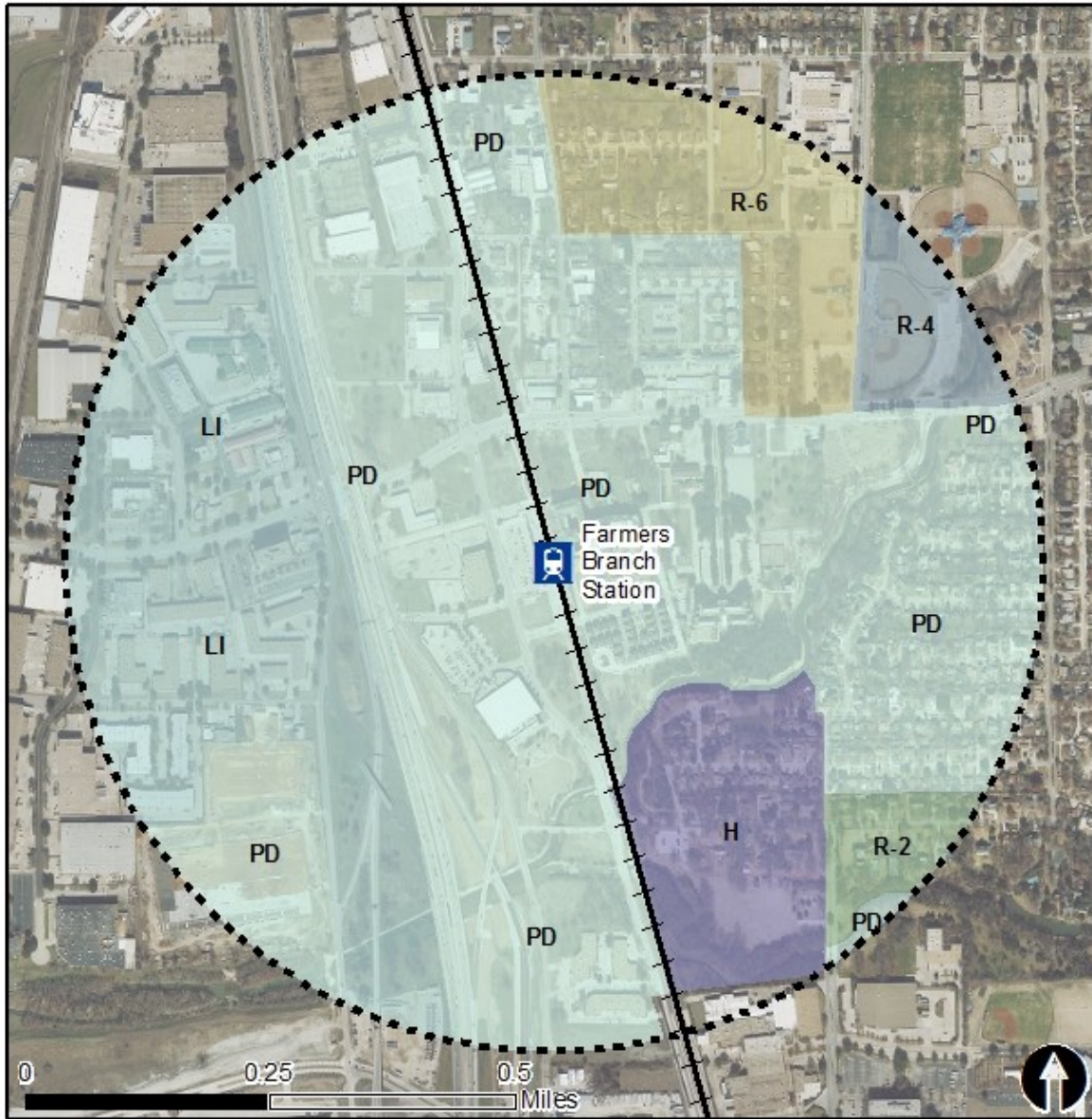
Land Use Percentages



0.5 Mile
Station Buffer

Rail Stations Rail Lines

Zoning (2016) – Farmers Branch Station



Zoning Districts

PD # – Planned Development District

PD-86 – Farmers Branch Station Area Form-Based Code

LI/PD – Light Industrial/Planned Development District

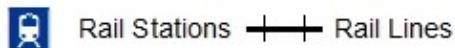
R-2 – One-Family Residence District-2

R-4 – One-Family Residence District-4

R-6 – One-Family Residence District-6

For more information on zoning, please visit the City of Farmers Branch Planning and Zoning website at:

<http://farmersbranchtx.gov/index.aspx?NID=109>

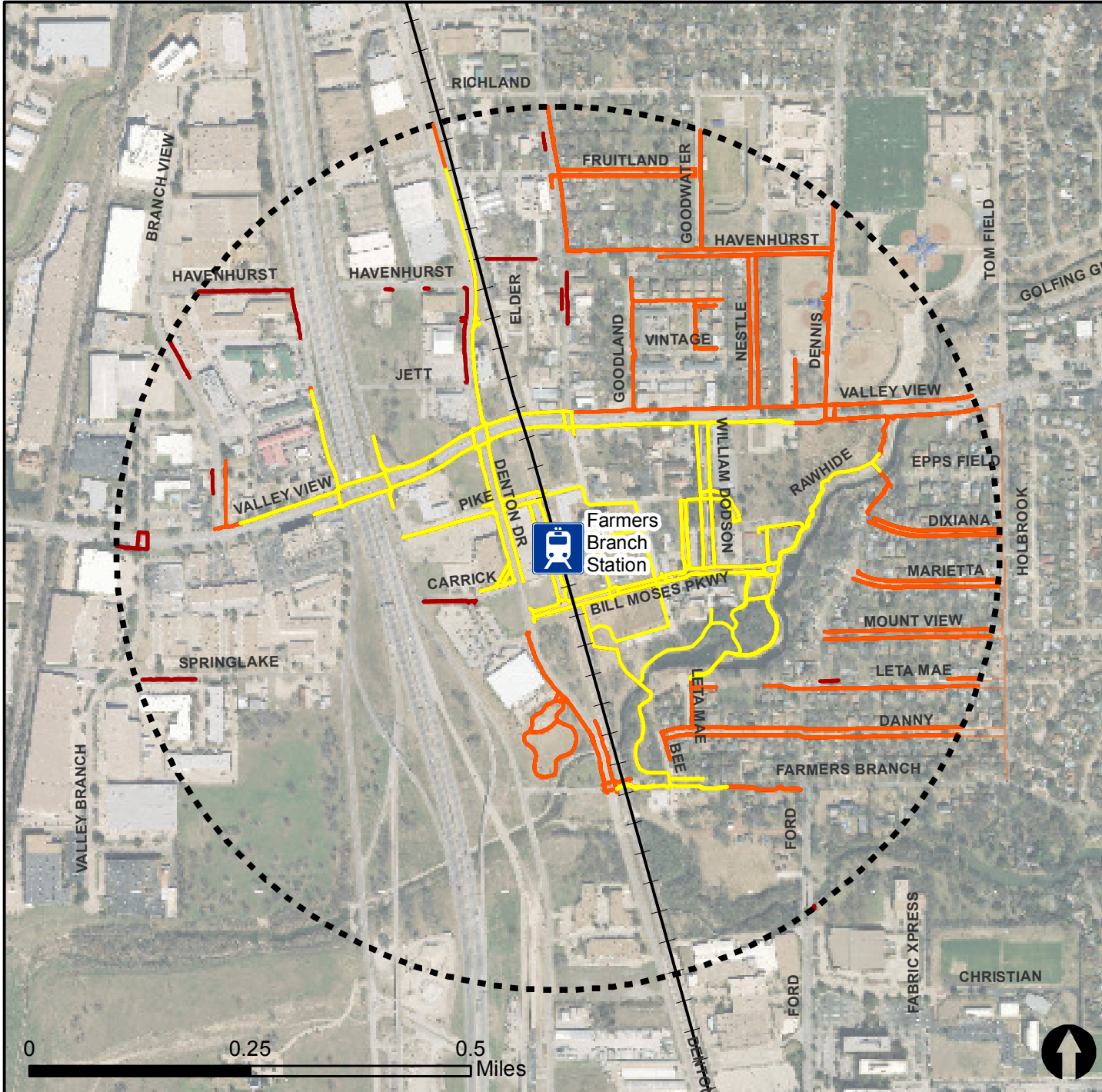


Pedestrian Routes to Rail - Farmers Branch Station







Last Updated: February 2015



North Central Texas
Council of Governments

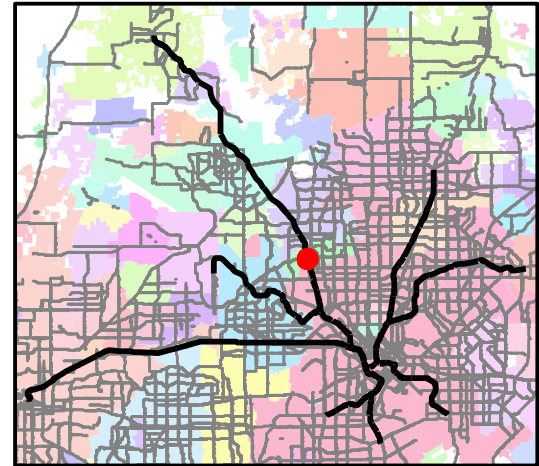


Legend

-  Rail Stations
-  0.5 Mile Station Buffer
-  Railroads
-  Existing sidewalk facilities within a 0.5 mile walk distance
-  Existing sidewalk facilities greater than a 0.5 mile walk distance
-  Existing sidewalk facilities that are disconnected due to a gap in the network

Project Overview

The Pedestrian Routes to Rail study identifies all existing pedestrian facilities within a half-mile radius of existing light rail and commuter rail stations in the Dallas-Fort Worth region based on 2014 data. ArcGIS Network Analyst tool was used to identify continuous facilities that are less than or greater than a half-mile actual walking distance to a station. The maps also reflect existing facilities that are disconnected due to gaps or other barriers not allowing a continuous pedestrian route to a station. The maps do not reflect the condition or ADA compliance of the existing infrastructure. More information on the Routes to Rail study and methodology is available at: nctcog.org/RoutesToRail

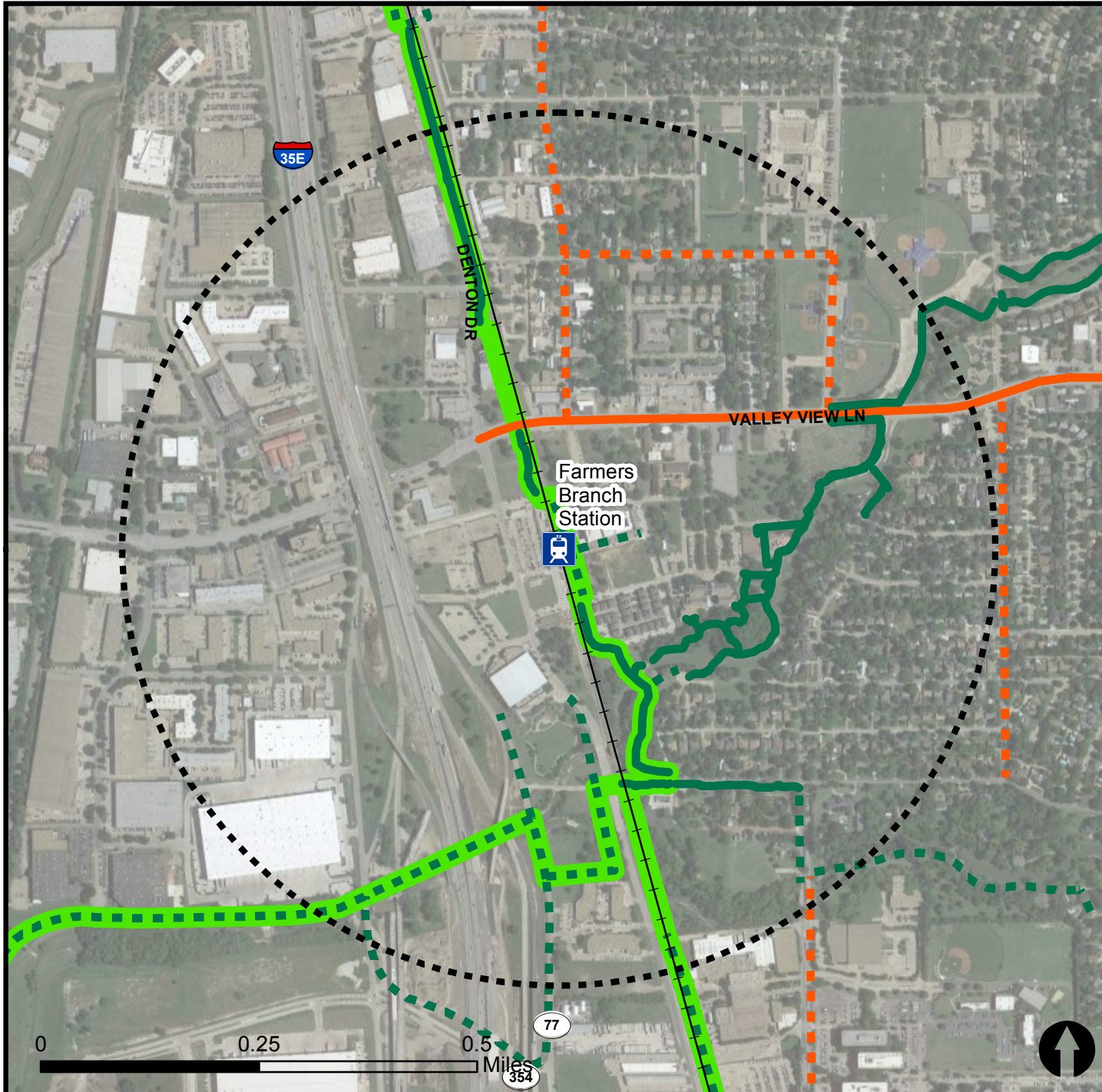


Bicycle Routes to Rail - Farmers Branch Station

Last Updated: October 2016



North Central Texas
Council of Governments



Legend

- Rail Stations
- 0.5 Mile Station Buffer
- Rail Lines
- On-Street Bikeway, Existing
- On-Street Bikeway, Planned
- 2040 Veloweb
- Off-Street Path, Existing
- Off-Street Path, Planned

Project Overview

The Bicycle Routes to Rail study identifies all existing and planned bikeways in proximity to existing or under-construction light rail and commuter rail stations in the Dallas / Fort Worth region based on 2016 data. The maps reflect off-street paths (trails) and streets designated by local adopted master plans for dedicated bikeways (e.g. bike lanes, cycle tracks) located on the street. In accordance with the Texas Transportation Code, bicyclists have a right to the road. As such, the map does not reflect other roadways around the station that may have signed bike routes or by state law may be used by bicyclists. More information about the Routes to Rail study and methodology is available at:

nctcog.org/RoutesToRail

